

# GET YOUR CATALOGUES THIS WEEK

Success in The Bee Booklovers' contest, which comes to a close at 6 p. m. Saturday, November 11, can be achieved only through the use of the title catalogues, containing 5,000 book titles. From this list the names of the books used in the contest were selected. The catalogue sells for 25 cents, and will be sent by mail for 5 cents additional.

## All Buying Extra Coupons Now

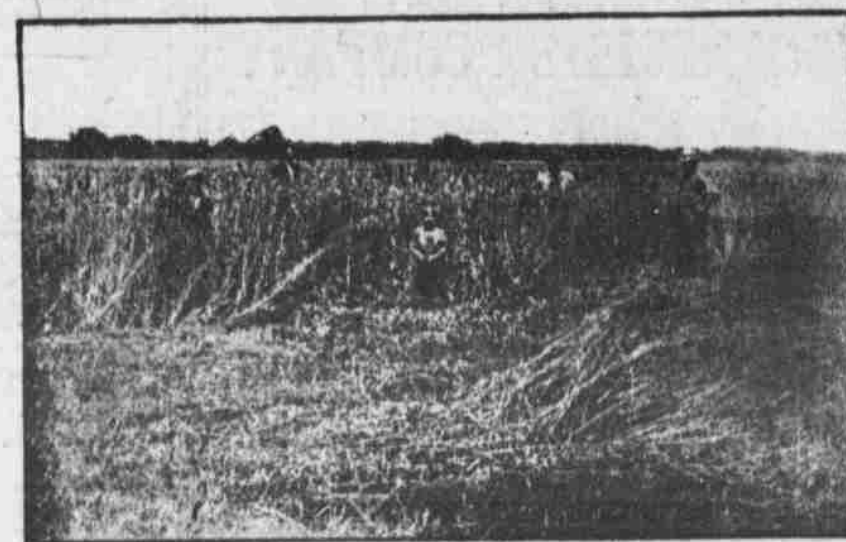
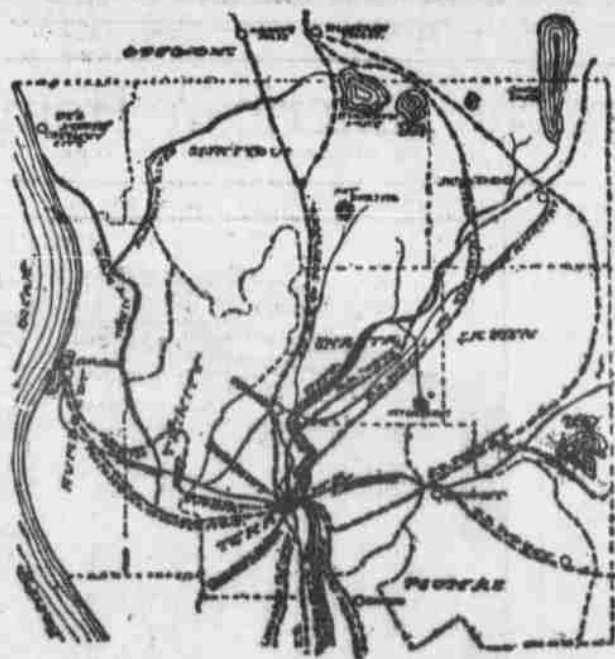
The sale of coupons for the answers was very large last week and will run high this week. The contestants realize that they must use extra coupons and take the allotted number of answers if they expect to win prizes. In the first contest the winner of the leading prize used many extra coupons. He advises all other contestants to have a great number. These coupons sell for one cent each. A whole set is priced at 75 cents.

**Get Your Orders in Tomorrow**

## SECOND PRIZE A Ten-Acre Ranch In Tehama County, California



SCENE ON TEHAMA COUNTY LAND



SCENE ON TEHAMA COUNTY LAND

In a climate shown by the government chart to be the same as that of Los Angeles, Fresno, etc., lies Tehama county, California. It is within two hundred and fifty miles of San Francisco, and there is situated the famous Lutheran colony which has had so much discussion in Omaha by reason of a local clergyman taking the initiative in its formation. The Bee offers this ten-acre ranch as second prize in its Booklovers' contest. Here is a livelihood for man, wife and children for the rest of time. Here is \$1,250 in land, carrying free water, waiting only for the plow share and intelligence to cultivate and produce almost any variety of fruit.

FULL INFORMATION CONCERNING THIS LAND MAY BE HAD AT THE OFFICE OF

## Trowbridge-Bolster Company

City National Bank Building