



HINTS for the WELL DRESSED WOMAN



Smart Tailored Suits

BY MARY ELEANOR O'DONNELL



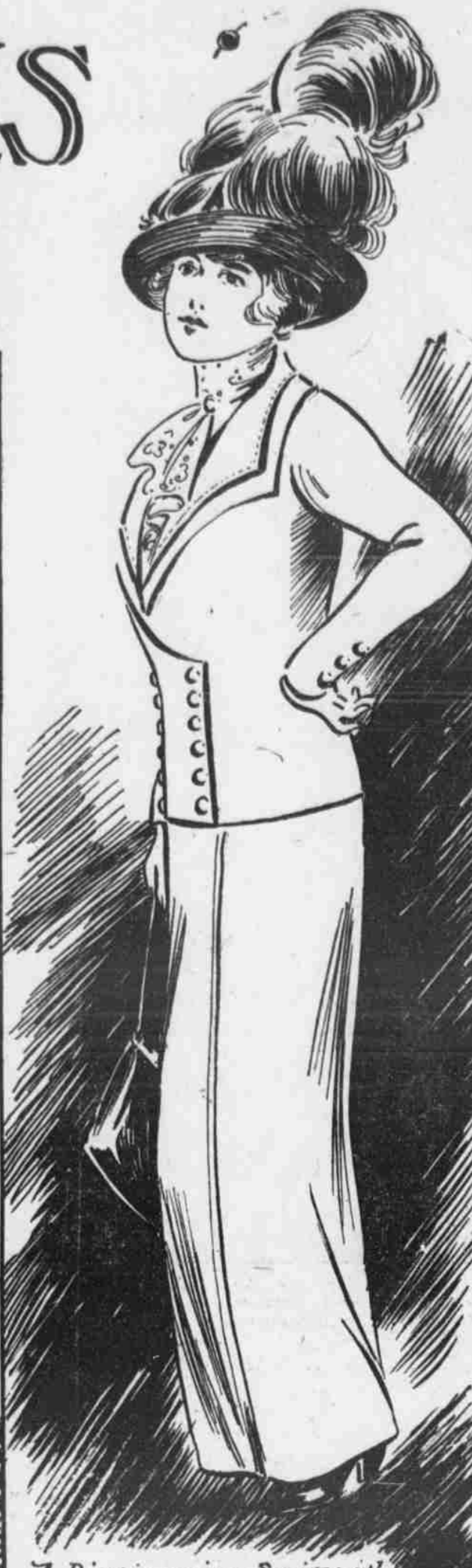
A Practical Design in Heavy Blue Serge, with Sailor Collar and Cuffs in Ribbed Silk.



A Charming Model in Broadcloth and Velvet The Skirt Shows the New Foot Ruche



Three Piece Suits Are Still Popular. This Model Shows Newest Development in Blouses. The Skirt Is Fringe Trimmed.



A Distinctive Suit with Double Breasted Front Fastening Low with Two Rows of Buttons.

THE fashions of today are on a whole the most reasonable and the most harmonious and graceful of any fashions ever created for women.

Nowadays women look real. They seem to have real anatomy. When one remembers the bustles, polonaises, balloon sleeves, high busts, wasp waists, and other such atrocities one begins to realize that the modern gown, which tends towards simplicity of line and follows the outlines of the human body, is on the right road to common sense and good taste.

Another important point is that the fashions of this season are adaptable to all types of figures. It is a pity, however, that so many stout women do not realize this and continue to compress themselves into tight fitting clothes, thinking, no doubt, they look smaller, while the effect is quite the contrary.

The styles of the last few seasons are designed principally for the slender and the tall; in fact, for three years the styles have been made for the slim, stinky figure, and the fat have no consideration shown them. What's to be done?

Be out of style, or else create a style all your own if you are a sensible victim of a cold-up-to-date.

The stout woman can dress to look her best if she will. It takes thought, courage, and a rigid simplifying of tastes.

If you wish to be a woman who doesn't look her size here are a few things to do:

Recognize your affliction from the start.

Don't indulge in the fond delusion that you are a beauty and have not been putting on pounds at a beautiful rate.

Then take your stand in front of a mirror and look at yourself long and hard. Be sure you do it understandingly. Look at yourself just as if you were another woman.

See yourself as others see you; gulp down the sad fact that you have spread some and then begin adjustment to the new conditions.

Having acknowledged that you are fat, say in the next breath, "Well, any way, I am not going to look it, so there."

Make up your mind that bright colors, tight fitting lines, lying in bed in the morning, sitting when you

should be standing, the sitting of candy and sweets must be things to do away with entirely.

You must reconcile yourself to straight lines, subdued colors, smooth materials, and simplicity, awaiting that great day when some kind modiste will remember that there are a few fat women as well as long, lank, lean ones.

Good corsets are an absolute necessity, regardless of the no-corset movement that is sweeping through the country. These skillful cuts will do much to make the "fat woman" look as if she weren't, but rigorous self-denial is what is really needed. As most women would rather buy slinness than earn it, this isn't always pleasant to hear.

None the less, exercise and diet are the only stand-bys for the woman with the hankering after willowy lines.

Turn the other way when you come to a mirror, learn not to mind when your friends make size remarks about your increased weight, and life will be fairly comfortable.

In regard to the all important costume, the tailored suit, a great deal of attention is given to the strictly tailored models. They are made this season with little trimming and usually show the notched collar and small revers similar to those on a man's coat. They fasten down the front with four or five buttons and some show a slight outway effect instead of the square cut coat of the last season. These coats nearly all measure from twenty-eight to thirty inches. The skirts are usually plain, narrow, and but few show the panel back.

While there are coats cut on at the waist line and

having a fitted skirt or peplum attached, as well as coats that show some odd cuttings of the seams, there promises to be a big demand for the straight line semi-fitting coat; this is particularly true in medium priced goods.

The dressier suits show considerable trimming on large collars, revers, and cuffs, and frequently on skirts. Velvet and satin are used largely for this purpose. Novelty velvets, particularly in striped effects, are also shown. Plain and fancy braids as well as braided ornaments are much in demand, particularly in black, though many are dyed to match material.

The new woolen embroideries in East Indian effect and colorings are seen on many of the high grade goods.

A noticeable feature of the dressier types of costumes is the odd cutting of the seams. By clever manipulation of the shears the designers are able to get up a variety of coats which are smart and attractive looking.

Some of the imported models give the slightly shortened waist line in the back or in the back and the sides.

Among the novelties being tried out are the separate bolero jackets made of transparent material. They were tried out last season and they met with poor success. It remains to be seen whether they will be adopted this season.

While the regulation coat sleeve is used largely in both tailored and demi-tailored suits, some of the best houses are also employing the kimono sleeve, or a sleeve with a kimono cut set into the armhole. The latter sleeve is made from three-quarters to seven-eighths

length and is finished with a deep turnback cuff.

In the plainer suits, serge, fancy chevrons, and worsteds, in mannish effects, are most desirable. There is also a strong tendency to favor broadcloths, particularly those with high luster finish. Handsome velvet suits are featured in both plain colors and novel striped effects, as well as Bedford cords.

On the page is given an illustration of a smart demi-tailored suit. It has the short jacket, showing the broken lines and a slight cutaway effect. It has a sailor collar finished at the shoulder line with small velvet revers. The sleeve is in kimono effect, with outside finish on shoulders. It has a narrow skirt with front and back panel. Machine stitching of coarse floss is a new note in trimming.

An attractive frock of a three piece costume is also shown. It has a twenty-eight inch coat with the back gathered in at waistline, full length regulation coat sleeves with draped revers of white satin, large buttonholes velvet bound, and simulated underskirt with tunic trimmed in fringe with a ten inch slash at the side. The material is permo in broadcloth pattern. The waist is of white satin partly overlaid with blue tulle and the girdele of the same material, arranged to fall over the skirt top.

Another attractive three-piece model was made with the bodies having a crosswise arrangement of stripes overlaid with chiffon. Hand embroidered collar, lace edged, with low front finish. Straight line skirt finished with a foot band, back panel slash, and a fancy short coat of broadcloth, long shoulder line with set-on sleeves. The materials were a combination of plain and striped materials.

In regard to blouses to wear with the tailored costumes: The chiffon variety is shown in many designs, and soft finished crepes, silks, and satins, too, are well represented. These waists are made with low neck finish and short transparent sleeves, or in styles finished at the throat with a blonde net gimp. In some cases a lace, jetted, or beaded peplum extends below the waist. When these models are worn the appearance of a separate blouse is eliminated, as they have the effect of the soft transparent waists now so extensively seen in gowns.

While all-over lace is being shown, there is a strong tendency to veil the lace. Fichu effects, all kinds of fancy collars, revers, yokes, high collars and cuffs are made in both heavy and fine qualities of lace. Macramé lace is meeting with favor, but is used sparingly on blouses, owing to its heavy appearance. Both imitation and real Venice, baby Irish flit, and cluny of the coarser variety are used.

There is a tendency to favor brighter colors that was noted last season, but the waist matching the suit will dominate the market, however.

And now a word about color: This is most important. Most women made a serious mistake when selecting color for their clothes. They do not consider their individuality. They often choose a color only because it is fashionable. One must consider complexion, hair, and eyes when selecting colors.

In regard to the accessories for the tailored suit: There is a revival of jabot pins of various kinds, chiefly the long haired type; then there is a fad for shell cameo pins. Leading Paris dressmakers are employing cameos as buttons, or as a single fastener on surplice effect waists. As used in Paris the cameos are in round or oval button form, equipped with ring for sewing to the garment.