

WANTED—TO BUY

BEST price paid for 2d hand furniture, carpets, clothing and shoes. Tel. D. 3971.

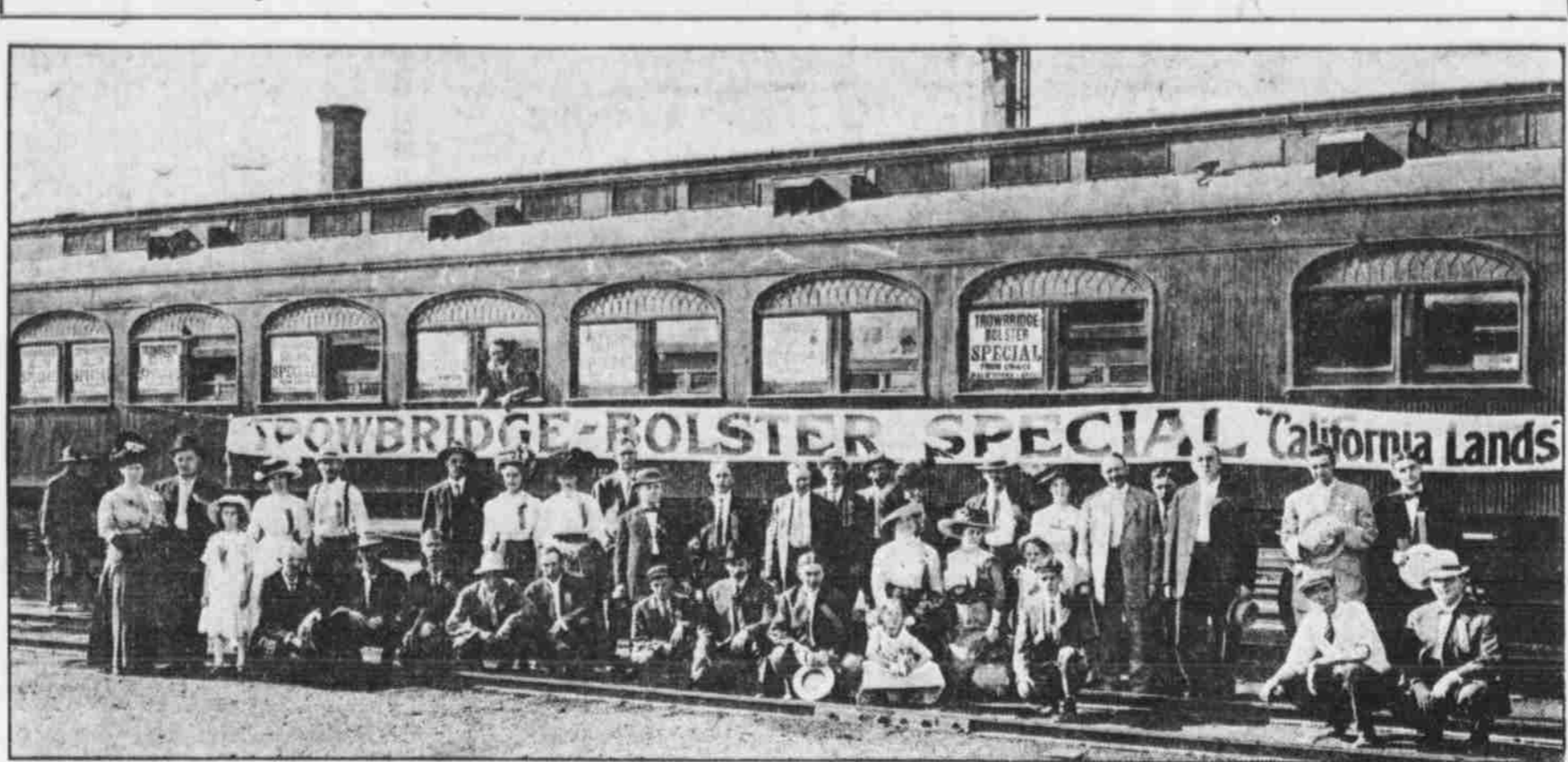
WANTED—TO RENT

SMALL cottage, partly modern; must be in good condition; convenient to school and car line.

WANTED—SITUATIONS

LADY with child wants housecleaning or work of any kind. P. 955, Bee.

Party of Homeseekers Leave Omaha for California



This is a photographic reproduction of the party of homeseekers who departed from Omaha last Thursday for Red Bluff, Cal., where they will acquire many acres of the fine land offered by the Trowbridge-Boister Land company.

GRAIN AND PRODUCE MARKET

Wheat is Higher, Corn Lower and Oats Unchanged in Price.

RECEIPTS SATURDAY ARE LIGHT

Demand for Corn is Very Poor, for Oats Fair and for Wheat Good—More Wheat is Received Than a Year Ago.

OMAHA, Aug. 18, 1911. Wheat was 1/4c higher, corn 1/2c lower, while oats were unchanged. The receipts were light.

OMAHA LIVE STOCK MARKET

Beef Cattle This Week Highest Since Last September.

HOGS MAKE GOOD GAIN FOR WEEK

Light Sheep and Lambs Steady, Heavy Sheep Ten to Quarter and Feeders Fifteen to Forty Cents Higher for Week.

OMAHA, Aug. 18, 1911. Receipts were: Cattle, Hogs, Sheep, and Lambs. The market was generally steady.

OMAHA GENERAL MARKET

BUTTER—No. 1, 1-lb. carton, 25c; No. 1, 1/2-lb. tubs, 25c.

OMAHA GRAIN AND PROVISIONS

CHICAGO, Aug. 18.—Unfavorable threatening of wheat in the Canadian west, the corn being 5/8c to 3/4c over yesterday.

California Lands

have preceded, in the direct result of the advertising secured through the medium of the Omaha Land show which was conducted last January.

The Omaha Bee Great Booklovers' Contest



No. 8—Monday, August 21, 1911.

What Book Does This Picture Represent?

Title Author Your Name Street and Number City or Town

Write in title and author of book and SAVE coupon and picture. Send no coupon until finish of the contest is announced.

Rules of the Contest

All persons are eligible to enter this contest except operators of the Omaha Bee and members of their families. Each day a picture will be published.

FIRST PRIZE Value \$2,000

White Steamer Automobile

A 5-passenger 1911 Model White Steamer Touring Car—odorless, smokeless and noiseless.

SECOND PRIZE Value \$1,250

In the soft, semi-tropic, climatic zone, extending north from San Diego to Shasta County, California.

THIRD PRIZE Value \$900

The magnificent, fancy walnut KREML AUTO GRAND PLAYER-PIANO which nothing can excel.

THE BENNETT CO.

FOURTH PRIZE Value \$275

Balston is to be a manufacturing city. They have a fine start with the Bennett Co. factory.

FIFTH PRIZE, Value \$225

In the same town and with the same prospect of advancement, the Bee has selected a residence for the only interurban trolley line running out of Omaha.

SIXTH, SEVENTH AND EIGHTH PRIZES

This ingenious encyclopedia, which is a development rather than a book, contains the value of hundreds of editors mentally equipped to make one of the greatest recommendations for a work.

NINTH AND TENTH PRIZES

These prizes consist of twenty-four volume cloth bound sets of the "Book of Knowledge," an encyclopedia made especially for children and sold at \$24 a set.

FORTY-FIVE CASH PRIZES

Five Prizes of \$10. Ten Prizes of \$5. Ten Prizes of \$2. Twenty Prizes of \$1.

WATCH FOR THE DAILY PICTURE IN THE BEE.

LEGAL NOTICES

NOTICE TO CONTRACTORS. Sealed bids will be received by the Board of Trustees of the County of Douglas, Nebraska.

GOVERNMENT NOTICES

PROPOSALS FOR BITUMINOUS COAL—Chief Quartermaster's Office, Federal Building, Chicago, Ill., August 18, 1911.

OCEAN STEAMSHIPS

HAMBURG-AMERICAN London—Paris—Hamburg. Departure Aug. 21, 1911.

MINNEAPOLIS, Aug. 18.—WHEAT—September 1911.

Wheat—Sept. 1911, 90c; Oct. 1911, 87c; Nov. 1911, 84c; Dec. 1911, 81c.

NEW YORK, Aug. 18.—SUGAR—Raw firm.

Sugar—Raw firm, 10c; refined, 11c; powdered, 12c.

RECEIPTS SATURDAY ARE LIGHT

Demand for Corn is Very Poor, for Oats Fair and for Wheat Good—More Wheat is Received Than a Year Ago.

OMAHA LIVE STOCK MARKET

Beef Cattle This Week Highest Since Last September. Hogs make good gain for week.

OMAHA GENERAL MARKET

BUTTER—No. 1, 1-lb. carton, 25c; No. 1, 1/2-lb. tubs, 25c.

LEGAL NOTICES

NOTICE TO CONTRACTORS. Sealed bids will be received by the Board of Trustees of the County of Douglas, Nebraska.

GOVERNMENT NOTICES

PROPOSALS FOR BITUMINOUS COAL—Chief Quartermaster's Office, Federal Building, Chicago, Ill., August 18, 1911.

OCEAN STEAMSHIPS

HAMBURG-AMERICAN London—Paris—Hamburg. Departure Aug. 21, 1911.

MINNEAPOLIS, Aug. 18.—WHEAT—September 1911.

Wheat—Sept. 1911, 90c; Oct. 1911, 87c; Nov. 1911, 84c; Dec. 1911, 81c.

NEW YORK, Aug. 18.—SUGAR—Raw firm.

Sugar—Raw firm, 10c; refined, 11c; powdered, 12c.

RECEIPTS SATURDAY ARE LIGHT

Demand for Corn is Very Poor, for Oats Fair and for Wheat Good—More Wheat is Received Than a Year Ago.

OMAHA LIVE STOCK MARKET

Beef Cattle This Week Highest Since Last September. Hogs make good gain for week.

OMAHA GENERAL MARKET

BUTTER—No. 1, 1-lb. carton, 25c; No. 1, 1/2-lb. tubs, 25c.

LEGAL NOTICES

NOTICE TO CONTRACTORS. Sealed bids will be received by the Board of Trustees of the County of Douglas, Nebraska.

GOVERNMENT NOTICES

PROPOSALS FOR BITUMINOUS COAL—Chief Quartermaster's Office, Federal Building, Chicago, Ill., August 18, 1911.

OCEAN STEAMSHIPS

HAMBURG-AMERICAN London—Paris—Hamburg. Departure Aug. 21, 1911.

MINNEAPOLIS, Aug. 18.—WHEAT—September 1911.

Wheat—Sept. 1911, 90c; Oct. 1911, 87c; Nov. 1911, 84c; Dec. 1911, 81c.

NEW YORK, Aug. 18.—SUGAR—Raw firm.

Sugar—Raw firm, 10c; refined, 11c; powdered, 12c.

RECEIPTS SATURDAY ARE LIGHT

Demand for Corn is Very Poor, for Oats Fair and for Wheat Good—More Wheat is Received Than a Year Ago.

OMAHA LIVE STOCK MARKET

Beef Cattle This Week Highest Since Last September. Hogs make good gain for week.

OMAHA GENERAL MARKET

BUTTER—No. 1, 1-lb. carton, 25c; No. 1, 1/2-lb. tubs, 25c.

LEGAL NOTICES

NOTICE TO CONTRACTORS. Sealed bids will be received by the Board of Trustees of the County of Douglas, Nebraska.

GOVERNMENT NOTICES

PROPOSALS FOR BITUMINOUS COAL—Chief Quartermaster's Office, Federal Building, Chicago, Ill., August 18, 1911.

OCEAN STEAMSHIPS

HAMBURG-AMERICAN London—Paris—Hamburg. Departure Aug. 21, 1911.

MINNEAPOLIS, Aug. 18.—WHEAT—September 1911.

Wheat—Sept. 1911, 90c; Oct. 1911, 87c; Nov. 1911, 84c; Dec. 1911, 81c.

NEW YORK, Aug. 18.—SUGAR—Raw firm.

Sugar—Raw firm, 10c; refined, 11c; powdered, 12c.

RECEIPTS SATURDAY ARE LIGHT

Demand for Corn is Very Poor, for Oats Fair and for Wheat Good—More Wheat is Received Than a Year Ago.

OMAHA LIVE STOCK MARKET

Beef Cattle This Week Highest Since Last September. Hogs make good gain for week.

OMAHA GENERAL MARKET

BUTTER—No. 1, 1-lb. carton, 25c; No. 1, 1/2-lb. tubs, 25c.

LEGAL NOTICES

NOTICE TO CONTRACTORS. Sealed bids will be received by the Board of Trustees of the County of Douglas, Nebraska.

GOVERNMENT NOTICES

PROPOSALS FOR BITUMINOUS COAL—Chief Quartermaster's Office, Federal Building, Chicago, Ill., August 18, 1911.

OCEAN STEAMSHIPS

HAMBURG-AMERICAN London—Paris—Hamburg. Departure Aug. 21, 1911.

MINNEAPOLIS, Aug. 18.—WHEAT—September 1911.

Wheat—Sept. 1911, 90c; Oct. 1911, 87c; Nov. 1911, 84c; Dec. 1911, 81c.

NEW YORK, Aug. 18.—SUGAR—Raw firm.

Sugar—Raw firm, 10c; refined, 11c; powdered, 12c.

RECEIPTS SATURDAY ARE LIGHT

Demand for Corn is Very Poor, for Oats Fair and for Wheat Good—More Wheat is Received Than a Year Ago.

OMAHA LIVE STOCK MARKET

Beef Cattle This Week Highest Since Last September. Hogs make good gain for week.

OMAHA GENERAL MARKET

BUTTER—No. 1, 1-lb. carton, 25c; No. 1, 1/2-lb. tubs, 25c.

LEGAL NOTICES

NOTICE TO CONTRACTORS. Sealed bids will be received by the Board of Trustees of the County of Douglas, Nebraska.

GOVERNMENT NOTICES

PROPOSALS FOR BITUMINOUS COAL—Chief Quartermaster's Office, Federal Building, Chicago, Ill., August 18, 1911.

OCEAN STEAMSHIPS

HAMBURG-AMERICAN London—Paris—Hamburg. Departure Aug. 21, 1911.

MINNEAPOLIS, Aug. 18.—WHEAT—September 1911.

Wheat—Sept. 1911, 90c; Oct. 1911, 87c; Nov. 1911, 84c; Dec. 1911, 81c.

NEW YORK, Aug. 18.—SUGAR—Raw firm.

Sugar—Raw firm, 10c; refined, 11c; powdered, 12c.

RECEIPTS SATURDAY ARE LIGHT

Demand for Corn is Very Poor, for Oats Fair and for Wheat Good—More Wheat is Received Than a Year Ago.

OMAHA LIVE STOCK MARKET

Beef Cattle This Week Highest Since Last September. Hogs make good gain for week.

OMAHA GENERAL MARKET

BUTTER—No. 1, 1-lb. carton, 25c; No. 1, 1/2-lb. tubs, 25c.

LEGAL NOTICES

NOTICE TO CONTRACTORS. Sealed bids will be received by the Board of Trustees of the County of Douglas, Nebraska.

GOVERNMENT NOTICES

PROPOSALS FOR BITUMINOUS COAL—Chief Quartermaster's Office, Federal Building, Chicago, Ill., August 18, 1911.

OCEAN STEAMSHIPS

HAMBURG-AMERICAN London—Paris—Hamburg. Departure Aug. 21, 1911.

MINNEAPOLIS, Aug. 18.—WHEAT—September 1911.

Wheat—Sept. 1911, 90c; Oct. 1911, 87c; Nov. 1911, 84c; Dec. 1911, 81c.

NEW YORK, Aug. 18.—SUGAR—Raw firm.

Sugar—Raw firm, 10c; refined, 11c; powdered, 12c.

RECEIPTS SATURDAY ARE LIGHT

Demand for Corn is Very Poor, for Oats Fair and for Wheat Good—More Wheat is Received Than a Year Ago.

OMAHA LIVE STOCK MARKET

Beef Cattle This Week Highest Since Last September. Hogs make good gain for week.

OMAHA GENERAL MARKET

BUTTER—No. 1, 1-lb. carton, 25c; No. 1, 1/2-lb. tubs, 25c.