

COLORADO

Our Next Specially Conducted Excursion Leaves Omaha Tuesday, Aug. 1st to the FAMOUS COSTILLA IRRIGATED LANDS in the BEAUTIFUL SAN LUIS VALLEY

We spend a day in Denver, pass through Colorado Springs, Pueblo, and over the Rockies into the valley to the largest private irrigation project in the United States. Come with us and see the gigantic Sanchez dam, the immense irrigation system in operation, and the great crops now being raised on these lands. There is ample water. No waiting for rain, no drouth, no uncertainty—thus insuring sure and rapid increase in value.

These lands with perpetual water rights and very low maintenance cost sell at \$65 per acre on ten year terms. What are your plans for the future? Let's discuss them in a friendly, helpful way. Just fill out the coupon below or write us fully and we will be glad to give you the information you desire. Better still, call at our office and let us talk face to face with you about the opportunities under the Costilla irrigation project.

If you want to better your condition; if you want a safe and sure investment; if you want an irrigated farm in the beautiful San Luis Valley, with its delightful climate the year through—start planning on a trip with us next Tuesday, August 1st. Take your vacation, spend a week with us and see for yourself.

The round trip fare from Missouri river territory is only \$26.30, and from Denver we furnish free Pullman berths and hotel accommodations while on the Costilla tract. Our parties are large at this time of the year, and you should let us hear from you at once.

SHEDD INVESTMENT CO.

FIFTH FLOOR—RANGE BLDG.

Phones Bell Douglas 4254; Auto A-2305

OMAHA, NEB.

SHEDD INV. CO., Range Bldg., Omaha, Nebraska

Please send your Costilla literature.

NAME
ADDRESS

Cut out this coupon and mail it today.

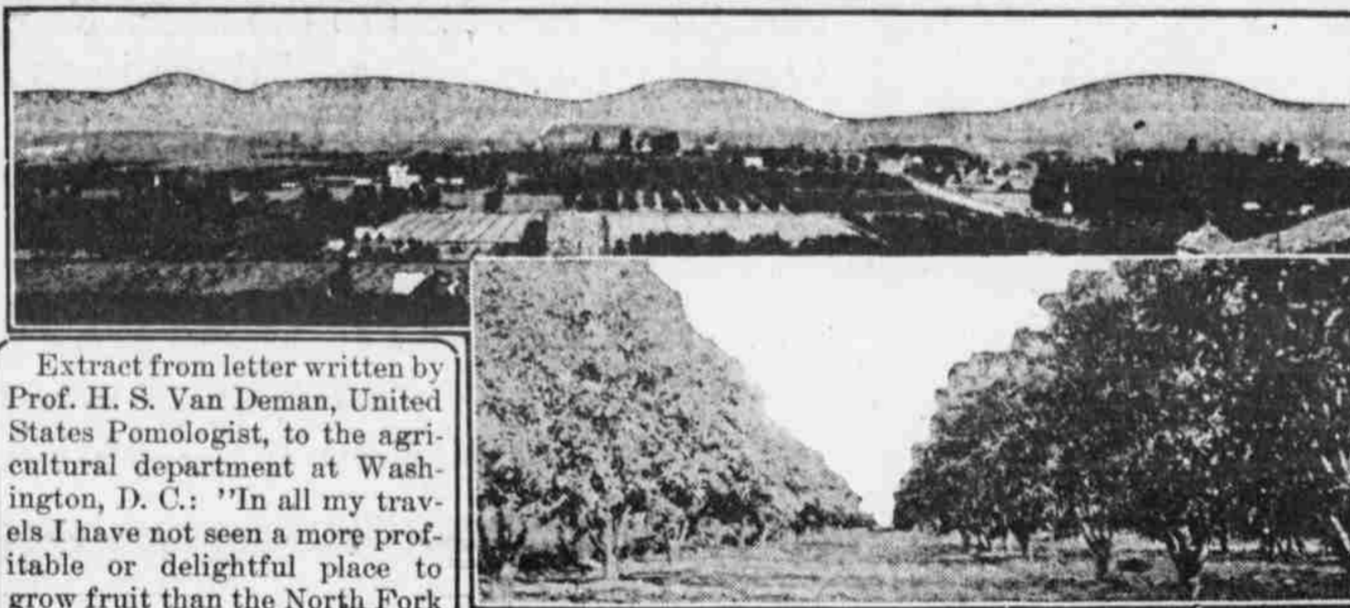
Irrigated Land

Under the Famous La Poudre Dam and Irrigation Project, in North Platte Valley, Douglas, Wyoming.

Irrigation Under Favorable Conditions in An Ideal Locality
Special advantageous arrangement for income from land, to investors who can not farm their own land, for a limited time only.

C. G. CARLSON
SALES MANAGER

300 McCague Building Omaha, Nebraska.



Extract from letter written by Prof. H. S. Van Deman, United States Pomologist, to the agricultural department at Washington, D. C.: "In all my travels I have not seen a more profitable or delightful place to grow fruit than the North Fork of the Gunnison River. The fruit interest here is beginning to over-ride all others, and orchards are being planted in every direction."

For further particulars, call or write
The Inter-Mountain Land Co.
O. Y. BAKER, Manager.

1122 Farnam Street, Omaha, Nebraska

IRRIGATION

Means close communities and increased values because of increased production. Come to Wyoming, where the land produces the most.

Rock Creek Conservation Company
623 Bee Building, Omaha, Neb.

GET NEAR A LIVE CITY

Antero Irrigated Lands near Denver on Easy Payments.
Call or write:

SAUNDERS SUBURBAN HOMES CO.
1530 City National Bank Bldg., Omaha Neb.

Oregon Farm and Fruit Land

In the Southern Willamette Valley, nothing better in the state; fine climate, fine soil; fine people; no saloons; fine markets; good transportation facilities; fine schools. Prices and terms are right. Write for information.

The World Investment Co.
Omaha, Neb.

GREAT YIELDS IN SAN LUIS

Costilla Irrigated Lands in Colorado Attracting Attention.

FARMERS GROWING WEALTHY

Immense Sanchez Reservoirs in Foot-hills of Culebra Range is the Largest of Nine Basins Being Built.

H. G. Shedd of the Shedd Investment Company returned recently from a trip to the San Luis valley of southern Colorado, where he is interested in the Costilla Irrigated Land company. He reports that the whole of the San Luis valley is just on the eve of harvesting the greatest crop of small grain, alfalfa and potatoes in its history. The yield of alfalfa is unusually heavy, and owing to the scarcity of hay in the prairie country, is already commanding a high price. Wheat is to be seen five feet high and with immense heads, which will thresh out from fifty to sixty bushels to the acre; while the potato crop threatens, at the high price of that product, owing to the fact that the San Luis valley farmers wealthy on this year's returns. Owing to the fact that the San Luis valley potato crop is harvested about two weeks earlier than the crop in Northern Colorado, the Denver & Rio Grande railway is preparing to rush all available cars into the valley to place these potatoes on the market at the earliest opportunity. It is estimated that 6,000 carloads of irrigated potatoes from the San Luis valley will be sent to the eastern markets. Owing to the holding of the sugar beet factory at Monte Vista, the raising of sugar beets has been greatly stimulated and the acreage in beets this year is large. Work on this factory is progressing rapidly and it is expected to be completed in time for the sugar campaign of the coming winter.

Great Sanchez Reservoir.
The one project in the San Luis valley which is attracting national attention is the completion of the immense Sanchez

reservoir in the foothills of the Culebra range, just east of the town of San Acacio. This is the largest of nine reservoirs being built by the Costilla Estates Development company with which Mr. Shedd's company is associated. This reservoir, which is now practically complete and is rapidly filling with water, is five miles in length and two and one-half miles wide and has a water depth of 120 feet in the deepest point. By a system of intercepting canals the entire run-off of the Culebra range for 100 miles is emptied into this reservoir to be diverted upon the 100,000 acres of the Costilla estate lying in the valley below. This mammoth reservoir, which is seventeen and one-half miles around its shore line at high water mark and will store 4,500,000,000 cubic feet of water, is one of the very largest reservoirs in the United States. The dam which holds the water in place is 1400 feet long on top, 600 feet thick at the base and 120 feet high. Through the center of the dam a concrete cut-off wall has been constructed and on the reservoir side a steel and concrete tower 150 feet high. This tower has eight sets of valves operated by levers from the top and opening into the inside of the reservoir. The water passes into this tower and out through an arched outlet tunnel built through the dam 900 feet long. Owing to the completion of this reservoir and the rapid settlement of the Costilla estate, there is great activity on the Costilla estate. A large number of farmers from Iowa and Nebraska and the irrigated sections of Colorado have been moving upon these lands and placing them under cultivation during the last year and all of them have been uniformly successful with their first year's crops, enjoying immense yields of alfalfa, small grain, field peas and potatoes. Comfortable farm homes have been erected and there is not a claim shack on the entire estate, while many of the bungalow homes in the thriving towns of San Acacio and Mesita are equal to any found in Omaha and Denver.

The Financial Backing.
The company financing this project, which

DELTA COUNTY TO THE FRONT

Colorado County is Given Strong Boost by Orchardist.

HOTCHKISS TO GET A RAILROAD

O. Y. Baker of That City Tells of the Wonders of His County—Two Hundred Bushels of Tubers to the Acre.

O. Y. Baker, orchardist, from Hotchkiss, Colo., called at the office of The Omaha Bee and has the following to report regarding the future prospects for crops in Delta county, Colorado, and its past history: "The climatic conditions have been normal and Delta county will, as usual, ship a large crop of apples, peaches and other fruits this year. The apple crop is the principal fruit and the crop will be heavier

than ever before on account of many new orchards just coming into bearing. Peaches will be in abundance and of the very highest quality. The Hotchkiss vicinity will furnish at least 500 cars of apples and peaches. The cantaloupe industry is a new one and is growing rapidly. "Delta county has taken first and second premiums for cantaloupes at the state fair for the last six years. Sugar beets will make a heavy yield. There is in the neighborhood of 500 acres of potatoes grown in the vicinity of Hotchkiss, and which will yield an average of 200 bushels to the acre. Alfalfa is also a very important crop. "Hotchkiss has the promise of a new railroad which will traverse the southeastern part of the county and will furnish hundreds of rich acres with good transportation, and will mean much for the town of Hotchkiss. A new gypsum plant is to be erected at Hotchkiss, having a daily capacity of 400 barrels. The opening of the new Burdick coal mine three miles north of Hotchkiss also means new business for the town. "The Delta County Business Men's association have challenged any county in the United States to equal its shipments of deciduous fruits, and as an evidence of its good intent and purposes it has placed in the Delta National bank of Delta, Colo., the sum of \$100,000, as a forfeit to be paid to the county meeting the conditions of said challenge. "The climate of Delta county is ideal for fruit growing. The average altitude is 5,200 feet. The high mountains which almost entirely surround the valley and mesas of the Gunnison and North Fork rivers, regulate the climate. They obstruct the high winds so that storms are unknown in the valleys. The clouds being attracted to the mountains by magnetic influence, assure the agricultural and horticultural sections of 320 days of sunshine. "This is the recipe that makes the Colorado quality: (1) A rich soil; (2) constant sunshine; (3) cool air; (4) the system of irrigation that brings water to the roots of the plants without shutting off the sunshine from the leaves. Incidentally, the

climate which is best for an apple and best for a peach is best for a human being. Twenty-eight years ago Delta county was a Ute Indian reservation. Today Delta county is pre-eminently the greatest fruit producing county in America. "In 1895 a few orchards came into bearing. In 1899 there were 30,000 acres of developed orchards. The farmers received \$4,000,000 for their crops. There were 4,700 cars of fruit shipped. The apple growers received \$2,500,000; peach growers \$800,000; sugar beet growers \$250,000; potato growers \$15,000; small fruit growers \$10,000; bee keepers \$50,000 for their honey. "Did the Nile, or any other valley ever equal in its palmest days, the productive wealth of the Great North Fork country in Delta county, Colorado?"

MANY USES FOR EUCALYPTUS

Used for All Sorts of Building and Has Several By-Products.

BIG PROFITS IN GROWING IT

It Yields Honey, Oil for Healing Wounds, Provides Fuel, Supplies Ties and is Used for Implements and Furniture.

An Omaha man, in an interview with the Bee representative, had some interesting things to say regarding eucalyptus, a wonderful forestry product in California. He said: "One evening sometime ago while dining with a friend, our conversation touched on the subject of investments. He remarked he had just made one of the best investments he had ever heard of. Of course, I asked him what it was. He replied, 'I paid \$1,500 for ten acres of eucalyptus land in California.' I looked sorrowfully at him and wondered how he expected to realize from the oil he would get from that number of trees, although I knew its great value for medicinal uses. Imagine my surprise when he told me the oil was simply

producing in a single decade material for this multitude of purposes." "It is not improbable for one to imagine a little way into the future when our native timber will be depleted, that eucalyptus wood will be very valuable and that it will be one of the staple sources of income of California, the only state where for climatic reasons it seems to thrive. "My friend being very enthusiastic on the subject, told me things about this timber that sounded rather fanciful to me and finally I said to him, 'I do not believe your statements in reference to the value of the timber, its uses and rapid growth.' He said he would get me the government reports, state forester of California official report, the Berkeley experimental station report, Forestry society bulletins and prospectuses of several companies with which he was familiar. He told me an acre of this hard wood timber was worth \$2,500 in ten years for the timber alone, and that it reproduced itself from the sprout growth in less time than the original tree, and that it would continue to do so for generations every time it is cut. "Within a few days I received bulletins, and soon found my friend's statements were backed up by the government reports. I found the wood has been used for everything any of the other hard woods are used for, in fact, an excellent substitute for mahogany, oak, hickory, etc. "Naturally I became very much interested in a wood that could be produced in so short a time and be of such a variety of uses, and when I again saw my friend, asked him if he could not get some samples. He told me he had just learned that L. R. Yost has a very fine display of the wood at 212 McCague building and advised me to see him, which I did, and learned a great deal more about this wonderful wood, fully agreeing with my friend about his investment. "The following quotation gives some of the various uses of this wonderful tree. The yielding of honey for the delectation of the palate and oil for the healing of wounds and maladies; the production of fuel for the fire and factory; the supplying of ties for railways, posts for fences, piles for wharves, timber for bridges and poles for trolley, telephone and telegraph lines; the furnishing of material for vehicles, for implements, for furniture and for the embellishment of our dwelling houses; the saving of millions of our native trees by

producing in a single decade material for this multitude of purposes."

It is not improbable for one to imagine a little way into the future when our native timber will be depleted, that eucalyptus wood will be very valuable and that it will be one of the staple sources of income of California, the only state where for climatic reasons it seems to thrive.

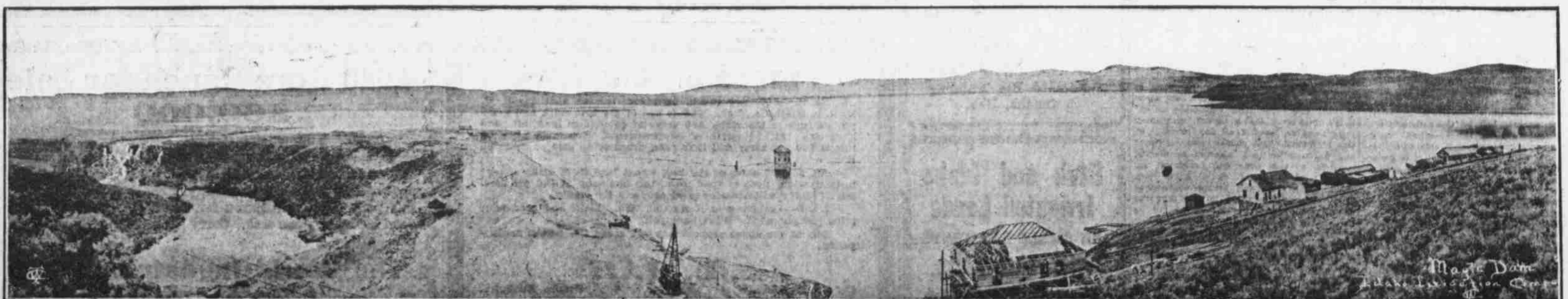
GREAT MAGIC EARTH DAM ON THE BIG WOOD RIVER

Immense Structure that Holds Back Water Enough for 150,000 Acres of Land.

The completion of the magic reservoir on Big Wood river was finished, the heaviest part of the construction work on the Big Wood river project and insures ample water supply for all the land near Richfield, Rhoshone, Gooding and Dietrich. Not only is the reservoir, which lies twenty-five miles north of Richfield in the canon of the Big Wood river filled to its capacity, but water has been pouring from the spillway ever since it was poured by heavy rains in April. So far as known this is the highest earth dam in the world.

It is 140 feet high from base to crest, and carries water to a depth of 120 feet at the spillway level. The dam contains approximately 20,000 cubic yards of earth and cost about \$1,000,000. The reservoir forms a large lake twelve miles in length by two miles in width and contains 200,000 acre feet of water. This, with the addition of the normal flow of the Big Wood river, gives sufficient water for the irrigation of the 150,000 acres of land. Not only will this be the means of supplying irrigation water for a rich section which, up to this time has not been available for cultivation, but on the lake will be established a resort and the waters will be stocked with game fish. The Big Wood river project lies midway between the Twin Falls district and the rich mining section near Hatley, and as it is crossed by the main line of the Oregon Short Line railroad, it is one of the most easily reached districts in the state.

Great Dam that Forms Integral Part of Important Irrigation Project in Idaho



MAGIC RESERVOIR ON BIG WOOD RIVER, WHERE THE HIGHEST EARTH DAM IN THE WORLD HOLDS BACK A LAKE TWELVE MILES LONG AND TWO MILES WIDE, SUPPLYING WATER FOR 150,000 ACRES OF LAND.