

Railroads Smile on Omaha and Its Progressive Firms

RAILS GO TO ALL SECTIONS

Greatest Railroads Run from Omaha, Piercing Vast Territory.

AID TO GATEWAYS INDUSTRIES

Ideal Firms Can Send Goods in Rapid Time to All Sections, with the Freight Charges Most Favorable.

Back in the early days of the west the master railroad builders made Omaha the eastern terminal of the great Union Pacific railroad. Ever since that time this city has been one of the greatest railroad centers in the United States. It is directly fed by 21,000 miles of steel track and is served by eleven excellent roads that daily bring thousands of people into this city. Five of these roads are transcontinental trunk lines, which carry millions through this prosperous city every year. Omaha, because of these transcontinental lines, is a favorite "stopping over" place for the travelers who journey from the east to the west or from the west to the east.

The railroads that serve Omaha are: Union Pacific, Chicago, Milwaukee & St. Paul, Chicago & Northwestern, Chicago, St. Paul, Minneapolis & Omaha, Chicago, Burlington & Quincy, Burlington and Missouri River railway, Missouri Pacific, Chicago, Rock Island & Pacific, Illinois Central, Chicago Great Western and Wabash.

Within One Night's Ride.
By these eleven lines Omaha is directly in connection with fifteen western states and all their leading cities and roads leave Omaha for practically all parts of the country. Travelers from any of the cities in these states are within one night's ride of Omaha, St. Louis, Louisville, Oklahoma City, Little Rock, Duluth, Denver, Cheyenne, Minneapolis, St. Paul, Milwaukee, Chicago, Indianapolis—any of these cities is but a few hours' ride from this market town. Get into a sleeper tonight at any of these cities and you are hurried to Omaha so that you are ready for business here early the next morning.

The excellent railroad facilities afford Omaha jobbers and wholesalers the means with which to successfully compete with other cities for trade in the western territory. They also give the merchants of the small towns in these various western states advantages for coming to Omaha and doing buying. The fact that from any of the towns and cities within a long radius of this city one can come to Omaha in a night makes it convenient for the merchant to ride into Omaha (arriving here early in the morning) and do his trading in a short time and then, if he is in a great hurry,

catch a train back to his home town. He makes the trip and buys his goods with only the loss of one day from his business.

Boost for Omaha.
Will A. Campbell, until very recently, manager of the Publicity Bureau Commercial club of Omaha, and the man who knows a great deal about the traffic and commercial situation of the west, wrote as follows regarding Omaha's favorable location in railroads:

"Aerial architecture built by the city boomers of the west twenty-five or thirty years ago, would now make only a pleasant suburb for the trade and industrial centers, which have developed from the military trading posts of our school books; from the steamboat landings and town sites stalked out by the railways over old Indian graves."

"There be three things," says the essayist, "which make a nation great; a fertile soil, busy workshops and easy conveyance for men and commodities from one place to another."

"This rule may be rigidly applied to the average American city when surrounded by land of immeasurable fertility, made readily accessible to the markets by thousands of miles of railroad, a land receiving in due measure the kiss of the sun and the benediction of the rain, the workshops are sure to come, and the prosperity of a city so located is almost inevitable."

WONDERFUL GAIN IN 1910

(Continued from Page Two.)

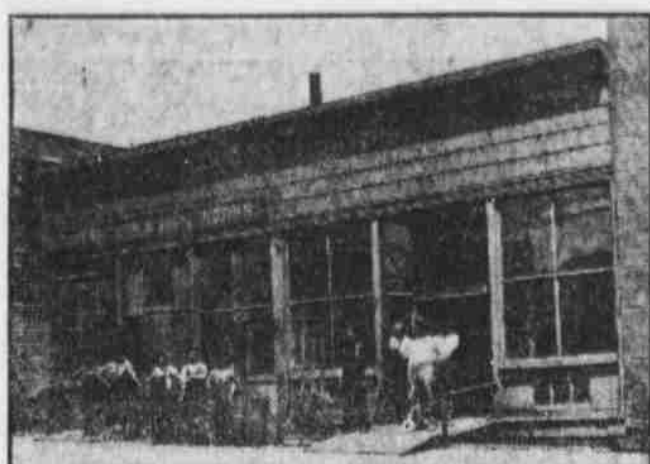
types and nickeltypes amounted to \$100,000 in 1910. Omaha has one of the best type foundries in the west. It is the Barnhart Brothers & Spindler, who are successors to the Great Western Type foundry.

Cornices and Sheet Steel.
Manufacturers of cornices and sheet metal totaled a business of \$153,000 in 1910. The trade in this line has increased rapidly and the local firms are among the most prosperous in this section of the west.

Omaha's Crockery Trade.
The crockery jobbing houses were very prosperous during 1910, when their business totaled \$406,000. For this year the outlook is excellent, and all the firms expect to break all previous records by many thousands of dollars.

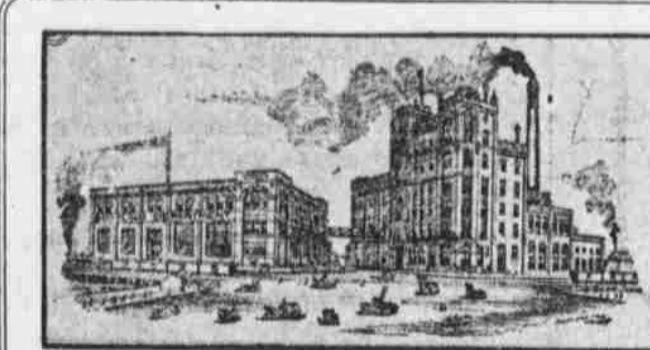
Pipes, Iron, Etc.
In 1910, the manufacturers of pipes did a business which amounted to \$20,000. Iron and structural steel business amounted to \$200,000. Plumbing and heating supplies were sold in very large quantities and the jobbing business of the city totaled \$4,300,000.

Building Permits.
Marion Scott, 1612 Douglas, repairs, \$2,500; I. Gluck, 167-9 North Fortieth, brick store, \$2,000; G. W. Barker and D. L. Bryant, 415 North Twenty-fourth, brick store, \$2,500; B. J. Scannell, 2658 Fowler, frame dwelling, \$2,500.



WESTERN IRON AND WIRE WORKS

The Western Iron and Wire Works are located at 1116-1118 Jackson street. This company has prospered with all the leading firms of the city and now is one of the best of its kind in the west. It furnishes balconies, bank grilles, bank railings, bank wickets, counter railings, elevator cabs, joint hangers, joist anchors, lockers, metal frames for signs, office stalls, office railings, ornamental arches and fences, poultry bottoms, screen cloth, steel pans, steel gates, window guards, wire and iron work of all descriptions.



METZ BROS. BREWING CO.

There is hardly any one in the middle west who has not heard of Metz Bros.' Brewing company, a firm that is one of Omaha's oldest and most prosperous. This company brews and bottles fine beer. The new brewery and bottling department are the most modern and complete in the country. The plant is located at Sixth and Leavenworth streets. Business with this firm in 1911 will be the largest in the company's history.



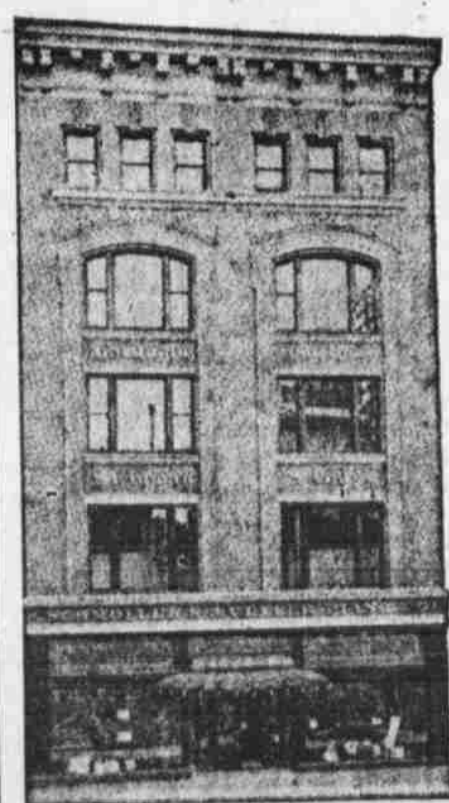
R. L. CARTER SHEET METAL CO.

The Carter Sheet Metal company is one of the chief houses of its kind in the state and enjoys the patronage of a wide territory in the middle west. Sheet metal sales with this firm have grown by bounds this year. All the supplies handled here are of absolutely the best quality, and the firm has secured a reputation for selling the best goods at the lowest prices.



BARNHART BROTHERS & SPINDLER

Barnhart Brothers & Spindler, successors to the Great Western Type Foundry, is the only type foundry in Omaha and is rated as one of the best in the west. S. J. Potter is manager of the company, and to him great credit is due for the success of the firm in this city. The plant is located at 1114-16 Howard St., and here are made superior copper-mixed type, brass rule, leads, slugs, metal furniture, printing material of all kinds, cylinder and platen presses, electric-welded steel chases, hand and power paper cutters, labor saving iron furniture and complete printing outfits.



SCHMOLLER & MUELLER

Schmoller & Mueller were established in Omaha in 1859, making them one of the pioneers in this city. At 1311-13 Farnam street they have a large retail establishment where they sell thousands of pianos every year. This company also manufactures pianos and during the past few years has enjoyed a wide sale on its own make. Stores are also maintained at Sioux City, Lincoln, Council Bluffs, South Omaha and Mitchell, S. D.



DAVID COLE CREAMERY CO.

The David Cole Creamery Company, of which David Cole is president, is located at 501 South Tenth street. It is known as one of the best creameries in this section of the country. The famous Idlewild brand of butter is made by this company. The sales of this butter are very large in Omaha and Nebraska. The Cole Creamery is very prosperous and is doing a very large business. It is growing rapidly and this year will record a record breaking business.



OMAHA WOOD WORKING CO.

Twelve years ago the Omaha Wood Working company was started in Omaha and has been growing rapidly ever since. This company manufactures hardwood interior finish, sash, doors, mouldings and stairs. Store, bank and office fixtures, plate, window and art glass are sold by the firm. John F. Ryan and G. A. Sandell are the members of the company. The establishment is located at 1029-1035 South Eighteenth street, Omaha.



LOUIS G. DOUP

Louis G. Doup, 1301-1311 Nicholas street, manufacturers of bedding and upholstered furniture. The trade of this company is very large in Nebraska and other western states and the brands of goods made in this factory are very popular. They are of the quality that makes dealers place larger orders every season because the goods sell rapidly. The upholstered furniture made here is artistic and very beautiful. It is substantially constructed.



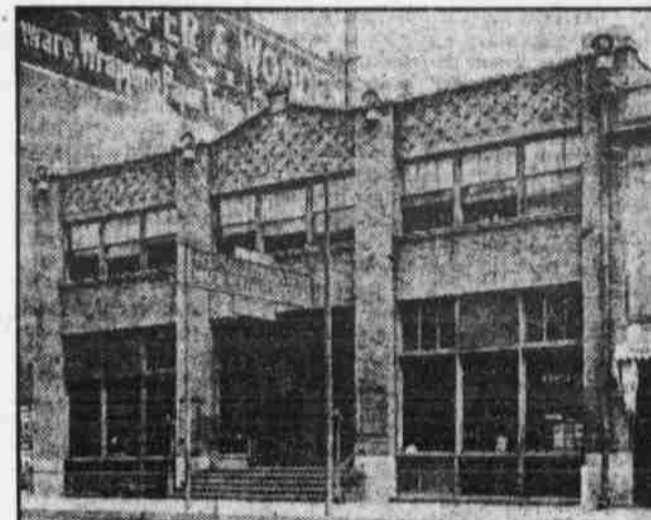
BOYLES BUSINESS COLLEGE

Among the leading educational institutions of the city is Boyles Business College, the place in which the young men and women of Omaha and the west secure a first-class commercial training. The school is one of the best of its kind in the west and has established a wide reputation for doing thorough work with all its pupils. It annually turns out a large number of young men and women, well equipped for entering the business field. It is located at Eighteenth and Harney streets.



HAYWARD BROS. SHOE CO.

Among the very important firms of the city is the Hayward Bros. Shoe company, manufacturing distributor of specialties in footwear. The firm is located at 1119-23 Howard street. It is agent for the footwear of the Hood Rubber company and the Old Colony Rubber company of Boston. The name of Hayward is known all over the middle west and the shoes of this company are sold in nearly every town of Nebraska and adjoining states.



SUNDERLAND MACHINERY & SUPPLY COMPANY

At 1006-8-10 Douglas street is located the Sunderland Machinery & Supply Co., large dealers in mill and steam supplies, power plant equipment, etc. They are general machinists and engineers and have established themselves in a firm position among the high class concerns of their character in the west. They sell all supplies that are needed for mills, for steam engines and for various kinds of machinery.



CRANE COMPANY

The Crane company, Tenth and Harney streets, is known to all the west as one of the best companies of its kind in this section of the west. It does a wholesale business in steam, gas and plumbing supplies. Elevators are sold here. The firm has many traveling salesmen on the road and has won territory in all the western territory. Its business has increased several fold during the past six months, and the outlook is for a record breaking year in 1911.



A. I. ROOT, Inc.

The A. I. Root Company, 1210 Howard street, is one of the best printing companies in the west. Its reputation for excellent work has spread even beyond the confines of this country and orders have been received for work from China. Book binding and printing of all sorts are done. Samples of this company's work are the pride of Omaha, for some of the books they have printed are unexcelled even by the large houses of New York and other eastern cities. When people of Nebraska want their printing done right they go to A. I. Root.



HOTELS ROME AND MILLARD

The Hotels Rome and Millard, of which Rome Miller is proprietor have a national wide reputation. They are modern in every respect and cater to the best trade that comes to the city. The Rome, one of the best hotels in the west, is located at Sixteenth and Jackson streets. The Millard is located at Thirteenth and Douglas streets. The Rome is unexcelled for its beauty and modern appointments. The Millard is run on both the American and European plans. American plan it is \$2.00 per day and up. European the rates are \$1.00 and up.



MARKS BROS. SADDLERY CO.

The Marks Bros. Saddlery Co., is located at 1102-1111 Howard street, Omaha. It is a wholesale manufacturing establishment for harness and saddlery. Traveling salesmen cover all the territory claimed as Omaha's selling ground. Some of the finest harness turned out in the west is made by this firm. Its business has kept pace with the progress of Omaha and has shown a great increase during the past two years.