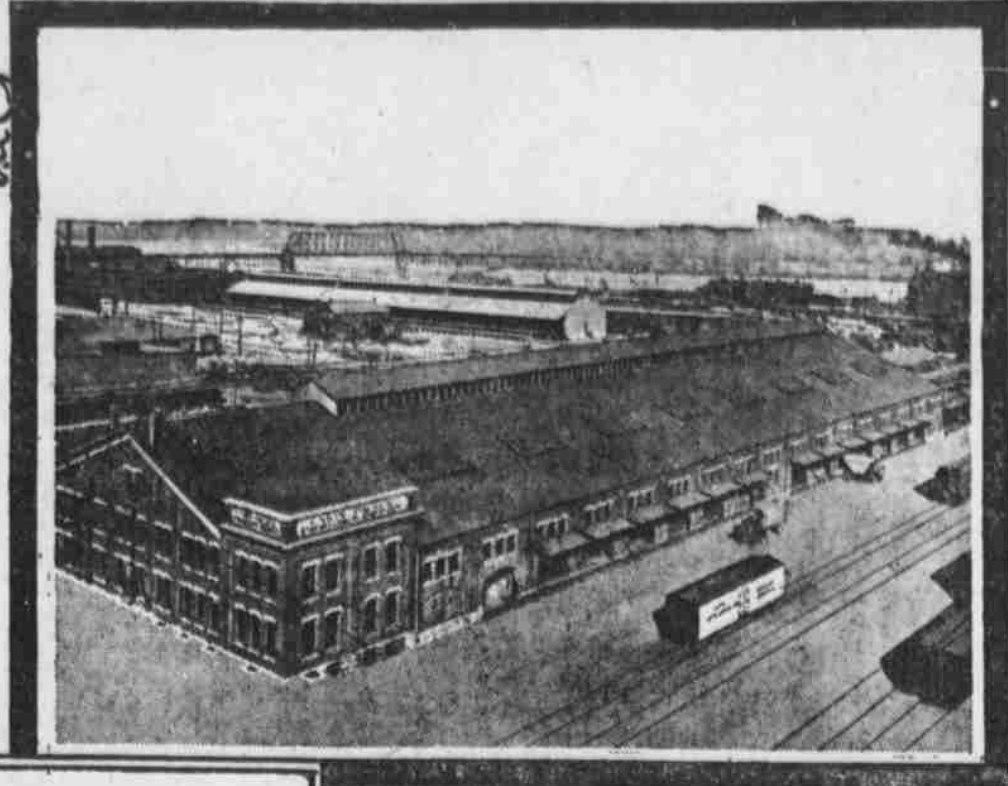


Commissary, Near Union Station

The Safe and Satisfactory Way for All Travel



Freight Depot

Standard Road of the West

Electric Block Signals

Dustless, Perfect Track



UNION PACIFIC

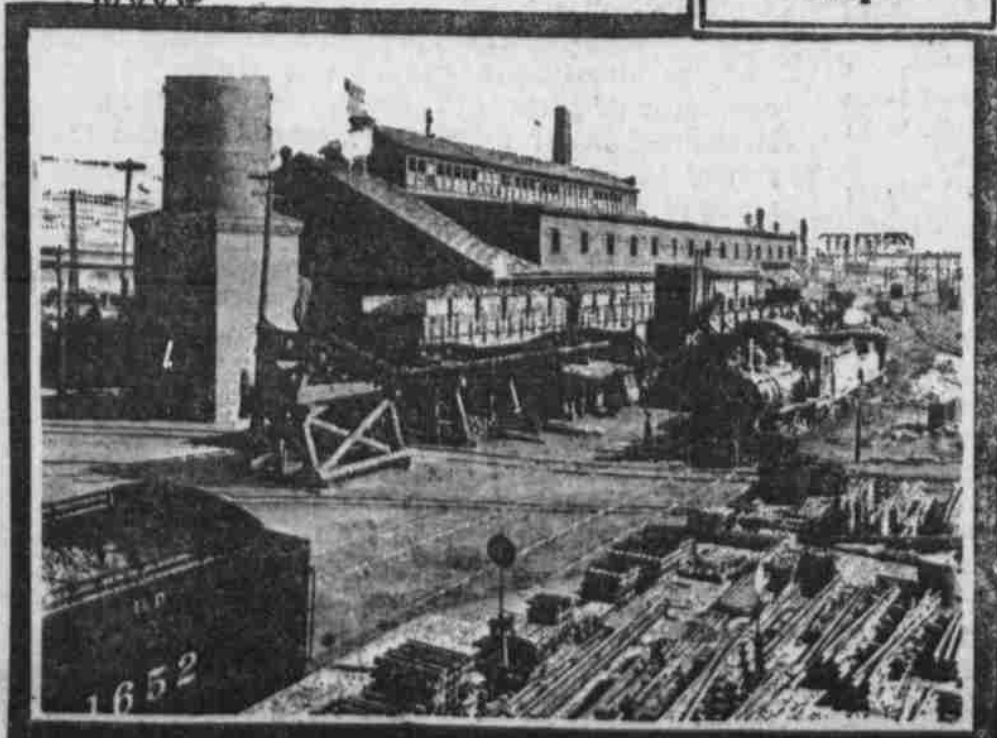


NEW HEADQUARTERS OMAHA

New Steel Equipment

Excellent Dining Cars

Section of Material Yards Union Pacific Shops



THE Union Pacific Railroad Company is now completing, at the northeast corner of Fifteenth and Dodge streets, a twelve-story and basement office building, 173 feet high, with a frontage of 199 feet on Dodge street and 146 on Fifteenth street, with a court 24 feet wide. The building of modern fireproof skeleton construction. Maine granite is used for the base; the exterior of the lower three stories is of Bedford stone, the upper stories being grey brick with grey terra cotta trimmings. The interior trimming will be of quarter-sawn oak and Colorado marble.
Approximate cost of building, when completed, will be \$1,400,000. It is expected the offices will be ready for occupancy the latter part of 1911.

For literature and information relative to fares, routes, call 61 or address
CITY TICKET OFFICE, 1324 Farnam St., Omaha, Neb.
Phones—Douglas 1828; Ind. A-3231.

San Francisco Overland Limited Obeying "Stop" Signal

