

Nebraska

GUYE FORMS NEW RULES

Regulations Cover Places Where Right or More Persons Work. COMPLETES WITH NEW LABOR ACT

New Law Imposes Penalties and Provides Ways Whereby Injured Persons May Recover Damages.

(From a Staff Correspondent.) LINCOLN, May 21.—(Special.)—For the enforcement of the new law relating to the regulation of the sanitation of factories, mercantile and mechanical establishments where eight or more persons are employed, and for the proper protection of life and limb in such places, Deputy Labor Commissioner Guye has formulated an extensive set of rules which are to be followed in the state under the provisions of the new act. The new law imposes penalties and provides ways whereby persons injured through a failure to comply with the law may recover damages. The rules as given out by Commissioner Guye are as follows:

- All safeguards and safety devices and dangerous machinery shall be provided with a bright vermilion red.
- All exposed gears or shafts shall be enclosed in metal.
- Every protruding set screw in collars and couplings on shafts or other revolving machinery shall be countersunk or covered with metal boxing.
- Keys on shafting, wheels, etc., shall not be allowed to project from ends of shafting and all dead ends of shafting shall be enclosed in metal castings or boxings.
- Fully, belts and shaftings must be protected by a covering of metal or other suitable material.
- Belts should never be allowed to rest on shafting when machinery is in motion. Rest hooks must be provided which will hold the belt from slipping off the pulley.
- All overhead shafting, pulleys and belt hangers shall be not more than nine feet from the floor when in operation.
- All belts must be provided with shifters which can be operated from the floor or should be provided with friction clutches.
- All machinery known as roll feed in which the operator feeds, by hand, the material, there shall be placed at the point where the material enters the mill or mill guard. A device for instantly stopping the machine by the hand or foot shall also be provided which can be operated from the point of the operator when operating the machine.
- There shall be placed around each extractor, when in motion, a metal or other suitable material.
- Wood Working Machinery.

- Wood working machinery is among the most dangerous of any used in industry. The circular saw, band saw, planer, wood shapers and the many other sharp-edged tools cannot always be made absolutely harmless. And yet it is possible to reduce the danger materially and often altogether.
- An effective and simple help is a rubber mat to prevent the operator from slipping. Circular saw guards are made of many different kinds, and various styles suitable to the machine.
- A simple arrangement of wooden boxes or partitions will accomplish the desired object with the band saw. This guard will catch the saw if broken and should also contain an exhaust to carry away the sawdust.
- Wood planers, wood shapers, swing saws, equalizing saws, circular heading joints, wood postholes, buzz planers, lathe joints and all similar machines used in mill and wood working factories, shall be equipped with safety devices necessary for the protection of the operators.

- Electrical.
- All floors involving dangerous connections with metal at high pressure shall be covered with insulating mats and kept at all times effectively insulated.
- Signs or indicating lamps must be used at all switches in electric lines and power plants or other places where high pressure currents are used, to show whether the current is on or off each circuit.
- When current is turned off a circuit, for repair, the switch must first be tagged as a means of showing for whom it is turned off and shall remain in that position until the person for whom switch is so tagged, shall not be removed or current turned on until the person for whom it was tagged shall notify the operator that his work has ceased.
- All generating machines, dynamo motors and transformer boxes shall be effectively grounded and should be surrounded with wooden fencing or other non-conducting material.

- Elevators.
- Every elevator, whether freight or passenger, shall be equipped with a speed governor safety device.
- Every elevator shall be equipped with gates or doors to be not less than six feet in height. Lever bars or chains shall not be used.
- All freight elevators shall be equipped with a signal or gong to warn persons of its approach.
- All catches or locks on elevator doors must be kept in good order.
- All freight elevators must be enclosed in all directions to the height of not less than six feet.

- Boilers.
- When a number of boilers deliver to common steam pipes there must always be a shut-off or throttle valve for each boiler to take it out of service for repairs, and inspection, which access to the steam chest of the workman. A metal shield shall be constructed covering the sandboxes of the valve between the workman and containing a hump and lock, and said shield to be painted red and marked with the word "DANGER". The workman shall be allowed to retain his key in his possession while in said boiler.

- Fire Escapes.
- Every factory or other institution, more than two stories in height, must be equipped with outside fire-proof, iron stairways, chutes or toboggans, and with automatic metallic fire escape for every twenty-five persons working or congregating thereon, and which shall be in good order for any reason, are unable to reach or use the said fire-proof stairways, chutes or toboggans.
- All fire escapes of every nature and design must be approved by the deputy commissioner of fire. All ladders furnished upon application.
- Child Labor.
- Statutes No. 678. No child under the age of fourteen (14) years shall be employed, permitted, or allowed to work in or in connection with any theater, concert hall, or place of amusement, or in any place where intoxicating liquors are sold in any mercantile institution, store, office, hotel, laundry, factory or workshop.
- Children between the ages of fourteen (14) and sixteen (16) years can be employed only upon a certificate from the school superintendent or school officers in charge.
- Day.
- Statutes No. 682. No person shall be employed to exceed ten (10) hours in any one day.
- Woman Labor.
- Statutes No. 688. It shall be the duty of every agent, proprietor, superintendent or employer of female help in stores, offices or elsewhere, within this state, to provide a chair, stool or seat for each and every such employee, upon which these female workers shall be allowed to rest when their duties will permit.
- No female shall be employed in any factory or other institution, more than ten (10) hours in any one day, and shall not be employed between the hours of 10 o'clock p. m. and 4 o'clock a. m.

New School House at Nashville.

Detailed Census of Nebraska Counties.

The director of the census has announced the population of Garden county, according to its minor civil divisions, as follows:

1900	1906	1910	
1,285	1,688	2,136	
Blue Creek precinct.....	336	486	636
Green precinct.....	144	180	220
Lewis precinct.....	320	396	492
Lost Creek precinct.....	96	120	156
Park precinct.....	120	144	180
Robinson precinct.....	384	480	612
Rush Creek precinct.....	240	300	372
Saginaw precinct.....	288	360	456

The director of the census has announced the population of Garfield county, according to its minor civil divisions, as follows:

1900	1906	1910
1,200	1,440	1,760

McFadden Appointed Inspector of Hotels

New Office Created by Bulls Hotel Act to be Filled by Hastings Traveling Man.

(From a Staff Correspondent.) LINCOLN, Neb., May 21.—(Special Telegram.)—R. D. McFadden, a well known traveling man of Hastings, was this morning appointed a hotel inspector under the provisions of the Bulls hotel bill, passed at the recent session of the legislature. He is to receive a salary of \$5 per day while engaged in the work. The appointment becomes effective July 1, when the new law goes into force. The Bulls act provides for the more stringent regulation of all hotels in the state. It carried an appropriation of \$5,000 for the execution of the provisions of the act.

TORK IS TO PLAY THE HOST

Nebraska Naabys Will be Treated Royally at Convention. TORK, Neb., May 21.—(Special.)—The Tork Commercial club, co-operating with the local committee to make the state postmaster's convention to be held in Tork, an event that will be remembered by every postmaster in Nebraska who attends. The club has offered their beautiful clubhouse for the use of the visitors and they propose to assist.

The meeting promises to be one of the most profitable by reason of information and instructions to be given by a complete, experienced postmaster on managing and working of postal savings banks which are now being established at the rate of 100 a week and every postmaster attending this convention will receive instructions and information that will be

Crabtree Leaves the Race

Formerly Withdraws from Contest for Presidency of National Educational Association.

(From a Staff Correspondent.) LINCOLN, May 21.—(Special.)—State Superintendent J. W. Crabtree, whose name has been mentioned frequently in connection with the presidency of the National Educational Association, has formally withdrawn from the race and has issued a statement in which he asserts that he will support principles advocated by Mrs. Ella Plag Young of Chicago and Dr. J. T. Joyner in their fight to compel an investigation of the finances of the association.

Children Eat Paris Green

ARLINGTON, Neb., May 21.—(Special.)—The three children of Henry Pfeiffer, a farmer living southeast of here, were badly poisoned by eating Paris green, which Mr. Pfeiffer had just bought that day to put on his potatoes, which were being injured by the bugs.

By the quick work of the family and speedy arrival of the doctor, the children were put out of danger.

District Court at Albion

ALBION, Neb., May 21.—(Special.)—District court convenes here next Monday, June 5, Judge Hollenbeck presiding. No criminal cases are on the docket and fewer civil cases than usual.

School Money Ready For Distribution

State Superintendent Crabtree Reports on Amounts Going to the Different Counties.

(From a Staff Correspondent.) LINCOLN, May 21.—(Special.)—The semi-annual apportionment of the temporary school fund of the state to be distributed among the ninety-two counties has been made by State Superintendent Crabtree. The funds are used for the support of schools in the counties to which they go, and are apportioned on the basis of the school population of the various counties, those included being all persons between the ages of 1 and 21 years. The division of the money by counties and the school population follows:

County	School Pop. 1-21	App. Fund
Adams	4,323	\$25,749.76
Audubon	288	1,809.28
Banner	288	1,809.28
Barnes	429	2,681.25
Bee	429	2,681.25
Benoise	1,492	9,327.46
Box Butte	1,492	9,327.46
Boyd	1,492	9,327.46
Brown	1,492	9,327.46
Buffalo	1,492	9,327.46
Burt	1,492	9,327.46
Butler	1,492	9,327.46
Cass	1,492	9,327.46
Cedar	1,492	9,327.46
Cheyenne	1,492	9,327.46
Cherry	1,492	9,327.46
Coffey	1,492	9,327.46
Cuming	1,492	9,327.46
Custer	1,492	9,327.46
Dallas	1,492	9,327.46
Dawson	1,492	9,327.46
Decatur	1,492	9,327.46
Dixon	1,492	9,327.46
Dodge	1,492	9,327.46
Dundy	1,492	9,327.46
Fillmore	1,492	9,327.46
Franklin	1,492	9,327.46
Frontier	1,492	9,327.46
Gardner	1,492	9,327.46
Gas	1,492	9,327.46
Garden	1,492	9,327.46
Garfield	1,492	9,327.46
Grant	1,492	9,327.46
Grant	1,492	9,327.46
Greely	1,492	9,327.46
Hall	1,492	9,327.46
Hamilton	1,492	9,327.46
Harrison	1,492	9,327.46
Harlan	1,492	9,327.46
Hitchcock	1,492	9,327.46
Holt	1,492	9,327.46
Hooker	1,492	9,327.46
Howard	1,492	9,327.46
Jefferson	1,492	9,327.46
Johnson	1,492	9,327.46
Kearney	1,492	9,327.46
Kearney	1,492	9,327.46
Keith	1,492	9,327.46
Kimball	1,492	9,327.46
Knox	1,492	9,327.46
Lancaster	1,492	9,327.46
Lincoln	1,492	9,327.46

Registration at University

Total Number of Students at Institution Reaches Total of Four Thousand Six Hundred.

(From a Staff Correspondent.) LINCOLN, May 21.—(Special.)—The last report of the university show that of the 4,623 students registered at the institution there are but registered from foreign countries and only 213 from other states and territories. The number of foreign students from other states many times in the past, but the registration from other states is higher. Those who enter here from foreign countries, it is thought by the school authorities, usually register from their homes, but in the case of students from other states many are thought to register from places in this state merely to avoid the payment of a \$10 fee required by all non-resident students.

Buckner Praised for Work in Big Trust Litigation

Secured Conviction of Dan O'Reilly, Laying Foundation for Trust Settlement.

(From a Staff Correspondent.) LINCOLN, May 21.—(Special.)—For his work in the Dan O'Reilly case in New York City, Emory Buckner, son of Rev. and Mrs. J. D. M. Buckner of University Place, is receiving much credit both from eminent legal authorities in that city and from the daily press. Buckner, who is a graduate of the State university and who, while a student here, was manager of the foot ball team, has been assistant district attorney of the federal service for some time past and in the O'Reilly case succeeded in securing a conviction of the defendant for various criminal practices.

Kate Shelby May Recover

Carroll, Ia., May Recover for Loss of Life Insurance Policy.

CARROLL, Ia., May 21.—Miss Kate Shelby, Iowa's famous heroine who saved the lives of the passengers of a North-western train near Boone, Ia., about twenty years ago by signaling the train in time to prevent a wreck, may recover from her present illness. Her physician said today that she showed much improvement.

Counterfeit Dollars

buy trouble, but a genuine quarter buys Dr. King's New Life Pills, for constipation, malaria and jaundice. For sale by Beaton Drug Co.

S.S.S. NATURE'S TONIC

The need of a tonic in the Spring is almost universally recognized. Bodily fatigue, sickle appetite, poor digestion, nervousness, lack of energy, etc., prove that the proper amount of nourishment is not being supplied to the body through the circulation. The stomach, bowels, and digestive members are sluggish from lack of stimulating nutrition, and in consequence the entire body suffers from the effects of a poorly nourished constitution. The use of a real blood-purifying tonic when the system is deranged from lack of nourishment, will often prevent the development of some serious sickness, because weak systems cannot resist disease, while healthy, well nourished constitutions are able to ward it off. No medicine is of value as a tonic except one which purifies and enriches the blood, for until this is done the body will not receive its required stimulus and disease-resisting powers. S. S. S. is the best Spring tonic because of its genuine ability and worth as a blood purifier. It builds up the depleted system in the true way, by purifying the blood and supplying an increased amount of nourishment to every portion of the body. S. S. S. removes all impurities from the circulation, and overcomes the unpleasant physical ailments of Spring. S. S. S. is for sale at drug stores. THE SWIFT SPECIFIC CO., ATLANTA, GA.

MUSLIN DRAWERS 15c
Regular 29c values.
Neatly made of good quality muslin.

CORSET COVERS FOR 15c
Well made of good materials. Embroidery and lace trimmed.

The **Novelty** SKIRT COMPANY
214-16 N. 16th STREET OPPOSITE HOTEL LOVAL

WHITE MUSLIN UNDERSKIRTS
Pretty new muslin undershirts. Dressy and comfortable. Wash and wear. Worth 12.98, on sale at 7.9c.

SILK PETTICOATS AT \$1.89
Regular \$4 values. Blacks and all colors. AT—\$1.89

GIGANTIC STOCK REDUCING SALE

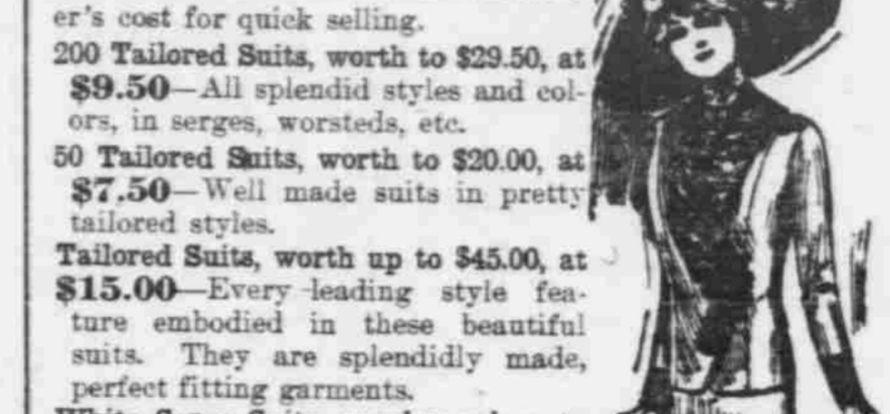
OVERSTOCKED—THAT'S THE REASON. WE OVER-ANTICIPATED OUR DEMANDS THIS SEASON. AS A CONSEQUENCE WE FIND OURSELVES WITH A TREMENDOUS STOCK OF WOMEN'S HIGH GRADE WEARING APPAREL THAT MUST BE DISPOSED OF AT ONCE TO MAKE ROOM FOR OUR REGULAR SUMMER STOCKS. WHEN YOU STOP TO THINK OF THE VAST AMOUNT OF MERCHANDISE IN THIS SALE, OUR ENTIRE IMMENSE STOCKS; WHEN YOU STOP TO THINK THAT YOU CAN BUY THESE FRESH, NEW, SEASONABLE GOODS AT SUCH TREMENDOUS PRICE REDUCTIONS—HALF PRICE AND LESS—YOU WILL CERTAINLY COME. REMEMBER THIS SALE COMMENCES TOMORROW MORNING ALL OVER THIS BIG, EXCLUSIVE LADIES' OUTFITTING STORE PROMPTLY AT EIGHT O'CLOCK. BETTER COME.

Remarkable Waist Sale



- \$1.00 Summer Waists at 39c**—Pretty white lingerie waists in a number of attractive styles; regular values to \$1.00; on sale at 39c
- \$2.00 Marquette Waists at 98c**—Beautiful new marquette waists, low neck and kimono sleeve effects, handsomely trimmed; on sale at 98c
- \$2.00 Embroidered Waists at 98c**—Dainty new embroidered waists, made with low neck and kimono sleeve effects; regular \$2.00 values; on sale at 98c
- \$1.50 Summer Waists at 69c**—An enormous assortment for your selection; high and Dutch necks, long and kimono sleeves; regular \$1.50 waists; on sale at 69c
- \$5.00 Pretty Silk Waists at \$2.48**

Tremendous Suit Values



- Every suit in the house has been marked down to actual manufacturer's cost for quick selling.
- 200 Tailored Suits, worth to \$29.50, at \$9.50**—All splendid styles and colors, in serges, worsteds, etc.
- 50 Tailored Suits, worth to \$20.00, at \$7.50**—Well made suits in pretty tailored styles.
- Tailored Suits, worth up to \$45.00, at \$15.00**—Every leading style feature embodied in these beautiful suits. They are splendidly made, perfect fitting garments.
- White Serge Suits, regular values to \$27.50, at \$12.50**—Splendid white serge suits; also white with black hairline stripe. Made in strictly tailored and handsomely trimmed effects.
- \$7.50 Linen Suits at \$2.98**—Short, jaunty jackets, gored or pleated skirts. These come in all sizes; in white, natural and all colors.

Summer Dresses at Slashing Price Reductions

- \$5.00 Summer Dresses at \$1.98**—Very pretty new light lawn and percale dresses, in scores of new styles, light and dark shades.
- \$5.00 Linen Coat Dresses at \$2.98**—Attractive linen dresses, low necks and kimono sleeves, lace trimmed, buttoned all the way down the front. Blues and tans.
- \$7.50 Lingerie Dresses at \$1.98**—An enormous assortment of pretty lingerie dresses in scores of pretty styles, all sizes. Actual values to \$7.50; going during this sale at \$1.98.
- Beautiful Lingerie Dresses at \$5.00**—Worth to \$15; made with high or Dutch necks, long or kimono sleeves. Beautiful all-over embroideries and lingerie.
- Summer Dresses, worth to \$7.98 at \$2.98**—Attractive new styles in plaids, checks, dotted foulards, etc. A tremendous assortment in all sizes and colors for your selection.
- \$20.00 Handsome Silk Dresses at \$6.98**—Beautiful messaline, foulard and taffeta silk dresses, in plain colors, stripes and fancies. All splendid new styles and colorings. Actual values to \$20.00—during this sale at \$6.98.

Muslin Underwear Sale

- 79c Muslin Gowns at 39c**
- \$1.00 Muslin Gowns at 49c**
- \$1.39 Muslin Gowns at 69c**
- \$1.45 Corset Covers at 69c**
- \$1.98 Muslin Gowns at 98c**
- 59c Corset Covers at 29c**
- \$1.00 Corset Covers at 49c**

Extraordinary Skirt Values

- \$8.00 Tailored Skirts at \$3.98**—Chiffon panamas, worsteds, serges, etc., in pleated and gored effects. Some are plain tailored, others handsomely embroidered.
- \$4.00 Panama Skirts at \$1.98**—For misses and little women. Blacks and all colors.
- \$10.00 Tailored Skirts at \$4.98**—Wiry black voiles, chiffon panamas, French and storm serges, fancy mixtures, etc. All sizes and colors.
- \$15.00 Handsome Skirts at \$7.98**—Best French Altman voiles, serges, poplins, worsteds, etc. A large assortment of beautiful new styles in plain and handsomely trimmed effects. Regular \$15.00 values; some worth even more; all go at \$7.98.

Splendid Coats for Summer Wear at One-Half and Less

- Tan Serge Coats, regular \$17.50 to \$27.50 values, \$9.50**—Also white and navy serge coats. Very handsome styles with pretty sailor collars, satin trimmed. All sizes for ladies and misses.
- Silk Pongee Coats, regular values at \$25.00, \$9.75**—Beautiful new pongee silk coats, in scores of pretty styles. Some in plain tailored effects. Others handsomely trimmed with wide shawl and sailor collars.
- Black Satin Coats at \$8.98**—Rich black satin coats, prettily trimmed, worth \$17.98; on sale at \$8.98.
- \$25.00 Black Satin Coats at \$12.50**
- Silk Finish Rep Coats, regular values to \$12.50, \$4.98**—Made with the pretty sailor and shawl collars, trimmed with satin and embroidery.

Made to Measure Skirts, Suits, Coats and Dresses at Reduced Prices

Our large stock of dress goods must be reduced at once. Hence such low prices. Every garment guaranteed to be perfect in fit, quality and superb man tailoring.

Tailored Skirts, Made to Measure, \$3.98—Complete for the making and the materials.

Tailored Suits, Made to Measure, up from \$20.00
Pongee and black satin Coats, made to measure at reduced prices.

Visit our tailoring shops on the premises, and see how we make such splendid garments.

WHITE APRONS FOR 29c Worth 50c. Hemstitched, embroidered and fancy ruffled, with pretty little side pockets.	HOUSE DRESSES Neatly made house dresses, in high and low neck effects. Light and dark wash materials. Regular \$1.50 dresses, on sale, at 75c	CORSETS Good make corsets, in all sizes. Regular 75c values, on sale, at 39c.	LINEN SKIRTS Splendid white linen wash skirts, in scores of new pretty styles. All sizes. Regular values to \$12.48, on sale, at 68c	LAWN KIMOMOS Cool, dainty long Lawn Kimonos, in a beautiful assortment of pretty colors. Belted effects. Regular \$1.79 values, at each 79c	DRESSING SACS Dainty Lawn Sacs, with full kimono sleeves. Light and dark shades. Regular 29c values, at each 15c	MESSALINE PETTICOATS Splendid Silk Messaline Petticoats, in blacks, whites, stripes and all colors. Regular 95c values; on sale at 69c	HEATHERBLOOM PETTICOATS Regular \$1.50 black and colored petticoats on sale at 69c
--	---	---	--	---	--	--	--

The **Novelty** SKIRT COMPANY
214-16 N. 16th STREET OPPOSITE HOTEL LOVAL

SILK KIMONOS. MADE TO MEASURE SKIRTS.
Beautiful Silk Kimonos in pretty floral patterns at Half Price.
Eight pretty styles to select from, in panamas and worsteds, at \$3.98

MAIL ORDERS WILL BE FILLED SAME DAY RECEIVED. MONEY REFUNDED IF ANY PURCHASE IS NOT SATISFACTORY.