

See "Dundee"

"Happy Hollow" and Fairacres

Ask a busy man if he knows Dundee, and he will say: "Certainly, I've been there many a time; it's a beautiful suburb to live in." He says THAT because he KNOWS it to be TRUE; but chances are, he has "been so busy lately," that he hasn't had a chance to see Dundee in quite a while.

THAT'S the man this announcement is aimed at. HE should visit Dundee—Happy Hollow—Fairacres—HE should have it brought to him forcibly that "country air" is more exhilarating than city air; HE should see where so MANY lots were sold YESTERDAY; HE should know that it is only a question of time, but that the city business man will live in a "country home" anyway; HE should see the MANY advances Dundee has made since last HE was OUT there!

No Omaha city taxes to pay in Dundee.

You do not have to build unless you wish to.



Buy in Bonnie Dundee!

Elmwood Park—208 beautiful acres—in the immediate vicinity.

Those who will build will be required to conform to reasonable building restrictions.

See Us Tomorrow

and arrange for the purchase of a Dundee lot on terms admittedly easy

1-Tenth Down

and one per cent of purchase price each month

It takes but twenty minutes to get to Dundee from 16th and Farnam Sts. The cars run on an "eight minute" schedule. Take a West Farnam-Dundee car anywhere and ride out to the entrance of the Happy Hollow Country Club; then a trifle of a walk—one block east—brings you to the lots we have for sale. We don't transact any business Sunday, but you may make a memorandum of the lot and block number of any lot that may appeal to your fancy. This lot and block number will be found on a white stake set in the midst of each lot; the same stake will also carry a notice in case the lot should have been sold. If interested communicate with

George & Company,

Agents, 9th Floor

City National Bank Bldg.

Free Concerts for Contestants

Free concerts will be given at the A. Hospe store, 1513 Douglas street, and at the Columbia Phonograph agency, 1311-13 Farnam street, Monday afternoon for contestants in The Bee's Booklovers' game. At the Hospe store the 88-note Kimball Player Piano, which will be given away as the second prize in the contest, will play for the visitors from 2 to 2:50 o'clock. The Columbia Grafonola "Regent," fourth prize, will play in concert at the Columbia agency from 3 to 3:50 o'clock.

All persons who are contestants for the prizes in The Bee game are urged to attend these concerts. Those people who have not entered the contest yet are also invited to hear both the Player Piano and the Grafonola.

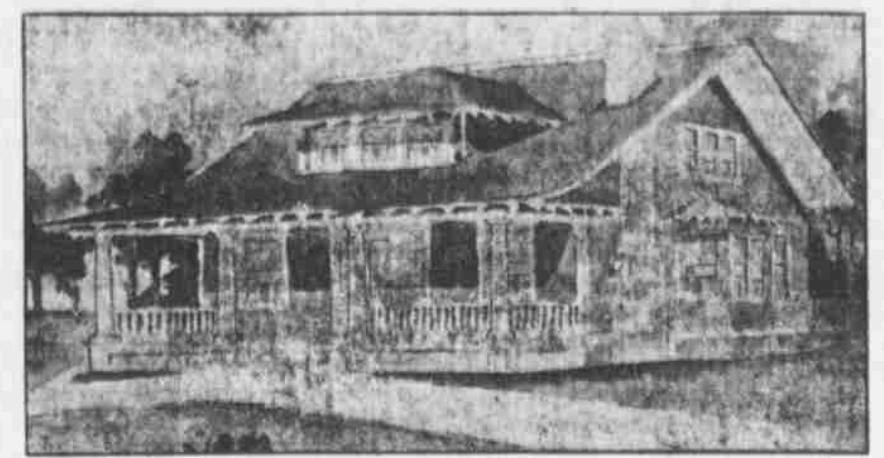
Land Bureau

Learn Where It's Best to Farm

Thinking about buying land? Want to know the soil and climate best suited for certain farming? Our Land Bureau gives free information about soil, climate, conditions in all parts of the country. We have gathered data and can tell you what you desire to learn. Write the Land Information Bureau, The Twentieth Century Farmer, Omaha, Neb., today and your questions will get prompt attention.

Free Information

Comparative Cost of Materials



(Continued from Page Two.)

MR. CLAUSEN'S BOOK

"The Art, Science and Sentiment of Homebuilding." 30 chapters, 300 illustrations. It covers a wide range of subjects, including the planning of bungalows, suburban and city homes, costing from \$2,000 to \$20,000, letting contracts, choosing materials, proper design of entrance, windows, fireplaces, etc. New third edition. Price, postpaid, \$1.00. Address, Arthur C. Clausen, Architect, 1136-37-38 Lumber Exchange, Minneapolis, Minnesota.

Improved methods may prove to have overcome the defects. Stucco on hollow tile and brick veneer are both very good forms of construction and will outlast clapboards and shingle by many years. The most permanent form of construction is the solid brick wall.

White a brick walled house it is seen costs a little more than 10 per cent at the start, this additional cost is made up in saving of heat, insurance and repairs in about twelve years, and the saving on these items in the course of fifty years as compared with a frame house has been found will amount to the original cost of the frame house in the first place, so that it can be easily seen from this, that taking into consideration the small additional expense, that it pays to build well.

The following items for exterior and interior building materials will be listed, in the order of their cost, the lowest coming first:

Roofs—(1) Composition roofings, (2) shingles unshaded, (3) shingles dipped and brushed in stain, (4) slate, (5) tile.

Cost of Foundation—(1) Concrete, provided that sand and gravel is conveniently obtained; (2) rubbed stone, provided that it is conveniently obtained; (3) brick.

Porch Floors—(1) Board construction with white pine or fir floor; (2) concrete with cement surface or tamped sand (not advised owing to settlement); (3) reinforced concrete with cement surface; (4) reinforced concrete with ceramic tile surface.

Dimension Lumber—In most parts of the country (1) hemlock, (2) hard pine, (3) white pine; in some parts of the country redwood and fir are used, both costing less than white pine.

Flooring—(1) Common hard pine, (2) Georgia pine, (3) fir, (4) unselected birch,

(5) selected red birch, (6) unselected maple, (7) maple selected white, (8) straight grained red oak, (9) one-quarter sawed red oak, (10) straight grained white oak, (11) one-quarter sawed white oak.

Wall Plaster—(1) On common lath, (2) on various kinds of plaster boards, (3) on metal lath. There is little difference in the expense between rough or sanded plaster and a smooth putty coat surface.

Interior Wood Finishes—In most localities, (1) Georgia pine, (2) yellow pine, (3) fir, (4) unselected birch, (5) white pine, (6) selected birch, (7) unselected straight grained red oak, (8) selected straight grained red oak, (9) selected one-quarter sawed red oak followed by the same grading as above in white oak. The more expensive woods vary considerably with different mills in different localities; (1) bird's-eye maple, (2) several grades of mahogany and crotchwood walnut, in some parts of the country cypress and redwood are used extensively, and where conveniently obtained, are of low cost.

TIMELY REAL ESTATE GOSSIP

Several Big Firms Announce Suburban Lots During Week.

MANY PURCHASERS ON GROUND

General Movement is Started Toward the Outskirting Acres by Those Who Are Seeking Modest Homes.

The movement toward suburban acres and lots was never so pronounced in Omaha as during the week just ended. Many large real estate firms which are promoting outskirting property came forth during the last few days with luring propositions, and hundreds of persons, many of whom became buyers, traveled to the far ends of the street car lines to look over choice lots for cottages and acres for chicken ranches.

Probably the most important movement suburbanward was inaugurated during the week by George & Co., agents for most of the vacant property in Dundee, Happy Hollow and Fair Acres. A systematic advertising campaign was launched yesterday was set as the opening day for the reception of prospective buyers in those choice districts.

During the day many inspected these districts, and the agents report a satisfactory number of buyers. The lots are offered on the easy payment plan, affording the person with a small amount of capital and considerable energy to establish a home.

Another important announcement was made during the week when the Byron Reed company began pushing what are known as Elmwood Acres, situated near Elmwood park. The tract contains twenty acres, and the plot is now before the county commissioners for approval.

The property is being sold in acre and one-half acre parcels for prices ranging from \$500 to \$200. "We have had more inquiries lately for acres than for any other kind of property," says Mr. Reed. "It is human nature to want to get away from the toil of the city, where children and chickens grow healthy and where there is plenty of fresh air."

Hastings & Hayden, who platted twenty acres in Florence, and sold all but three of the lots within two weeks, have announced that they will soon place a new addition on the market. The tract, which is divided into sixty lots, is located on the boulevard between Military avenue and Fontaine park.

A name has not yet been selected for the new addition, that being left to the purchasers of the lots, to whom will be offered a prize for the most desirable name. The lots are forty-five feet wide and are from 125 to 150 feet deep. The addition is located within two blocks of either the Benson or the Deaf Institute street car lines.

A campaign to raise part of \$5,000 necessary to build a new and larger place of worship for the congregation of St. Peter's parish will be started soon by Father P. A. McGoey. The campaign will last throughout the summer months, during which time it is expected \$5,000 will be raised. This, with \$5,000 due from the estate of the late Joseph A. Connor, will be sufficient to build the church, which will be located at Twenty-eighth and Leavenworth streets, on the ground now partly occupied by the present church. Two years will have elapsed before actual building operations are started.

Excavations were started last week for a modern cottage for Louis E. Hurt, a railway mail service employee, who was married recently. The cottage will be erected on Seward street, facing south, west of Military avenue. It will cost \$2,000 and will be ready for occupancy about July 1. The cottage is being built by Payne & Slater.

A street railway transforming station is to be built in South Omaha at a cost of \$200,000, and the contract has been awarded to B. J. Jones. The building will be situated on the third lot south of the city hall, where grading has already begun. The foundation will be of concrete, and the main structure of brick and steel. The dimensions will be 40 by 60, one story high. High power currents will be transmitted from the power station and conformed to the proper current to propel street cars.

CAPITAL REMOVALISTS HAPPY

Kearney Man Declares Western Part of State is Satisfied.

SOME PROGRESS ALREADY MADE

Defeat of Appropriation for State Historical Society's Buildings is Considered Step Toward an Ultimate Victory.

"The capital removal enthusiasts were perfectly satisfied with the work we did during the last legislature," said Willard P. Bailey of Kearney, author of the two removal bills and member from Buffalo county. Mr. Bailey was in Omaha Saturday buying office supplies.

"When we came to the legislature at the first of the year we never thought of doing anything but defeating the appropriation for the State Historical society buildings. The society wanted to get enough money to finish the building already started and the secretary, C. S. Calne, sent around letters saying that if that appropriation could be secured the capital removal question would be dead for years to come. We succeeded in stopping that expenditure of money and we had never hoped to get a removal bill actually through.

"Kearney and Grand Island, the two towns most interested, have entered into an agreement through the Commercial clubs to work together for removal, and it will take a long campaign of state-wide activity to acquaint the people with the advantages of having a centrally located capital and a new wholesale and railroad center for the western part of the state. Kearney is now getting promises from the Burlington for new connections and the branch called the 'Kearney & Beloit,' a small railroad down into Kansas, may be connected up with the Santa Fe. If that happens we will have exceptionally good railroad facilities. As far as rivalry between Grand Island and Kearney is concerned, I think both towns realize that they will never be great cities unless they get something like the capital to boost their chances and that the location of the capital in either would not retard the other from being as great as it would have been if the capital had remained in Lincoln."

Mr. Bailey is proud of his recently acquired distinction as a member of the "veto club." He was the author of the real estate license bill, upon which the governor put his disapproval.

Here's a New Book and Climatic Map of the United States Free.

Nearly everyone has had his troubles with paint—with its cracking, chalking, peeling or blistering. A brand of paint that would seem all right at one time, or place, would prove woefully faulty at another. Even the makers have been at their wits' end to understand it.

You know "this is a big country." Did you ever appreciate just how big? In this country—in different sections—people are overcome by the heat, while others are frozen, at the same time—on the same day. The United States does not have "a climate." Such a country with its extremes of temperature, its giant water line hugged by two oceans, its vast inland stretches—could not have "a climate."

There are four climates in the United States and therein lies the secret of the past imperfections of all paints. For paint must be made to fit the climate in which it is to be used.

And you can now get paint made on the correct scientific basis to exactly suit the climate in which you live. Lincoln Climatic Paint is made from four patented formulas, each to suit the four climates of this country, as fully explained in the free book and climatic map of the United States which will gladly be sent you postage paid and free, if you write by postal letter and say that you are a reader of this paper. Address: Lincoln Paint and Color Co., Dept. 608, Lincoln, Neb.

This is the first climatic map of the United States ever published and the first and only climatic paint ever made. You will find the story of the discovery of the facts told in this book most valuable to you as a paint user and most interesting to write today.

Fearful Slaughter

of deadly microbes occurs when throat and lung diseases are treated with Dr. King's New Discovery. 50c and \$1. For sale by Boston Drug Co.

HIGH-ART CLOTHING

THE tailor takes his styles from stiff-as-a-poker, grim-as-a-stoker fashion-plates. The makers of "HIGH-ART" Clothes ransack the fashion and fabric centres of the world to get the new and true styles—those which the "dandies" of two Continents endorse.

WHEN you put on a "HIGH-ART" Suit, you may be certain that the most authentic style has been put in. Every model reflects "life as it is lived" in the centres of leisure and luxury.

We take the purest hand-picked wool and, then, hand-tailor it into garments, which are the ultimate of good form and the superlative of good taste.

Apply for "HIGH-ART" Clothes at your dealer's and make sure that you are supplied with the genuine by looking for the label in the breast-pocket of the coat. A booklet of Spring and Summer Fashions is yours for a simple postcard request. Just address

STROUSE & BROS.

BALTIMORE, M. D.

PALACE CLOTHING CO., Cor. 14th and Douglas Sts., Omaha.

OMAHA AGENTS PALACE CLOTHING CO.

Corner 14th and Douglas Streets

Doesn't Blow Out

No danger of our Country Cousin failing to respond to breakfast call in the morning.

Equally safe where there are children in the home.

Omaha Electric Light & Power Co.

How to Forget a Corn

A Blue-jay plaster is applied in a moment. Then the pain of the corn stops instantly. Then the bit of red B & B wax gently loosens the corn, and in two days it comes out.

The plaster is snug and comfortable, and one simply forgets the corn. In 48 hours one is rid of it. No soreness, no pain, no inconvenience. Do you wonder that most people now use Blue-jay? Five million corns are removed by them every year. Please try them on yours.

See the Picture

A is the harmless red B & B wax which loosens the corn.
B is soft felt to protect the corn and keep the wax from spreading.
C is the comfortable narrow band which goes around the toe.
D is rubber adhesive. It fastens the plaster on.

Blue-jay Corn Plasters

At All Druggists 15c and 25c per Package
Sample Mailed Free. Also Blue-jay Bunion Plasters.
Bauer & Black, Chicago & New York. Makers of Surgical Dressings, etc.

MANDO

Remove superfluous hair from any part of the body. The only safe and reliable depilatory known. Large bottles \$1.00 sample free. Send for booklet free.

Madame Josephine Le Fevre,
1250 Chestnut St., Philadelphia, Pa.

Sold by Meyer-Dixon Drug Co., Boston Drug Co., the Best Drug Co., Haines Drug Co., Shaker Drug Co., Council Bluffs, Iowa.

ARE YOU GOING TO BUY LAND? No farmer should think of buying a home before seeing a copy of our journal. It has lands, city property and stocks of goods advertised in it from every state in the Union, so that you can find just what you wish in its columns. It reaches 65,000 readers each issue. Advertising rates, 2c per word. Send 10c for 3 months trial subscription. It will be stopped at the end of 3 months unless you renew. 125 Journal, Trass, Iowa.

SCHOOLS AND COLLEGES.

Rockford College

189-201 For Women Rejected. Rockford College is the only College for women in the Middle West, which has been accorded the First Rank in scholarship by the Commissioner of Education. Send for Catalog to Box 66 JULIA H. CULLIVER, Ph. D., LL. B., President