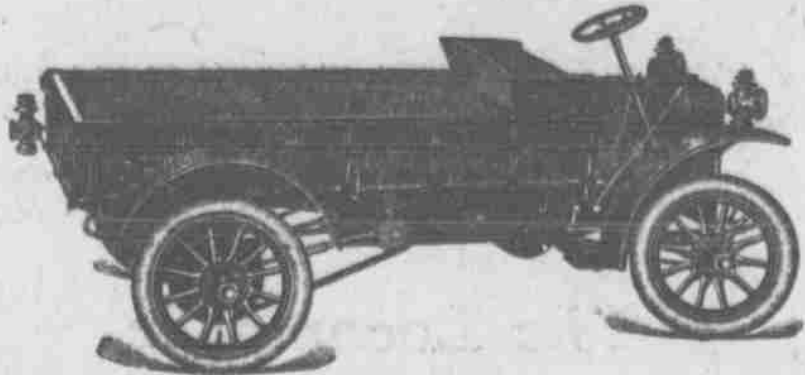


# Buick Pleasure Cars

Are on the Main Floor—right in front as you enter the Auditorium.

## Buick Trucks

Are also on exhibition with the balance of the trucks in the Basement



MORE BUICK TRUCKS running in Omaha and Lincoln than any other make. Ask the firms using them and they will tell you it's the best truck you can buy for the money. Three styles at our exhibit. Prices \$1,000, \$1,075 and \$1,200.

### Nebraska Buick Auto Co.,

LINCOLN W. E. Sidles, Gen. Mgr. OMAHA Les Huff, Mgr. SIOUX CITY S. C. Douglas, Mgr.

### Along Auto Row

(Continued from Page Eleven.)

heart or a faithful soul this car certainly must have. Every day for three years this Mitchell car was driven 14 miles between Moline and Lons Pine, and, although more often than not it was loaded with passengers and baggage far beyond its normal capacity. Hay declares no one ever had to wait a mile on account of the car failing to do business.

This is all the more remarkable, it is agreed by everyone conversant with the career and daily grind of this faithful Mitchell car, because the route it had to travel is sandy and rocky and means a more primitive road, with hardly 100 yards of good going.

Despite the automobile show regarding the possible number of sales to be made during the week has recalled the remarkable record made by the Rambler people at the Chicago show this year, when 181 Rambler cars were sold in seven days at an average price of \$2,500 each, making a grand total of nearly half a million, or \$457,500. This concern has held the record for show sales for three successive years. Last year 175 cars were sold at an average price of \$2,000 each, and the year previous the Rambler sales total was 150 at an average price of \$1,900 apiece.

A representative of one of the most prominent automobile factories, who is in Omaha for the show, spoke about the excellence of the music furnished by the orchestra. When told that the musicians were nearly all under twenty-one years of age, and that they were all minor people, he could hardly believe it. Here is to the orchestra, the musicians, and the foresight of the show management.

Notwithstanding the marvelous growth in the manufacture of gasoline motor cars there is no power in the world that is more efficient than steam.

A steam car is considerably more simple than a gasoline car. There is no explosion at the head of the cylinder, but in its place a cushioned elastic force which acts on the piston during its entire stroke. There is no reaction on springs to overcome. Then, instead of four oscillations to one impulse at the head of the cylinder, the steam engine is so perfected that the steam pushes the cylinder down and then pushes it back. It is an elastic, positive, even power from which there is practically no reaction.

By adding another cylinder on a quartered crank the position known as dead center is entirely eliminated. Further, there is no cranking to a steam engine. One simply turns on the steam, which, in the White steamer, is accomplished by a throttle wheel affixed within the steering wheel. It is not necessary to disconnect the engine from the vehicle, as no initial impulse or cranking is needed.

The fact that it is unnecessary that a steam engine be running at normal speed before the load is applied has entirely eliminated clutch problems. Then, too, the whole subject of transmission and shift gears can be neglected because the only operation necessary to obtain higher speed is to open the throttle. The fact that speed is entirely controlled by the throttle, and cures such results that no car in the world is so flexible and so quickly adapted to every possible road condition.

### Motor Patrol Makes for Better Service

Cost of Runs is Reduced and More Calls Can Be Made Per Month.

The adoption by the police departments of numerous cities of motor patrol wagons has led to compilations of statistics regarding the comparative costs of horse-drawn and motor patrols. Deputy Commissioner of Public Safety S. T. Friedrich of Syracuse, N. Y., has furnished figures, carefully kept for the old horse-drawn wagon, an electric wagon and an up-to-date motor patrol.

According to the figures up to a recent date the patrol has effected an economy of 27 1/2 per cent per month, makes calls 25 per cent cheaper than did the old horse-drawn vehicle and also makes 10 1/2 per cent more calls per month. The average cost per month for the horse-drawn patrol was \$41.54. The motor patrol costs but \$28.54 and this includes cost for repairs, one repair bill being caused by another car running into the side of the patrol at a street corner.

The horse-drawn vehicle made on an average 33 calls in one month while the motor patrol averages 34. The former cost per call \$1.23, the present cost is 74 cents. The motor patrol averages twenty-five miles per day. The average for the horse-drawn patrol was not kept as the wagon was not equipped with a speedometer.

The speed of the car and the quickness with which it can be started from the garage at police headquarters have greatly increased the efficiency of the police department in running down criminals and in being quickly on the scene at times of disorder.

On one occasion the police received a telephone report that a man was attempting to dispose of a bicycle at a saloon bar, a mile from headquarters. At that time a line series of bicycle thieves had greatly annoyed the citizens and the police were doing everything to catch the thief. As soon as the call was received the motor was cranked, a detective jumped into the car and before the man could complete the sale of the bicycle at the saloon the detective was there and had both the man and the stolen wheel. On its run the car went a distance of half a mile or more through the streets of heaviest traffic and made three turns on the way.

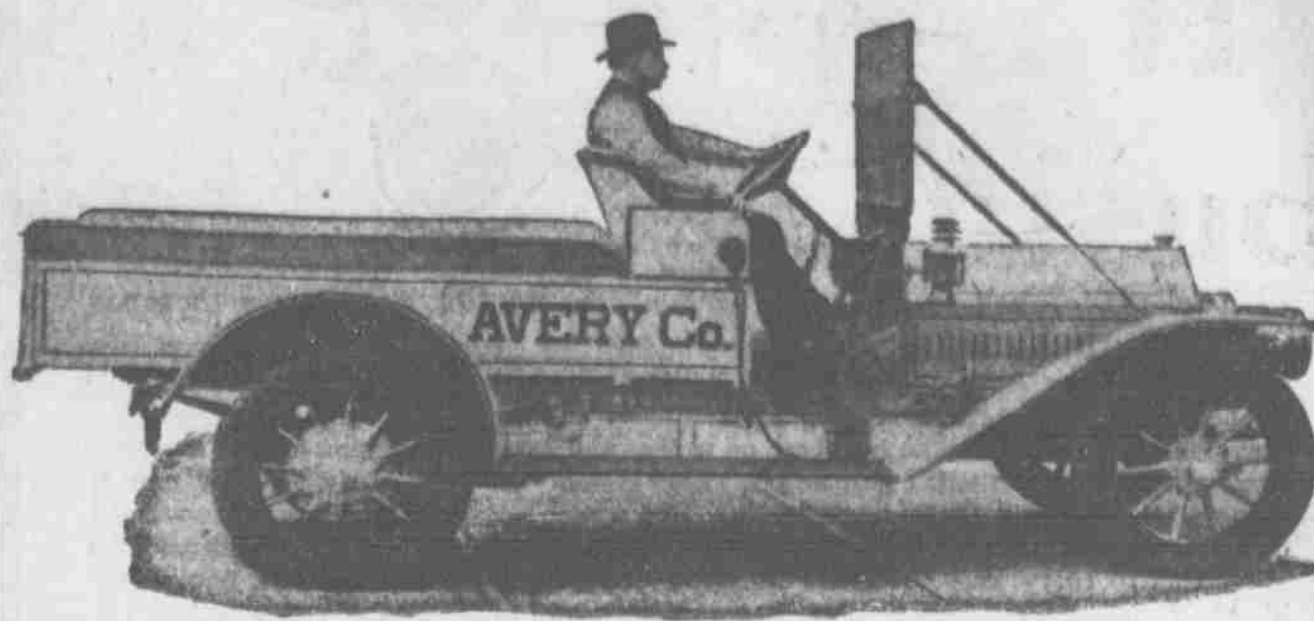
### THREE WHEELED AUTO SHOWN Car Like That Used by Deposed King of Portugal Displayed by Brands.

An automobile on three wheels, the kind that European royalty rides in, is on display in the Pompeian room of the Strand store.

This machine, the "Cyclon," is the property of Arthur D. Brandeis, who imported it from Berlin. This is the first machine of that type to be brought into the country. Many of the motor car experts of the Automobile show are inspecting the Cyclon daily.

The Cyclon is a combination of motorcycle and automobile and it will hold just two people. It has three wheels and is built on the tricycle principle. This car is the exact duplicate of the favorite car owned by Manuel, the deposed king of Portugal, and he used it almost occasionally while in Paris. It is also used extensively by royalty in other countries. It has a five-horse power motor. It will be on display for a week or more.

## Avery Auto Delivery Cars Beat Horse Delivery Wagons



THEY BEAT by reducing the delivery expense per package—much making much prompter deliveries possible—by being able to work any number of hours overtime during rush seasons—by requiring less care and storage room.

AUTO DELIVERY IS A PROVEN SUCCESS. It's only the question of getting the right kind of delivery car. The Avery Delivery Car will do your work right. It has the power, 45 H. P., 4 cylinder motor. It will climb the hills—it has the strength. Heavier and wider faced gears, larger driving shaft, Timken roller bearings; driving parts housed dust-proof and run in oil.

INVESTIGATE AUTO DELIVERY WITH AN AVERY.

### Johnson - Danforth Co., Special Agents

S. W. Corner 10th and Jones Sts., Omaha, Neb.

# REPUBLIC TIRES ARE BETTER

## STAGGARD Tread Republic TIRES DO NOT SKID

Specify Them on Your New Car.

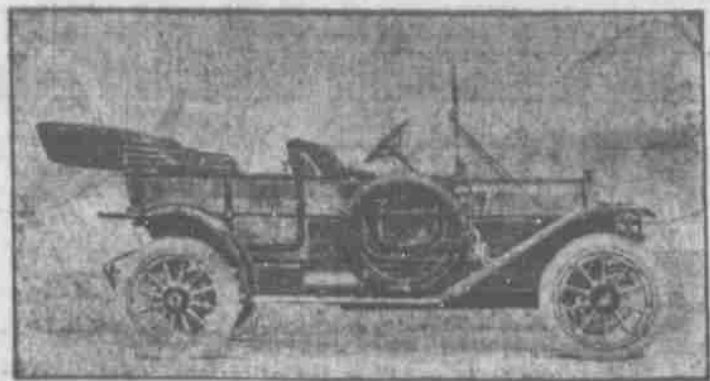
## THE BAUM IRON CO.

Distributors

Republic Rubber Co., Youngstown, Ohio.

## Vette MOTOR CARS

OUR EXHIBIT AT THE A. U. C. & F. O. W. IS DIRECTLY TO THE LEFT OF MAIN ENTRANCE

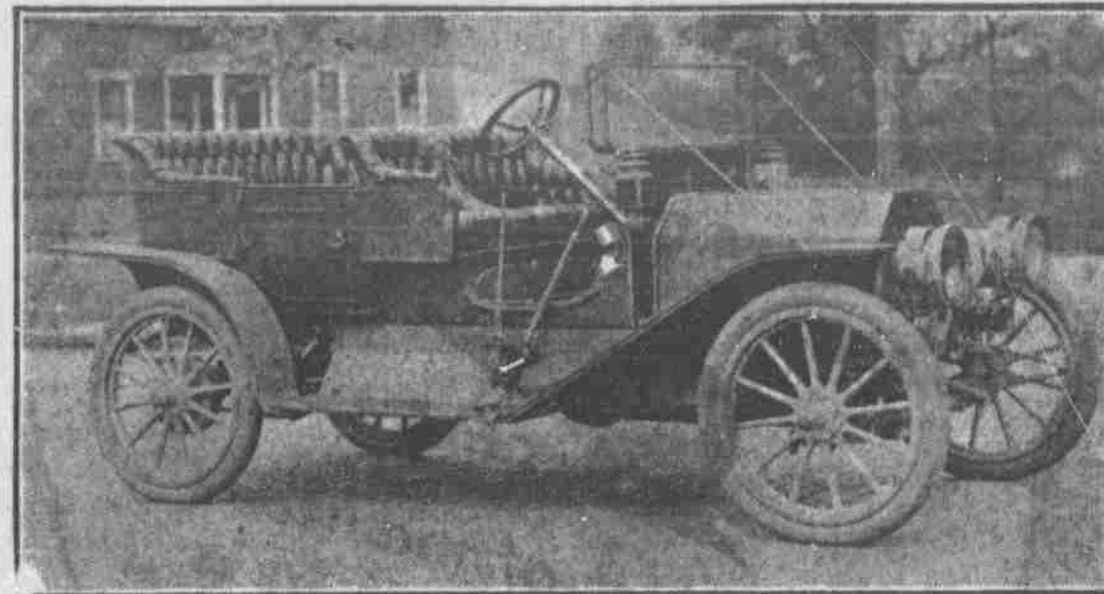


NOTE—The doors can be entirely removed when warm weather makes the enclosed front seat too hot to be comfortable. Body interchangeable with Laundlet or Limousine.

JOHN DEERE PLOW CO. DISTRIBUTORS OMAHA

CITY SALES ROOM, 19th & FARNAM STS.

### See this splendid car at the Show— There is nothing else in the Auditorium like it!



We will demonstrate during the day what this car will do. You should know more of it.

SPECIFICATIONS:	
Axle (Front)	Single piece, I beam, drop forgings.
Axle (Rear)	Semi-floating type, roller bearings.
Bearings	Front wheels, roller bearings.
Brakes	Contracting brake on drive shaft, and internal expanding in rear hubs.
Body	Metal.
Carburetor	Float feed type.
Control	Spark and throttle levers at steering wheel and foot accelerator pedal. Clutch operated by foot pedal. Service brake operated by foot pedal. Emergency brake operated by hand lever.
Clutch	Cone type, leather faced.
Drive	Bevel gear, shaft driven, shaft in tube.
Equipment (Regular)	2 oil side lamps, 2 gas lamps and generator. 1 oil rear lamp, horn, tools.
Equipment (On Special Order)	Top glass wind shield, Speedometer.
Colors	22-30. Primrose yellow running gear, dark blue body.
Frame	Wood sills, reinforced with steel, strongly braced.
Motor	4 cylinders, 4 bore, 4" stroke; cylinders cast in pairs; water cooled; tubular radiator, centrifugal pump, gear driven, and 16" aluminum fan.
Ignition	Dual system, magneto and dry batteries. (Motor) circulating splash system, oil forced into crank case by means of plunger pump.
Lubrication	Full-elliptic front and rear. Worm and segment (irreversible), 18" steering wheel.
Spring	55"
Steering Gear	24x34" (4" furnished on special order.)
Tread	Selective—three speeds forward and reverse with "H" slot.
Transmission	110.
Wheel Base	

### INTERNATIONAL HARVESTER CO. Omaha

B. L. REES, Manager.

## BOOTH RIMS

### Are Real Demountable

## Labor Saving Rims

3 Turns of 3 Screws Takes It Off---Do It Again and It's On ---Try It Yourself in Our Exhibit

## The Baum Iron Company

Distributors for

Booth Demountable Rim Co., Cleveland, Ohio.