

WANTS FACTORIES

SIX FACTORIES have been located in this thriving town in six months. In every instance The Murray Commercial Club was instrumental in their establishment.

WE WANT YOU to come and join us. Salt Lake City, population 100,000, is but 20 minutes away by superb trolley service. Smelters, canning factories, great clay works, making the most splendid qualities of building and ornamental brick, make for 3 undoubted advantages.

OTHER FACTORIES will find here an excellent labor market; the community of interest of other factories already here, and the advantages that three trans-continental railways give at all times to united effort or concerted pressure. The man in a one factory town is in an

unfortunate position; Murray, Utah, has more than a half dozen RIGHT NOW. This is the place for your branch factory in the west; the place for your individual effort if you are coming west.

FARMERS MAKE MORE MONEY because the factory town always pays a slighter higher price for farm and garden produce than any other. Hundreds of men are employed at Murray. There are EIGHT HUNDRED MEN EMPLOYED AT ONE WORKS ALONE. You can sell your produce direct to these men. And the place for you, if you are bound west, is at Murray, Utah. The lands are rich, and reasonable in price.

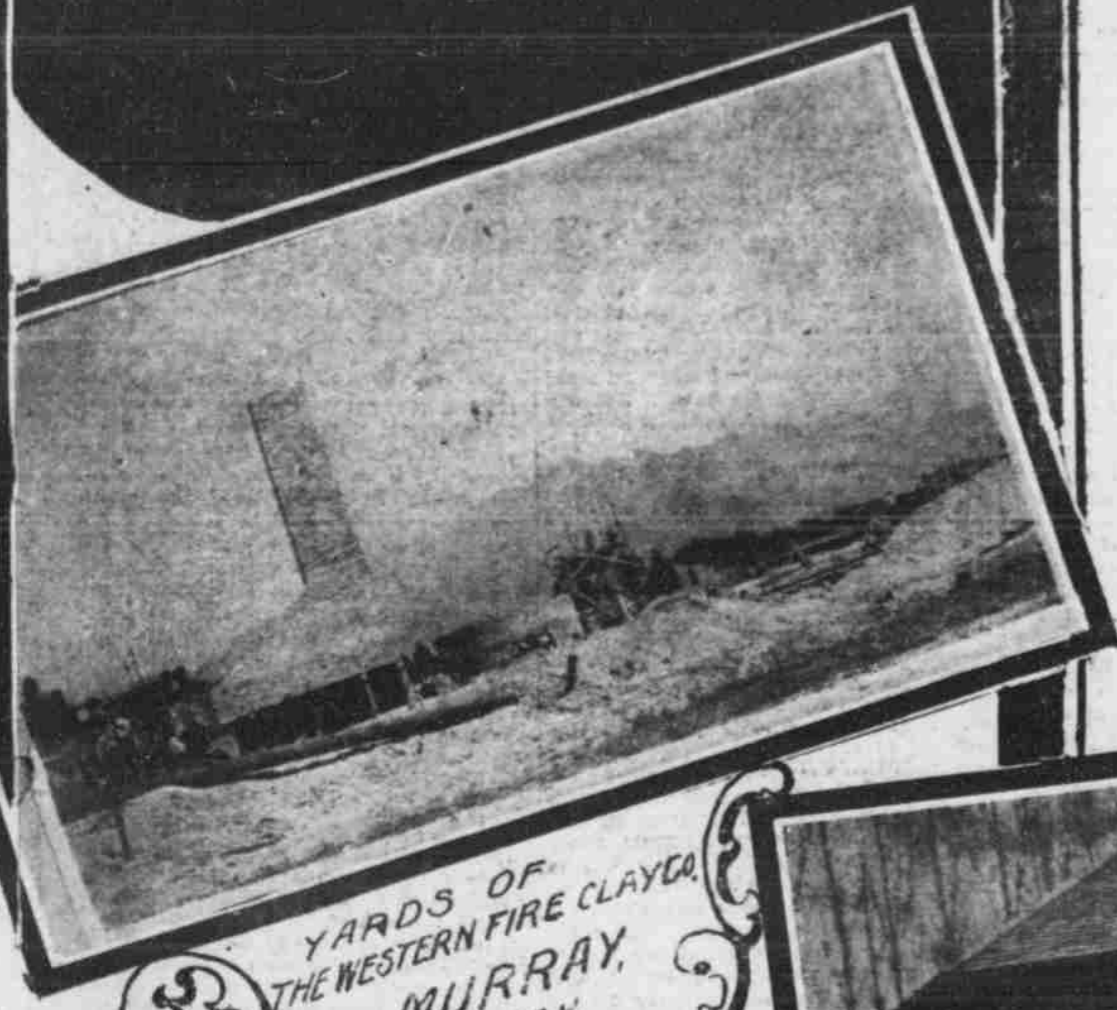
INVESTORS ARE SURE because the town is growing; money commands 7 per cent net; the city

and surrounding real estate is enhancing in value every single day and the man who follows the advice of an American states man who advised his sons to put their money in "small but growing towns" can NOT make a mistake.

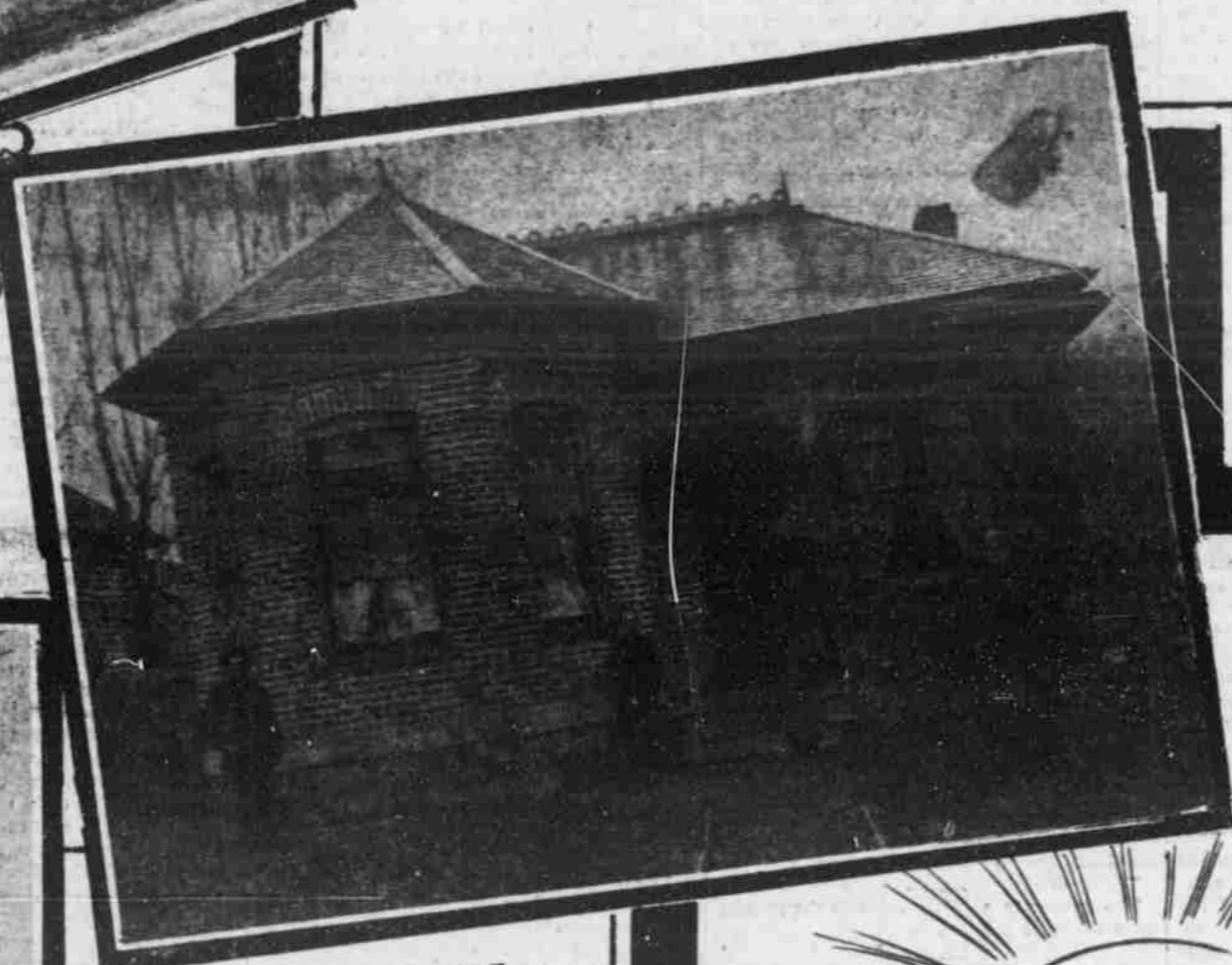
The Murray Commercial Club of Murray, Utah, located in its own home, with a membership embracing every LIVE WIRE business man in town, was organized for the purpose of assisting factories to locate here. A tin can factory is the next on the list.

WHAT ABOUT YOU? Write us about yourself today. Put up your proposition to us "slick and clean." If it's reasonable we will "show you" no matter from what county in Missouri you come. That's our business; to "show you." Write today:

The Murray Commercial Club Murray, Utah



YARDS OF THE WESTERN FIRE CLAY CO. MURRAY, UTAH.



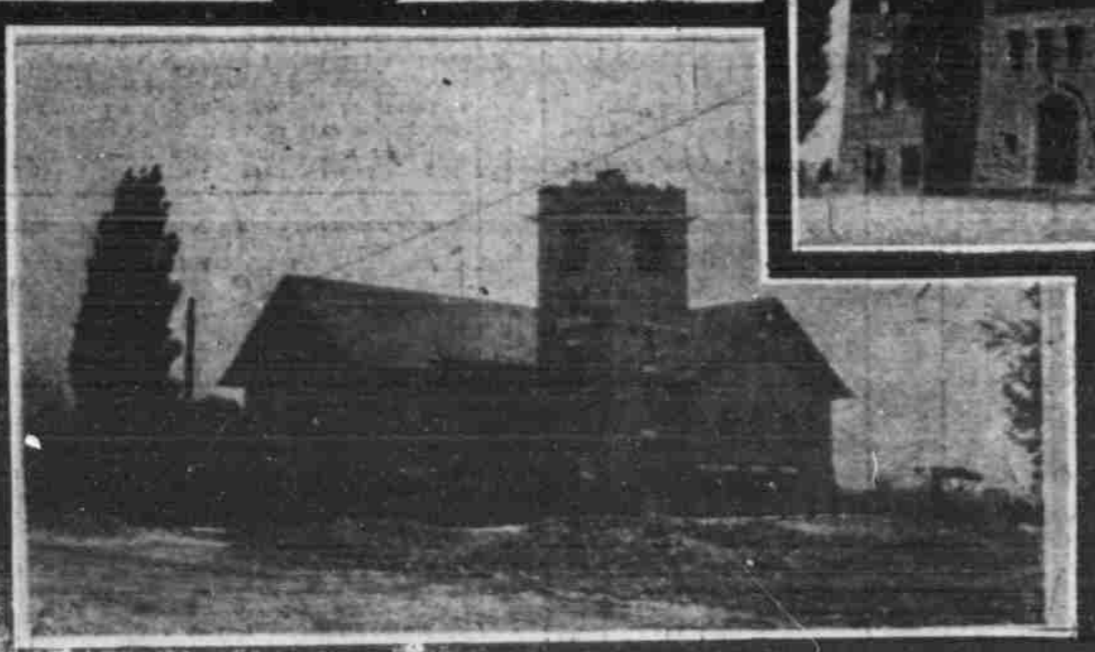
RESIDENCE OF HYRUM NEILSEN NEAR MURRAY, UTAH.



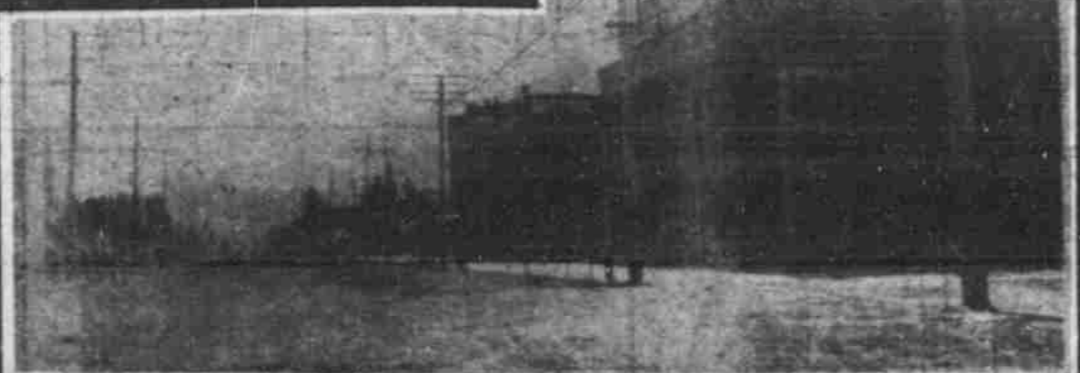
CITY HALL MURRAY, UTAH.



ARLINGTON SCHOOL, ONE OF THE FINEST MURRAY, UTAH.



FIRST WARD L.D.S. CHAPEL MURRAY, UTAH



STREET SCENE FROM CORNER OF MILLER-CARROLL MURRAY, UTAH

