



Automobiles



AUTO RACES ARE POSTPONED

Rain Makes Change Necessary in the Plans of Speeders.

RUN MONDAY IF SUN SHINES

Track All in Readiness Saturday, but Was Spoiled by Shower—Big Cars Waiting for Chance.

Saturday afternoon's rain played havoc with the plans of the Omaha Motor Speedway company for their big race meet which had been scheduled for Sunday and Monday. The rain of Saturday had already made it certain that Sunday's races will not be run unless the sun gets busy with a vengeance this morning. It is more than probable that the Labor day races as well will have to be postponed. In the event that Sunday furnishes plenty of sunshine the races scheduled for Labor day will be held. If the weather is not such as to put the track in shape again, however, the whole meet will be postponed, probably for two weeks.

The track was worked down under the grass and scrapers until prior to the rain it was in good, fast shape, the work on the stands, fences, gates and the like has been completed, and Omaha's newest race course is a really attractive place.

All the officials for the meet have not yet been definitely chosen, but it is known that Otto P. Nestman and George Rogers will act as referees. Frank Parmelee will be one of the timers.

Mr. Nestman will not enter any of the races, but, driving Fred Hamilton's big six-cylinder Stephens-Duryea, he has promised to establish some speedy track records in the runs which he will make against time. At the speeding business Nestman is far from a novice. He has some excellent records, made at Palm Beach and at various eastern points, and

has driven the same car which he is to drive in this meet two miles in a minute and forty-two seconds from a standing start. This record was made over the Waterloo straightaway course, which is not nearly so good a track as the one over which he will drive today.

Entries have been coming in at a lively clip. The list as it was Saturday at noon follows:

Automobiles.
E. M. F. company, E. M. F. Nebraska Buick company, two Buicks. Huffman Automobile Co., Hupmobile. Midwest Automobile Co., Cole. Paxton-Mitchell Co. Cadillac Company of Omaha, Cadillac. Racine-Sattley Co., Firestone. Ralph Duff. Standard Automobile Co., National. John Deere Plow Co., Velle. Laninger Implement Co., Oakland. Freeland Bros. & Ashley, Midland-Mason.

Motorcycles.
H. McFarlane, Excelsior. Omaha Motorcycle Co., Redding Standard. Louis Fiesher, Merkel. Edgar Hyland, Merkel. Otto Hamer, Excelsior. Ralph Bates, Excelsior. Clyde Mickel, Thor. William Jacobs, Excelsior. George Gambler, Harley-Davidson. Charles Rosenberry, Indian. Walter Bell, Indian. John Fruth, Indian. Morris Wilson, Thor. Arthur Beck, Thor. E. S. Stiles, Excelsior. George Bridenbecker, Excelsior.

BIG POOL MATCH IS ARRANGED

Suffering with Blood Poison, Jack Doyle Plans Event.

NEW YORK, Sept. 3.—Despite the fact that he has been laid up with an attack of blood poisoning Jack Doyle announces that he had arranged for a series of games for the pool championship, to be played in his Forty-second street hall on September 6, 7 and 8, between Jerome Keogh, the present title holder, and Tom Hueston, the champion.

Keogh won the title from Hueston here in New York, and has defended it successfully twice since in matches with other players. Hueston has always believed that he would win back the honor, and Doyle succeeded in arranging the coming match.

GREAT AUTO MERGER RUMORED

Several Big Concerns Gathering in the Tent of a Holding Company.

The automobile world of manufacturers and their far-reaching allies are busily discussing the plans of a new merger in the Cleveland district, a region from which few merger reports have hitherto emanated, and this, too, in spite of its prominence as a manufacturing center of the cars on the American market.

Considerable mystery is being cast over the merger, which has at least passed through the embryonic stage of incorporation, and little light is thrown upon the interests back of it by the names appearing in the articles of incorporation. Diligent inquiries among them have elicited no direct information, and that they are merely acting in a "dummy" capacity until the plans for real action are sufficiently matured, is generally admitted.

From the most reliable source it is understood the merger promises to take its place in the front rank of holding companies, now becoming so fashionable in the automobile manufacturing world. Conservatively capitalized—\$4,000,000 is the capitalization as a starter—it promises to absorb the manufacturing of one of the highest-priced cars marketed, and, by using the selling agencies of the concern, go into active competition with three grades of cars in demand, the leader in the \$5,000 class, the next in the \$2,500 and the third in the more popular \$1,500 grade.

Concentration of manufacturing and selling forces is the propelling influence for the merger and big New York financial interests are the prime movers in an undertaking, which, carried out on the lines now in the making, will concentrate under one roof and in a central organization, the manufacture and marketing of this standard of cars.

Holding company or merger, conservative Cleveland's motor interests are in the throes of speculation and many reports are current as to the possibility of a gentle corporation, of which the \$4,000,000 company, at that one of the largest in the state of Ohio, is the forerunner.—Chicago Record-Herald.

Bellevue Hopes for Strong Team on the Gridiron

Dopesters Are Figuring Out What the Chances Will Be This Fall.

Bellevue's chances for a winning foot ball team this fall are about what you could call "fair to middling." The line will be strong but the backfield looks bad. Report has it that Morter, who has starred at half for the last three years and who was captain last year, will not be back at school. Morter is one of the best players that ever donned a Bellevue uniform and his loss will be a heavy one to the team. Enfield, fullback, and Morter's running mate, graduated last spring and a new man will have to be developed to fill his place. With the exception of these two men, however, all of last year's team will be available.

Barry, at center, will captain the team. He is a veteran at the game and a strong, steady player. Brandt and Rice will take care of the guard positions. David Primrose, who made such a record for himself on track this spring, is very likely to be tried out for fullback. If not, he will be played at tackle, his old position. Custer and Fowler will doubtless put up a hard scrap for the other position at tackle. Jones and Clabaugh are doped out for the ends. This will make a strong and heavy line as all the men have had at least one year's experience and will aver-



1911 Cadillac 30 Deliveries have started.
A Few Open Delivery Dates this month.

Send for free interesting Booklet on Operating a Car.

Cadillac Co. of Omaha

Tel. Douglas 4226. 2050 Farnam Street.

The Bee's Automobile Directory

BABCOCK R. R. KIMBALL, 2026 Farnam St.

Mid-West Auto Co. Cole 3051.500. Cole Flyer \$1,500. Wascott 40 \$2,000. FULLY EQUIPPED. 510 South Nineteenth Street. Phone D-5005.

Jackson Detroit Electric PIONEER IMPLEMENT COMPANY, Council Bluffs, Iowa.

THE PAXTON-MITCHELL CO. AUTOMOBILES Storage and Repairs. Doug. 7281— 2318 Harney Street. —A-2011

Mason MIDLAND MASON Freeland Bros. & Ashley 1115-1117 Farnam St.

FRANKLIN PEERLESS GUY L. SMITH, 2207 FARNAM ST.

BAKER ELECTRIC Electric Garage DENISE BARKALOW, Proprietor 2218 Farnam Street.

AUTOMOBILE INSURANCE 500 Brandeis Building Phone Douglas 29. H. E. PALMER, SON & CO., John W. Redick, Mgr. Auto. Dept.

KISSEL KAR \$1,500 30 H. P. \$2,000 50 H. P. \$3,000 60 H. P. KISSEL AUTO CO. 2129 Farnam St.

Velle MOTOR CARS VELLE AUTOMOBILE CO., 1902 Farnam St. John Deere Plow Co., Distributors.

Ford Motor Co. Temporary Location 1818 Farnam St., Omaha, Neb.

W. L. Huffman Auto Co. SELLS THE BEST CARS Interstate \$1,750 Hupmobile \$750 2025 FARNAM STREET.

Locomobile Mattheson J. J. DERIGHT CO. 1818 Farnam St.

Detroit-Electric JACKSON Pioneer Implement Co. Council Bluffs, Iowa.

Mitchell Coit Automobile Co., 2209 Farnam St.

Stearns WALLACE AUTOMOBILE CO. MOTOR CAR 24th—Near Farnam Street.

BRUSH RUNABOUT A MARVEL OF WORKMANSHIP T. G. NORTHWALL CO. 914 Jones St.

E. H. Fredrickson Automobile Co. Thomas, Hudson Pierce, Chalmers-Detroit 2044-46-48 FARNAM STREET

Deright Automobile Co. Stoddard-Dayton, Waverly, Lexington, 1814-16 Farnam.

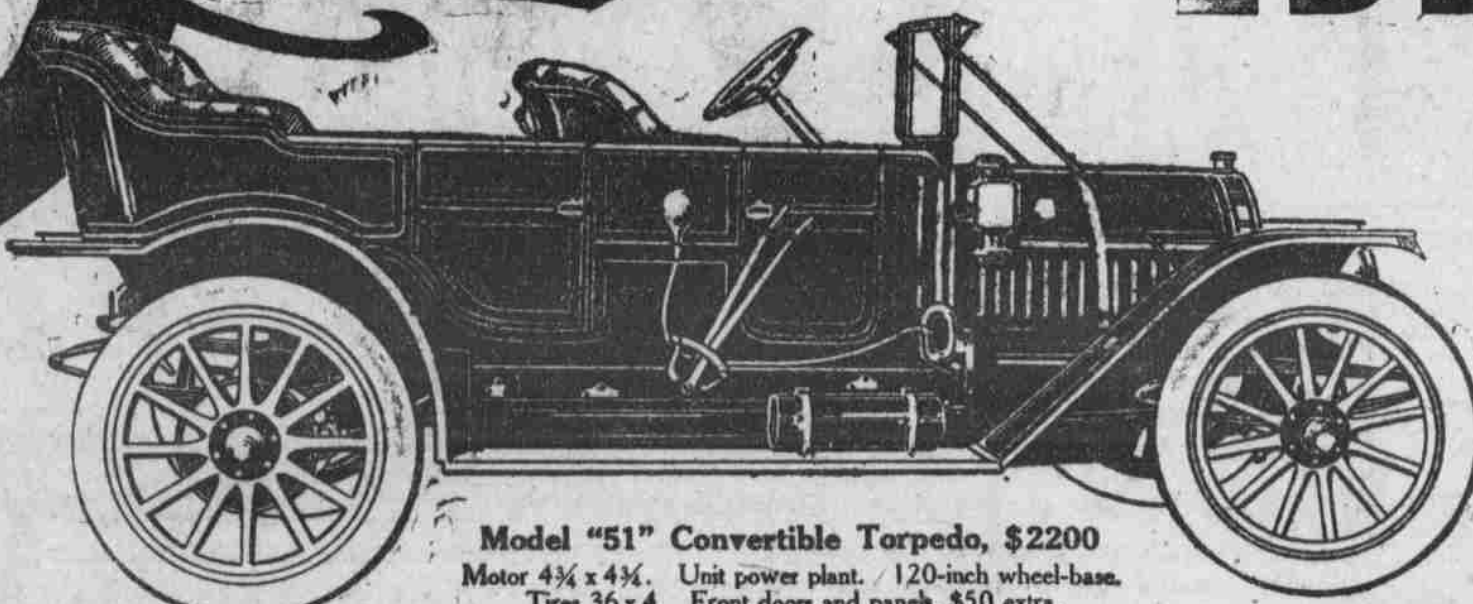
Henry H. Van Brunt Overland, Pope Hartford Council Bluffs, Iowa.

"MURPHY DID IT" Auto Repairing Painting Trimming 14TH AND JACKSON

Nebraska Buick Auto Company Buick and Oldsmobile Cars... Lincoln Branch, 13th and F Sts., E. E. SIDLES, Gen'l Mgr. Omaha Branch, 1912-14-16 Farnam St., LEE RUFF, Mgr.

Apperson Automobile Co., 1102-04 Farnam APPERSON CARS

Jackson 1911



Model "51" Convertible Torpedo, \$2200
Motor 4 1/2 x 4 1/2. Unit power plant. 120-inch wheel-base. Tires 36 x 4. Front doors and panels, \$50 extra.

No hill too steep
No sand too deep

Touring Cars Made Into Torpedoes in an Hour's Time

"Jackson" touring models can be fitted with removable front doors and panels. For fall and winter use or extended touring, the protection afforded in a car of the torpedo type gives it an advantage that cannot be denied. There are many automobile users, however, who feel that for city driving, they do not care to sacrifice the freedom and convenience of an open car. It is to these that we particularly recommend our Convertible Torpedo Types. Front doors and panels are furnished at a slight extra charge—the loosening of a few bolts suffices to remove them, leaving the regular, standard touring car.

Oil-Tight and Dust-Proof Construction

"Jackson" motors are of the Unit Power Plant type—Motor, Clutch and Transmission being enclosed in one oil-tight and dust-proof case. Perfect lubrication is assured by the circulating oil system—dust and dirt are absolutely excluded from the working parts. Plenty of oil and no dirt—that's why "Jackson" motors are wear-proof.

Full Elliptic Springs—Front and Rear

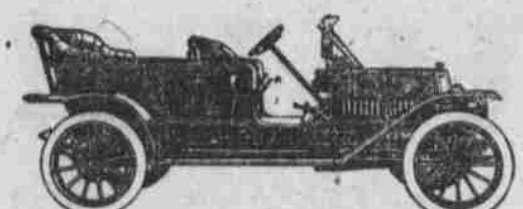
All models are hung on full elliptic springs, front and rear. Their free, easy action absorbs the jolts. This is an important factor in the life of a car. The "Jackson" is the acme of comfort—rough roads can be taken without jar. In all models the weight is carried close to the ground, and the cars have a balance that is appreciated by the critical driver.

Ten Years of Successful Production

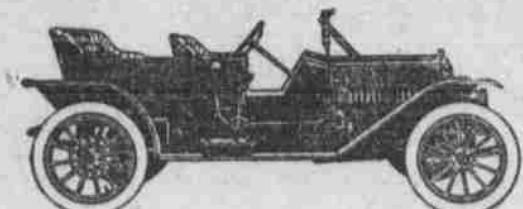
The Jackson Company has built practical, successful automobiles for the past ten years—it has never offered to the public an inferior car. The Jackson plant is complete within itself. Modern machinery and efficient manufacturing methods enable us to produce a car from the raw material—a car which contains the utmost value for the price. Any "Jackson" dealer will promptly give you a demonstration.

JACKSON AUTOMOBILE CO. Jackson, Mich., U.S.A. Licensed under Selden Patent

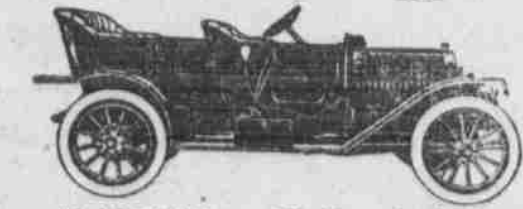
Pioneer Implement Co., Distributors COUNCIL BLUFFS, IOWA



Model "51" Touring Car, \$2200
Motor 4 1/2 x 4 1/2. Unit power plant. 120-inch wheel-base. Tires 36 x 4.



Model "51" Tourabout, \$2200
Detachable Tonnage. Motor 4 1/2 x 4 1/2. Unit power plant. 120-inch wheel-base. Tires 36 x 4.



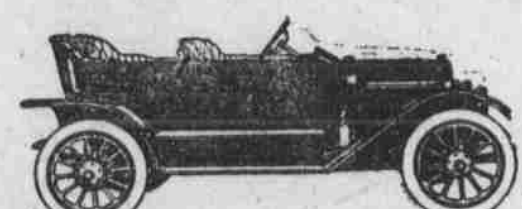
Model "41" Convertible Torpedo, \$1700
Motor 4 1/2 x 4 1/2. Unit power plant. 110-inch wheel-base. Tires 34 x 4. Front doors and panels, \$50 extra.



Model "41" Touring Car, \$1700
Motor 4 1/2 x 4 1/2. Unit power plant. 110-inch wheel-base. Tires 34 x 4.



Model "41" Tourabout, \$1700
Detachable Tonnage. Motor 4 1/2 x 4 1/2. Unit power plant. 110-inch wheel-base. Tires 34 x 4.



Model "38" Torpedo, \$1650
Full Torpedo. Left-hand drive. Motor 4 1/2 x 4 1/2. Unit power plant. 115-inch wheel-base. Tires 34 x 4.



Model "35" Convertible Torpedo, \$1250
Motor 4 x 4. Unit power plant. 105-inch wheel-base. Tires 32 x 3 1/2. Front doors and panels, \$40 extra.



Model "35" Touring Car, \$1250
Motor 4 x 4. Unit power plant. 105-inch wheel-base. Tires 32 x 3 1/2.



Model "35" Roadster, \$1250
At a slight additional charge, Model "35" will be furnished with detachable tonnage, which may be replaced with a roomy and convenient deck. Front doors and panels, \$40 extra.



Model "25" Roadster, \$1100
Motor 3 1/2 x 4 1/2. 105-inch wheel-base. Tires 32 x 3 1/2. Tank \$15 extra. Gasoline tank in rear.