

**13,000 Acres of Public  
Land at Auction**

**The State of Idaho Will Sell to  
the Highest Bidder Orchard and  
Farm Lands Under United States  
Government Minidoka Project**

May 27, 1910, the state of Idaho will offer for sale 13,000 acres of land, all of which vast tract is located on the United States government Minidoka project, and is supplied with water from the great government dam across the Snake river at Minidoka, Idaho.

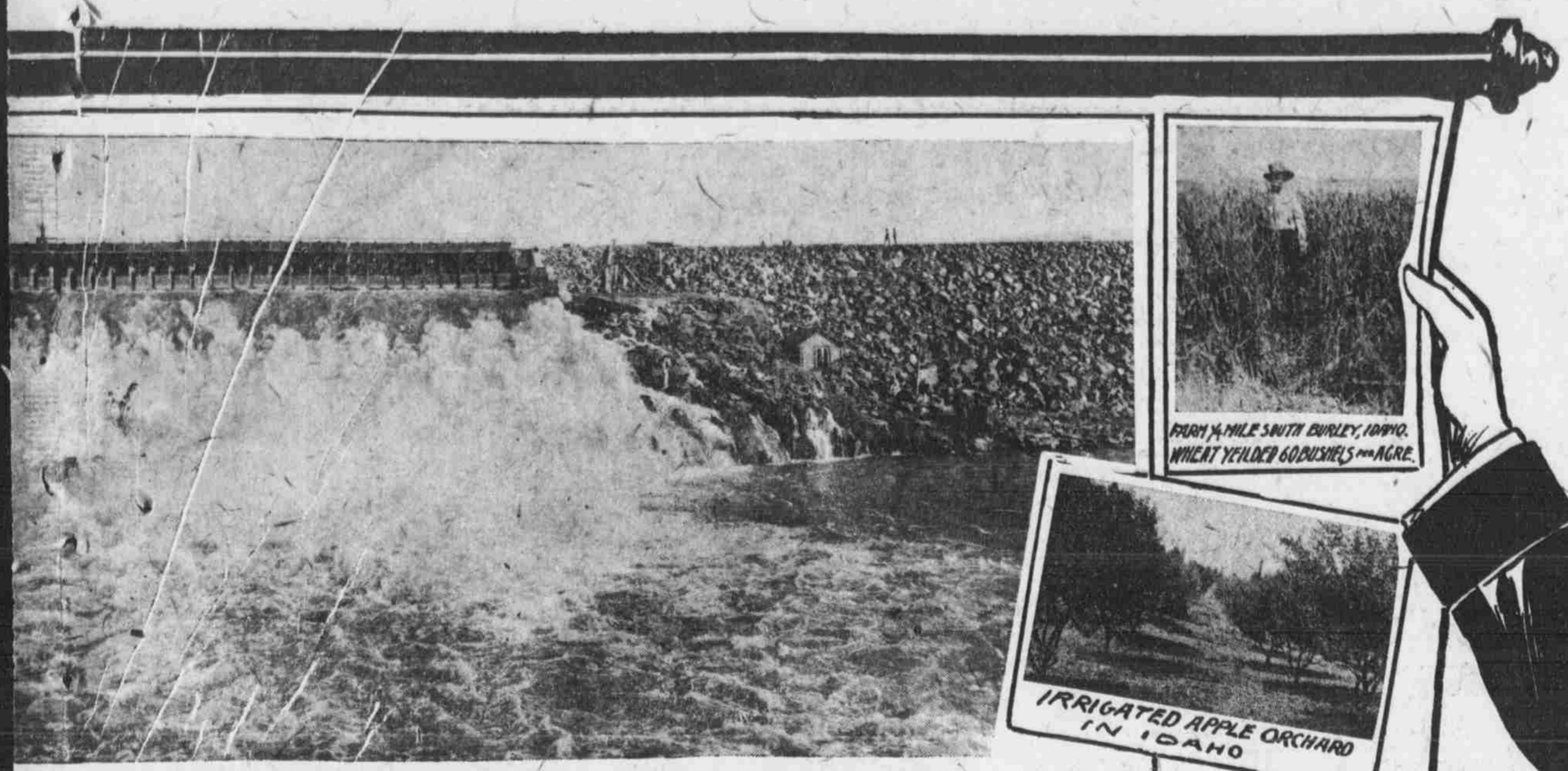
This land will be sold one-fifth cash, the balance payable in sixteen annual installments. Pay one-fifth down and take sixteen years in which to pay the balance.

Farmers are wanted in Idaho; men who will cultivate the soil; develop the land, and contribute to the agricultural production of the state.

Write today for booklets, plats and definite information concerning this great opportunity to secure ALMOST FREE LAND.

**F. E. Griswold, Sec'y.,**

Burley Commercial Club, - - BURLEY, IDAHO.



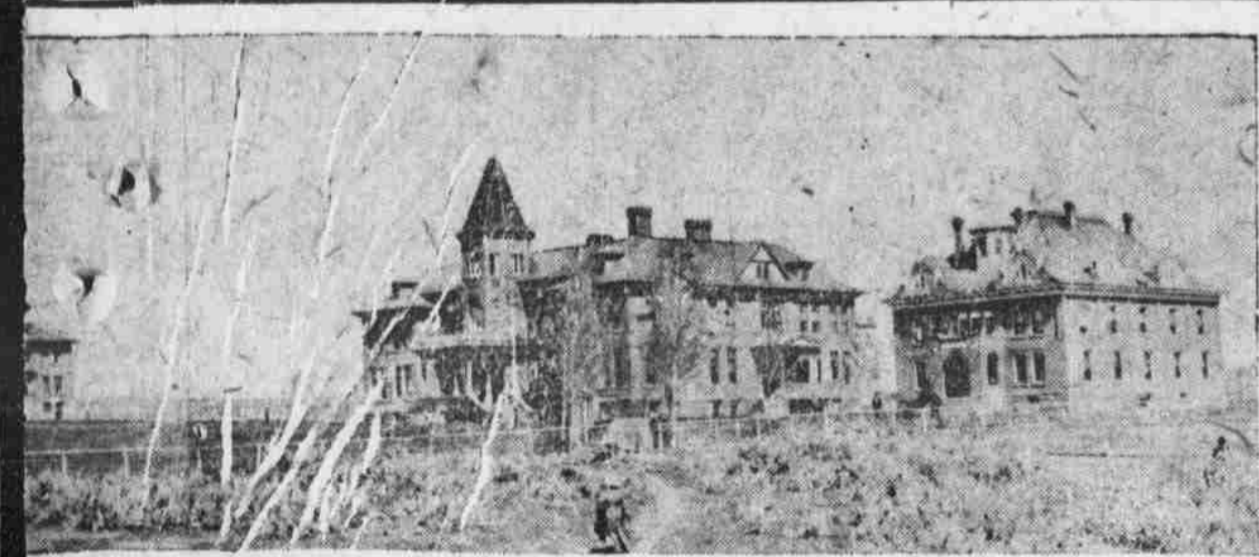
DOC. WATER FROM IT JUST TURNED INTO LATERALS AT BURLEY, IDAHO



FOUR 1/2-MILE SQUAT BURLEY, IDAHO. WHEAT YIELDED 60 BUSHELS PER ACRE.



IRRIGATED APPLE ORCHARD IN IDAHO



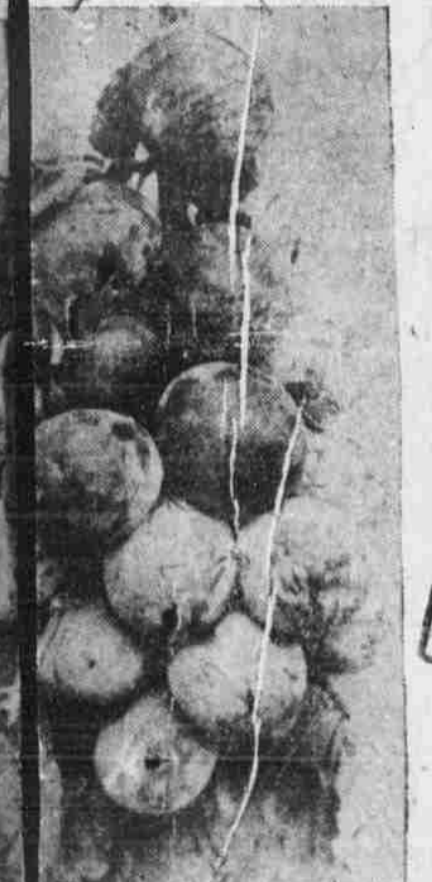
AT ALBION IN CASSIA CO. IDAHO



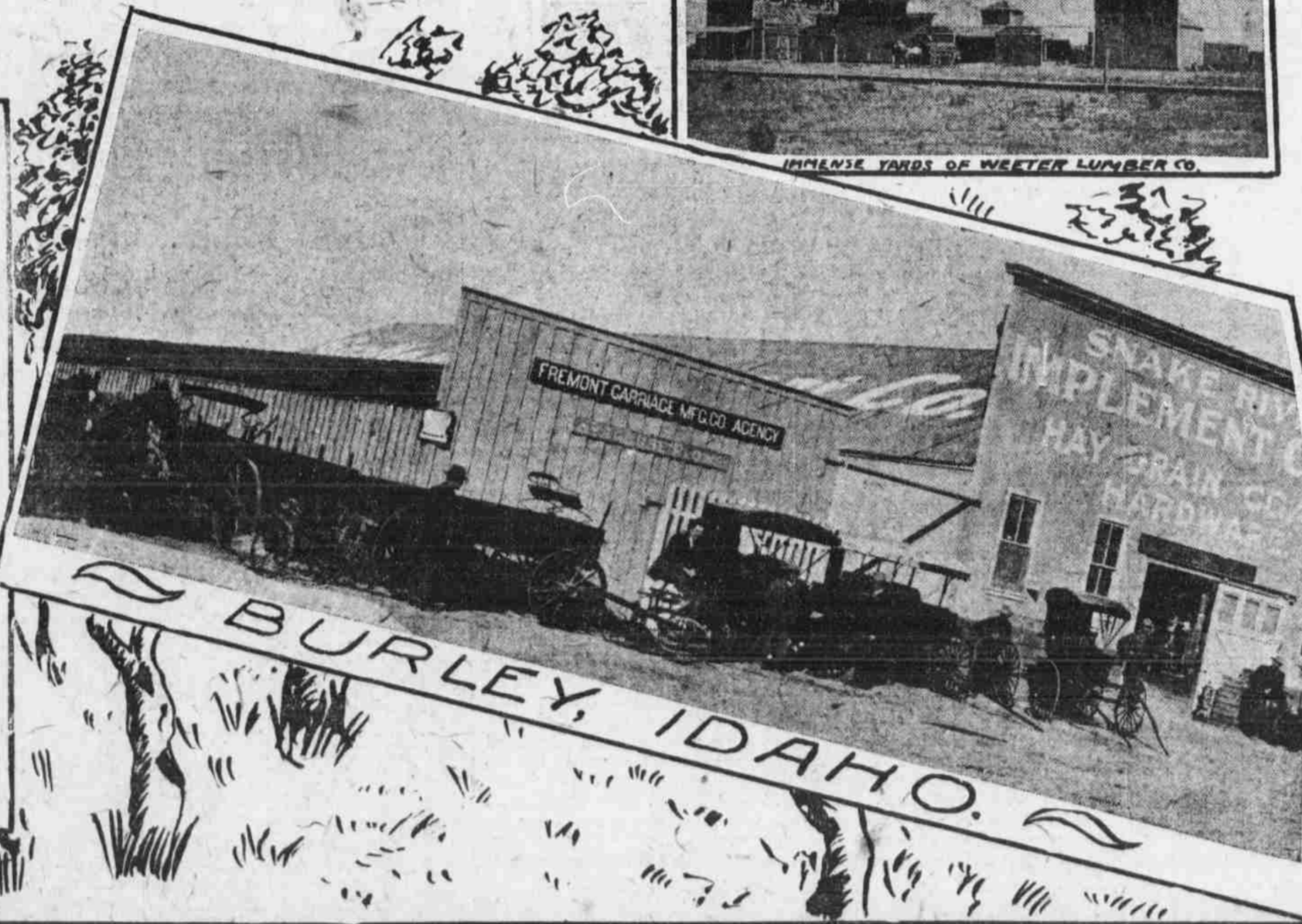
THE HOME OF BISHOP L. W. ROBBINS OAKLEY, IDAHO



IMMENSE YARDS OF WEEKER LUMBER CO.



BARLOADS OF SOUTHERN IDAHO POTATOES ARE SHIPPED TO ALL PORTS EVERY YEAR



BURLEY, IDAHO.

**Water at Minidoka--\$3,000,000 Dam is Now Completed  
If you in Cassia County, Idaho, want You to Come. Double Your Money in Idaho.**

ant water been estimated of water, acres one

markably very easy rumpatch, e. These crops) and rado Agri- pass even those ele- curate best in all sugar beet

mer, with ntry ideal

for the raising of all cereal crops. Wheat is of fine quality and yields abundantly. The sixty-five-acre tract has a record of eighty-one bushels per acre. Oats weigh as high as fifty-two pounds per bushel and frequently run 120 bushels to the acre.

All root crops do well, particularly potatoes. These grow to great size and are of excellent quality. The potato raiser has a most profitable industry. He is not troubled by "potato bugs," and he has a waiting cash market for his product.

Just now in Cassia county much attention is being paid to fruit culture. The fruit of southern Idaho is famous in all markets. The prices obtained for them, the preference given them by the consumer and their excellent shipping quality gives the fruit a great promise.

All varieties of fruits reach a high state of perfection, but the apple, on account of the world-wide demand for it, is very

much in favor and is being planted extensively. Orchards produce net profits far above the gross returns from most farm products. There is just the proper altitude, 1,000 feet, on the United States government Minidoka project in Cassia county.

Sam Rich, one of the foremost farmers in North America, an authority of world-wide fame is planting one orchard of 1,000 acres. Associated with him is his son, S. Grover Rich, cashier of the Burley State bank and Leonard Fowler, a Chicago newspaper man. These men will produce from this orchard in five years 25,000 boxes of apples or 400 carloads; or more than ten solid freight trainloads of forty cars to each train. In ten years this production will be doubled by this one orcharding company alone. The market is never a falling one as the crop for last year was 25,000,000 boxes

short; for this year the shortage will be much greater.

The United States government is installing an immense power plant at the Jackson's lake. This power will only be needed for pumping during a short period of the year and for the balance of the time will be sold to the settlers at nominal cost. Thus lighting, heating and power will be matters of small cost.

The government has built a complete set of distributing canals which will carry water to each man's land. These works are all built as substantial as men and money can build them. Concrete and steel are used for the headgates, concrete and stone piers to all bridges. In fact, the strength and durability of the works contrast strongly with the works usually constructed for such purposes. All this is important, as upon the permanent character

of the original structure depends very largely the maintenance cost in the future. There will be generated at the dam some 12,000-horse power. This power will belong to the settlers when the government has been repaid its original expenditure and will certainly pay all maintenance of the entire system.

When the government began developing the tract all of the land was either government land or state land. All of the land has been platted into what is called farm units. Each farm unit contains eighty acres, excepting land within a radius of one and one-half miles of government towns, which is reduced to forty-acre units. The title to government lands is secured by homesteading in the usual way, without price, except that no commutation can be obtained, and the settler is required to reside on the land the full five

Cassia county wants you to come. The roads are as smooth as an automobile race track; electric light, heat and power are cheaper here than anywhere else in the world. The land is the most fertile, the trees the most productive and Cassia county has more transportation facilities than any other county in any other state in the west.

For FREE booklets, letters of general information, photographs and lists of opportunities, address:

**F. E. Griswold, Secretary;** Burley Commercial Club, Burley, Idaho.  
**G. A. Azize, Secretary;** Albion Commercial Club, Albion, Idaho.  
**W. J. Mitchell, Secretary;** Oakley Commercial Club, Oakley, Idaho.