

### BUHL LOOKS MIGHTY GOOD

#### New Idaho Town Looms Big on Map Just Now.

### ITS ORCHARD LAND IS RICH

#### Vast Area Around It Just Beginning to Yield the Wonderful Wealth that is Waiting on Industry.

With vast acres of delta land stretching round it, and with all the conveniences that science has produced giving comfort and facility to handle its resources within it, Buhl, Idaho, is one of the towns that are dissipating a misconception. With towns like Buhl standing as concrete contradictions of the romantic reports picturing "the wild and woolly" west, the business men of the east are fast learning that the west holds forth opportunity in a civilized guise.

It is becoming recognized as a matter of fact that Idaho towns are more up-to-date than eastern towns of a like size. In Idaho everything is new and modern, and of the latest and most approved type. A fitting representative of these towns is Buhl. There are five churches in the town of Buhl, a modern graded school system, daily mail and complete postal facilities, passenger and express service, and the news of the world brought to the doors of the inhabitants by a daily paper. Buhl has a water system for both domestic and business needs that affords complete fire protection.

Ample markets in the town contain everything necessary to the dwellers, at reasonable prices. A rural mail delivery is being established, and before the present year is ended it is expected a trolley line will be in operation. There are electric lights and telephones in Buhl. The eyes of an eastern man are opened in amazement when he comes upon the country surrounding Buhl in his investigation. Here he finds farming on a scale and under methods he never dreamed of before. The farmer in this section does not depend upon rains for his crop, neither does he fear that floods will destroy his products.

A long growing season and water applied at just the right time conspire to cause plants and trees to grow in remarkable fashion. The plant life is not affected by insects, worms and other pests, as is the case in other climates.

An example of what is developed in the Buhl country was shown when a merchant of the town offered a five-dollar hat for the largest potato grown in that vicinity. The winning potato weighed eight pounds and two ounces, and another one submitted weighed seven pounds and nine ounces. The Hon. E. H. Grubb of Colorado, an authority on potato culture, said recently, "I would not be afraid to undertake to pay for any piece of land I have seen in this section with the crop of potatoes I could raise on it."

A considerable part of the possibility in the Buhl section was created by the great irrigation ditch which was built through

it. Much fruit is raised on the surrounding land as well as vegetables. One farmer reports he has successfully produced five varieties of apples, four varieties of pears and also plums, prunes and smaller fruits on his ranch.

Prof. F. G. Holden, the agricultural expert of the Iowa Agricultural college, said concerning the Buhl district: "Trees there have a growth in three years equal to that of ours in five years."

The quality of the fruit grown near Buhl has been appreciated as the very best in reports at the several great expositions. A report on this score from the Chicago exposition, based upon a large exhibit representing twenty-three varieties correctly named, is as follows: "The fruit is meritorious for dessert and cooking, but excels chiefly in color, uniform size, freedom from insect and other blemishes, and for these reasons are especially valuable for market purposes."

Statistics showing the results of fruit growing around Buhl have shown that many orchards are producing from \$50 to \$1,000 per acre per year. Small fruits and berries are unsurpassed in the region.

In the possibilities of farming around Buhl it has been shown that corn of a fine quality can be grown there with a yield of 824 bushels to the acre. Corn, alfalfa and hogs make a fine combination for profit that is being used by many farmers of the section. The sugar beet industry is also being developed to a large extent throughout the Buhl country. It is expected that this industry in the near future will take its rank as one of the foremost in operation there.

An especially mild and equal climate helps the country in its farming potentiality. The days are sometimes warm in July and August, but the nights are invariably cool. The coldest winter experienced during the winter of 1909 was 3 degrees above zero. Prostrations because of the heat are absolutely unknown.

There are no floods, droughts or blizzards. Under these influences of favor the farmers of the section find it easy to raise with equal facility, cattle, hogs, sheep, poultry, fruit, wheat, oats, alfalfa and vegetables.

It is expected by those who have cast their lot in Buhl that the country surrounding it will one day be the greatest fruit raising section in the land. The Buhl country at this time has been settled and cultivated from three to five years. Owing to the smallness of most of the farms, the district has developed with marvelous rapidity. It is now under full headway toward substantial growth.

The selection comprises 276,000 acres and was the first great area to receive water from the Snake river for irrigation purposes. Prices for the land varies according to location and improvement. Raw lands are selling for \$20 to \$30 per acre, while improved farms can be had for from \$75 to \$109 an acre, with water rights included.

Buhl has been selected as the operating point for vast irrigation enterprises, because of its commanding situation as the leading town in the great irrigational district. A dam is being constructed at a point thirty miles south of Buhl, and a canal line will convey the stored waters in the reservoir upon 50,000 acres of high grade agricultural land. The northern end of this tract is situated about fourteen

miles southwest of Buhl. The lands in this tract may be purchased for 50 cents an acre in forty, eighty and 120 or 180 acre tracts. The price of water right is \$40 per acre, payable 10 per cent each year for ten years.

Some of the most beautiful scenery in the mid every opportunity to live and prosper amid mountains seen in three directions. The rivers abound in trout and are possessed of most attractive spots.

The town itself holds forth exceptional advantages for education and the general culture of its inhabitants. There is a good moral atmosphere. It has a kind, broad-minded, western spirit, for which the western people are famous. The settler here will world live in the Buhl district, with snow in a growing community. For additional information, address Secretary, Buhl Commercial club, Buhl, Idaho.

### Irish Ready for an Election at Any Time

#### War Chest is Well Filled and Nationalist Party is United as it Has Never Been.

BY THOMAS EMMETT. DUBLIN, April 14.—(Special Dispatch to The Bee.)—Even if the next general election should be held as early as May, the nationalists will be ready for it. As soon as the results of the last general election became known the nationalist leaders were convinced that another battle would have to be fought before the way could be cleared for home rule. They began to prepare for it at once. The war chest has been steadily filling, and it is now certain that the legitimate expenses of the next general election can be met. As soon as the situation clears up sufficiently to show when the next battle will be fought, an appeal will be made to America for funds and assurances have been received they will be forthcoming.

Redmond's position has been greatly strengthened by the recent course of events and it is probable in the next Parliament the O'Brien faction will not have more than half the strength it now has.

**Breach of Promise Suits.** The daughter of a woman who claims to be the housekeeper of the late President Garfield has just won a suit for breach of promise in Cork. She is Johanna Callaghan, Knockhane, Kilmichael, and she sued James J. Buckley, who resides at Ballyhenon, near Barney. Buckley had also lived in America, but returned to Ireland some time ago with \$5,000. He bought a farm and paid court to Miss Callaghan. She consented to marry him, but his affection cooled and the suit resulted. He was mulcted in the sum of \$50 for trifling with the young woman's affections.

**Sir Horace Plunkett.** Sir Horace Plunkett, who is endeavoring to establish a national trade mark for Irish butter, comes of a family the members of which have for the last seven centuries played a small part in the history of Ireland.

After leaving Oxford, he took to cattle ranching in western America, where he spent ten years and acquired that knowledge of practical farming which has since stood him in such good stead. He still possesses a large property in the west, which he never fails to visit regularly once a year.

No man has worked harder than Sir Horace for the improvement and organization of Irish agriculture. It was he who, twenty years ago, founded the great Irish co-operative movement.

Enterprising to a degree, Sir Horace Plunkett was among the first in this country to ride the safety bicycle. In this respect, however, he had his run of bad luck, having broken his leg in a fall from his machine, and just as his leg was nearly healed, meeting with another nasty accident, which laid him low for several months, and which all but cost him his life.

**Will with a Long String.** An unusual bequest has been made by Patrick Murphy of Newry, County Down, who died December 20, leaving an estate in the United Kingdom amounting to \$2,115.

After making provision for several legacies amounting to \$2,000 to various institutions, he left the residue of his estate to the town commissioners, or rather, the urban council of Newry, for the purpose of paying off the debt of the town and relieving the rate. But he added: "Inasmuch as what he might leave after paying off all other legacies may be insufficient for the purpose, and 'as I have no confidence either in the ability or good sense of the present urban council, it is my will that my residuary personal estate shall not be handed over to the board for a period of twenty-one years from the date of my death."

**Busy Moonshiners.** Reading premises in a crowded quarter of Belfast, the police found an illicit still in the bath room in full working order, together with a quantity of spirits, and a second still was found in another room. The front of the premises was fitted up as a grocer's shop.

**A Rising Statesman.** The honorable member from the "Stentch" district, who had just taken his seat, suddenly sprang to his feet again.

"Mr. Chairman," he exclaimed, in ringing tones, "I rise to a question of personal privilege."

"The chair recognizes the gentleman," "I have a right to demand," roared the honorable member, "the name of the billy-bad-dogged rascal that stuck a bent pin in my chair!"—Chicago Tribune.

### Engineers Are Kicking Against Promoters' Deal

#### Protest Made that Combination Gutter and Curb is Made to Sell, but Not for Use on Streets.

Promoters working for paving contractors are cultivating some trouble for themselves unless they give more care to the eternal fitness of things.

The city engineer's office has considerable fault to find with the promoters when they have combination curb and gutter specified for streets on which brick pavement is to be laid. The kick made by the engineers is that, while the combination curb and gutter is all right where asphalt is to be laid down, it is all wrong where brick is to be laid. The gutter and the curb do not match up properly where they join and the engineer's men insist that the result will be bad.

Two or three instances are now in hand where this mistake has been made and the city engineer's office will endeavor to have a correction made before the contracts are finally entered into for the streets where the combination curb and gutter has been promoted to go with a brick pavement.

No one in authority will talk about the matter for publication, but some men about the city hall intimate that the promoters probably got more money out of the combination curb and gutter than they do out of any other kind of curbing.

**A Rising Statesman.** The honorable member from the "Stentch" district, who had just taken his seat, suddenly sprang to his feet again.

"Mr. Chairman," he exclaimed, in ringing tones, "I rise to a question of personal privilege."

"The chair recognizes the gentleman," "I have a right to demand," roared the honorable member, "the name of the billy-bad-dogged rascal that stuck a bent pin in my chair!"—Chicago Tribune.



### HOMES ON CREDIT IN IDAHO

You can make a better home in Idaho than in any other state; there's more to make it with! The landscape of mountain, and river, and hill and vale; the fertile irrigated land; the quick cash markets; good neighbors; all these are in Idaho.

#### Get busy today! Right now!

We will send you a beautiful booklet free of cost. A post card request in all. Send today.

This booklet tells of American Falls; the one power city of the intermountain west. Wealth awaits you

### HOWELL INVESTMENT CO.

American Falls, Idaho.

40¢ Per Day and You have an income of \$1000.00 Per Year for life!

Were YOU one of the scooters when the orange groves were offered for FIFTY CENTS PER ACRE? You bet that time didn't you? Don't lose this time. Idaho is one of the richest states in the union, just developing, and land values are increasing. You can buy five acres of bearing orchard from us; pay one hundred dollars down, and TAKE SIX YEARS TO PAY THE BALANCE. THE BANK OF HOLLISTER, Hollister, Idaho, handles your money UNTIL YOU ARE SATISFIED. Our FREE booklet tells about it. You do NOT take a chance when you buy orchard land. THE RESULTS ARE ABSOLUTELY CERTAIN. Western orchards in other sections HAVE PAID AS HIGH AS \$1,000.00 PER YEAR NET. YOU CAN AFFORD TO BUY THREE THOUSAND TWO HUNDRED AND FORTY DOLLARS WORTH OF ORCHARD. ALL about this opportunity. Send for it RIGHT NOW. TO: TWIN FALLS LAND & ORCHARD CO. P. O. Box 100, Twin Falls, Idaho.



## DON'T TURN A WAY

IDAHO is "the fairest land the sun ever shone on." A writer of national repute wrote that of the Snake River Valley, Idaho is more than that; more than beautiful; more than fertile. Idaho is THE GATEWAY TO OPPORTUNITY LAND. You have overlooked many and many a good chance in your life time; haven't you? Then don't overlook this one. Don't turn away from this, the biggest bit of information you will find in this Sunday paper today. THERE ISN'T A TOWN IN THE WHOLE OF SOUTHERN IDAHO WHICH DOESN'T NEED YOU! There's a chance for a MAN WILLING TO WORK in every single city GREAT AND SMALL. Sunny Southern Idaho is a pleasant place wherein to live; profitable wherein to work; and YOU CAN GET IN AND GET IN RIGHT WITH A VERY SMALL CAPITAL. Write for our booklet on Buhl. It's FREE.

In all the golden west there is no such land as Idaho. Farm laborers get from \$12 to \$15 per month. Carpenters get from \$3.50 to \$4.50 per day and masons draw from SIX TO SEVEN DOLLARS PER DAY. Lumber is CHEAP and can be bought here for as low as \$25 per thousand feet. The climate around Buhl is as mild and as equable as any HEALTHFUL CLIMATE in the world. There is never more than two inches of frost in the ground; and never more than five inches of ice. We have occasional rains in the Fall; with a LIGHT snowfall in the Winter and Spring. YOU CAN'T BEAT THAT IN THE MIDDLE WEST! There is no "rainy season" at Buhl; NO CYCLONES; NO HAIL STORMS; NO SUN STROKES AND VERY LITTLE THUNDER AND LIGHTNING. We have no high winds; no long spells of cloudy weather and no extremes of heat and cold. In the summer there is never a night that bed covers are not comfortable; in the Winter never a night a bed room fire is needed. At Buhl you can stand in the street and look down the main avenue for THIRTY MILES; CLEAR AWAY TO THE SNOW CLOTHED PEAKS OF THE ROCKY MOUNTAINS. You can't beat that in the Middle West! To sum it up; Idaho is the ideal state to live in; you can MAKE THE MOST BEAUTIFUL HOME IN IDAHO; and in Idaho you can get a START WITH THE LEAST REASONABLE AMOUNT OF MONEY. You need not say that you are interested in Buhl; tell us what you would like to do. We will send you a booklet, photographs, CONVINCING BOOKS BEFORE YOU START. That's the way to come. And we will help you.

The lands around Buhl yield in a manner most profitable to the tiller of the soil. THE FARMER GETS PAID FOR HIS WORK HERE IN SUNNY SOUTHERN IDAHO! Alfalfa yields from five to nine tons to the acre; with three cuttings each year; clover from five and one-half to five tons and you get two crops; timothy goes two to three tons and there is but one cutting. Wheat goes as low as thirty-five, but as high as SEVENTY-EVEN BUSHELS TO THE ACRE. Oats give sixty bushels to the acre right along, but some good farmers who understand their business get ONE HUNDRED AND TWENTY BUSHELS TO THE ACRE RIGHT ALONG. All the grain crops do well. Potatoes have yielded as high as FIVE HUNDRED BUSHELS TO THE ACRE. And you NEVER LACK A MARKET FOR ANYTHING YOU RAISE. You can reap your crop in almost any part of Idaho and have the money for it in your pocket before night. Buhl is particularly fortunate in that respect. It is the nearest point to Jarbridge, the newly discovered gold camp; it is but eighteen miles from Twin Falls, one of the largest cities in the state. And it is located on the Minidoka branch of the Oregon Short Line (Union Pacific Railway) and has excellent train service and transportation facilities. The soil, with an average depth of SIX FEET OVER THE ENTIRE COUNTRY, is composed of a fine volcanic ash; a cooked nitrogen, alive with soil nutrients. Plant life of every kind flourishes and the district around Buhl presents the best OPPORTUNITY IN THE WEST TODAY. Send for our booklet; it tells all this Idaho into your own home. FREE.

A. J. Milner, formerly a resident of Charles City, Iowa, is now a property owner of Buhl. Mr. Milner has two farms; one of them is an orchard of forty acres; the other is a peach, peaches and grapes. Mr. Milner says: "My peach trees will not come into bearing until this year. The apples will not bear until next year. And yet I will go before a notary public and SWEAR THAT I WILL NOT TRADE MY SEVENTEEN ACRES OF UNFENCING ORCHARD LAND FOR THE VERY BEST EIGHTY ACRE FARM IN ALL OF IOWA. I have a chance to build a more beautiful home; at a less cost than possible in Iowa; can make more money with less work; have 87 acres of the most fertile land on this globe, and I had less than \$4,000 when I came to Buhl. TODAY, after living in the most beautiful section of the country on earth, I WILL GO BEFORE ANOTHER NOTARY PUBLIC AND SWEAR THAT I WOULD NOT TAKE \$25,000 for my interests in Idaho."

Write to Charles City, Iowa; Address EUGENE HOLBROOK, or JUDG CARE, CHARLES CITY, IOWA. Ask them about A. J. Milner. They know him when he was buying, selling and trading horses there. And THEY CAN TELL YOU THAT MILNER IS ABSOLUTELY ALL RIGHT. He came to Buhl four years ago; this month with thirty-five hundred dollars; today HE WOULDN'T SELL OUT FOR TWENTY-FIVE THOUSAND. That's what we mean when we say there are more opportunities in Southern Idaho than anywhere else in the world. Send for our FREE SELL BEFORE YOU START. That's the way to come. And we will help you.

### DOUBLE YOUR MONEY at BUHL, IDAHO

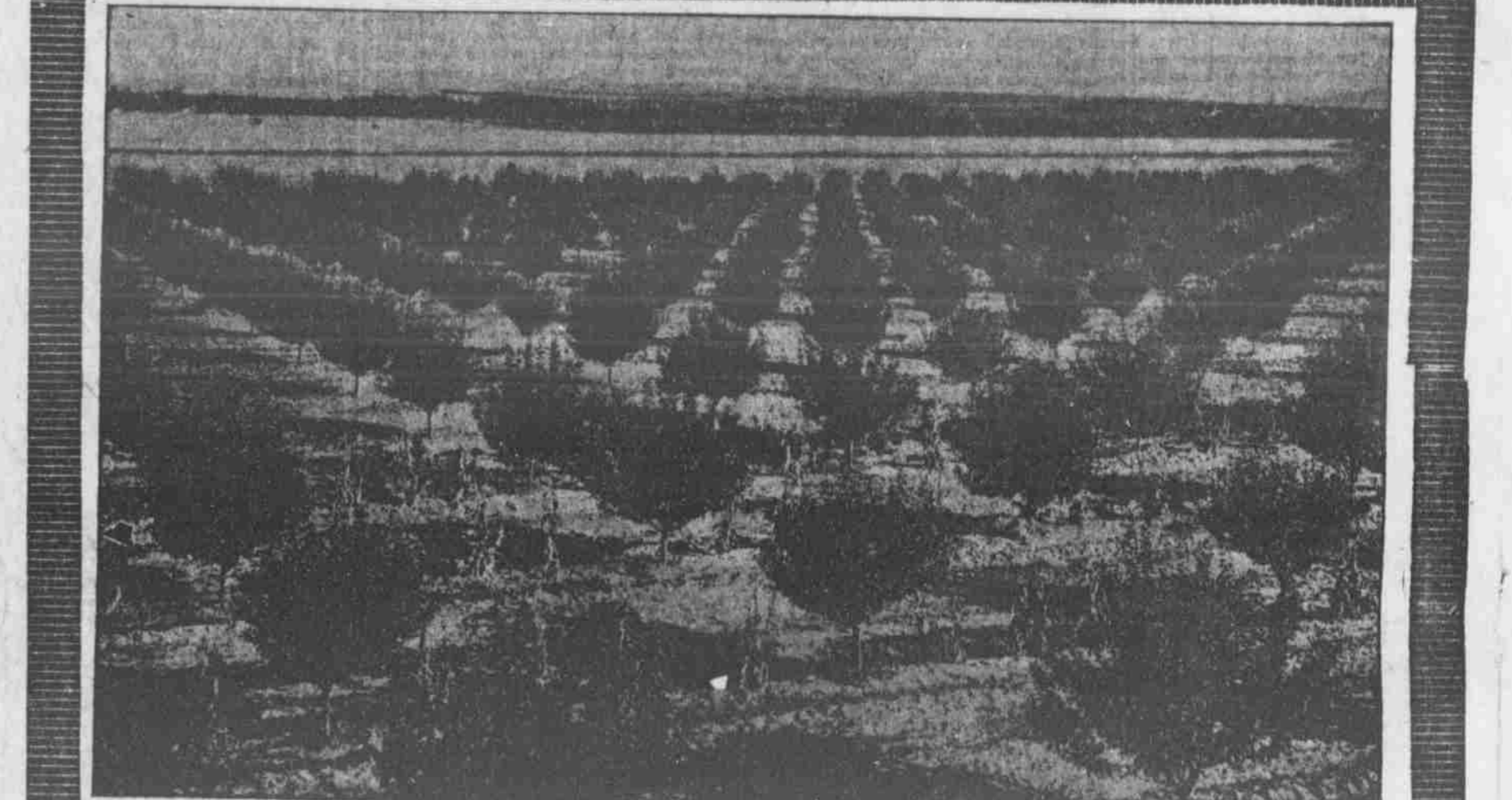
We can use any money you have in the Savings banks and more than double your interest income. WE GUARANTEE IT.

**FREE TO YOU** Fruits in natural colors—Maps are free.

**BUHL INVESTMENT CO.**

**FREE TO YOU** Pictures in Sepia tones. 35 to 50 frames are free.

**BUHL** (The Center of the South Side Tract.) **IDAHO**



This orchard is three years old. It is located four miles from Twin Falls, Idaho, and is exactly what you will get at the end of three years; if you close your option at that time. You buy an orchard like this for only \$100 first cash payment. And take six years in which to pay the balance. The beauty of the Idaho landscape; the comfort of living in Idaho is worth forty cents a day. And that's all this costs you. Read the advertisement.

## YOU WANT MORE MONEY

### MAKE \$1,000 PER YEAR IN SOUTHERN IDAHO

IDAHO has this advantage: it is but thirty-one hours distant from Omaha; not any more than that from the rapidly growing and high price, CASH markets of the Pacific Coast. THE ENTIRE STATE is filled with mining camps; PRODUCTIVE, and these provide a sure and never failing market of quick, cash demand. The Wyoming coal fields; the Montana copper and GOLD MINES lie almost at our door. Centrally located in the midst of all this insistent demand; the Idaho farmer has EXTRAORDINARY YIELDS; NO FREIGHT OVER INTERMINABLE LONG DISTANCES; allowing the railroads to get all the profit. THE MARKETS LIE CLOSE AT HAND, many of them within driving distance of YOUR FARM. YOU MUST know about Idaho; you MUST ask us.

Not any man can tell about Idaho in an advertisement. We have a 664 page booklet that tells all about Idaho. It is the most beautiful booklet ever printed by anybody, anywhere. SIXTY-FOUR PAGES OF BEAUTIFUL PICTURES LARGE PRINT, in a cover that would sell for half a dollar at any art store. WE SEND IT FREE. ASK.

main line of the Oregon Short Line (Union Pacific Railway) at Twin Falls, Idaho. Thus our great markets of San Francisco, Salt Lake City, and with the North Pacific Coast, Seattle and Portland. We have ONLY SIXTY-FOUR TRACTS. You must ask about this AT ONCE if you are to profit.

**YOU CAN MAKE OVER \$1,000 PER YEAR** from one of these ten acre tracts. IN OTHER FRUIT DISTRICTS MORE THAN \$3000 per year has been made by men who were EXTRA GOOD FARMERS. That is FROM FIVE TO TWELVE TIMES AS MUCH as the average farmer in the middle states makes net per year.

tracts are in five-acre lots and will be set with the most famous varieties of commercial apples; varieties which are known to be the best keepers, the surest yielders and best revenue getters in the world. We offer these orchard tracts for the low price of \$110 on easy terms as follows: Cash \$100 on receipt of contract and balance in monthly payments of \$12.50 for one, two, three, four and five years, and \$250 payment the sixth year without interest. We care for and receive all income off of said orchard for a period of five years, or until turned over to purchaser, and give the purchaser the option to take over his tract on the sixth year. We further agree that upon receipt of contract and first payment of \$100 to place a good and sufficient warranty deed with abstract in escrow in the Bank of Hollister, Hollister, Idaho, to be turned over to purchaser when payments have been completed.

George Bassett, a farmer living near here, last year CLEAR-ED, NET from only TWELVE ACRES over ONE THOUSAND DOLLARS. His orchard was only four years old, and Mr. Bassett is inexperienced at irrigated farming. But he made the THOUSAND DOLLARS AND HAS IT IN THE BANK.

You can have the most beautiful home in any state; the surroundings permit it. You can produce REAL MONEY with the least degree of labor. There is no hard, incessant toil; no brutalizing labor that keeps your nose to the grindstone day in and day out. The wife has time to herself, the children can go to the excellent near by schools; and YOU HAVE TIME TO MAKE A GOOD CITIZEN OF YOURSELF. The quick CASH markets are close and

possess and every dollar our friends possess and every dollar the bank will let us have buying LEAD FOR GARBOLINE. We know what this Idaho land will do. That's why we have invested. THAT'S WHY WE ASK YOU TO INVEST. WE GUARANTEE YOU SAFE ON THIS INVESTMENT. Our beautiful illustrated booklet is free.

This much we guarantee: If you put up \$100 and purchase one of these five-acre tracts; or two hundred and purchase one of these ten-acre tracts, and there is a single misrepresentation, YOU GET YOUR MONEY BACK FROM THE BANK OF HOLLISTER, at Hollister, Idaho, and WE PAY YOUR EXPENSES FROM YOUR HOME TO TWIN FALLS AND BACK. This means, in plain English, JUST WHAT IT SAYS. Send for our booklet; that tells ALL. Send right now. TODAY.

Twin Falls is the Wonder City of this Continent. Six years ago it was a sage brush plain. IOWA. Ask them about A. J. Milner. They know him when he was buying, selling and trading horses there. And THEY CAN TELL YOU THAT MILNER IS ABSOLUTELY ALL RIGHT. He came to Buhl four years ago; this month with thirty-five hundred dollars; today HE WOULDN'T SELL OUT FOR TWENTY-FIVE THOUSAND. That's what we mean when we say there are more opportunities in Southern Idaho than anywhere else in the world. Send for our FREE SELL BEFORE YOU START. That's the way to come. And we will help you.

Our lands lie seventeen miles from Twin Falls; three miles from the new town of Hollister, and within three miles of the Nevada Southern Railway, connecting with the main line of the Union Pacific Railway and the Western Pacific Railway at Wells, Nevada, and with the

Our Guaranteed Agreement. We agree to cultivate and care for these orchards for a period of five years in a first class manner, and should any trees die from any cause we agree to replace them. These

F. G. Lessur, President, is well known all over Iowa, Minnesota and Missouri. He is an orchard man of vast experience; his name and fortune is behind this enterprise. J. W. Craven is the owner of the largest stock farm in Southern Idaho. He raises the finest grades of thoroughbred stock. He is vice-president of this company. His name is known to thousands of Missourians. W. H. Thompson, secretary, has been a banker all his life. HE IS THE BEST MAN AT THAT JOB WE COULD GET; thoroughly competent.

**Twin Falls Land & Orchard Co.**  
F. G. LESSUR, President  
**Twin Falls, Idaho.**  
The Snake River Valley.

Cover in 16 colors; printed on the heaviest enameled book; illustrated in two colors; this booklet WHICH WE SEND FREE OF ALL COST is worthy a place on ANYBODY'S LIBRARY TABLE. YOU GET IT FREE. SEND NOW.