

When the Glidden Tourists arrive and when they leave

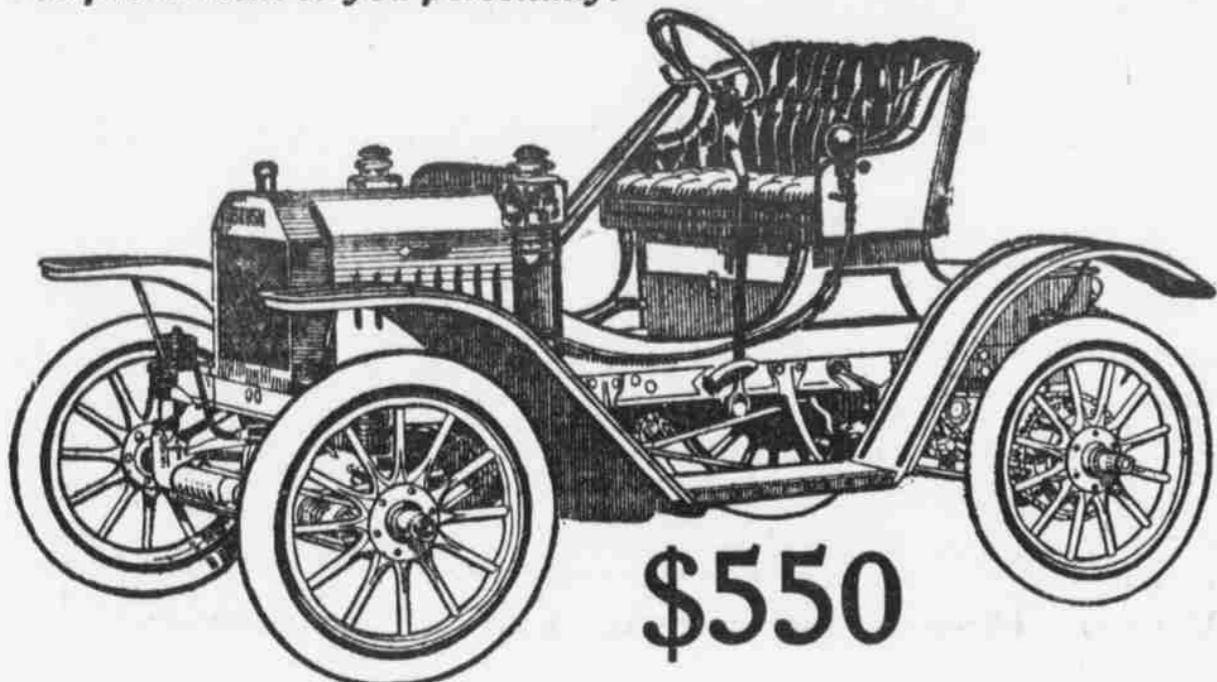
Watch the Little Gray Car with the Black Stripes—and watch it make good every time

It's the \$550 Brush—

the only true Runabout built in America. No automobile in the world compares with it in low cost of maintenance, ease of operation, simplicity and durability.

Please understand the Brush isn't a speed car—speed isn't one of the essentials of a runabout. It is a tried, proven automobile which will carry two passengers and baggage where any motor car will go—one you can maintain for less than half what it costs to keep a horse and buggy.

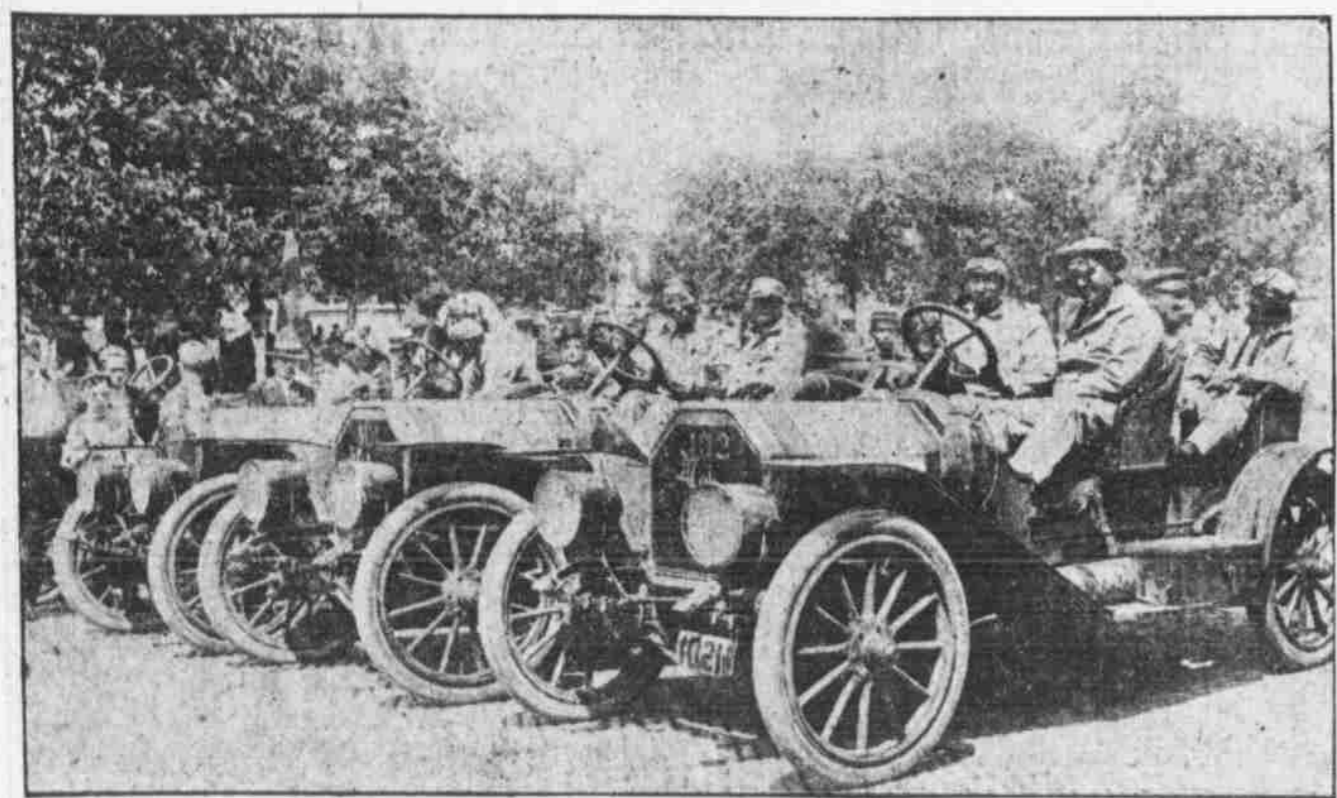
Send for proof of these claims, or better still come in and let us prove them to you personally.



\$550

THE T. G. NORTHWALL CO.,
912 Jones Street, Omaha, Neb.

CONTESTANT IN THE GLIDDEN TOUR.



THE MOLINE TRIO.

HOME ON A MOUNTAIN TOP

Imposing Size and Scenery of Harriman's Country House.

CHARMS OF FOREST AND VALLEY

Thoroughly American in Design and Material—Views of Lakes, Rivers and Mountains—Location and Surroundings.

Friends of E. H. Harriman say that his choice of a country house in the Ramapo mountains of New York appears symbolical of the man; that he likes to be at the top of things, with an extended view around him. His new home is set squarely upon the top of a mountain, and commands an outlook over ranges of hills, shadowy forests and sequestered meadows, through which gleam running waters and the expanse of lakes.

"This new home of Mr. Harriman on Tower Hill is, essentially, a house in the country, and not a country house," said one familiar with all its details. "It is too modern for a country house, and is on the order of a very handsome suburban residence."

Perhaps its most striking feature is its thorough Americanism. From basement to the smallest interior finish everything is a product of this country. This is accord-

ing to Mr. Harriman's expressed wish. Whatever of English architecture has been borrowed in the erection of the house has been Americanized and adapted wholly to its situation and surroundings. It is supremely modern. In it are to be found every modern convenience and every appliance for comfort that this country has produced. Elevators lift one from floor to floor. Even the loggia are fitted with hot-water heating apparatus, and arranged so that they can be inclosed in glass during the winter and serve as sun parlors when the forests blaze scarlet and gold in the autumn.

The house impresses one alike by its massive simplicity and its outlines, which are those of an irregular cross built about a court and flanked by several loggia, the most important and imposing of which is situated upon the western side of the house. The mansion is built over a cellar that has been blasted out of solid rock. Granite taken from this considerable quarry has been used in building the superstructure. The stone is bluish gray, which is, therefore, the color of the Tower Hill house. Indiana limestone has been used as trimming for the whole. Pillars and supports are of gray granite, and the floors are of the handsomest mosaic that American materials could supply and American skill put together.

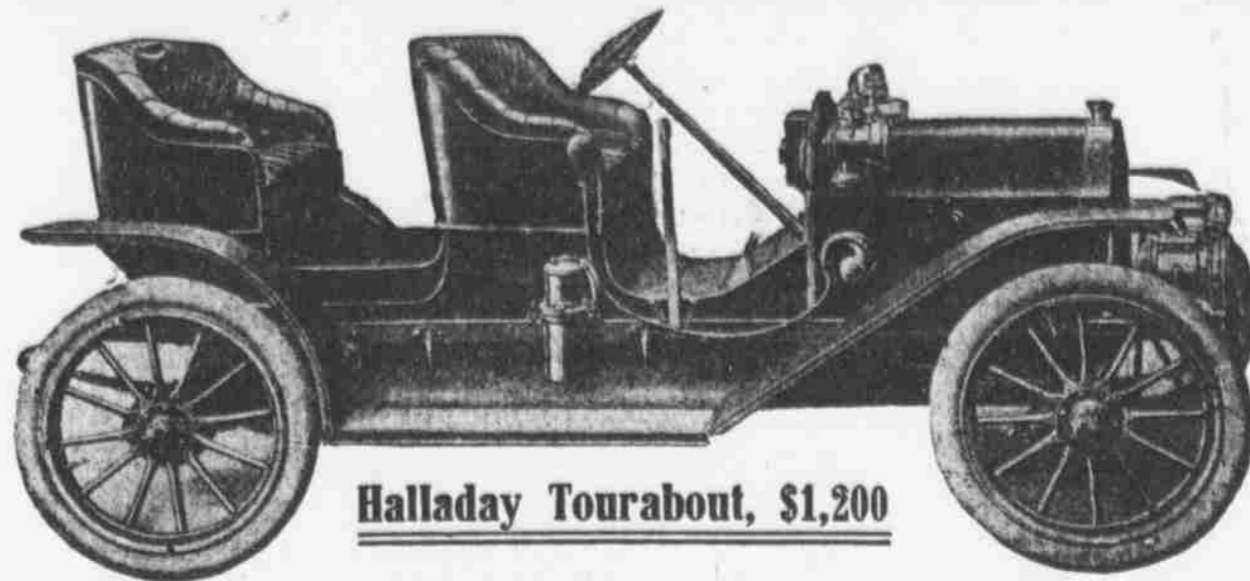
Some Original Ideas. Plans for this home have been perfected under Mr. Harriman's personal supervision and to carry out his own ideas. Many of the things in and about the house are entirely original with him. He insisted that

it should be built to conform to American ideals and that it should contain the most modern appliances for home comfort known to the present day. Speaking of the result so far accomplished, a friend of Mr. Harriman said: "The house is simply magnificent, and magnificent because it is so simple."

The ceilings, particularly those on the lower floor, are high. The latter, indeed, may be better described as lofty. Sculptured figures of a stag and hounds surround the main entrance, which gives access to a great hall arranged as a chapel. Here will be placed a large organ with other accompaniments of worship, and choir galleries will be fitted into the chapel. Leading from this hall to the upper stories will be a grand stairway. The house is constructed so that a basement story rises above the cellar, with two complete stories above that, and an immense attic that really constitutes a fourth story and is fitted with dormer windows under the slate roof.

In the Forest of Arden. All of the windows at the back of the gray granite pile look out upon the clear waters of Forest lake, so named because it lies, like the house, in the heart of the forest. While this woodland is natural it has been improved and forested scientifically under the direction of Clifford Pinchot. For several miles in different directions the land belongs to Mr. Harriman, with Turner as the nearest railroad station, and another at Arden, four miles distant from the new home, which lies nearly midway between the two stations. The house is not situated in the center of the Harriman estate, but off to one side, on the pinnacle of one of the mountains, at an elevation

"Every Day a Halladay for Me"



Halladay Tourabout, \$1,200

This car has been on the market three years. It has stood the test of strenuous service for three years. It has grown more popular every minute of this three years. There is a reason.

In it is incorporated all the improved ideas of modern automobile construction. The elegance and ease and grace found in the big machines are found in it. Features found only in high priced cars are found in it.

The Halladay has made a record.

Everybody likes the Halladay.

It is made in several models and ranges in price from \$1,050 to \$3,600.

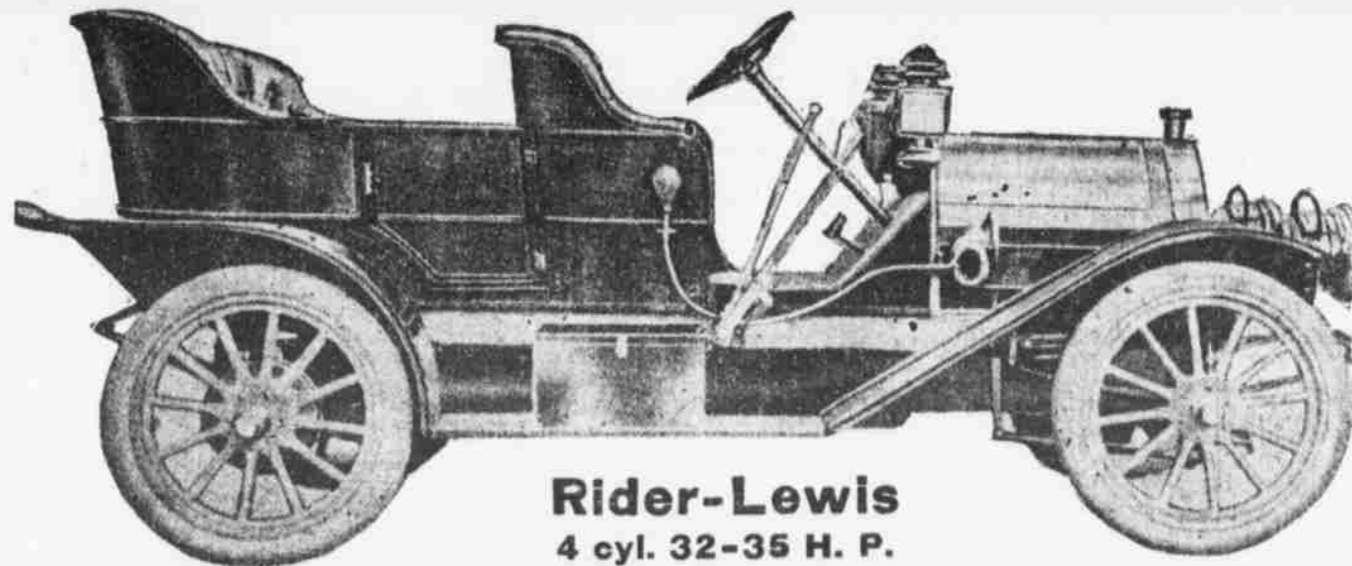
SPECIFICATIONS

Model F. Combination wood and steel construction, four-passenger. With detachable surrey seat. Front seat divided, handsomely upholstered in tufted leather. Rear seat straight pattern, upholstered in tufted leather. Wheel Base: 100 inches. Front: 27 inches. Motor: Four-cylinder, 24 horse power. Cylinders: 3 1/2 x 4 1/2 inches. Motor Control: Spark and throttle on steering wheel. Ignition: High tension, jump spark. Magnet: Option Fawn double system high tension or Bosch high tension single system. Battery: 6 volts, 60 ampere, storage. Coil: Pfanstiel latest improved. Drive: Direct coupled bevel gear. Transmission: Sliding gear integral with differential case on rear axle. Rear Axle: Latest improved construction fitted with Hilt roller bearings. Front Axle: Drop forge I beam pattern, double ball bearings. Rims: Marsh quick detachable, allowing the use of any standard clincher tires. Gasoline Capacity: 15 gallons. Carburetor: Shebler latest pattern. Clutch: Multiple disc, running in oil, insuring smooth contact with ample capacity to hold motor under all conditions. Cooling: Water. Radiator: Latest Briscoe pattern, copper, of ample capacity. Frame: Cold pressed steel, heavily reinforced. Brakes: 10x3 inch, internal expanding, on both wheels. Tires: Model E, 32x3 inch Diamond. Models F and G, 32x3 1/2 inch Diamond. Color: Standard Rubens red. Weight: Model E, 1,600 pounds. Model F, 1,475 pounds. Model G, 1,500 pounds. Equipment: Two side oil lamps and tail lamp. French horn with bulb. Complete tool kit.

AGENTS WANTED AT ONCE

C. F. LOUK
State Agent. 1808 FARNAM STREET

Price and quality considered, these cars have no equal, absolutely.

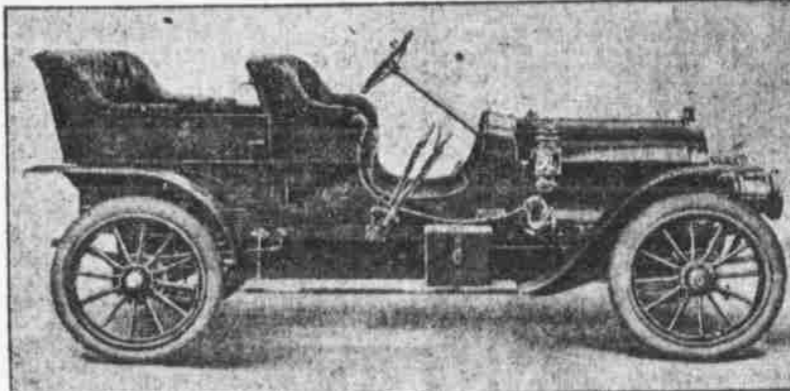


Rider-Lewis
4 cyl. 32-35 H. P.

Weight only 1,700 pounds, costs only \$1,000

This car is a 4-cylinder, touring—accommodates five people—develops from 32 to 35 horse power. Transmission selective, three speeds forward and reverse, is water cooled, magneto included. Drive—straight shaft to rear axle. Has 32-inch by 3 1/2 tire, and 102 wheel base. Brakes, two sets on rear hub drums. Has standard equipment, including side oil and gas lamps, generator, tail light horn, tools and MAGNETO. All for \$1,000

VISITORS TO THE GLIDDEN TOUR—
You are welcome to the home of the AUBURN and the RIDER-LEWIS.



A Demonstration Is Our Strongest Argument.

MODEL B—The business man's family car complete, equipped with Hubsner Motor, conceded to be the best make of 4-cylinder motors on the market. MODEL C—4-cylinder 30 horse power, double Rumble seat, fully equipped. The town car. \$1,350

THE AUBURN

MODEL B—FOUR-CYLINDER, THIRTY HORSE POWER, \$1,400.

MODEL D—4-cylinder, 30 horse power, single Rumble seat. The gent's roadster—built for speed. \$1,300 The popular priced five passenger touring car, 2-cylinder, 24 horse power, for price of the 4-cylinder runabout, single Rumble 24 horse power, at a price \$1,150

OMAHA AUTOMOBILE CO. STATE AGENTS
216 SOUTH 19TH STREET

We are taking orders for early delivery of the Auburn family of Machines.

Agents! If you wish territory, advise us at once. Territory is being taken rapidly. Attractive proposition. Don't delay.

ground that he is having built for his family. This, like the great house which it supplements, has had its foundations blasted out of solid rock. Two and a half acres will be utilized for these grounds, which will have a cement floor inclosed by a concrete wall four feet in height. A covering of earth will be laid over this floor during the summer, and the space devoted to tennis and squash courts, bowling alley, croquet grounds and target range. Arc lights will illuminate the grounds at night, and when winter comes the ground will be flooded and allowed to freeze into a huge skating rink. Although planned for personal use, it is said that Mr. Harriman will give the benefit of these recreation grounds to all those upon the estate—New York Tribune.

C. F. Louk. Here is another Canadian who has come to the west and made good. He has the reputation of being one of the best salesmen in the automobile business. The cars that he brought out, and the cars that he handles now, are demanded by people from all over the state. Recently Louk brought out the Marmon and the Halladay. He has duplicated his orders within 15 days. He handles all of the Marmon models, which have sprung into favor at once here. He handles all of the Halladay cars, which promise to be

one of the medium priced cars to win fame the present season. Council Bluffs Auto Co. This is a new concern in Council Bluffs and one which has become popular since it began business. It has one of the largest garages in the city, is accessible to the business center and within a block of Haystack Park, where the Glidden tour cars are packed. This is the home of the Rambler and Mitchell. B. E. Hierer is proprietor and is a wide-awake, progressive automobile man and from the start he has made will be in due time one of the substantial concerns of Council Bluffs.

Insomnia

"I have been using Cascarets for Insomnia, with which I have been afflicted for twenty years, and I can say that Cascarets have given me more relief than any other remedy I have ever tried. I shall certainly recommend them to my friends as being all that they are represented." Thos. Gillard, Elgin, Ill. Pleasant, Palatable, Potent, Taste Good, Do Good, Never Sicken, Weakens or Gripes. 25c, 50c. Never sold in bulk. The genuine tablet stamped C. C. C. Guaranteed to cure or your money back.