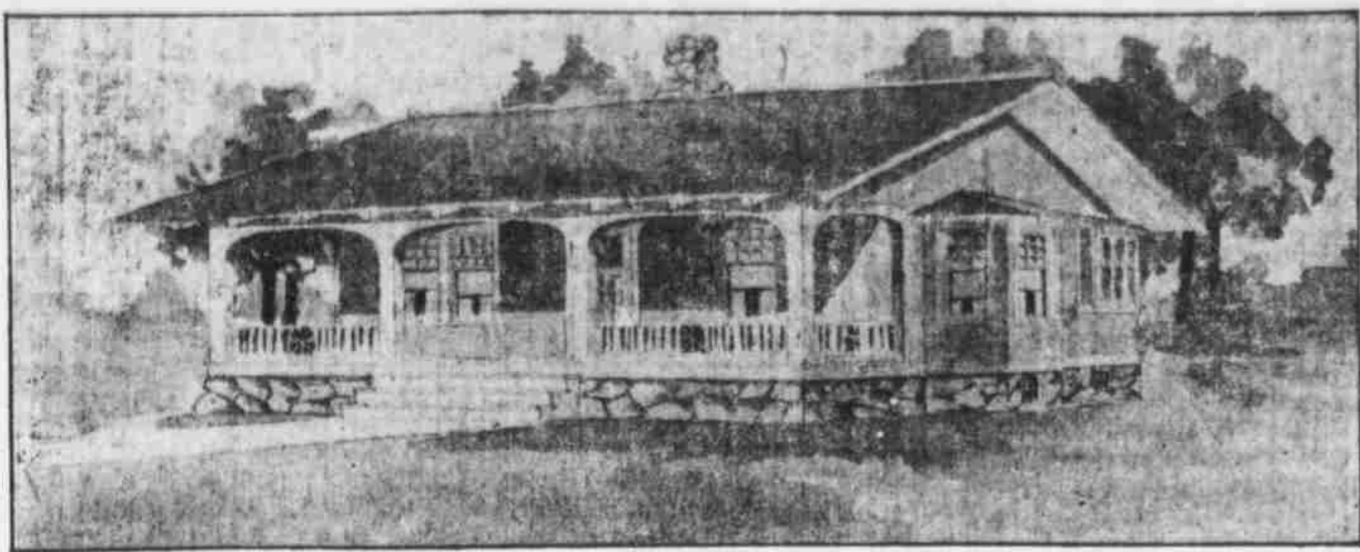
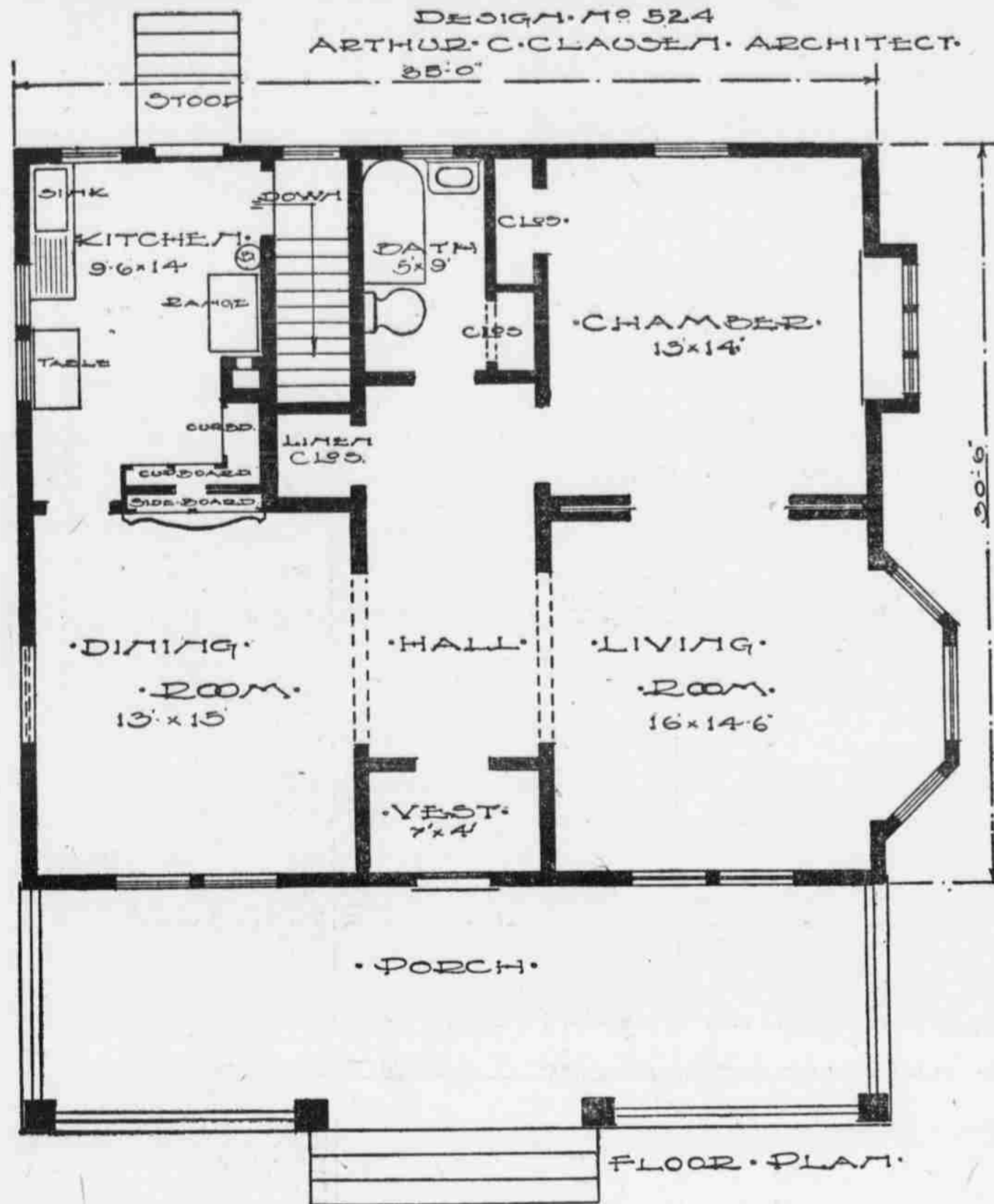


NEWS OF THE BUSY HOME BUILDERS



DESIGN NO 524
ARTHUR C. CLAUSEN, ARCHITECT.
35'-0"



Solving the Home Building Problem

Arthur C. Clausen, Architect.

Note—For several Sundays answers to questions of general interest on home building will be given.

Question—Is a cottage practical for a small home?

Answer—Sentiment and reason both point to the cottage as the ideal American home. Life in a cottage, lived in a simple way, does not mean an aimless life. Lived in almost rustic primitiveness. Simplicity does not mean barrenness, and an ideal cottage home need not lack any of the conveniences and comforts that are an inseparable part of our modern life. "Simplicity is the terminal point of all progress," says Ruskin, to which Charles Wagner adds, "One need not necessarily be rich to give grace and charm to his habitation."

The simplest home to plan, the simplest home to design and build, the simplest to decorate, furnish and live in, is a cottage. Still there are very few complete, well arranged and well designed cottage homes. This deplorable fact is due mainly to two reasons: First, the cottage, because of its popularity, has drifted into the cold calculations of the business world. A great many cottages are built to sell. They are always good sellers. Reduced to a purely business proposition, the cottage suffers much. It lacks the sentiment which provides the many little details and conveniences that are necessary to make it homelike. The second reason is a lack of knowledge on the part of those who build for themselves, of the proper arrangement of the rooms and inability to adapt to their interior arrangement an exterior design that will be in harmony and attractive.

Question—Would a tower look well on a colonial house?

Answer—Don't build a tower on a house unless it be in the English style. Towers and colonial architecture do not mix well. The tower is practically a thing of the past. The object of the tower is to obtain an outlook from the top of it, but when your neighbor's trees cut off all the outlook, it becomes an anomaly. Towers are expensive to build, hard to heat and never look well except in the Tudor Gothic style. This does not exclude the use of angle or compass bays.

Question—What is your opinion of vines on a house?

Answer—Trailing vines can be used ap-

THE BEE'S PLAN OFFER

Mr. Clausen is the author of a well illustrated book containing a great many designs of modern homes, complete plans for which will be furnished to Bee readers at reduced prices. The book is entitled

THE ART, SCIENCE AND SENTIMENT OF HOME BUILDING.

46 Chapters—200 Illustrations.

A beautiful and practical book containing complete information on the planning and designing of every kind of home. It contains extensive articles on that popular style of home, The American Bungalow, also the Two-Story Bungalow, BUNGALOWS BUILT FOR TWO, Homes of Distinctive Character, Planning the Cottage, the Country Home, the Farm Home, Homes for Special Places, The Duplex House, etc. There are extensive illustrated articles on entrances, windows, stairways, fireplaces, porches, kitchens, pantries, cement construction, articles on what not to do in building a home, the Laid-out Contract, the Practical Side of Home Building, the Sentiment of Home Building, etc., etc. Price, post paid to readers of The Bee, 50c. Send all orders to Arthur C. Clausen, architect, Studio, 1011 Lumber Exchange, Minneapolis, Minn.

propriately on several parts of the house, but should never be allowed to completely cover it. Vines should enhance, not hide, the architectural beauty wrought by man.

Question—How can I be sure to select a good lot? Is a lot on the outskirts of the city as desirable as one nearer the business center?

Answer—This must be chosen according to the taste, social station and pocket-book of the owner. If one prefers the suburbs, or even the country, it is a simple matter to find a vacant piece of land suitable for all requirements, but if the convenience of a central city location overbalances the freedom and fresh air of the country place the requirements are not so easily fulfilled. The city lot is apt to be small, often too small to allow the architect much latitude in the way of plans. Then, too, besides the high taxes and fire risk, there is always the possibility of having undesirable neighbors in close proximity to the home.

Question—What is the popular style of roof for a cottage? Is a gambrel roof prac-

tical? Why is it called gambrel?

Answer—The gambrel roof has been the most popular style for a small cottage for several generations. The first examples of this style are found principally in New York and Pennsylvania, it having been very popular with the early Dutch settlers of those states. Its close association with the early Dutch settlers has given it the somewhat misleading name of "Dutch Colonial," many of the details having been borrowed from the colonial styles of New England. The principal characteristic of the gambrel roof is the broken gable, the roof on the lower part of the gables being at a much steeper pitch than the upper part. It derives its name, "gambrel," from the fact that the point made at the intersection of the two slants to the roof resembles the gambrel on a horse's hind leg.

The roof on a cottage of this style has considerable to do with the design. Many a house has been given an awkward appearance through an unsymmetrical proportion of its gambrel gables. There is a certain relation of the upper slant of a gambrel gable to the lower slant. The proportion is not governed by any set rule, but depends upon the designer's judgment and eye for its proportions. Former windows of various styles are used to a large extent in the design of a gambrel roofed house and if properly proportioned to the house and adjoining gables they add considerably to the picturesque quality of it.

Question—Is a duplex house a paying investment? Do they make desirable homes? Does it cost as much to build a duplex as two separate houses? How should a duplex be planned?

Answer—A duplex house, of properly planned, is the combination of all the comforts, conveniences and pleasures of a modern flat and a private home. The plan arrangement in a duplex house is identical to that of a bungalow. That being one reason why they are so popular and, therefore, prove such profitable investments from a purely business standpoint. For have we not, in reality, two bungalows, one above the other, but dividing the expense of the roof, foundation, heating plant and lot between them. In other words, a duplex house will bring as much rent as two separate bungalows, on separate lots, having separate heating plants. The income on the money invested is therefore greater than would be received from the rent of separate houses.

The Overcoated House is the Coming Fashion

By this simple and inexpensive process an old frame house may be made to look like a new stone dwelling and last much longer. It will be more comfortable in winter with less fuel and much cooler in summer.

Apply Expanded Metal Lath and plaster with Cement Mortar, under directions, sent free to any address upon request.

Northwestern Expanded Metal Co.
84 Van Buren Street, Chicago

WESTERN REPRESENTATIVES OF
THE NORTHWESTERN EXPANDED
METAL CO.
C. W. HULL CO.

Carey's Roofing

Tried and Time Tested

A durable light weight roofing for flat or steep surface on Store Buildings, Warehouses, Factories, Barns, Sheds, Farm Buildings, etc. Applied with a liberal guarantee by a responsible concern.

Sunderland Roofing and Supply Co.
1006-8-10 Douglas Street Phons: Doug. 871; A 1225

Beautiful Your Lawns With Our Wire and Iron Fences and Gates.



Trellises for Vines, Tree Guards, Lawn Vases.

Factory 15th and Jackson—617 So. 16th St.
KITCH POSTS, WINDOW GUARDS,
CLOTHES POSTS, CHICKEN FENCE
Send for Catalogue.

CHAMPION FENCE COMPANY

Bee Want Ads Produce Results

The Difference

between borrowing money on a "straight mortgage" and the "monthly payment plan" is vital. If you borrow money on a "straight mortgage" due in five or ten years you worry every day in the year, for every day brings you nearer to the date upon which the mortgage will be due.

If you borrow money from us on our monthly payment plan every day is a day of joy, for as each month goes by your loan becomes smaller and in a few years the home is your own.

Which is the best plan?

Omaha Loan & Building Assn.

S. E. Cor. 16th and Dodge Streets.
Geo. W. Loomis, Pres. G. M. Nattinger, Secy. and Treas.
W. R. Adair, Ass't. Sec'y.
Assets, \$2,500,000.00. Reserve, \$60,000.00.

Fence Your Lawn

BEAUTIFY YOUR HOME. NOTHING ADDS MORE TO YOUR PROPERTY THAN A FINE IRON FENCE. WE MAKE ANY KIND OF FENCE. SEE US FOR DESIGNS AND PRICES. . . .

ANCHOR FENCE CO.

205-7 NORTH 17TH STREET, OMAHA, NEB.



GREEN FURNACES.
"The Kind That Satisfy."
Come in and see a good furnace which is a combination of all the modern features of furnace construction.
A. MURDOCK,
Copper and Sheet Iron Worker. Furnace work of all kinds.
408 South 18th St.
Phones D. 4066. Ind. A-4392.

Call Us by 'Phone

Whenever you want something call 'Phone Douglas 238 and make it known through a Bee Want Ad.

Saves More Than One-Half the Cost

The new incandescent Lamp, called the Tungsten 40 Watt 32 C. P. is offered to every user of electric light at our cost price. Return the old style lamp to us and we will sell you this wonderful lamp at 65 cents. It will pay you to make the investment, because this lamp gives more than double the light and burns less electricity, compared to the old style 16 C. P. lamp. We advise all our customers to make the change at once in the interest of better light and economy.

Call, write, or telephone today.

Omaha Electric Light and Power Company

Y. M. C. A. Bldg. Tel. D. 1062, Ind. A. 1278

ARTISTIC BRICK

BUILD OF BRICK

Select the right Face Brick and you will have a beautiful house. Better investment, better enjoyment and better looking house. Better investment, better enjoyment and better looking house. The latest and best Facing Brick are shown in our display room—150 panels. The price will suit you.

FIREPLACE FITTINGS

We carry a stock of high grade modern, artistic andirons, fire sets, spark guards, grates, etc. Make old fireplaces look up-to-the-minute by putting in new fixtures. Make new fireplaces look right by installing our classy designs. See them. Price them. Buy them.

SUNDERLAND
1614 HARNEY ST.