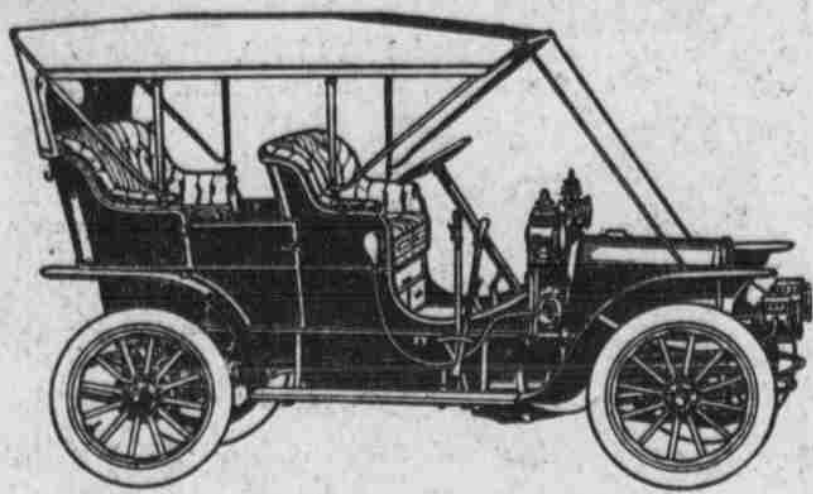


# FRANKLIN



Model G, Touring Car, \$1,850.

## Quality, not pounds, make an automobile high grade and strong and safe

Strength is not a question of weight. It is a question of materials and their proper distribution. This is where skillful engineering comes in. The Franklin laminated wood frame—the highest construction—is both stronger and lighter than the ordinary steel frame. The Franklin tubular axle is stronger and lighter than the solid I-Beam axle commonly used. And so all through the automobile.

Weight is what wears out tires. The light weight of Franklin automobiles makes their tires last longer than those on any other automobile, no matter what it costs.

The Franklin air-cooled motor is neither big nor heavy, but it is the most efficient and effective of automobile engines. Its production of usable power for its size is unparalleled. It does away with the weight and complication of water-cooling apparatus and allows the whole automobile to be refined, simple and unsurpassably strong.

Water-cooled automobiles with not a particle more strength nor carrying ability weigh a third to a half as much more, with all the chronic tire troubles and other worries involved; besides the unreasonable operating expense.

There is no "tire-problem" with Franklin automobiles; no overheating, no leaking, no freezing. You can use any Franklin every day in the year.

Look at any Franklin model inside and out. Ride it on any road. Put it to any test. Compare the performance of the perfect score Franklins with that of the heavy water-cooled machines in the Glidden tour, and the Bretton Woods, the Chicago, the Cleveland and the Worcester endurance runs—the five severest reliability tests in automobiling history. The tire troubles, the overheating and leaking, the broken axles and broken frames were none of them on the light-weight air-cooled Franklins.

Before you buy trouble and useless weight, look into the facts

40 Page De Luxe Catalogue  
NOW READY  
Sent Only on Request

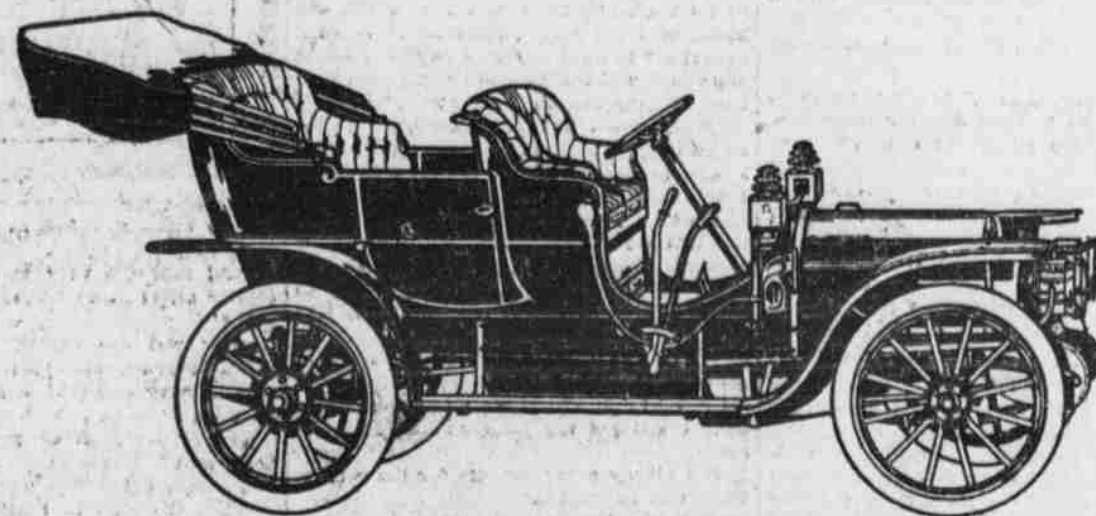
- G 18 H. P. Touring Car .....\$1950
- D 28 H. P. Touring Car .....\$2800
- H 42 H. P. Touring Car .....\$3750
- Runabout, with single or double rumble seat \$1800
- Runabout, with single or double rumble seat \$2700
- Runabout, with single or double rumble seat \$3600
- Broughams, Landanets, Limousines, Town Cars, Motor Cabs.

See Our Exhibit at OMAHA AUTO SHOW Feb. 24 to 27

## GUY L. SMITH

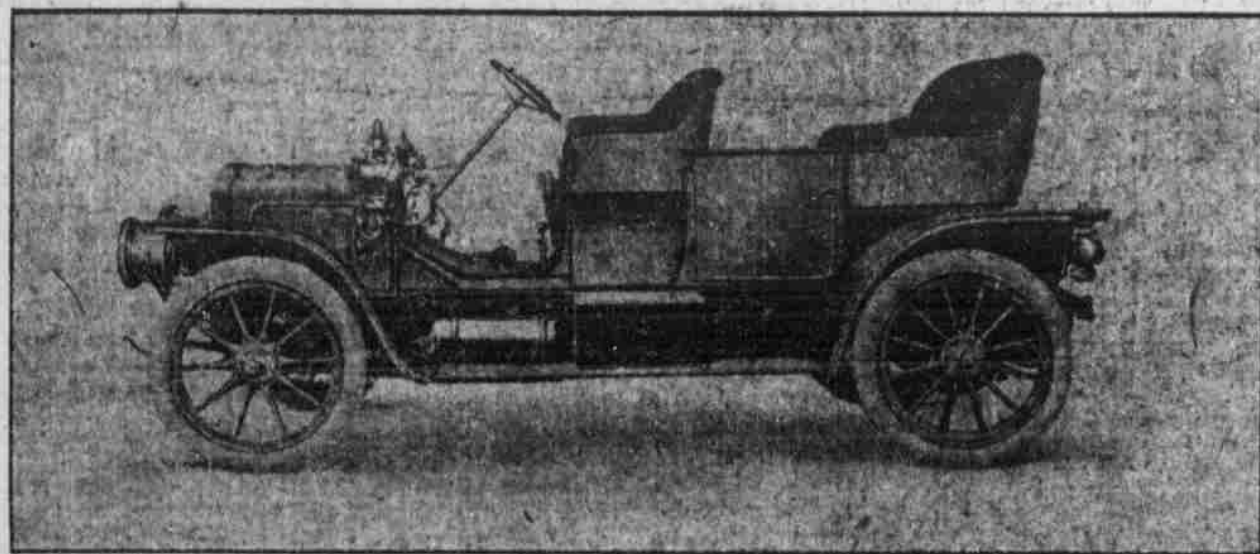
Franklin & Peerless  
MOTOR CARS

310-12 South 19th St. - Phone Doug. 1970



Model D, Touring Car, 4-Cylinder, 28-H. P., \$2,800.

## See the White at the Show



Model "O" 20 Steam Horse-Power, \$2,000

THE White Steamer possesses so many points of superiority over other types of automobiles that any one who purchases a car without first investigating the White is acting with only a partial understanding of the possibilities of automobile construction. We can meet the requirements of almost any pocketbook with our 20 horse-power car at \$2,000. The United States Government, the most discriminating of purchasers, owns more White Steamers than all other makes combined.

We invite you to call at our salesroom and examine our 1909 models :: ::

## DRUMMOND

Salesroom 2024 Farnam St.  
Factory and Repair Shop, 18th & Harney

### Where is the Trouble?

Omaha School of Automobile Engineering Can Show You

Recognized by Omaha Dealers, as the Official School of Nebraska. Devoted to Technical Instructions on a Newer Transportation by Men Who Know.



For Facts and Figures, address  
Omaha School of Automobile Engineering

2418 Leavenworth St., Omaha, Neb.  
PHONES  
Bell, Red 5335; Ind., A-1432.

### THE CAR OF EMPERORS. THE EMPEROR OF CARS. BENZ AUTOMOBILES

as supplied to:  
H. I. M. The Emperor of Germany.  
H. I. M. The Czar of Russia.  
H. R. M. The King of Sweden.  
H. M. The Dowager Queen of Sweden.  
H. R. H. Prince Henry of Prussia.  
H. R. H. The Grand Duke Friedrich of Baden.  
H. R. H. Prince Waldemar of Prussia.  
H. R. H. The Grand Duke of Saxe-Weimar-Eisenach.  
H. R. H. The Grand Duke of Oldenburg.  
H. R. H. The Grand Duke of Mecklenburg-Strelitz.  
H. R. H. Prince Eitel Friedrich of Prussia.  
H. R. H. Prince Leopold of Prussia.  
H. I. H. Princess Wilhelm of Baden.  
H. R. H. The Duke Siegfried of Bavaria.  
H. R. H. Prince Ludwig Ferdinand of Bavaria.  
H. R. H. The Duke of Calabria, Prince of Bourbon.  
H. R. H. The Duke Parma, Prince of Bourbon.  
H. I. H. The Grand Duke Alexis Alexandrovitch of Russia.  
H. R. H. The Crown Prince of Sweden. And some 60 other Imperial and Royal Fairness.

The world famous Benz Autos are now imported into the United States by the Benz Auto Import Co., and fully descriptive printed matter is now ready.

Four Models:  
18-22 H. P., 22-30 H. P., 40-45 H. P., and 60-65 H. P.

Carl Benz was the inventor of automobiles. The German Emperor has four Benz cars. The Czar of Russia has two Benz cars. Prince Henry of Prussia has seven.

Write for 1909 Literature.

BENZ AUTO IMPORT CO. OF AMERICA  
1200 Broadway, New York.  
(Say you saw the advt. in "Omaha Bee.")

THERE ARE OTHER LOW-PRICED CARS ON THE MARKET

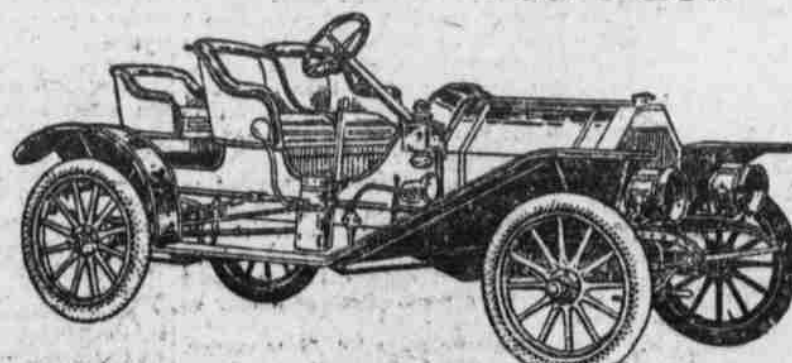
## OVERLAND

BUT COMPARE THEM WITH AN OVERLAND

The Biggest Automobile Sensation of the Year

\$1400 Only Pedals to Push

- 4-cylinder
- 30 H. P.,
- Cylinders Cast Singly.
- Double System of Ignition, with
- High Tension Magneto.
- Shaft Drive.



- 110-in. Wheel Base.
- Internal Expanding and External Contracting Brakes on Hubs.
- Tires 34x3 1/2.
- Goodyear A. D. Rims.
- Spring—Half Elliptic Front, Full Elliptic Rear.

EQUIPMENT—Five lamps, generator and horn, full tool-kit, all bodies ironed for tops. THE OVERLAND for 1909 is the result of six years' steady growth. For power, reliability, appearance and price there is not a car on the market that compares with it. We shall exhibit at the Omaha Automobile Show February 24 to 27. Come and make our booth your headquarters.

HENRY H. VAN BRUNT, General Agent  
Council Bluffs, Iowa

## AUTOMOBILE VISITORS

### should not fail to visit Rome's Vineyard.

HOTEL ROME  
EUROPEAN



Corner 16th & Jackson Sts.

A most novel dining place for ladies and gentlemen who thoroughly enjoy good eating and good service.

THE MILLARD HOTEL  
American Plan—\$2.00  
Corner 13th and Douglas Streets.  
Under Same Management.  
ROME MILLER

## THE HOLSMAN

IS THE Original High Wheel Automobile  
Seventh Year of Manufacture.

High wheels travel all roads because all roads are made to be traveled by high wheels.

SIX MODELS; Prices \$500 to \$1,000.  
HOLSMAN 1,000 pound DELIVERY WAGON, \$650.00.

Two or Four Cylinder Engine, interchangeable.

Live dealers wanted. Write for territory and terms.

## BRICK P. KUHN,

Space A2 Auto Show  
1812 Harney St., Opp. Library, Omaha, Neb.