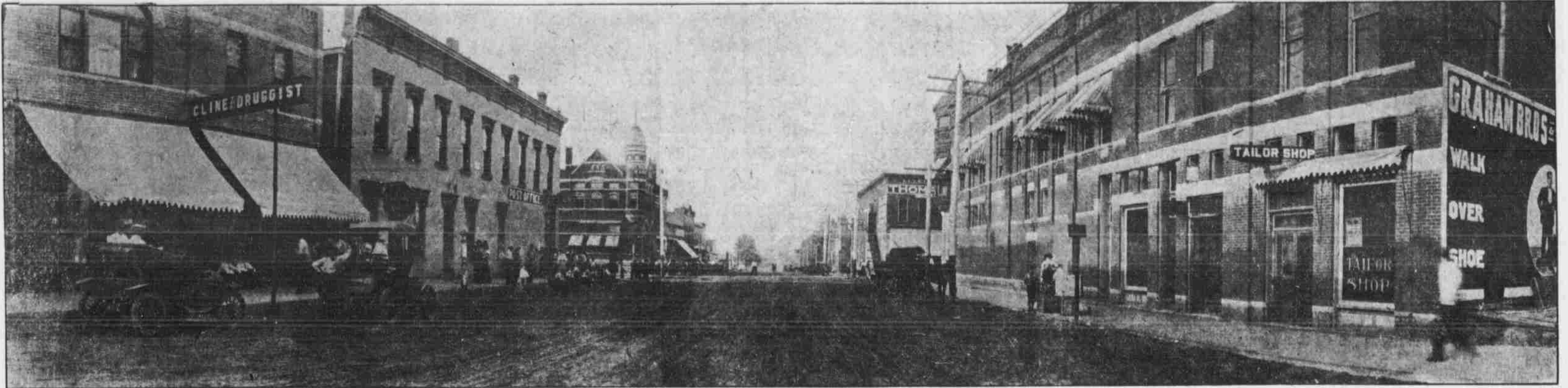


NEMAHA COUNTY AN ATTRACTIVELY PROSPEROUS EMPIRE

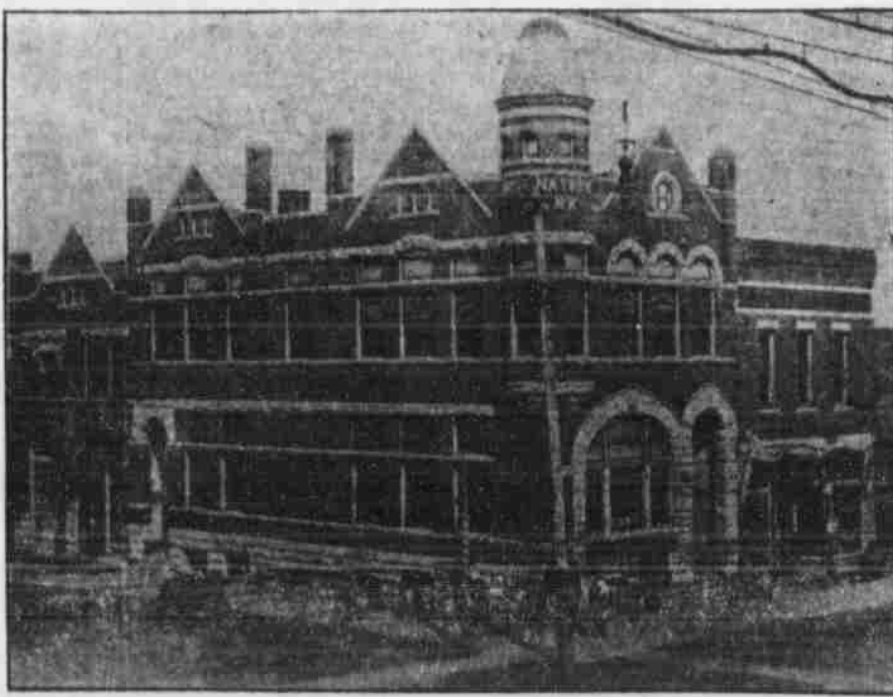
Auburn, Its County Seat, the Home of Cultured People Who Are Interested in the Advancement of Agriculture and Its Allied Industries, as Well as the Refinements of Modern Life



VIEW OF MAIN STREET, AUBURN, NEB.



PRESBYTERIAN CHURCH AT AUBURN.



FIRST NATIONAL BANK BUILDING, AUBURN.

YOU cannot study this region long, you cannot spend many days on the streets of Auburn, you can meet and mingle with its people without being impressed with the universal belief in it by the citizens themselves that live there. It crops out in their daily conversation, it shows itself in their actions. They have planted their lives on it, and this feeling is not mere local pride, such as you will find almost everywhere.

This spirit is an important part of the resources of Auburn and eastern Nebraska. It makes men broader. It makes them better neighbors and associates, better citizens. The surprise that a stranger finds in the life of Auburn is that the struggle for financial success is not as fierce as it has usually been in our young cities of the middle west.

They are prosperous because of the rich prairie soil, because of the ever richer wheat field, because of the immense corn crop, because of the large amount of beef and pork. Very nearly every form of wealth produced is near by. The prairie has taught them to take conditions as they find them and make them pay. They make money more easily than they save it. Nature's broad lines all about the Nebraska citizen makes him careless, open-hearted and optimistic. They laugh when they win because success, in a successful country need not be taken too seriously. They laugh also when they fail, because failure amid so many opportunities is ludicrous. They sometimes meet their social obligations in their wives' names. Their freedom is that of plenty, their conceit grows out of their achievement.

An Agricultural Country

Nemaha county is strictly an agricultural section. Live stock and grain are its principal resources. It is comparatively a small county, as it has but a little over 200,000 acres, with 120,000 under cultivation. But it is the largest little county in the state. Last year it sold and shipped out 8,200 beef cattle, 35,000 fat hogs, 600 well bred horses and 1,800 fat sheep. The dairy industry is fast gaining in favor with the farmer, as there are now 225 cream separators in active use.

Nemaha county has several good, thrifty, wide-awake towns. Among these is Peru, where the State Normal school is located. This is one of the institutions that Nebraska can well afford to be proud of. This thrifty little city has a population of 1,500 and is surrounded by some of the best farms and farming country in Nebraska. Johnson, another good town of 1,200 population, is located in the western part of the county. Nemaha boasts of 1,000 people, who are strictly alive to the best interests of their town. The village of Brock has about 700 and Julian 500, both located in the northern part of the county, and both are surrounded by rich farms and prosperous, progressive farmers.

Brownsville is full of history and great content. It is one of the old landmarks of the early pioneers. The city itself relies for its attraction on its early history and its surrounding country. It can show little of commercial interest. It is a city of homes and is quiet with a feeling of a perpetual afternoon.

Go where one will in or around Brownsville, here and

there will be found some of the grizzled mementoes of the old days. Perhaps you may find him engaged in a social game of cards, or discussing the early steamboat days—a man with a wide slouch hat, a splendid gray beard and a look of prosperity. In common with all Saxon frontiersmen, the old pioneer is a man misplaced in these times, but in his day he was the true representative of that sturdy valor which is now decaying in wealth and luxury. There will be no more of him while the world stands and his name on the prairie he first tilled with his toil is overwhelmed in modern wonder.

People of the Towns

In this county one finds a curious arrangement of classes. The towns are settled by men whose deeds of daring would make complete novels of reckless adventure. While beside the old frontier characters are found the mildest of tenderfeet, the most polished college graduate and the shrewdest business man. The country around Brownsville is especially adapted to growing fruit, and it is here that the best strawberries in the state are grown. The reception given by the people of Brownsville at their annual Home Coming is one of the most enjoyable events held anywhere in the entire state.

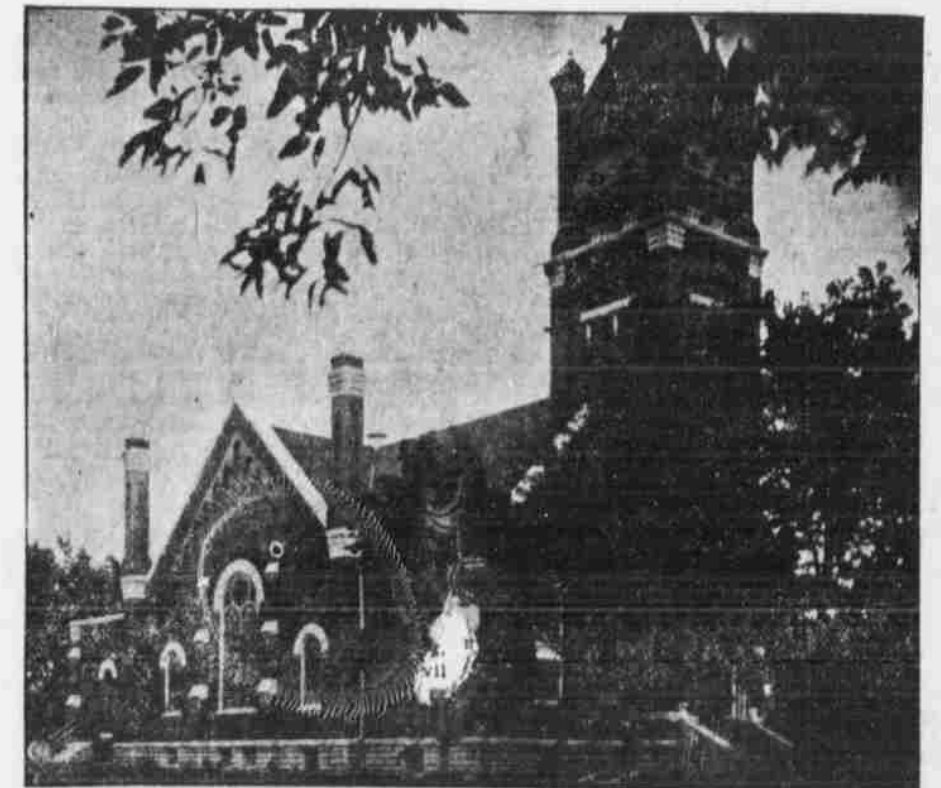
Auburn is the county seat of Nemaha county; it has a population of 4,000, with a good canning factory, a flouring mill that serves a large section of country, and some of the modern improvements of city life. But this little city has more than this, it has a Commercial club that is active, energetic and ever on the alert for the best interests of the city. Good roads sentiment is becoming somewhat strong around Auburn. It is not wise for us to fix our eyes on the railroad and consider it the sum of all transportation. Only second to it are the wagon roads. The Romans, for military purposes, built through specially selected districts roads which endure today, and the ever accompanying result was the rapid settlement of these districts. The railroad is not the whole thing. Get together, my countrymen, and mend your ways; be Romans, make your roads everlastingly good.

Two Vivid Facts

The stranger visiting this region will carry in his mind for the rest of his life two facts: First, the resourcefulness of the county and the firm faith in its rapid development into wealth; and, second, an admiration of the public spirit of the people who thus work together sensibly for the growth of their community. This kind of activity makes a new kind of citizen. It gives everybody an interest in the welfare of everybody else. The strongest impression made on one's mind by visiting and traveling over this county is the effectiveness of these people as builders of cities, of towns, of communities. They have local jealousies. They have grievances against the railroads. In a word, they are human, but every city, village and farming district has the same mind about bringing new men, business men and manufacturers, to help in the common task of developing. This public spirit and this temper of helpfulness attracts good men, and makes men good.



AUBURN RESIDENCE OF MAJOR CHURCH HOWE, UNITED STATES CONSUL GENERAL AT MANCHESTER, ENGLAND.



CATHOLIC CHURCH AT AUBURN.



FALL PLOWING IN NEMAHA COUNTY.



SHEEP ON PASTURE IN NEMAHA COUNTY.