

FOR PLEASURE

FOR HEALTH



Go to Colorado

Any Day \$17.50 Round Trip

Wonderful Mountain Scenes
Beautiful Lakes
Abundant Fishing

Also Low Rates to Wyoming Fishing Resorts and Camping Grounds and Yellowstone National Park

Natural Mineral Springs
Unsurpassed Climate
Excellent Hotels

via UNION PACIFIC, the Popular Route to All Western Points.

TWO THROUGH TRAINS DAILY LEAVING AT CONVENIENT HOURS.

For Booklets and Full Information Write to or Inquire at Union Pacific City Ticket Office, 1524 Farnam Street, or Telephone Douglas 334.



TIMELY REAL ESTATE TALK

Opening Twenty-Fourth Streets Means Much Just at Present.

ONE CROSS-TOWN THOROUGHFARE

Ordinance Passed by City Council Will Give Longest Street in Omaha and May Change Some Established Institutions.

The question of opening Twenty-fourth street in the neighborhood of Creighton university, thus making that street the longest thoroughfare in the city, bids fair to be settled after an agitation of ten years. An ordinance opening the street from California to Burt has been passed by the city council and awaits the signature of the mayor.

North Sixteenth street are giving way to the fine Cohn building.

A full in downtown business property has been one of the characteristics of the hot season. Only one transaction in property of this description, as far as the public knows, was made last week. It was the sale of the Bolles & Rogers hide house on South Thirtieth street to Duncan B. McDonald, formerly local manager for Bolles & Rogers.

Out in Dundee houses are going up in bunches, just as they are in Omaha. It is no uncommon sight to see three or four new residences in course of construction on one block.

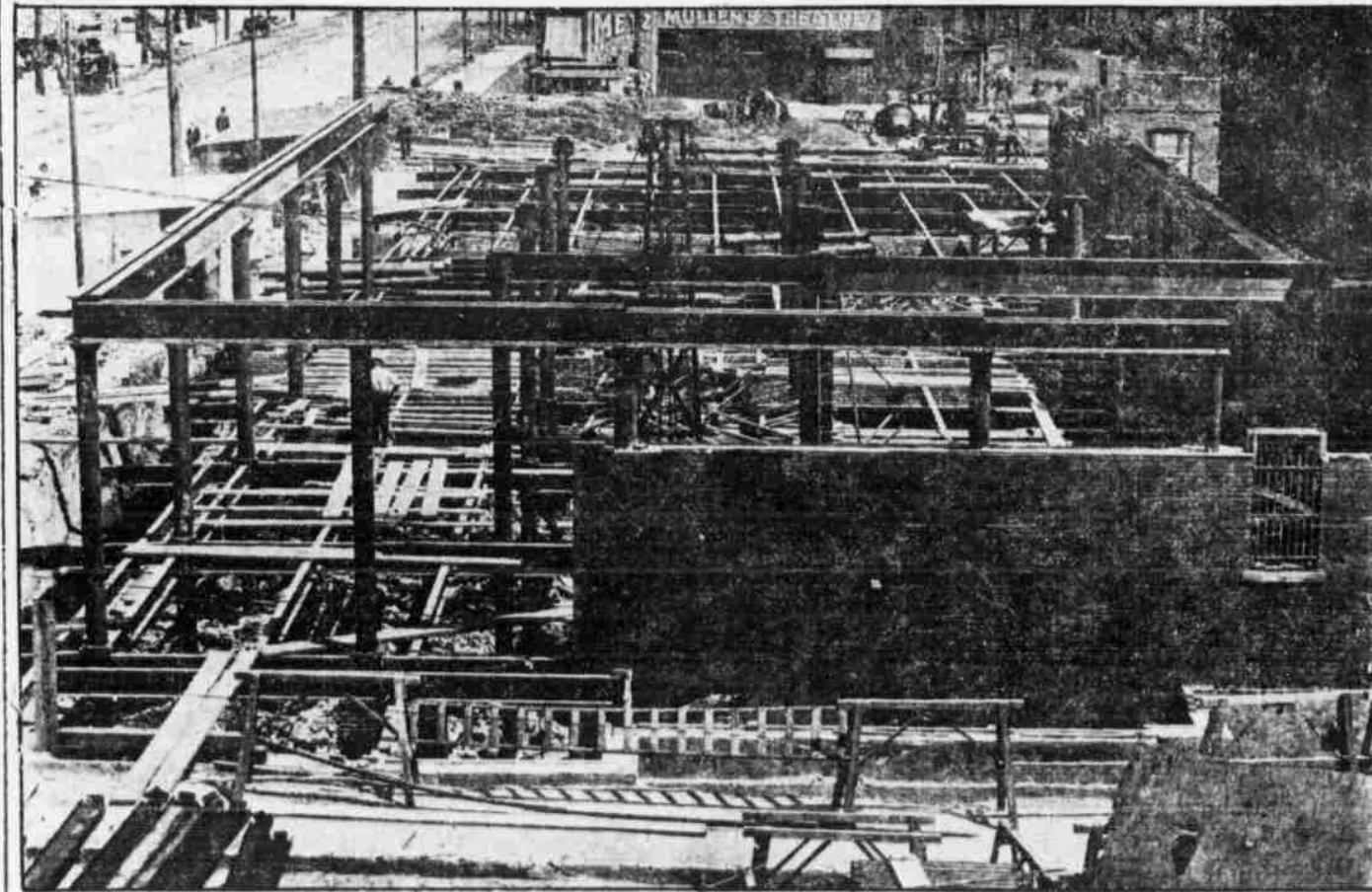
This week will see several changes in office location among the realty men. J. H. Dumont & Son will move from their offices on the ninth floor of the New York Life building to the Board of Trade building.

St. Paul, Minn., is among the latest cities to begin an extensive advertisement of its industries and its advantages as a residence city. A fund of \$25,000 is being raised for the purpose of carrying on the campaign, and heavy real estate holders are contributing largely.

People moving to Omaha for an indefinite period don't rent very long; they buy or build homes. They readily recognize the fact that Omaha really is a good investment, and if they have any money they decide to make it earn more, instead of paying it out in rent.

Really men who read last week of the establishment at Bloomfield's, in New York City, of a real estate department for the sale of high-grade restricted home sites at very reasonable prices are wondering heaven there is yet one thing in Omaha

Start on Framework of a Fine Building



HOW WORK IS PROGRESSING ON THE NEW KAHN BLOCK.

the department stores are not handling. Bloomfield's offers lots at \$50 each, "on a remarkably easy payment plan." Free transportation is offered to purchasers, and on certain days a special reduction of 5 per cent is made to all buyers.

That Omaha is gradually spreading out over more territory as well as building up within its present limits is apparent to one who takes a car ride to the end of the line, whether it be north, south or west. For instance, take the car to Krug park. You see new houses all along the way, and when you get out on Military avenue, out in the edge of the country, you see them almost as numerous as when you were closer town.

Judging from the reports of local men who do a brokerage business in lands, Omaha people who have money to invest outside of city real estate are putting it into Nebraska farms and ranches. Speaking of the purchase of Charles D. Beaton of a half section of land in Banner county, a local agent said: "That man has the right idea. He doesn't want a ranch in some state 100 miles away; he wants one where he can get to it occasionally and see what is going on. A good many other people of this city and other eastern Nebraska towns think the same thing and are investing their money in good black Ne-

braska soil. I know of no place which affords greater possibilities of development than the western half of this state."

The attention of the Board of County commissioners will also be claimed briefly by the Real Estate exchange, which will say to the board that many streets and alleys in additions just outside the city limits should be kept open, where now citizens are allowed to close and use them as private property.

It was whispered that the real estate men would discuss billboards at the last meeting of the exchange, but nothing came of the prophecy. The matter is slated for this week's meeting of the body, and whether or not an intensely spirited discussion will arise depends largely on what action the council takes Tuesday on billboard ordinances now before it.

Hastings & Heyden report the following sales since July 1: Two lots in Curtis & Stone's addition, west of Miller park, to John McCallister; lot on Brown street, between Twenty-fourth and Twenty-fifth streets, to Mabel D. Lundberg; lot in Kountze Place on Lothrop street, between Nineteenth and Twentieth streets, to Mrs. B. F. Weeks; lot on Brown street, between Twenty-fourth and Twenty-fifth streets, to Frank H. Foley; new house on Ames avenue, between Nineteenth and Twentieth streets, to Fred T. Anderson for a home; lot in Kountze Place on Sher-

man avenue, just south of Binney street, to R. A. Thompson; large corner lot in Kountze Place, being the northwest corner of Eighteenth and Spencer streets, to A. N. Eaton, proprietor of Nebraska Steel and Tank company; lot in Sulphur Springs addition on Sherman avenue, between Lothrop and Emmet streets, to C. A. Printz, on which a home will be built at once; one-acre lot in Belvedere, just west of Miller park, to Mrs. Emma Willetts; lot in Curtis & Stone's addition, just west of Miller park, to Charles E. Gard, house on North Twenty-sixth street, south of Ames avenue, to Anna Aukland; two lots in Dundee, corner Forty-eighth and California streets, to A. B. Wells; lot in Kountze Place on Spencer street, between Nineteenth and Twentieth streets, to Sam F. Board; lot in Burr View addition, corner of Fourteenth avenue and Pinkney street, to R. L. Kenny, on which a new brick house is being built; house, 4314 North Twenty-sixth street, to Mrs. Emma Craven; two lots on Brown street, between Twenty-fourth and Twenty-fifth streets, to L. W. Herring; lot in Collier Place on Ames avenue, between Thirtieth and Thirty-first streets, to L. N. Sineit; house and lot in Summit addition on Spring street, between Twenty-ninth and Thirtieth streets, to John Belitz; lot on Twenty-fifth avenue, between Fort and Jaynes, to Harry C. Harris; lot on Taylor street, between Fort and Jaynes streets, to Louise Haefner; contract to build a four-room cottage for Mrs. Deyoe on Maple street, between Twenty-seventh and Twenty-eighth streets; business lot in Kountze Place on Sherman avenue, between Locust and Binney streets, to J. H. Saltberry; lot in Curtis & Stone's addition, just west of Miller park, to D. J. Trail; two lots in Central Park addition, between Thirty-eighth and Brown streets, to M. H. Putney, on which a new house

ENGINEER NOT SATISFIED

Says Paving Operations Should Proceed with More Dispatch.

WORK NOW AT HEIGHT FOR YEAR

Barber Company is Criticized for Delay of Important Paving on Farnam Street and Promises to Improve.

Paving operations have about reached the maximum for the year in Omaha, but the progress is not satisfactory to the engineer's department. The officials of this department are particularly anxious to have the work on Farnam street finished as rapidly as possible and the assertion is made that the Barber Asphalt company, which is doing the work, is delaying matters in a way which will require explanations. The company promises to begin to lay asphalt next week.

This company is also at work on Fortieth street between Dodge and Davenport streets. The street car company has its tracks practically completed to Dodge street and the street is being graded. It is thought this work will be completed by August 10. Charles Fanning is rushing work on the two contracts he recently secured from the city. Concrete is laid on South Twentieth street from Leavenworth to Pierce streets, and the setting of curbs on South Twenty-second street between Pacific and Mason streets will begin next week.

COUNCIL BALKS ON THE PLAT

Refuses to Approve Layout of Lots Touching Cut-Off Lake Park.

A certain real estate promoter is in doubt as to whether he will sell lots in Omaha next week. A short time ago he came to the city and made arrangements to plat a new addition, which was to have included what is now known as Barker's subdivision, an addition to the city lying along Ames avenue, near the western shore of Cut-Off lake, and to have also included part of a tax lot lying just east of the subdivision. Before this plat had been officially known to the city authorities the Board of Park Commissioners outlined a plan for Cut-Off lake park, and this plan included a boulevard extending along Ames avenue, just south of the tax lot. At the eastern edge of the lot it turns north along the line of Thirtieth street, extended, and thence runs north of the lake. The scheme also contemplated the appropriation of about forty feet of the south part of the tax lot.

CHICAGO GRAIN MEN ARE SORE

Raise Howl at Alleged Loss of Some Unfair Advantage They Possessed.

Chicago grain interests are objecting to the ruling of the Interstate Commerce commission that shipments in transit shall not carry the proportional rates beyond transit points at the time of shipment, but instead move as through shipments at the through rate in effect from starting points at the time of original shipment. The Missouri river grain men do not join in the avvil chorus, but are clapping their hands in glee. Of course the Chicago men don't like the ruling, they say, for it robs them of some of the advantages they have had over Omaha and Kansas City. Omaha men were most active in the fight to secure the ruling, and it is natural they should be pleased. The Chicago grain kings can no longer store millions of bushels of grain in transit at Omaha, and then have a special rate east made on it, a concession the Omaha men could not secure from the railroads.

WRECK ON ALLEGHENY ROAD

Three Were Killed and Score Injured in Smashup Near Butler, Pa.

BREVITY IS THE SOUL

In a Tennessee court an old colored woman was put on the witness stand to tell what she knew about the annihilation of a hog by a railway locomotive.

Being sworn, she was asked if she had seen the train kill the hog in question. "Then," said counsel, "tell the court in as few words as possible just how it occurred." "Ye honor," responded the old lady, "I shore kin tell yo' in a few words. I jus' tooted an' tuck him."—Success Magazine.

It was a Tennessee court an old colored woman was put on the witness stand to tell what she knew about the annihilation of a hog by a railway locomotive. Being sworn, she was asked if she had seen the train kill the hog in question. "Then," said counsel, "tell the court in as few words as possible just how it occurred." "Ye honor," responded the old lady, "I shore kin tell yo' in a few words. I jus' tooted an' tuck him."—Success Magazine.

WRECK ON ALLEGHENY ROAD

Three Were Killed and Score Injured in Smashup Near Butler, Pa.

KILLER. Pa., July 25.—Three were killed and a score injured in a wreck on the Allegheny & Western railroad near this city today. The wreck was caused by a rail breaking beneath an engine drawing a heavy train of pickers, who were employed on the Buffalo, Rochester & Pittsburgh road, on their way from Dubois to Newcastle. There were 40 or 60 on the train.