



# KNABE

## "THE WORLD'S BEST"

THE KNABE piano has been conspicuous because of its being the leader in the art world three-quarters of a century.

THE KNABE is a high-grade instrument, whose artistic characteristics have lifted them into a world prominence.

THE KNABE is noted for the peculiar resonance and power of tone.

THE KNABE is marked by the charm of their elegance and taste.

Musicians and the critics expect and get in THE KNABE an elastic, responsive and agreeable touch, the maximum of tone duration, a powerful sonorosity and a scale of evenness and consecutive sequence.

We are Special Agents and Distributors for Nebraska and Portions of Iowa.

# HAYDEN BROS.

'Phone Douglas 2600.

Douglas Street Entrance

# A MOST SUCCESSFUL CLEARANCE SALE

The wonderful popularity of Hartman's clearance movement has been forcibly demonstrated in the past week's interesting sale. As the knowledge of the merit of this event becomes more generally known the sale increases in enthusiasm. People who have learned of the genuineness of the values spread the good news, until now it is by far the most talked of sale in progress in Omaha. Generous credit as usual.

## Davenport Sofa Beds

	Reg. Price	Sale Price
Handsome Sofa Beds, quartered sawed oak frames	\$40.00	\$26.75
Automatic Davenport Sofa Bed	20.00	25.50
Extra elaborate Davenport Sofa Beds	29.00	35.50



## Chairs and Rockers

	Reg. Price	Sale Price
Solid Oak Morris Chair	\$10.25	\$ 6.75
Solid Oak Rocker	4.25	2.49
Handsome Rattan Rocker	5.25	4.15
Wood Seat Dining Chair	1.25	.95
Dining Chair, brace arm	1.50	1.10
Elegant Dining Chair	2.75	1.75

## Center Tables

	Reg. Price	Sale Price
Handsome Center Tables	\$ 1.50	\$ 1.15
Center Table, solid oak	2.50	1.25
Center Table, 24-inch top	4.25	2.75
Center Tables, extra large and massive	6.75	3.75

## Dressing Tables

	Reg. Price	Sale Price
Handsome Dressing Tables, solid oak	\$12.00	\$ 8.75
Dressing Tables, solid oak bird's-eye maple or mahogany	26.00	15.50

## Gen. Leather Couches

	Reg. Price	Sale Price
Guaranteed Couches, genuine leather cover	\$37.45	\$21.50
Genuine leather couches	30.00	21.75
Extra massive genuine leather Couches	48.00	27.75

## Dressers

	Reg. Price	Sale Price
Handsome Dressers, beveled mirrors	\$12.00	\$ 6.95
Elegant Solid Oak Dressers	22.00	13.75
Extra elaborate Solid Oak Dresser	22.00	18.75
Bird's-eye Maple or Mahogany Veneer Dresser	40.00	23.50

## Chiffoniers

	Reg. Price	Sale Price
Chiffoniers, fancy designs	\$ 8.00	5.75
Chiffoniers, large beveled mirrors	12.00	7.75
Chiffoniers, solid oak or mahogany finish	20.00	12.50
Chiffoniers, solid oak or mahogany finish	27.00	17.50

## Hartman's Saturday Sale Special



**WINDSOR SERVING TRAY**  
This Serving Tray is of large size, measuring 12 in. in diameter. It is made of heavy nickle-plated and extra heavily plated. The design of this tray is very beautiful, having a very handsome engraved pattern inside, deep scalloped edge and beaded circles. These trays will be placed on sale tomorrow at 1 o'clock and are offered at the extremely low price of only 10c.

## Velour Couches

	Reg. Price	Sale Price
Handsome Couches, Imported Velour coverings	\$10.00	\$ 6.75
Massive Velour Couches, tufted	17.00	9.75
Extra Massive Couches, tufted, imported coverings	19.50	11.50

## Room Size Rugs, 11x9 ft., \$10.95 Value



## Rugs and Carpets Greatly Reduced

	Reg. Price	Sale Price
Alexminster Rugs, 8x12 ft.	\$22.75	\$21.25
Wilton Velvet Rugs, 8 ft. x 10 ft. 6 in.	32.25	22.50
Excellent quality "Wilton" Velvet Rug, 8x12	32.25	24.75
Extra fine Brussels Rugs, 2 ft. x 4 ft. x 4 ft. 6 in.	2.50	1.37
Alexminster Rugs, 2 ft. x 4 ft. x 4 ft. 6 in.	4.50	2.25

## Carpets—Big Values

	Reg. Price	Sale Price
Ingrain Carpet	\$ 45	\$ 31
Wool filled Ingrain Carpet	55	45
Extra fine Brussels Carpet	55	45
Handsome Velvet Carpet	1.45	1.10
Olefinets, linoleum and matting cut in price to clear out all remaining spring patterns.		

## Go-Carts

	Reg. Price	Sale Price
Every Go-Cart in Our Immense Stock Cut in Price From One-Third to One-Half		
Folding Go-Carts, frame of seamless bicycle tubing, extra strong, very light	\$ 3.50	\$ 2.25
Folding Go-Carts	3.50	2.45
Elegant Folding Go-Carts	14.50	8.75
Finest Folding Go-Carts	19.25	11.50

## Library Tables

	Reg. Price	Sale Price
Solid Oak Library Table, polished	\$15.75	\$ 9.75
Solid Oak Library Table, extra handsome design	24.50	14.75
Elegant Library Tables, extra handsome design	32.00	19.25
Extra Large Library Tables	35.00	24.75

## COAL PILES MOUNTAIN HIGH

Union Pacific Prepares for Possible Fuel Famine.

## HALF A MILLION TONS STORED

General Manager Mohler Says His Line Will Be Kept Running During the Winter in Spite of Shortage.

"The Union Pacific now has 212,000 tons of coal stored, most of which came from the mines of Illinois, Missouri, Kansas and Colorado, and only part of the Wyoming division is supplied by our mines," said General Manager Mohler of the Union Pacific Friday morning.

## West Wants Coal

"The tremendous demand for coal by the country west of Green River, dependent upon the Union Pacific mines for its supply, makes the movement of coal to points east of Green River, to any large extent, absolutely impossible," added Mr. Mohler.

"We are granting a number of requests to outsiders for tracks to coal mines in Wyoming and Colorado, but such work is slow, and represents a large amount of money and time before its effects will be felt. Money in this respect has heretofore been spent in Wyoming, and the lands found coalless and the projects abandoned.

## FAIRBANKS-MORSE WILL BUILD

Another Big Warehouse Decided On for the New Omaha Jobbing District.

All doubt as to the erection of a large home by Fairbanks, Morse & Co., has been dispelled by the announcement of Fisher & Lawrie, that they have been instructed from the company's home office at Chicago to proceed with the plans.

The building will be six stories in height, sixty-six feet in width by 132 feet in length, and will cost approximately \$70,000, says Mr. Lawrie. It will be at the northwest corner of Ninth and Harney, with Union Pacific tracks on the east and Burlington tracks on the north. It will be built of vitrified paving brick of dark blue color; the tone of the brick and plainness of detail being calculated to lend distinction among the other large structures of the neighborhood.

## HARD STONE IS COMING UP

Contractors for Macadam Agree to Furnish No More Poor Material to the County.

As a result of their trip to the Nehawka quarries Thursday the members of the county board have secured a promise that no more soft stone will be sent to Omaha for use on the county roads that are being macadamized. The commissioners were well pleased with the quality of rock in general at the quarries, but found some ledges in which the material is of a poor grade. It was from these that the unsatisfactory rock which caused the patches reported as bulging on account of poor material used. A committee was appointed to investigate. F. R. Martin, A. N. Yost and E. Arion Lewis were appointed a street car committee. An effort will be made to secure uniform action of all clubs on initiative and referendum petitions. A protest was made against leasing part of Twelfth street from Boyd to Sprague street to the Missouri River Lumber company by the city council at \$12 a year.

## DOES ROTATION BALLOT GO?

Magney Says That Section of Law is Not Changed.

## PRIMARY ELECTION'S NEW PHASE

Deputy County Attorney Reverses Himself, but Deputy County Clerk Says Secretary of State Decides.

Deputy County Attorney Magney has reversed his opinion given several weeks ago in relation to the ballot and now is of the belief that the rotated ballot will have to be used in Douglas county at this fall's primary. In his first opinion he held the section of the law requiring the use of the rotation ballot in Douglas county had been repealed by the new primary law, but subsequent investigation has convinced him that it was not affected by the new enactment.

"When I gave my opinion to the County Auditor Smith," says Mr. Magney now, "I had referred to copies of the law published in the newspapers. From these I was of the opinion that Section 5811 of Cobey's Annotated Statutes was repealed in its entirety. The rotation ballot is provided for in subsection 1 of section 5811. Since examining the pamphlet copy of the law I find that only subsections a to h of section 5811 were repealed by the new law, leaving subsection 1 intact and in full force. Hence I am now of the opinion the rotation ballot will have to be used in this county this fall."

## Dewey Has Another View

Deputy County Clerk Dewey discussing the use of the rotated ballot declared the question was up to the secretary of state.

The secretary of state prepares an official ballot for use, and we was never ever prepared for us. This office has nothing to say about that, as the duty of making the form is placed on the state officer. We are not worrying much about it in this office."

## Quick Shine Shoe Polish

is the best for ladies', men's and children's shoes, oils and polishes and is water-proof.

## WHAT THE IMPROVERS WANT

Several interesting matters brought up at a joint session of clubs.

At the meeting of the Omaha Federation of Improvement Clubs Thursday night at the club hall at Twenty-fourth and Leavenworth streets the repairing of Sixteenth street was condemned because the patches were reported as bulging on account of poor material used. A committee was appointed to investigate. F. R. Martin, A. N. Yost and E. Arion Lewis were appointed a street car committee. An effort will be made to secure uniform action of all clubs on initiative and referendum petitions. A protest was made against leasing part of Twelfth street from Boyd to Sprague street to the Missouri River Lumber company by the city council at \$12 a year.

## Colic and Diarrhoea

Pains in the stomach, colic and diarrhoea are quickly relieved by the use of Chamberlain's Colic, Cholera and Diarrhoea Remedy. For sale by all druggists.

St. Clemens, the Mineral Bath City, is reached without change of cars only by the Grand Trunk Railway System. Time-tables and a beautiful descriptive pamphlet will be mailed free on application to George W. Vaux, A. G. P. & T. A., 125 Adams St., Chicago.

Vacation Excursions via the Baltimore and Ohio railroad, Jamestown Exposition. Tickets on sale daily until Nov. 28. Chicago to Philadelphia and return July 13 to 14 \$20.00; Chicago to Boston and return July 25 to 26 \$25.00. For particulars write W. A. Preston, T. P. A., 244 Clark St., or B. N. Austin, G. F. A., Chicago.

# HOME NOTES AND SOCIAL GOSSIP

## NOTES ON OMAHA SOCIETY

Clubs Draw Unusually Large Attendance for Late in Week.

## FIRST LARGE OUTING OF SEASON

Miss Hamilton and Mrs. Burns Give Trolley Ride and Boating Party, Finishing with Supper at Country Club.

Thursday evening brought out an unusually large crowd to dinner at the Country club. It was delightfully cool and those present spent the evening informally with music and dancing.

Miss Martha Cline, daughter of Mr. and Mrs. James A. Cline of Lincoln, and who is well known in Omaha, having been a frequent visitor of Miss Zola Dellecker, is to be married next Tuesday at 10 o'clock to Yale Huffman at the home of her parents.

## Picnic Party

Mrs. Samuel Johnson, Mrs. C. R. Campbell, Mrs. Wallace Johnson and Mrs. James McClair gave a picnic Thursday on the lawn of Mrs. William McLeod, 504 Florence boulevard, in honor of the Ladies' Aid society of the First United Presbyterian church.

## Hand-Knit Sweaters

Word has been received from Mr. and Mrs. John C. Goodwin, who are at present at Port Cockburn, Muskoka Lakes, Ontario, Canada. They have found it so delightful a resort that they will spend several weeks on their wedding trip there.

Mrs. John E. Spencer will give an informal afternoon party Thursday in honor of the alumnae members of Kappa Alpha Theta sorority.

Mrs. Joseph Cudaby and her guest, Miss Parks of Providence, R. I., will leave Wednesday for Chicago. Mrs. Cudaby will go to Chicago to Lake Mackinac, where she will spend several weeks, and Miss Parks will go to New York to visit friends.

Mr. and Mrs. O. L. Dickson left Friday for a vacation trip through the east. They will visit Washington, Atlantic City, New York and Boston and return via Niagara Falls.

Miss Zola Dellecker returned home Thursday evening from Chicago, where she attended the national convention of the Kappa Alpha Theta sorority.

Mr. and Mrs. W. J. Burgess and Mrs. Byron Smith returned home Friday morning from Lake Washington, where they have been fishing.

Mrs. J. J. Brown returned Thursday morning from a visit with Mr. and Mrs. Patrick at the F. K. ranch, near Sheridan, Wyo. Mr. and Mrs. J. N. E. Patrick and Mr. Robert Patrick are still visiting at the ranch.

Mr. and Mrs. J. P. Fallon entertained at

## FOR THE OUT-OF-DOOR SEASON

Silk Bathing Suits in High Favor—Hand-Knit Sweaters Are Useful.

There is a growing fancy for plaids and checks in bathing suits, but on the whole the suit of plain color with relieving collar and bands makes the smartest appearance. Sometimes bits of bright Breton or Russian embroidery are introduced upon the collar and band trimmings, and good effects are obtained by trimming material of plain color in checked or plaid bands.

For almost any sort of outdoor use the hand-knit sweater is one of the most useful garments a woman can own. To those who expect to include camping, fishing, tramping, hunting, or any such outings in their summer vacation, the sweater is almost indispensable. And the sweater of the present season is, by the way, a much altered garment. It is not the original, tightly hugging jersey effect thing that made the average woman look like a fright, but an altogether shapely, and even pretty thing. It may follow the lines of any of the several styles of jacket in vogue just now and may have cuff and collar trimming of velvet, serge, taffeta or knitted ribbed bands of some contrasting color.

For use on occasions where the corset is dispensed with, such as mountain climbing or other exercises, where absolutely free play of the muscles is necessary, the new sweater is ideal. There are just two things to be kept in mind when buying or making the garment. It must be an easy fit and of a color that will wash.

## Planting Asters

Instead of digging a hole for asters and other small plants, punch a hole in the ground with a stick. Fill it with water and place in it the plant. Press the dirt firmly around the root and cover the surface with perfectly dry dirt. In this way asters may be set out in the middle of a dry, bright, sunny day and will need no cover.

## modish leather shade, it to be seen among the bathing costumes this season, but it is at least a hot color, and unless relieved by plenty of white near the face is bound to be unbecoming. Gray, chisly in the darkest steel and iron shades, is another fashionable hue for the bathing suit, but here again white is demanded next the face.

Black and dark blue, with touches of white or of light blue are very generally worn because practical and universally be-

## TAFFETA BATHING SUIT

coming. Blouse and knickers are now usually cut in one, and adjusted at the waist by a draw string, while the skirt buttons around the waist; but there are a few prettiness models which are very pretty if well made and worn, though they are less becoming to the ordinary figure than a blouse and skirt and suggest the advisability of wearing a bathing corset.

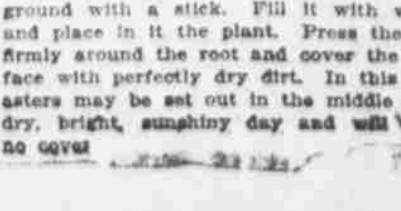
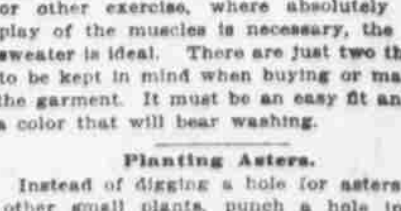
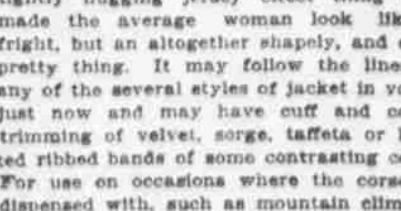
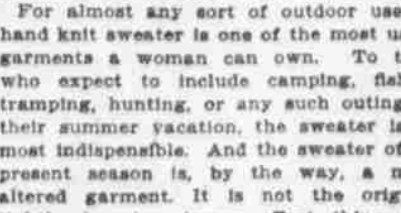
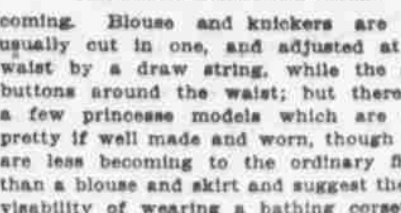
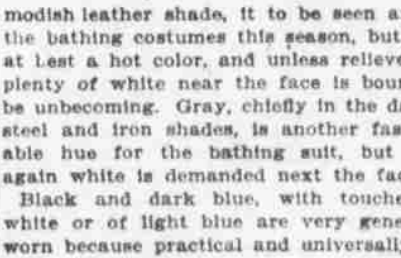
For almost any sort of outdoor use the hand-knit sweater is one of the most useful garments a woman can own. To those who expect to include camping, fishing, tramping, hunting, or any such outings in their summer vacation, the sweater is almost indispensable. And the sweater of the present season is, by the way, a much altered garment. It is not the original, tightly hugging jersey effect thing that made the average woman look like a fright, but an altogether shapely, and even pretty thing. It may follow the lines of any of the several styles of jacket in vogue just now and may have cuff and collar trimming of velvet, serge, taffeta or knitted ribbed bands of some contrasting color.

For use on occasions where the corset is dispensed with, such as mountain climbing or other exercises, where absolutely free play of the muscles is necessary, the new sweater is ideal. There are just two things to be kept in mind when buying or making the garment. It must be an easy fit and of a color that will wash.

## Hand-Knit Sweaters

For example, a suit of leather brown taffeta has a wide collar of white bordered by a band of checked white and brown taffeta. A scarf tie is of the checked silk and the skirt has a five-inch band of the checked silk at the bottom. A brown silk rubber cap, brown stockings and white shoes laced in brown should complete this costume.

Conservable brown, especially in the



Eat for contentment.  
Eat for good nature.  
Both are the result of physical health.  
The most nutritious food made from flour is

# Uneda Biscuit

Every bite a mouthful of energy.

5c In dust and moisture proof packages.

NATIONAL BISCUIT COMPANY