

Sale of Under-mastlin Saturday

BRANDEIS & SONS

Next Monday's Sale of Cluny Pieces

Big Special Sale of Women's KIMONOS

SHORT DRESSING SACQUES and COMBING JACKETS

A great purchase of these pretty Kimonos—made of fine lawns, dimities and the Jap kimono cloths; light and dark colors and Geisha patterns, with short, full sleeves, some loose back and others with shirred girdles—all sizes—

Worth up to \$1.00 each, at... **29c**



GRAND CLEARING SALE of SUMMER WASH GOODS IN THE BASEMENT

FINEST WASH GOODS at 10c Yd.—The beauty of these fabrics should be of exceptional interest to you—silk mouseline white grounds, with small and coin dots, beautiful plaid batiste and embroidered tissues. You will find in this assortment the wanted styles for a nice summer dress, at, yard..... **10c**

500 pieces fancy figured lawns in hundreds of styles and colors—splendid for wrappers, dresses and children's wear, worth 10c and 12½c, at, yard..... **5c**

Fine quality woven dress gingham—also the wanted plain shades, checks and plaids; also novelty gingham—every yard warranted fast color—splendid values at, yard..... **10c**

Thousands of yards 40-inch wide white lingerie lawns, sheer and silky, for fine summer waists and dresses, at, yard..... **10c**

Blue, brown and green apron checked gingham, almost as good as Amoskeag, long factory lengths, at, per yard..... **3½c**

Hundreds of other big special clearing sale bargains in the basement Tuesday.

EMBROIDERIES at 5c-10c-15c

Bargain squares piled high with fine embroideries, in newest patterns—in all widths, including corset cover embroideries, up to 17-in. wide—per yard, at..... **5c-10c-15c**

VAL LACES at 2½c-3½c-5c

White and cream laces, insertings and bands; very dainty as well as elaborate patterns, variety of widths, at..... **2½c-3½c-5c**

50c MERCERIZED TABLE DAMASK at 19c Yd.—All the balance of the fine mercerized Table Damask, mill remnants, nice long lengths in the lot and actually worth 50c yd., on bargain square Tuesday at, yd.,..... **19c**

BRANDEIS & SONS

DR. BRADBURY, Dentist, 18 Years

1808 FARNAM ST., OMAHA. Phone Douglas 1755

LINCOLN AND OMAHA RATES

Railroads Reply to Complaint of the Capital City.

DENY DISCRIMINATION EXISTS

Omaha is a Competitive Point and Used as a Basis for Rates, and Lincoln is Not.

Some time ago the Lincoln Commercial club filed a protest with the Interstate Commerce commission against the rates into Lincoln as compared with those of Omaha. A few commodities were picked out which showed that the rate from the south was higher to Lincoln than to Omaha, although in some cases the goods had to be hauled through Lincoln to Omaha and although Lincoln is closer to Kansas points than Omaha.

The railroads have maintained that Lincoln has no cause to complain because where rates on merchandise are higher into Lincoln a correspondingly lower rate is made to points to the west where these goods are reshipped. The railroads always maintain that Omaha is necessarily a basing point because of its location on the Missouri river and that to make the same rates to inland points would upset the entire fabric of rates.

Three railroads have filed answers with the Interstate Commerce commission to the complaint recently made by the Lincoln Commercial club which alleged discrimination on freight rates from the south to Denver of Omaha. The Missouri, Kansas & Texas made a general denial of the charges, while the Union Pacific and Burlington railroads through their general

counsel have asserted in the answers that Omaha is a competitive point and is entitled to the present rate while Lincoln is not. The railroads asserted that the granting of Missouri river rates to Lincoln, as its Commercial club asked, would destroy the commercial parity now existing in Nebraska and Kansas. The hearing before the Interstate Commerce commission will not take place here until after the summer vacation.

HEAD OF THE ELKS GOES EAST

Judge Melvin and His Secretary Leave Omaha After a Very Pleasant Visit.

After a two days' enjoyment of the hospitality of the Elks of Omaha, Judge Henry A. Melvin, grand exalted ruler of the Elks has left with his secretary, Moses P. O'Brien, for the east. Their destination is Philadelphia where Judge Melvin will have the honor of presiding over 1,500 delegates at the Elks national convention next week.

A big reception was held for Judge Melvin Sunday at the local club rooms, where practically all the local brothers greeted him. In the evening they went again to Krug park as the guests of Manager W. W. Cole. They had been entertained there by him at dinner Friday evening, but he had invited them again for Sunday to show them the pastion play.

At the reception Sunday afternoon speeches were made by E. C. Page, Rev. T. J. Mackay, W. T. Canada and Judge Melvin.

Judge Melvin will stop a short time at Waterloo, Ia., to visit Past Grand Exalted Ruler Pickett.

Users of Quick Shine Shoe Polish say it's the best and most lasting polish they have ever used. It gives a polish to the leather and it won't rub off on the clothing. A well satisfied user is the best advertisement.

A Rain Worth A Million

We had that yesterday—perhaps you enjoy the benefit of it.—Nearly all Nebraska did and Nebraska crops promise big on account of it.

Let us add that right now it is harvest time in those cool comfortable sandals. We are particularly well supplied this season in sandals; they seem to hit popular fancy. We can supply yourself or any member of the family.

CHILD'S SIZES
5 to 8 **\$1.10**
8 to 11 **\$1.35**

MISSES' SIZES
12 to 2 **\$1.50**

WOMEN'S SIZES
3 to 8 **\$2.00**

MEN'S SIZES
8 to 11 **\$2.25**

Call singly or altogether.

Drexel Shoe Co.
1419 Farnam St.



Away for the summer don't carry a roll of bills with which to pay your expenses—it isn't SAFE.

Arrange with us for travelers checks, drafts on Kountze Bros.' foreign circular letters of credit, payable to you only—if lost, no one else can get cash upon them, and they're good in any quarter of the globe.

For this and all other safe banking this bank, nationalized in 1863, is at your service.

OUR RESOURCES
\$13,088,714.39.

First National Bank
OMAHA, NEB.

Find a Customer

Every thing you have to sell is wanted by somebody if price and quality are right. A See Want Ad will find the customer.

HOTELS AND SUMMER RESORTS

CHICAGO BEACH HOTEL

American and European Plan

Finest Hotel on the Great Lakes
On the edge of town, this ideal hotel, spacious, elegant, modern, overlooks Lake Michigan Beach on two sides, while shaded parks complete the beautiful surroundings. The city is but 10 minutes ride from the nearby station. Many families make this their permanent home. There is always a cool breeze in warmest weather. 450 large outside rooms, 250 private baths, 1,000 feet of broad veranda. The table is always the best. Tourists and transients find a delightful place to stop en route and rest. Address for handbills: Illustrated Booklet, giving full particulars, Manager, Chicago Beach Hotel, 51st Blvd. and Lake Shore, Chicago.

SUMMER TOURS ON LAKE MICHIGAN

MANITOU
For passenger service exclusively, makes three trips weekly to Charlevoix, Harbor Springs, Bay View, Petoskey and Mackinac Island, connection with all Steamship Lines for Lake Superior, Eastern and Canadian points. Inquire about our week-end trips specially arranged for business and Professional Men.

LEAVES CHICAGO AS FOLLOWS:
Mon. 11:30 a.m. Wed. 3 p.m. Fri. 8:30 p.m.
MANITOU STEAMSHIP COMPANY
OFFICE 4 DOCKS, Rush and N. Water Sts., Chicago.

Take Your Family to

"Beautiful Bellevue"

FOR THE SUMMER
Only 40 Minutes from Omaha
After business hours leave the hot city. Pleasant rooms—good board. The most delightful summer resort in Neb. \$5 to \$7 per week. June 20 to Sept. 7.
Address Manager, Bellevue College, Phone 17622 N. Omaha. Bellevue, Neb.

Are You Going to St. Louis?

The Hotel Hamilton is a delightful place in the Best Resident Section and away from the noise and smoke, yet within easy access. Transient rates: \$1.00 to \$1.50 per day. European Plan. Special Rates by the week. Write for Booklet. Address W. W. WILLIAMSON, Manager, HAMILTON HOTEL, ST. LOUIS.

The Finest Fishing and Outing in
and cottages for sale on the finest lake in Wisconsin. Address JOHN W. HOGAN, Tangle Lake, Wis.

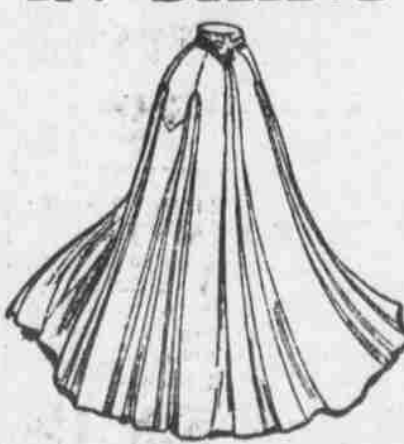
Our July Clearance Sales

A rousing chance for saving money! These July Clearance Sales are all they pretend to be—a determined effort to close out all summer merchandise, ignoring cost and loss. It's a half yearly after-inventory event that finds us with \$300,000 over-surplus of high grade seasonable merchandise that must be disposed of before its seasonableness expires. General market conditions make this affair memorable for you and for us. Here's hundreds of thousands of dollars worth of fine summer goods at tragic bargain prices. The goods must go, we have no room for out of season goods. New fall goods must be made room for. Read these daily announcements—they lead the town—such bargains are not possible elsewhere. We will beat all competitors because we back our ads with the goods.

BENNETT'S

SNAPS FOR TUESDAY

A SENSATION IN SKIRT SELLING



150 Skirts—made of fancy English chev-iot—all new styles—worth and selling regularly at \$5—Tuesday..... **1.95**

\$2.00 Linine Duck Skirts—another sensation..... 79c

A Snap in Undermuslins
Corset covers, drawers and gowns—all new, first-class goods—a lucky bargain purchase from one of America's best makers—goods worth and selling to 50c **19c**

Tuesday Only—Second Floor.

Men's Straw Hats



Values up to \$2.00..... **\$1.49**
Values up to \$1.50..... **\$1.19**
Values up to \$1.00..... **69c**

MEN'S NEGLIGEE SHIRTS

Tuesday will be the second day of our annual clearance sale on men's fine Negligee Shirts. The greatest values ever shown.
Values up to 50c, on sale..... **39c**
Values up to 75c, on sale..... **49c**
Values up to \$1.15, on sale..... **89c**
Values up to \$2.50, on sale..... **\$1.10**

MANUFACTURER'S SECONDS

Values up to \$2.00, on sale..... **69c**

Bennett's Big Grocery

Tuesday's List of Grocery Specials

Teas B. F. Japan, Oolong, Gunpowder, Congou, 1b..... **38c**
And 40 Green Trading Stamps.
Bennett's Capitol Extracts, red rose, banana, celery, cinnamon, ginger, strawberry, peppermint, peach, bottle..... **12c**
And 30 Green Trading Stamps.
Unseeded Biscuits, 4 pkgs., 15c
And 10 Green Trading Stamps.
Ginger Snaps, 1b..... **5c**
And 30 Green Trading Stamps.
Blood of grape juice, pint bottle..... **25c**
And 30 Green Trading Stamps.
Blood of grape juice, quart bottle..... **50c**
And 60 Green Trading Stamps.

Two thousand cans Bennett's Breakfast Coffee, can..... **40c**
And 50 Green Trading Stamps.
Three Star Salmon, can..... **20c**
And 20 Green Trading Stamps.
Egg-O-See Corn flakes, 4 pkgs..... **25c**
Worcester Table Salt, 2 sacks..... **10c**
And 10 Green Trading Stamps.
Peanut Butter, medium jar, 20c
And 20 Green Trading Stamps.
Three Star Corn, 3 cans..... **25c**
And 10 Green Trading Stamps.
Diamond 8 Chili Sauce, bottle..... **25c**
And 30 Green Trading Stamps.
Old Dutch Cleanser, 3 pkgs, 25c
And 10 Green Trading Stamps.

WABASH

Special Rates

Jamestown

All Summer Resorts, Rates, Booklets, all information, call at Wabash City Office, 1601 Farnam.

HARRY E. MOORES, G. A. P. D.
OMAHA.

Tuesday's Bargain Bulletin

BUY YOUR BOYS' CLOTHING NOW IN OUR JULY SALE

HAYDEN'S
THE RELIABLE STORE

Special Values Without Equals Elsewhere in the West

GRAND INVENTORY SALE

Monday was embroidery day—TUESDAY WILL BE LACE DAY—with all kinds of laces and insertings offered in five great lots at one-half to one-fifth actual retail value.

LOT 1—Narrow val. and Torchon Laces, slightly soiled or mused laces, worth up to 5c yard, all go Tuesday, at..... **1c**
LOT 2—Laces and insertings, worth 1c to 2c yard, all go, at, yd..... **2½c**
Special Sale of Ladies' Handkerchiefs—Greatest bargain ever offered you **3½c**

Radical Price Reductions

In Our Ladies' Underwear Department

Ladies' 75c Lisle Union Suits, loose knee, lace trimmed or tight knee, silk taped—sale price, Tuesday... **50c**
Ladies' Jersey Knit Pants, lace trimmed, large sizes, snap Tuesday, at..... **25c**
Ladies' Union Suits, in pure lisle with fancy lace yokes, umbrella knee, lace trimmed, worth to \$2, special **98c**

Ladies' Lisle and Cotton Vests, all sizes, worth to 30c garment, special bargains Tuesday at 5c, 10c, 12½c, and..... **15c**
Ladies' Pure Lisle Vests, regular 50c values with fancy yokes, at..... **25c**
Ladies', Men's and Children's Hose, in all sizes, plain and fancy colors—special bargains Tuesday, at..... **10c**

Extra Specials for Tuesday

From 9 to 10 A. M.—One case of full standard prints, fast colors, 6½c grade, 10 yards to a customer, at, a yard..... **2½c**
From 10:30 to 11:30—One case 8½c unbleached muslin—10 yards limit to a customer, at, a yard..... **4½c**
From 2 to 3 p. m.—25 dozen towels, extra large and heavy, 15c grade, only four to a customer, at, ea. **9½c**
From 4:30 to 5:30—One case of Bleached Muslin, regular 10c quality, 10 yards limit, at, a yard..... **5c**

For all day—
Apron Checks..... **2½c**
Dotted Swiss..... **7½c**
American Prints..... **4c**
Simpson's Prints..... **4c**
15c Batiste..... **7½c**
12½c Batiste..... **5c**
13½c Batiste..... **5c**
7½c Lawns..... **3½c**
Shirting Prints..... **3½c**

A Remarkable Sale of Skirts

A great stock of high grade wool and wash skirts, in all the season's newest styles ON SALE AT LESS THAN HALF.

SKIRTS AT 95c—An immense lot of pretty wash skirts and about 150 wool skirts, all new styles, secured at a remarkable bargain, any garment in the lot, fully worth two or three times Tuesday's price, to be closed, choice **95c**

\$6 Skirts, in neat serges, panama, checks, stripes and plaid materials—ama skirts, all sizes, 22 to 38 waists, wonderful values, at..... **\$2.90**
SKIRTS, made to sell at \$8, in melrose cloths, chiffon panama, volles, silks, etc., checks, stripes, plain colors and fancy mixtures, choice in this sale, at..... **\$3.90**
French panamas, Aultman volles, etc. handsomely trimmed—at... **\$6.90**

Great sale of kimonos and Dressing Sacques—regular values to 75c—choice, at..... **19c**

TRY HAYDENS' FIRST

Take One With You

One of our Fountain Pens. You'll need it every day while you are on your vacation. We have them at all prices. A good guaranteed pen, \$1.25. Waterman Pen \$2.50. Spend a few minutes in our store. LOOK FOR THE NAME.

S. W. LINDSAY, Jeweler
1516 Douglas Street.

JAMESTOWN EXPOSITION

The low rate excursion tickets on sale by the **CHICAGO & NORTH-WESTERN RY.**

On account of the Jamestown Exposition afford one of the finest opportunities to visit the Atlantic Seaboard that has been offered the traveling public in many years.

Special routings and side trips provide for visits to

Niagara Falls
Lake Champlain
The St. Lawrence
Hudson River Trip
Adirondacks
The Catskills
Berkshire Hills

Chautauqua
Atlantic City
New York City
Boston
Philadelphia
Washington
Baltimore

and various seaside and mountain resorts

Direct connections are made in Chicago by the Chicago & North-Western Ry. with trains of all lines east.



For rates, tickets and full information apply to

TICKET OFFICES
1401-1403 Farnam Street
OMAHA, NEB.

MEN!

Do you know that your failure to instruct your wives, daughters, sisters and mothers in the correct way to step off a car exposes them to danger? "Take hold of hand-hold with left hand and face direction the car is moving." Assist us in preventing accidents.

Omaha & Council Bluffs Street Railway Co.