

CAVE DWELLERS OF CELEBES

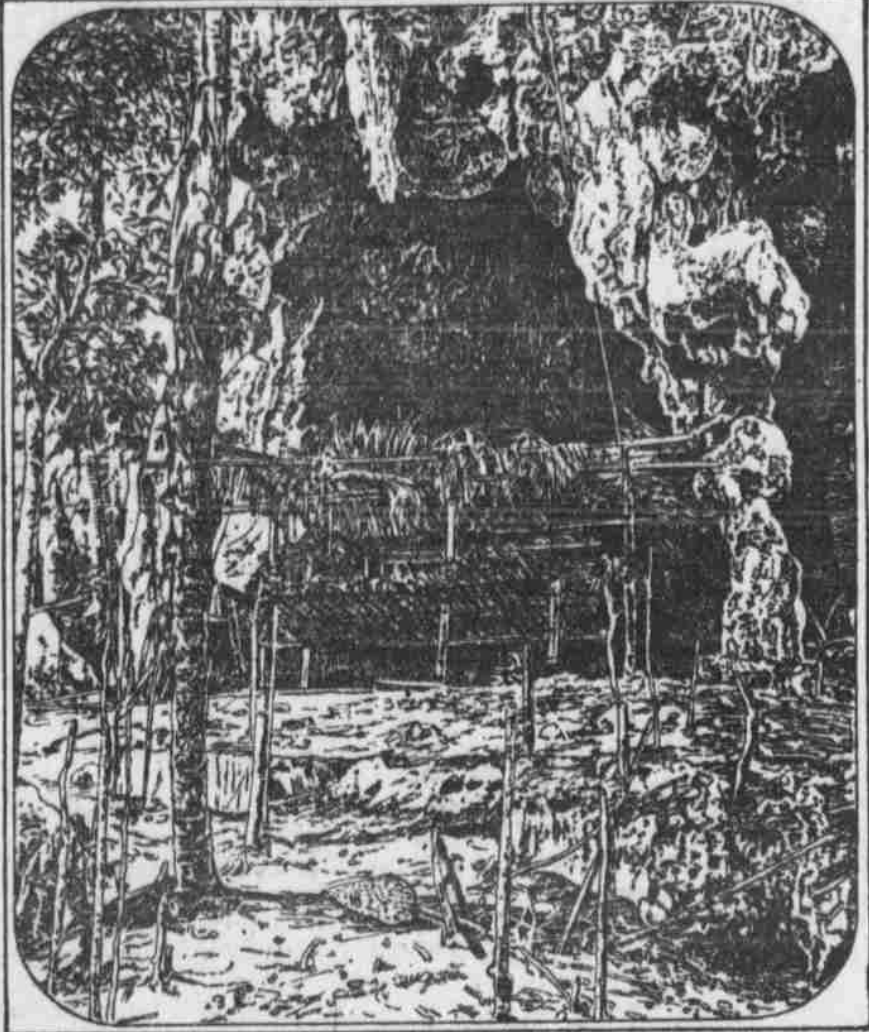
A People that Has Just Emerged From the Stone Age.

MOST PRIMITIVE OF THE HUMAN RACE

Explorers Record Results of Study of Tribe in Stage of Transition from Cave to Hut Life.

Paul and Fritz Sarasin have been known for years as the men who have contributed more than any other explorers to our knowledge of the great island of Celebes.

is now subordinate to the tilling of maize and rice. The Bugis, one of the most widespread and important peoples of Celebes, are transforming their more primitive and less resourceful neighbors. It is the Bugis platforms and huts which the Toalals have reared in the caverns on whose grass-strewn floors they slept only a generation ago.



CAVE DWELLING ON ISLAND OF CELEBES.

the island, and in a few days they were again among the limestone mountains of Lamontjong. Here the Toalal cave men live in what is called an island of forest, perched high on the hills above the surrounding woodless plains.

The world is greatly interested in learning all it can about the prehistoric cave dwellers. Anthropologists have been able to establish with certainty a considerable number of facts relating to these primitive peoples by the study of their traces of homes; and in no part of the world has more light been thrown upon the habits and the rude arts and industries of the cave men than by the investigations still in progress among American caves, especially in the arid region of the United States.

The task which the Sarasins set themselves was very interesting, for here were supposed to be primitive men in the twentieth century living in caves untouched by any of the influences which are called civilization.

When the explorers really found was a little different, though equally valuable from the anthropological point of view. They found the Toalals still inhabiting their caves, but they are in the stage of transition from cave to hut life, building huts in their caverns or living on platforms reared in the caverns half way to the limestone roofs and sometimes building new habitations in the open air, but always near the mouth of their caves.

The Toalals are, in fact, living a foot or two above innumerable relics, from which the Sarasins have deduced some facts about their ancestors. The tribe knew nothing of these relics, but they were brought to light by the explorers, who tell the story in a large book they have just published.

The first grotto the explorers reached was a beautiful cavern, divided by a stalactite column into two parts, of which the higher one was inhabited. The roof was twenty feet above the floor, and half way between ground and roof was a wide, low platform supported on posts, where the inhabitants slept, cooked and ate. The roof was black with smoke.

No implements of stone were seen, but when the explorers dug into the earth about two feet they found many fragments of worked flint and split bones. These finds are proof that in the stone age the cave was occupied by man, and it is believed that the Toalals are the descendants of this ancient population. All later investigations tended to confirm this conclusion.

They dug into the floors of many caves and brought up a harvest of amulets, pipes, arrow heads, implements and many other things made of stone. In addition to articles fashioned out of bones and the tusks of wild swine. So from day to day the explorers wandered from cave to cave, excavating in many that are uninhabited, though the evidence brought from beneath their floors was abundant that they were formerly the homes of primitive man.

Most of the stone work was made of flint, though volcanic stone, andesite and limestones were also used. There were scrapers, knives, lance points and arrow heads in abundance. The sharp sides of the arrow points were cut into saw teeth. Cooking and other utensils were clumsily made. Stone points were fastened to wooden handles were found, similar to those now used by the Toalals to dig roots. Pipes were fashioned both from stone and bones. No ornaments of any kind were discovered.

The finds seemed to prove that these primitive folk had no domestic animal excepting the dog. The bones of scores of beasts and birds were unearthed, but all the finds are relics of a purely hunting people.

The Toalals speak of the time not long ago when they were hunters pure and simple. The present generation, however, knows nothing of the stone age. They use no implements made of stone and hunting

they use to hunt at game. They procure rude pottery and sail from the Bugis. They know no dance and have no musical instrument except three charred pieces of wood, which they place on their knees and hammer with sticks, each piece sounding a different note. A few leaves serve them for medicine. They have no ornaments, and, like some other people of lowest culture, they have forgotten nearly all their own language and use the speech of the Bugis. Males, fruits, green vegetables and roots, with a little meat obtained by hunting, are their principal food.

Thus the Toalals illustrate the human race on one of the lowest rungs of the ladder who are gradually making a little progress, chiefly through contact with neighbors who have climbed a little higher, though still primitive themselves.

HOW TO OBTAIN A PATENT

Necessary Steps to Be Taken and the Probable Cost of Getting It.

If you have thought out some improvement in tools, machines or other articles in daily use, some labor saving device, a new design of any kind or any process of value you probably want to protect your idea by obtaining a patent.

The first step in obtaining a patent after perfecting the idea is to make a rough pencil sketch showing in detail the various parts of the device. A detailed description should also be made explaining all the features, advantages and how to work the invention.

It is a good plan to number the different parts in the sketch and refer to the numbers in writing the description. If it is easier to explain by the use of a model a small one should be made or mounted photographs of a model often make good substitutes.

After getting this material ready it is time to consider whether to employ a patent lawyer or send the idea directly to the patent office. If there is any doubt about your being able to obtain a patent on your device the best course would be to employ a regular lawyer, for the government charges a fee for making a preliminary examination of the patent records to ascertain whether or not the device is patentable.

This service is performed by most of the good patent law companies gratis and if the chance of securing a patent seems small they will not undertake the work.

The government fee for filing an application for a patent is \$15, payable in advance. Whether the patent is allowed or not, this fee is retained by the patent office. The ordinary lawyer's fee would be \$1 for the preliminary examination; thus, if there is any doubt the originator would save \$16 by first consulting a patent attorney and examination.

The government fee for the allowance of each patent is \$20, payable within six months, thus making a total of \$35 in fees to the government. A lawyer's total fee is usually from \$35 to \$50, providing there are no complications in the granting of the patent. Thus the cost in full of properly securing a patent would be from \$50 to \$75. The patent office will not respond to inquiries concerning the patentability of novelties and advises the applicant to employ a competent attorney to prosecute his case for him, as the value of a patent depends largely upon the specifications and claims which it covers.

Information as to what may be patented will be found in the revised statutes under section 4886, the substance of which is that any new and useful art, machine, manufacture or composition of matter or any new and useful improvements thereof can be patented.

A change of an old device is patentable, no matter how simple the change may be, as long as it produces a new and useful result. Any combination of previously patented devices may be patented.



Let Hartman Feather Your Nest and You'll Save Money on THE HOME OUTFIT

The average young couple contemplating marriage will find it necessary through life to practice economy -if YOU don't you're an exception. If you are one of the vast majority who must make every dollar count, BEGIN RIGHT. The furnishings for the home should be bought with an eye to economy—for that's where you begin. Practice economy there. Buy at a saving.

Now there's a message of economy conveyed to you in this announcement. Just consider for a moment the prices quoted on the various articles. Compare them with the best offerings of any other home-furnishing institution in Omaha. You'll find the values unmatched—every article just as described—just as handsome as the illustration shows—just as big a bargain as it's represented to be. Here's economy—here are saving opportunities. The biggest values we have been able to offer in weeks. Run your eye over these prices, then step in tomorrow and let us show you the goods.

3 ROOMS - - - \$72.50 4 ROOMS - - - \$95.00 5 ROOMS - - - \$119.00
Furnished Completely TERMS: \$7.50 Cash and \$6.00 Month \$9.00 Cash and \$8.00 Monthly \$12.00 Cash; \$10.00 Month

LARGE & BEAUTIFULLY ILLUSTRATED CATALOGS FREE TO OUT-OF-TOWN TRADE WRITE FOR THOSE YOU WISH
FURNITURE, RUGS & CARPETS, CO. CARTS & BABY CARRIAGES, REFRIGERATORS & GASOLINE STOVES, STOVES & RANGES. CREDIT TO PEOPLE ALL OVER THE U.S.

HARTMAN'S IMPERIAL MONARCH BRUSSELS RUGS. Terms: \$1.50 Cash; 50c Weekly. High Grade Brussels Rugs, 10x6x9 Feet—A special rug are of superior character, made of best mangle the biggest rug values in Omaha today.

26 Piece SET ROGERS FREE. Given free with \$100 purchase or sold for \$6.95. Terms, \$1 cash, 75c a month. If set is bought, and at any time during the year purchaser buys \$100 worth of goods from us, we will credit cost of same to their account.

HARTMAN Special Chiffonier 6.85. This is a large size, extra well made chiffonier. It is made of beautiful golden oak, elegantly finished, large French bevel mirror and neat carvings. Extra special.

All Goods Marked Plainly. Special Iron Bed 2.15. Heavy new design, in full or 3/4 size, in new popular colors of enamel, baked on, heavy chills and posts.

Solid Oak Sideboard 12.75. This is a massive sideboard of immense proportions and very elaborate. Has beautiful carved ornamentations, carved claw feet, mammoth French bevel mirror, swell front, and is of superior construction in every detail.

This Elegant Iron Bed 4.99. Of above handsome design, very massive, heavily enameled, any color desired, large tubing, heavy elegant bed.

Hartman Open Account Credit Plan is Strictly Confidential. Hotel Washstand Special 6.75. An exceptionally well designed article of furniture. Made of selected stock, in rich golden oak finish, highly polished. Double swelled, top drawer, with a spacious cupboard below. Large French beveled mirror.

Massive Golden Oak Dresser 8.75. Such a bargain in a polished oak or mahogany finished dresser we were never able to offer you before. This dresser is of superior design and finest possible workmanship and finish. It has a large French bevel mirror set in carved mirror frame and supported by carved mirror standards. Every detail has had the most careful attention and the dresser is therefore of most dependable character.

America's Largest Home-furnishers. Oak or Mahogany Center Table 1.95. With Fancy Shaped Top and shelf, made of solid quarter-sawn oak, or polished mahogany, legs beautifully turned and fluted.

IRON BED SPRINGS AND MATTRESSES 10.75. With Fancy Shaped Top and shelf, made of solid quarter-sawn oak, or polished mahogany, legs beautifully turned and fluted.

Artistic Parlor Rocker 2.85. Made in solid quarter-sawn oak, polished wood seat, extra elaborate in design and beautifully finished. This rocker is of superior construction.

This Large, Elegant Kitchen Cabinet at 14.75. This Kitchen Cabinet is 71 inches high and 46 inches wide. It is just like the illustration, made throughout of best selected materials and constructed in a most thoroughly dependable manner. The top has one large inclosed compartment measuring 15x12 inches, fitted with large glass door. There are two large drawers measuring 32 inches and two small drawers measuring 5x3 inches.

Refrigerator, Special Price 7.75. This Refrigerator is on sale all week at all Hartman stores. It is strongly constructed of great durability and most economical. It is lined with galvanized iron, has metal shelves, patent drip cup and other improved features. A value you cannot possibly duplicate elsewhere in Omaha.

Complete with high warming closets, of large size, full size, kitchen holes, large square oven, made of superior materials, elegantly nickel-plated and guaranteed in every particular. Special easy terms of credit given.

HARTMAN'S SPECIAL BED COMBINATION. This bed combination consists of elegant iron bed, splendid springs and a most excellent mattress. The bed is of above design and is worth as much as we now ask for the entire combination. The springs are of superior character. The mattress has soft top, extra heavy ticking and taped edges. This is a marvelous value at the price and are on sale all week. Terms: \$1.00 Cash; 50c Weekly.

Hartman's Special Steel Ranges 26.75. Complete with high warming closets, of large size, full size, kitchen holes, large square oven, made of superior materials, elegantly nickel-plated and guaranteed in every particular. Special easy terms of credit given.

New Model Drop-Head Sewing Machine 18.75. It combines simplicity, durability, reliability, speed, strength and beauty in a machine with a wonderful capacity for wide range of work—ironing, felting, gathering, hemstitching, sewing, etc. It is of new type drop-head, high arm machine, is beautifully nickel plated, automatic bobbin case for line, as well as full set of attachments and accessories, solid oak case. Sold on easy terms.

Elegant Go-Cart 6.75. Complete with ruffled parasol as shown above, has the new 1907 sleeper adjustment and large wheels, fitted with cushion tires, enamel green and patent foot breakers, folds with one action, foot rest and all; very light, but strong, dependable cart.

22 Great Stores Throughout the U. S. HARTMAN'S 1414-1416-1418 Douglas Street

The Omaha Evening Bee. A clean and reliable paper for the home is barred from no self-respecting household. Within everybody's reach--reaches everybody. 6c. Per Week Delivered.