

BRANDELS BOSTON STORE & SONS

Refrigerators in the Old Store Basement!

Women's Collarettes
Silk Ruffs and Boas at **98c** worth up to \$5.00

Tuesday we will sell thousands of high class samples of the finest neckwear ever brought to Omaha. These are all New York importers' samples and consist of silk ruffs, boas of silk chiffon and silk maline, silk net collarettes, large lace cape collars, long lace Berthas and long chemisettes of all over lace and batiste.

At About 1-4 Price, worth \$2.50 up to \$5—on two large bargain squares, at, each—

98c

Women's 50c Kimonos and Dressing Sacques 15c

Prettily made of lawns, percales and dimities in light and dark colors, trimmed with wide plain bands, some with large Japanese sleeves—big bargain Tuesday, at..... **15c**

New Summer Silks, worth \$1, at 49c

Beautiful dress foulards, fancy silk suitings browns, and leather shades, chiffon finish dress taffetas, plaid silks, shadow checks, Pekin stripes, worth \$1 a yard, at, per yard. **49c**

Three Specials in new Basement

Great assortment of checked and striped Egyptian tissues—in dress lengths—25c values, at, per yard **3 1/2c**

15c batiste at 3 1/2c yard—Remnants of regular 15c sheer batiste—many pieces to match—all the wanted patterns for waists and dresses, per yard **6 1/2c**

One bargain square of various grades of white goods, including 25c Persian lawns, mercerized waistics—poplins and sheer Indian linons—special Tuesday, at, per yard **7 1/2c**

BRANDELS BOSTON STORE & SONS

TALK OF MANY PLACES

Walter Waggoner Returns from South America and South Africa.

CHEYENNE COUNTY IS PROSPEROUS

Joseph Oberfelder Tells of Development of Western Nebraska—Big Horn Basin is Planting Sugar Beets.

Walter A. Waggoner of Buenos Ayres and Capetown is visiting his father, Ab. Waggoner, city license inspector, and may decide to return to Nebraska to live.

Since 1903 Mr. Waggoner has been engaged in live stock trade between South America and South Africa and only retired from the business when his health made it imperative. Speaking of conditions in the antipodes Mr. Waggoner said:

"During the war with the Boers South Africa demanded large supplies of South American cattle and sheep for the support of the army, and a large number of horses and mules were sold, but since that time the market is worthless. Credits are curtailed to such an extent that one of the largest landowners in the colony found it impossible to borrow money from the African Banking Corporation bank to carry stock, although he offered 7 per cent interest.

"South America, on the other hand, is booming. One has to keep his eyes open when he trades with the natives because they know every trick of the trade and practice all. One morning the owners of the 'estancias' or ranches are called in Argentina, awake to find themselves millionaires whereas they had before believed themselves to be in easy financial condition. Great Britain was buying their beef and mutton. Then foot and mouth disease broke out on an Argentine cattle ship and that trade was lost. Argentina placed an embargo on cattle for some time, but that has been lifted and shipment is resumed. Germany and a number of continental countries are accepting stock.

"When the war between Japan and Russia began, I went to Tokio to get a contract for horses and mules, but the day before I reached there an Australian firm was given the business and I went back to South America, became ill and was forced to come back to Nebraska as soon as I was able to travel.

Dr. Lyon's PERFECT TOOTH POWDER

Cleanse and beautifies the teeth and purifies the breath. Used by people of refinement for over a quarter of a century. Convenient for tourists.

PREPARED BY S. H. Lyon, D.D.S.

back to Nebraska as soon as I was able to travel.

"The Argentine Republic has a great future. Cattle fattened only on alfalfa weigh 1,700 pounds, and the graziers are introducing Shortorns and Herefords rapidly. The Texas grade is unknown on that market."

Oberfelder an Western Nebraska. Joseph Oberfelder of Sidney arrived in the city yesterday and will remain several days attending the biennial session of the Grand Lodge of the Ancient Order of United Workmen. Speaking of western Nebraska, Colonel Oberfelder, who is an enthusiast of that section of the state, says:

"Talk about your country, ours beats anything on earth. Land values have more than quadrupled in the past twelve months and they are still advancing. Rich in soil and agriculture, Cheyenne county is well adapted to stock raising. The nutritious grasses are of richest quality, corn is raised in abundance. Wheat, rye, oats and barley have been sown in immense acreage this year and the farmers have the utmost confidence in harvesting the biggest crops this fall. All are busy now planting corn."

"Most of the nationalities are represented in our farming communities, there being German, Bohemian, Scandinavian and Irish settlements, in which there are good schools and churches. The homes are a model of neatness. Our summers are characterized by warm days and cool nights, the heat of the day not attended by the usual debilitating effects; our winters by an abundance of sunshine and the general absence of snow and of severe and continued cold. Hardly a day passes but what from three to four carloads of immigrant movables are unloaded at Sidney."

Mr. Oberfelder went there during the Black Hills days and has resided there continuously since.

Big Horn Basin Booming. D. Glen Deaver, superintendent of the landseeker's information bureau of the Burlington, has returned from the Big Horn Basin country, where he went with the first of the personally conducted excursions at popular rates, which the Burlington will run to that country during the summer months. He had prospective settlers from Michigan, Ohio, Kansas and all western states.

"These settlers are shown the land and at no expense to themselves, for the local land agents are prepared at each town to show the buyers over the country," said Mr. Deaver. "The settlers are planting about 1,800 acres of sugar beets in the basin this year, which is the first planted except as experiment. The new factory at Billings is prepared to care for all that are grown. All the towns in that section are growing with banks and newspapers. The next excursion will be May 21."

Railway Notes and Personal. William Canada, special agent of the Union Pacific, is in Chicago. E. L. Lomax, general passenger agent of the Union Pacific, left Monday for Chicago. George F. Bidwell, former general manager of the Northwestern, has gone to Chicago. Frank Walters, general manager of the Northwestern, left Monday for a short trip to Chicago. William Murray, assistant general passenger agent of the Union Pacific, has gone to Chicago. J. P. Cantillon, trainmaster of the Northwestern; S. M. Braden, general superintendent; L. N. Costley, superintendent of the Northwestern at Chadron; C. H. Reynolds, superintendent of the Northwestern at Norfolk, left Monday for Chicago. Do not take a substitute for Chamberlain's Cough Remedy. It has no equal.

Misses' and Children's Shoes

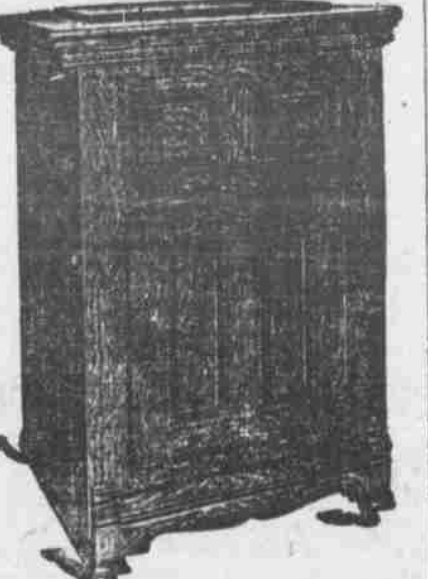
Misses' and children's shoes are as important as the shoes for father, mother or brother. We pride ourselves on the record we have made with our children's and misses' shoes. They are made of plump kid and genuine Box Calf—extension soles, button or lace. Children's sizes 8 1/2 to 11 **\$1.50** Misses' sizes 11 1/2 to 2 **\$2.00** Young women's sizes 2 to 6 **\$2.50** A little higher than some, but a whole lot better.

Drexel Shoe Co.
1419 Farnam St.

We Make a Specialty of REFRIGERATORS

We sell Mr. Hurd's, the great refrigerator builder, latest invention, the **COLD STORAGE**

We cut the prices for cash or sell the \$6.00 to \$12.00 sizes at \$2.99 per month. The \$15.00 to \$22.00 sizes at \$3.99 per month. The \$25.00 to \$32.00 sizes at \$4.99 per month.



The features of the cold storage are dry cold air, ice keeping qualities, quality of white enamel, and glass trap. Some of the largest stores in Omaha sell the poorest Refrigerators by misrepresentation. It's the poor Refrigerator that makes ice high, not the ice dealers.

The Stuetzel Stove Co.
714 South 16th Street

ATHLETES

TO KEEP IN GOOD TRIM MUST LOOK WELL TO THE CONDITION OF THE SKIN. TO THIS END THE BATH SHOULD BE TAKEN WITH

HAND SAPOLIO

All Grocers and Druggists

CHICAGO BEACH HOTEL

American and European Plan
Finest Hotel on the Great Lakes

On the edge of town, this Ideal Hotel, spacious, elegant, modern, overlooks Lake Michigan Beach on two sides, while the city is but 10 minutes ride from the nearby station. Many families make this their permanent home. There is always a cool breeze in warmest weather. 450 large outside rooms, 250 private baths, 1000 feet of broad veranda. The tables are always the best. Tourists and transient guests find a delightful place to stop en route and rest. Address for handcomely illustrated booklet, giving full particulars, Manager, Chicago Beach Hotel, 51st Blvd. and Lake Shore, Chicago.

Are You Going to St. Louis?

The Hotel Hamilton is a delightful place in the Best Resident Section and away from the noise and smoke, yet within easy access. Transient Rate: \$1.00 to \$3.00 per day. European Plan. Special Rates by the week. Write for Booklet. Address W. F. WILKINSON, Manager, HAMILTON HOTEL, ST. LOUIS.

ASK FOR A GLASS JAR

THEY'RE ALWAYS RIGHT

OMAHA WEATHER FORECAST—Tuesday: Fair.

BENNETT'S SNAPS FOR TUESDAY

THE Summer Quarterly of the Ladies' Home Journal Patterns

At Pattern Booth, for Fifteen cents. It includes a coupon good for 10c cash, applying on any pattern purchased up to September 1st. It means a quarter's worth for a nickel.

THE Grand Graduating Window—All White

Contains everything in Misses' Wear for graduating ceremonies. It particularly indexes the hundreds of exceptional values which we are offering in ready-to-wear for misses, which are to be found on first and second floors—Tuesday.

2d Floor The Bennett Company 2d Floor

Extra Special Suit Sale for Tuesday

\$29.50 and \$25 Tailored 1695 Suits for

Etons, Prince Chap Suits, Pony Coat Suits and 3-button Cut-away Suits—all the new Spring and Summer Cloths, every color and shade, including the popular russet brown and champagne.



A Bona Fide Suit Sale

Tuesday, \$29.50 and \$25 Suits for **\$16.95**

Second Floor.

The Bennett Company

Lace Section

Oriental Net Top Laces in white and butter, 4 to 9 in. wide, worth 15c yard, at **7c**

RIBBONS

Black Satin Back Velvet Ribbon in all the most popular widths—1-inch, 15c value, yard..... **7c** 1 1/2-inch, 19c value, yard..... **9c** 1 3/4-inch, 25c value, yard..... **12 1/2c** 2-inch, 32c value, yard..... **15c** 2 1/4-inch, 37c value, yard..... **17c** 2 1/2-inch, 40c value, yard..... **19c**

Notions

Children's frilled Elastic Pin-on Supporters, in white, plink, sky, red, yellow and black, per pair..... **5c** White Embroidered Mull Ties in 25 assorted patterns, worth 15c each, at..... **5c** White and butter Venice Lace Tab Collars, worth 25c, for..... **7c** 1 1/2-yard Clifton Vests, worth 25c each, at **5c**

Bennett's Big Grocery

Coffee Roasted Daily in Department in View of Customer.

Bennett's Breakfast Coffee, 5-lb. can..... **45c**
And Thirty Green Trading Stamps
Basket Fried Japan Tea, per pound..... **85c**
And Thirty Green Trading Stamps
Pepper, pure ground, 1/2-lb. can..... **10c**
And Five Green Trading Stamps
Diamond 8 Preserves, large jar..... **25c**
And Twenty Green Trading Stamps
Peanut Butter, medium jar..... **30c**
And Ten Green Trading Stamps
Baylor's Yum Yum Pickles, pint bot..... **25c**
And Twenty Green Trading Stamps
Pears in syrup, can..... **15c**
And Ten Green Trading Stamps
Batavia Salmon, 1/2-lb. can..... **12 1/2c**
And Ten Green Trading Stamps
Blood of Grape Juice, quart bottle..... **25c**
And Ten Green Trading Stamps
Japan Rice, 5 pounds..... **14c**
And Ten Green Trading Stamps
Pillsbury's Vitex, per package..... **13 1/2c**
And Ten Green Trading Stamps
Pickles, assorted, three bottles..... **25c**
And Ten Green Trading Stamps
Ginger Snaps, fresh, pound..... **5c**
Corn, can..... **4c**
Baked Beans, per pound..... **4c**
Potted Meat, can..... **4c**
New York Full Cream Cheese, per pound..... **80c**
And Ten Green Trading Stamps
Virginia Swiss Cheese, per pound..... **85c**
And Twenty Green Trading Stamps
Granulated Sugar, twenty-one pounds..... **\$1.00**
And Double Green Trading Stamps

White Sale Specials for Tuesday

250 Embroidered Lawn Waists, each **\$.19**

50c Muslin Drawers for **23c**

\$1.50 Children's Lawn Dresses for **98c**

\$7.50 Lawn Tub Suits, **\$4.95**

\$1.50 White Duck Skirts for **95c**

\$1.00 Baby Caps, sample line, for **48c**

The Bennett Company

PROMPT ATTENTION

TO THE NEEDS

Of every depositor, is the aim of this Bank at all times.

We are busy, but never too busy to—
Receive your Deposits promptly.
Make your Collections promptly.
Deliver your Statement promptly and
Extend Financial Aid promptly.

Business with you under these prompt conditions?

Capital and Surplus..... **\$600,000.00**
Undivided Profits..... **\$472,348.00**
Reserves..... **\$13,268,000.00**

First National Bank

OMAHA, NEB.

Annoyances of Wash Day

will be spared you if you phone Douglas 28 to call regularly. Your wash will be done "The Good Old Way" which includes all washing, all starching, all drying and ironing of sheets, pillow cases, napkins, towels, etc.

The rates are very reasonable—cheaper than you can have it done at home. Telephone now.

The Medel Laundry

PAINLESS EXTRACTING

of teeth with VITIALIZED AIR is absolute in every case. We make it and it is always fresh, therefore causing no after effects. Try it the next time you want a tooth extracted.

TAFT'S DENTAL ROOMS
1817 Douglas Street.

Office hours, 9:00 to 9:30 a. m., 12:00 to 2:30 p. m. Telephone Harney 289.

OMAHA VETERINARY HOSPITAL
2810 Mason Street, Omaha, Neb.
H. L. Ramacciotti, D. V. S., Deputy State and City Veterinarian, Food Inspector, Chief Surgeon. D. C. Scott, D. V. S., Hospital Surgeon.

TUESDAY'S BARGAIN BULLETIN

EVERY ITEM A **SPLENDID BARGAIN** MANY OTHER DELIGHTFUL BARGAINS

HAYDEN'S THE RELIABLE STORE

Special Sale of Wash Suits

\$5 and \$6 Values \$2.98 **\$10 and \$12 Values \$7.50**

A great purchase of dainty Wash Dresses and Shirt Waist Suits goes on sale Tuesday—the most delightful bargains ever offered at this season.

White and Colored Lawn Dresses and Shirt Waist Suits, all newest styles, regular \$5.00 and \$6.00 values, at... **\$2.98**

\$6.00 Coats at \$3.95—Stylish Covert and Plaid Coats, trimmed in combination colors; sale price..... **\$3.95**

Women's \$10.00 and \$12.00 Cravenettes, sample garments and broken lots; to close, Tuesday..... **\$4.95**

Beautiful White Dresses, in fine opera batiste, mulls and Persian lawns, charming styles, **\$10.00** and **\$12.00** values, at... **\$7.50**

Women's Lawn Kimonos, regular 50c values, 50 dozen to select from; Tuesday at, your choice..... **12 1/2c**

Hosiery, Glove and Underwear Specials

Ladies' 12 1/2c Hose, in fast black and fancy colors; 4 pair for..... **25c**

Infants' 15c hose, in white, pink or blues; at, pair..... **5c**

Headquarters for Long Silk Gloves—Our great stock includes every imaginable color in very best qualities and at less price than you expect to pay. Greater variety here than you'll find any place else in the west. We import direct from the manufacturer.

Long Silk Gloves... **98c, \$1.50, \$1.99**; Short Silk Gloves... **15c, 25c, 50c** up

Ladies' Muslin Corset Covers, worth to 50c, trimmed with lace and ribbons; snap at..... **15c**

Ladies and Misses' Vests, all sizes, taped neck and sleeves, worth to 15c; choice..... **5c**

Short Silk Gloves... **15c, 25c, 50c** up

Our Great White Goods and Linen Sale

Will Continue Tuesday and Wednesday

Everything advertised for Monday will be continued Tuesday and Wednesday. Be sure and attend these sales.

TWO EXTRA SALES IN THE DOMESTIC ROOM, IN THE FORENOON. Commencing at 8:30 A. M. and Lasting Till 9:30 A. M.—We will sell three cases of extra heavy Unbleached Muslin, regular 8 1/2c grade (not over 10 yards to a customer)—at, a yard..... **4 1/2c**

From 10 Till 11 A. M.—We will sell 32-inch extra heavy German Blue Calico, regular 12 1/2c grade (not over 10 yards to a customer)—at, a yard..... **5c**

IN THE AFTERNOON.

From 2 Till 3 P. M.—We will sell three cases of extra heavy Bleached Muslin, regular 10c quality (not over 10 yards to a customer)—at..... **6 1/2c**

From 3 Till 3:30 P. M.—One case of Turkish Towels, good large size—each..... **2 1/2c**

From 3:30 Till 4 P. M.—One case of extra heavy Turkish Towels, large size, 15c grade—at, each..... **3 1/2c**

From 4:30 Till 5 P. M.—We will sell extra heavy bleached Towels, 20x40 inches, regular 19c Towels—at, each..... **7 1/2c**

No dealers or peddlers sold at these rates.

Pearl Button Sale

A special purchase of Pearl Buttons suitable for shirt waists, underwear, children's dresses and fancy pearl trimming buttons. Less Than Half Price.

5c Pearl Buttons, per doz., at... **1 1/2c** 15c Pearl Buttons, per doz., at... **5c**

10c Pearl Buttons, per doz., at... **2 1/2c** 20c Pearl Buttons, per doz., at... **7 1/2c**

12c Pearl Buttons, per doz., at... **3 1/2c** 25c Pearl Buttons, per doz., at... **10c**

TRY HAYDEN'S' FIRST

ILLINOIS CENTRAL'S EXCURSION BULLETIN

April 26 to Nov. 30.

JAMESTOWN TERCENTENNIAL EXPOSITION
15-day ticket, \$35.00.
60-day ticket, \$43.95.
Season ticket, \$50.50.
May 30 to June 3.

ATLANTIC CITY, N. J...... **\$34.00**
Annual Meeting American Medical Association.
May 12 to 16 and 19 and 20.

COLUMBUS, OHIO..... **\$29.00**
General Assembly Presbyterian Church of America.
July 4 and 6.

SARATOGA SPRINGS, N. Y...... **\$31.15**
Triennial Conclave Knights Templar.
July 11 to 18.

PHILADELPHIA, PA...... **\$32.75**
Annual Meeting Benevolent and Protective Order of Elks.
STEAMSHIP tickets to all points.

Detailed information gladly furnished upon application at City Ticket Office, 1403 Farnam St., or write, SAMUEL NORTH, District Passenger Agent, Omaha, Neb.

BEWARE!

WHEN alighting from a street car never pass behind it without making sure that a car is not approaching from the opposite direction. Failure in this precaution may result in fatal injuries.

ASSIST US IN AVOIDING ACCIDENTS

Omaha & Council Bluffs Street Railway Co.

DR. BRADBURY, Dentist, 16 Years same location

1506 FARNAM ST., OMAHA. Phone Douglas 1756

Extracting..... **20c**
Porcelain Fills..... **\$1 up**
Crowns..... **\$2.50 up**
Bridge Work..... **\$2.50 up**
Plates..... **\$2.00 up**

We make a specialty of metal and rootless plates. Painless work in all operations. Work guaranteed 10 years.

NAMING THE DAY

is the important event of every young man's life. This calls for a diamond ring—and after while a plain ring. We'd like to sell both to you. Spend a few minutes in our store. LOOK FOR THE NAME.

S. W. LINDSAY, Jeweler
1515 Douglas Street.

Superfluous Hair Removed
Shampooing, Hair Dressing and Massaging. Hair kept in wave with Haxley's Unique Curline. Manufacturing for both Ladies and Gentlemen.

BAILEY & MACH DENTISTS
Third Floor, Paxton Block
Highest Grade Dentistry.

MRS. M. S. PIERCE
408 3RD BUILDING.
The Twentieth Century Farmer
Reaches the Poultry Palace.

PATENTS that PROTECT
U. S. P. A. LLOYD, Washington, D. C. Estab. 1888.