

TIMELY REAL ESTATE TALK

Chicago Great Western Buys Lots and Heads Off Law Suit.

MUCH ACTIVITY IN RESIDENCE PROPERTY

Transactions of the Week Have Mostly to Do with the Sale of Sites for Homes or Investment.

Among the important developments in real estate during the last week was the acquisition of a number of lots by the Chicago Great Western railroad...

Most of the lots bought are on Nineteenth street, with only one on Twentieth street, and were alleged to be damaged by the deep cut necessary for the right-of-way...

Much activity has been displayed during the last week in real estate in the western residence section of the city and frequent sales were reported.

Another transaction in the West Farnam street district was the sale of the six-room modern house at the southeast corner of Forty-first and Farnam streets to George J. Morris for \$4,000 by Shimer & Chase.

Webster Groves bought the large lot and house near the northwest corner of Thirty-second and Cass streets from Henry H. Mellbury for \$3,000 and a lot adjoining that of Mr. Groves was sold last week for \$1,100 as an investment.

Charles J. Charles has secured title to his home, bought some time ago at 823 Harney street for \$5,500, for which deeds were recorded early last week.

Contrary to a report that has gained circulation that the real estate holdings of the late Count Creighton were to be thrown on the market for sale within the next week or ten days, it has been authoritatively stated by John Daugherty, representing the Creighton Real Estate company...

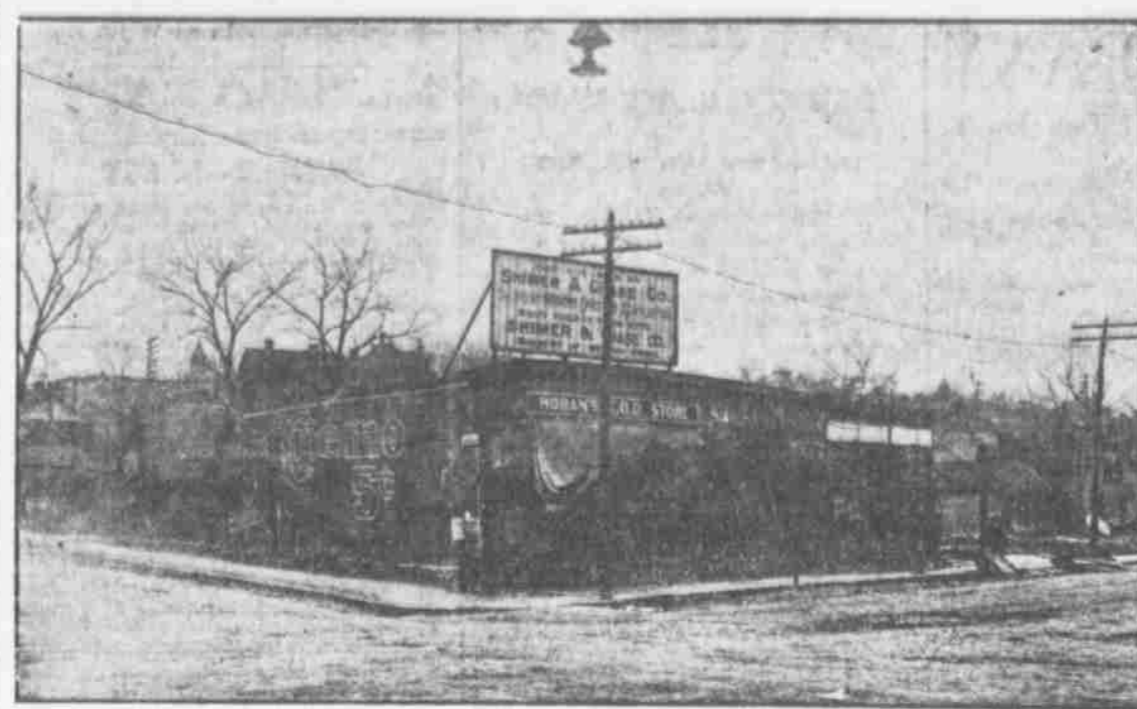
The Payne Investment company reports the following sales for the week: The eight-room house of Constance M. Bell at 453 Franklin street to George Marshall for \$2,000; a lot at Forty-second and Cummin, from Joseph O'Hanlon to Lulu M. Little, for \$700...

An important sale of small factory property is that reported by George & Co. of the three-story brick factory and large lot at the southeast corner of Twenty-eighth and Boyd streets, which was formerly occupied and owned by the On Time Yeast company.

Business property on Leavenworth street will receive a decided impetus with the improvements contemplated to the large tract owned by the estate of Miss Rogers on Leavenworth between Nineteenth and Twentieth streets.

Swedish Corn Tariff Lower. STOCKHOLM, Sweden, April 27.—The first Chamber of Parliament today adopted the report of the committee reducing the duty on unground maize.

Two Down Town Building Sites Now Prominently Before the Public



WHERE THE Y. W. C. A. BUILDING WILL STAND.

deep. A bluff, about twelve feet in height at the highest point, will be removed, when the tract will be platted and placed on the market.

Mrs. Charlotte M. Davis has contracted with Architect J. B. Mason for plans and specifications for a new \$250 residence, which will be erected this spring on her lot at 22 North Forty-second street.

A new residence subdivision in the Hancock park district to be known as Luna park has been opened and placed on the market by the sale of an acreage tract near Thirty-sixth and Marcy streets by Mrs. Mary H. Dundy, widow of the late Judge Dundy, to Frank D. Brown.

G. M. Wright has bought the modern street and a half frame house at 3315 Hamilton street, through J. H. Dumont & Son, for \$2,700. The property was bought as an investment and has a monthly rental of \$28.

As soon as a suitable site with ample yard space and trackage can be secured the main yards and distributing warehouses of the Bowman-Krans Lumber company of Sioux City will be removed to Omaha and several sites are now under consideration by officers of the company with a view to purchase or lease.

The local order of the Sisters of the Sisters of the Good Shepherd bought four lots last week comprising the entire block on the north side of Jackson street between Thirty-ninth and Fortieth streets.

The house trade of local dry goods jobbers continues very good. Order business has also been very satisfactory, both direct from merchants and from traveling salesmen.

Final payment of the purchase money on the large lot at the southwest corner of Eighteenth street and Capitol avenue, recently bought by the localerie of Eagles for a site for a new fraternal home, was made Thursday and a clear title acquired to the premises.

Swedish Corn Tariff Lower. STOCKHOLM, Sweden, April 27.—The first Chamber of Parliament today adopted the report of the committee reducing the duty on unground maize.

TRADE CONDITIONS IN OMAHA

Weather Conditions Have Diverse Effect Upon Local Jobbing Trade.

DRY WEATHER HURTS IMPLEMENT TRADE

Shoe and Implement Jobbers Report Late Spring of Dry Weather Has Affected Sales in Their Lines.

Weather conditions have been the important factor in the trade of Omaha jobbing houses during the last week, and the cold, dry weather prevailing in most sections covered by the most jobbers has affected some lines seriously, while other lines have noticed little change in the volume of trade.

Few outside merchants have visited the trade during the period under review, but the orders received by salesmen in most lines of trade have more than made up for the falling off in this particular.

The partial failure of the wheat crop in Kansas and Oklahoma, caused by the unusual dry weather prevailing this spring, has caused serious harm to the trade of harvester jobbers, who have been taken from the field on this account.

The shoe trade in implement lines is very quiet, due to the unseasonable weather, which has been cold and dry with the exception of a few showers recently.

The house trade of local dry goods jobbers continues very good. Order business has also been very satisfactory, both direct from merchants and from traveling salesmen.

The shoe trade has suffered slightly because of the backward spring, with the usual dry and cold weather prevailing. The cold weather has resulted in lighter sales of summer goods, and the volume of sales are far in advance of those of last year for the same period.

Swedish Corn Tariff Lower. STOCKHOLM, Sweden, April 27.—The first Chamber of Parliament today adopted the report of the committee reducing the duty on unground maize.

MILWAUKEE GOES TO SEATTLE

Work May Be Delayed Until Cost of Labor and Material is Cheaper.

NEW YORK, April 27.—The Tribune today says: At a meeting of the directors of the Chicago, Milwaukee & St. Paul, held this week, the question of the company's Pacific coast extension was discussed.

When recently seen, the president of the St. Paul company said chances favored the abandoning of the coast extension as a result of restrictive legislation.

HEAVY SNOW AT MITCHELL

Telephone and Telegraph Wires Are Damaged by South Dakota Storm.

MITCHELL, S. D., April 27.—(Special Telegram.)—This section was visited by a heavy snowstorm last night and this morning, which was preceded by a light rain.

Now is the time to make your wants known through The Bee Want Ad page.

WHERE THE Y. W. C. A. BUILDING WILL STAND.

SIXTEENTH AND HARNEY—THE HIGHEST PRICED VACANT LOT IN OMAHA.

It is between seasons for this vegetable, but it will soon be plentiful. Quantities of new potatoes are being received from Texas and as the quantity increases the price next week will be appreciably lower.

The potato market will be higher and high-class grades are becoming very scarce. Navel oranges continue to rule strong, with no prospect for any depreciation in value this season.

The general volume of the grocery trade has been unusually good and exceeds the volume of that of 1906 materially. Prices on refined sugar are practically the same as those of last week, although the San Francisco dealers have advanced prices 20 cents per hundred pounds during the week.

Now is the time to make your wants known through The Bee Want Ad page.

FINEST TRAIN FOR BIG TOUR

Pullman Caravan Ordered to Accommodate Commercial Club Excursion.

NO MORE OBJECTION TO ITS LENGTH

J. W. Lammiman Wins First Prize for Design of Cover to Book Booming the Big Jaunt.

Objection to the length of the Commercial club's "Great Northwest" excursion appears to have subsided, but the time consumed will be reduced without sacrificing any of the territory covered.

Many Plans Submitted. Many elaborate designs were submitted under the competition, by which the winner will receive a prize of \$25, but the design of Mr. Lammiman was peculiarly adaptable to the uses of the trade excursion.

The present in Omaha is represented by a large picture of the wholesale district, which shows Omaha in the shape of "The Market Town," shown in the shape of a panel outlining the boundaries of the state.

FATAL WRECK IN ILLINOIS

CARMEI, Ill., April 27.—The breaking of the truck on an engine pulling a Big Four freight train caused a wreck south of here today, killing Charles Weston, brakeman, and C. A. Curran, fireman.

JAP-A-LAC advertisement featuring the brand name in large stylized letters and the slogan "WEARS LIKE IRON." Below the name, it says "THE ORIGINAL STAIN AND VARNISH COMBINED" and "The greatest factor in housekeeping economy."

Advertisement for Jap-a-lac furniture. It lists colors like "OX-BLOOD RED, MALACHITE GREEN, OAK or NATURAL JAP-A-LAC." and describes the product as "PORCH FURNITURE becomes dull and marred in one season's use." It includes an illustration of a woman sitting on a porch chair.

Advertisement for Jap-a-lac window displays. It says "Watch for the Jap-a-lac window displays in all first class stores!!" and "Headquarters for Jap-a-lac THE BENNETT COMPANY".

Advertisement for Pearl Wire Cloth and Goodrich Hose. It features an illustration of a fly and a hose reel. Text includes "Flies Don't Know the Difference Between Pearl Wire Cloth and Common Wire Cloth" and "THE GOODRICH HOSE".

Advertisement for JAS. MORTON & SONS CO. Hardware and Tools. It lists various tools and their prices, such as "15-inch... \$2.75" and "14-inch... \$3.00".