

The Bennett Company

30 Telephones

Douglas

137

Common Sense Trading

Has Its Greatest Force in Buying Things You Need at the Right Time, at the Right Place, at the Right Price. Merchandise that's dependable and satisfactory is the only kind of merchandise this great store will handle. Nor do we seek to attract you by ridiculous exaggerations, preposterous claims or "hot air." You can get enough of that elsewhere in this newspaper. Come Saturday to the right place for the right thing at the right price. Here! Here! where everything is all right, all right. Big money-saving in it, too!

BIGGEST CLEARANCE SALE OF THE SEASON IN

Furniture, Carpets and Draperies

NOISILY GOING ON ON OUR THIRD FLOOR

IT'S THE BIG GREEN TAG SALE!

GIVES YOU A SAVING FROM 25 TO 50 PER CENT WITH DOUBLE GREEN TRADING STAMPS THROWN IN

Extraordinary reductions throughout the entire line—Furniture, Rugs, Carpets, Linoleums, Lace Curtains, Draperies, etc., etc.

A Special for Saturday
CARPET SWEEPER.
worth \$2.25 at . . . **\$1.39**

Children's Coats—Half Price



Bearskins, Velours, Velvets, Cheviots and Broadcloths, 2 to 14 years. This is no job offered you, but our regular stock. Not a garment reserved.

\$2.50 Coats for \$1.25
\$3 Coats for \$1.50
\$4 Coats for \$2.00
\$5 Coats for 2.50
Silk, Velvet and Bearskin Hoods, all colors and sizes:
1.00 Caps for .60c
79c Caps for .49c
50c Caps for .33c
Children's Department, Second Floor.



Saturday Waist Special
\$1.25 Fine Saxony Flannel Waists, pleated fronts and piped in taffeta, fancy stock and cuffs, regular \$5.95 waist—Saturday, special at **\$2.95**

Women's Special Coat Offerings for Saturday

110 Fancy Mixture Coats, 50 in. long, notched velvet collar, regular \$10 value, Saturday **\$4.95**

Women's Fine Kersey Coat, 50 in. long, half satin lined, regular \$15 value, Saturday, special. **\$7.48**

All Small Furs About Half Price. Sable Fox Scarfs, regular \$6.50 value, Saturday **\$3.95**

Sacrifice Clothing Sale!

THE Vollmer Clothing Company's Lease expires April first. They move out then; their stock must be turned into cash. Notice the Sacrificing Prices:

Any Overcoat in the House, sizes 33 to 44, values to \$20.00, at **\$10**
Any Black or Blue Suit, values up to \$20.00, sizes 33 to 44; a suit, at **\$10**

500 Odd Suits, values to \$12.50, sizes 32 to 42, at **4.98**
DUTCHESS TROUSERS
20% Discount

\$1.75 Young Men's Vests, values to \$2.50; sizes 32 to 38, at **98¢**
Children's Suits, Overcoats and Reefers, values to \$9.50, at **\$3.98**
Men's Wool Underwear, including union suits, values to \$2.50 a garment, at **98¢**
Boys' and Children's 50c Caps, at **25¢**
Men's Caps, 75c and \$1.00 values, for **48¢**
Men's Caps, values to \$2.00, at **98¢**
Our big line of Men's and Boys' Hats, values to \$1.00, at **48¢**
50 dozen Men's and Boys' Tuxedo Hats, values to \$2, at **98¢**
Silk Suspenders—Half price and 50 green trading stamps.

Knit Underwear for Saturday

The startling low prices announced at the beginning of our great white goods sale—particularly those prices applying to knit underwear—are

CUT CLOSER THAN EVER

Here you have dependable, wearable knit underwear—a temptation to the economical to lay in an entire season's supply.

Ladies' Wool and Cotton and All Wool Union Suits—Broken sizes, worth up to \$2.50, to close, a suit. **69¢**
Ladies' Fleeced Cotton Union Suits—50c value, a suit, Saturday, at **35¢**
Ladies' Ribbed Wool Plaited Vests—65c value, to close—will go at **33¢**
Ladies' Ribbed Fleeced Cotton Vests and Pants—25c value, to close, each **15¢**
Children's Ribbed Fleeced Union Suits—Medium weight, drop seat, 25c value, to close, a suit **15¢**

Muslin Underwear Sale Continues

Saturday's Special Offering

Corset Covers and Drawers, made extra full, trimmed in lace and cluster tucks, each 19c.
Muslin Skirts, extra full body, 3 1-2 yard ruffle of embroidery, 18 in. wide, headed with fine tucks, regular \$2.00 value, Saturday special, 98c.



Picture Department That 20 Per Cent Discount Sale

All Purchase Slips Show Your Amount of Discount.

20 Per Cent Discount on Picture Framing, Framed Pictures in Galleries, Pyrography Materials and Fancy Mirrors.
Extra Specials—Saturday:
20 Per Cent Discount on all China, Water Color and Oil Paints,
20 Per Cent Discount on Water Color, Pastel and Oil Papers.
Metal Frames
100 Odd Metal Frames, various sizes, slightly damaged during the holidays, values up to \$5, on sale Saturday, 69c.
PYROGRAPHY SPECIAL—Circular Boxes, neat designs, for beginners, each 10c.

IN SHOES Children's, Day IN SHOES

INFANTS' SHOES—Comfortable! Let baby's feet grow naturally; hand turned, laced or button, in kid and patent leather, 60c value at, pair **43c**

Boys' Storm Calf Shoes—Best wearing shoes made to keep healthy boys healthy, and unhealthy boys feet dry, sizes up to 2 at \$1.69; sizes 2 1/2 to 5 1/2, pair **\$2**
And fifty Green Trading Stamps.

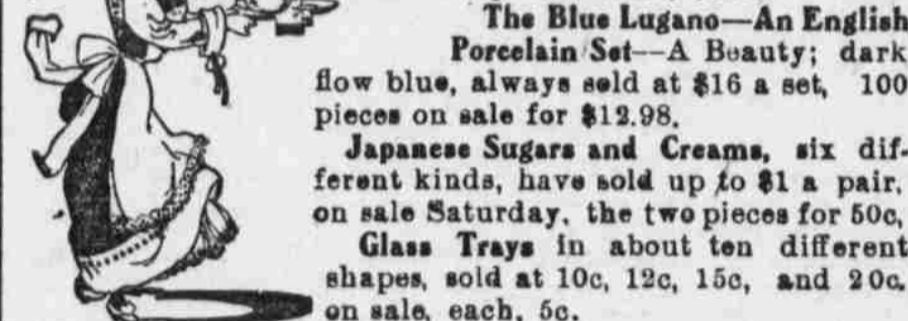
Women's Warm Lined Shoes—Laced, plain toe and patent tips, good for cold feet, \$1.75 and \$2 values, for **1.37**
And fifty Green Trading Stamps.

For Dances and Parties—A pair of those dainty patent colt, ties or three-strap slippers, pair **2.50**

CROCKERY

DINNERWARE of QUALITY at Reduced Prices for Saturday

10 Per Cent off on any sale—sets or open stock—some sets greatly reduced, such as:
100 Pieces in the Kent, Pink and Gold Patterns, full number of pieces, a set, \$7.98.
The Blue Lugano—An English Porcelain Set—A Beauty; dark flow blue, always sold at \$16 a set, 100 pieces on sale for \$12.98.
Japanese Sugars and Creams, six different kinds, have sold up to \$1 a pair, on sale Saturday, the two pieces for 50c, Glass Trays in about ten different shapes, sold at 10c, 12c, 15c, and 20c, on sale, each, 5c.



Tulip Jugs—a large jug with blue, yellow and red tulips, regular 35c value, Saturday each 18c.

Specials in Hardware—Saturday

20 per cent discount on any base burner or soft coal heating stove.
Regular 25c Standard Bread Toaster **15¢**
Regular 24c Braided Clothes Line for **15¢**
Extra nice Japanned Mail Boxes, with lock and 2 keys **\$1.25**
And Thirty Green Trading Stamps.
Wash Boiler, all kinds, prices up from **96¢**
And Forty Green Trading Stamps.
Scrub Brushes, extra quality **10¢**
And Ten Green Trading Stamps.
Ladies' 95c Ice Skates, special **75¢**
See Our Special Table of 10c Items.

Bennett's Big Grocery

SATURDAY BARGAIN LIST. ORDER EARLY IF POSSIBLE TO AVOID DELAY IN DELIVERY

Bennett's Capitol Flour per sack \$1.40
And Seventy-five Green Trading Stamps.
Corn Meal, yellow or white, 10c each, 15c
And Twenty Green Trading Stamps.
Navy Beans, finest, 12 1/2 lb. for \$1.10
Bennett's Best Coffee, three pounds for \$1.00
And 100 Green Trading Stamps.
Teas, any kind, 1 lb. 60c
And Fifty Green Trading Stamps.
Milk Cans, 10c; do. cans \$1.00
Genesee Tomatoes, full weight can, 10c
"Best We Have" Early June Peas, can, 10c
Uneda Buscaccia package \$1.15
CHEESE
Full Cream Cheese, pound 50c
And Ten Green Trading Stamps.
Swiss Cheese, domestic pound 25c
And Twenty Green Trading Stamps.
Royal Luncheon Cheese, Jar \$1.40
And Ten Green Trading Stamps.
BUTTER—Selected Dairy from Finland—Fresh Country Roll Butter—pound 55c
Bulk Mince Meat, pound 10c
And Ten Green Trading Stamps.
Bennett's Capitol Premium Chocolate, pound 25c
And Twenty Green Trading Stamps.
Diamond 2 Chili Sauce, bottle 25c
And Twenty Green Trading Stamps.
Golden Queen Corn, three cans 25c
Diamond C Soap, per bar for 25c
Bennett's Capitol Wheat two pkgs. for 50c
And Ten Green Trading Stamps.
Bennett's Capitol Oats, two pkgs. 50c
And Ten Green Trading Stamps.
Bennett's Capitol Raisins, 1 lb. 10c
And Ten Green Trading Stamps.
Currants, cleaned, pound 10c
Seedless California Raisins 1 lb. 10c
Seedless Raisins, package 10c
California Prunes, per lb. 8c
Japan Rice, four pounds 85c
And Twenty Green Trading Stamps.
Jell-O assorted, three pkgs. 55c
And Ten Green Trading Stamps.
Lincoln Butterine, two lbs. 85c
And Five Green Trading Stamps.
Jersey Butterine, two lbs. 85c
And Five Green Trading Stamps.
Premium Butterine, two lbs. 60c
Granulated Sugar—Double Green Trading Stamps.
Bennett's Capitol Mince Meat, three packages for 85c
And Ten Green Trading Stamps.
Sour Pickles, quart 10c
And Ten Green Trading Stamps.
Chow Chow Pickles, quart 15c
And Ten Green Trading Stamps.
Stuffed Olives, pint 25c
And Ten Green Trading Stamps.
Small Sour Pickles dozen 5c
MEATS
BEST GRADES AT LOWEST MARKET PRICES—EVERYTHING GUARANTEED.
Fresh Pork Shoulder Roast, lb. \$1.40
Fresh Spare Ribs, three lbs for 25c
SPECIAL ON BACON AND LARD:
Morrell's Iowa Fresh Bacon, backs selected light narrow strips, average 5 to 6 lbs., on sale, lb. 16c
\$2.00 lbs. Morrell's selected narrow and lean Bacon, small strips, pound 15 1/2c
LARD SPECIAL:
Thirty Green Trading Stamps with each 5-lb. and 10-lb. Fall Lard; any brand, at our regular price.
FISH
New Holland Herring, just in, per keg 75c

GREATER OMAHA BILL READY

Measure Providing for Consolidation About Finished by Eren.
GOES TO REPRESENTATIVE LEE SATURDAY
Provision Enables Mayor and Council to Increase Total Funds from Million to Million and Quarter.

Attorney J. P. Eren Saturday afternoon will have ready for delivery to Representative Miles Lee a draft of the Greater Omaha bill to be introduced in the legislature. Accompanying this bill will be several amendments and changes on the city charter, these suggestions being what are thought necessary for Omaha regardless of any consolidation proposition.

thus making the charter of sufficient elasticity to meet any contingency in the event of consolidation before the next legislature meets.
The Real Estate exchange and Commercial club have been active in figuring out the present needs in the way of increased appropriations for fire, police, park and engineering departments of Omaha. The proposed plan is to have a charter provision that the maximum amount to be set aside for the engineering department shall be \$125,000, which sum shall cover not only the engineering department as it is now operated, but include all present operations of the street commissioner's office, making the two departments virtually one. Funds used by these two departments during 1906 amounted to \$170,440, and apportionments set aside for this year for the same departments aggregate \$142,000, the difference in those sums being due to Mayor Dahlman's cut of \$30,000. The proposed \$125,000 total for the two departments is about \$22,000 more than was allowed in 1906.
Division of Funds.
Just how the \$125,000 should be divided among the various departments of the engineer's office is a matter which is left for the council to decide on just as they have been apportioning the general fund of

\$268,000 through the various departments. It is proposed to make the police and fire funds \$150,000 each, the charter at present allowing the former \$115,000 and the latter \$175,000. No change has been suggested in the lighting fund, which is now specified in the charter at \$20,000. The park fund, according to the proposed changes, should be raised from \$30,000 to a minimum of \$75,000 and maximum of \$100,000, although it is believed those figures will be changed to \$50,000 and \$75,000, respectively, before the amendments are offered for consideration at Lincoln.
No change is contemplated in the library fund, which now stands at \$22,000.
With the additions mentioned to engineering, police, fire and park funds (considering the last at \$50,000), there would be added to present running expenses of the city \$125,000. The proposition is to add \$150,000, adding the difference of \$25,000 to what is known as the general fund. The charter now authorizes the city to raise by taxation a gross sum of \$750,000 for general purposes and \$250,000 for sinking fund. The additions mentioned would increase the total amount to be raised to \$1,000,000, or \$250,000 more than Mayor Dahlman expects to run the city on this year.

The Greater Omaha bill, as already drafted, provides that whenever a city of the first class shall adjoin the boundary lines of a metropolitan city for the aggregate distance of a mile the city of the first class shall become part of the metropolitan city upon the filing with the governor of a certificate by the county surveyor stating that the boundary lines adjoin in the manner stipulated. Omaha and South Omaha boundary lines adjoin for over two miles. The bill mentioned contemplates consolidation by legislative enactment in a manner similar to that which has been accomplished in many parts of the country, Kansas City being an instance.
The bill provides that the governor shall issue a proclamation, and if that is issued four months or more before the date of the regular state and county election within the year then the city council of the metropolitan city shall have power and it shall be its duty to divide the consolidated territory into twelve wards, and at the next election, as provided for in the act, an election shall be held throughout the consolidated territory.
Should an election be held next November under this bill the South Omaha officials would only be cut off of four months' service.
The rest of the bill contains legal provisions such as turning over public property,

GOVERNMENT IS IN EARNEST

Assistant Attorney General Sure Public is Aware of that by Now.

Special Assistant Attorney General M. C. Burch of Washington is in Omaha enroute to the west on business connected with the investigation of land matters. Mr. Burch visited District Attorney Goss and Special Assistant District Attorney Rush at the federal building Friday morning for a brief conference.
"There is no significance in my visit here," said Mr. Burch. "I merely stopped over for a short visit and will proceed west this afternoon. I just learned of the arrival of the Modists this morning while on the train. Mr. Rush and Mr. Goss have made an excellent fight, but it is hardly to be expected that they should win all of them. The trial has shown one very important thing, and that is that the government is in deadly earnest in the prosecutions of all violations of the land laws, and I venture the observation that these parties will not take any more chances to obtain control of public lands."

COUNTY NOT SO EASY NOW

Commissioners Hesitate Before Surplus Bids of Ice Trust and Printers.

Let the taxpayers of the county drop their load of dull care at the threatening prospect of being taxed usuriously by the ice trust for supplies of the congested summer months to the county institutions this summer. The commissioners have not yet let the contract. The ice trust wants 25 cents a hundred for ice delivered to the court house and county jail. This is \$7 a ton. Coal is almost as cheap and doesn't melt as fast while the delivery man is carrying it from the wagon to the houses.
Those who are in a position to know wink the eye and those who have observed the campaign of economy now being conducted by the commissioners and the county

GOVERNMENT IS IN EARNEST

Assistant Attorney General Sure Public is Aware of that by Now.

Special Assistant Attorney General M. C. Burch of Washington is in Omaha enroute to the west on business connected with the investigation of land matters. Mr. Burch visited District Attorney Goss and Special Assistant District Attorney Rush at the federal building Friday morning for a brief conference.
"There is no significance in my visit here," said Mr. Burch. "I merely stopped over for a short visit and will proceed west this afternoon. I just learned of the arrival of the Modists this morning while on the train. Mr. Rush and Mr. Goss have made an excellent fight, but it is hardly to be expected that they should win all of them. The trial has shown one very important thing, and that is that the government is in deadly earnest in the prosecutions of all violations of the land laws, and I venture the observation that these parties will not take any more chances to obtain control of public lands."

COUNTY NOT SO EASY NOW

Commissioners Hesitate Before Surplus Bids of Ice Trust and Printers.

Let the taxpayers of the county drop their load of dull care at the threatening prospect of being taxed usuriously by the ice trust for supplies of the congested summer months to the county institutions this summer. The commissioners have not yet let the contract. The ice trust wants 25 cents a hundred for ice delivered to the court house and county jail. This is \$7 a ton. Coal is almost as cheap and doesn't melt as fast while the delivery man is carrying it from the wagon to the houses.
Those who are in a position to know wink the eye and those who have observed the campaign of economy now being conducted by the commissioners and the county