

DECORATIONS OF THE HOME

Beauty and Comfort Combines with Use, Convenience and Strength.

SOME SUGGESTIONS ON HOUSE HARDWARE

Designs in Door Knobs and Other Fittings that Harmonize with Architecture and Decorations and Add Elegance to All.

As the art of building has developed through the various stages from the crude primitive shelter from the elements dug in the hill side or rudely fashioned from boughs or stone...

And not satisfied with merely concealing the necessary unattractiveness of the conveniences of these utilities, the modern builder demands that each and all of them shall enter into a general harmonious scheme that in turn must follow some general style of architecture employed in the building...

And in no part of the house is professional judgment more essential than in the selection of these fittings and fixtures. Consistency is the main essential and only educated judgment can be relied upon to secure this.

Considering the time, the money and the intelligence that is expended on the production of this branch of interior decoration, there seems little excuse for anything but perfect harmony, and some small idea of this expenditure may convey to the average person a better appreciation of its value.

One design or pattern may be modified for use on every bit of ornamental hardware employed in a room—the door knobs, plates and hinges, the window lifts and boxes or the door pullers...

These various designs are carried out in from ten to a dozen different finishes and metals. There are the wrought steel, the cast iron, the wrought bronze, the cast brass, brass and even glass, and these are treated to a variety of finish.

LAST CHANCE TO DRAW OUT

Monday Candidates Who Want to Get Off Ticket Can Still Do So.

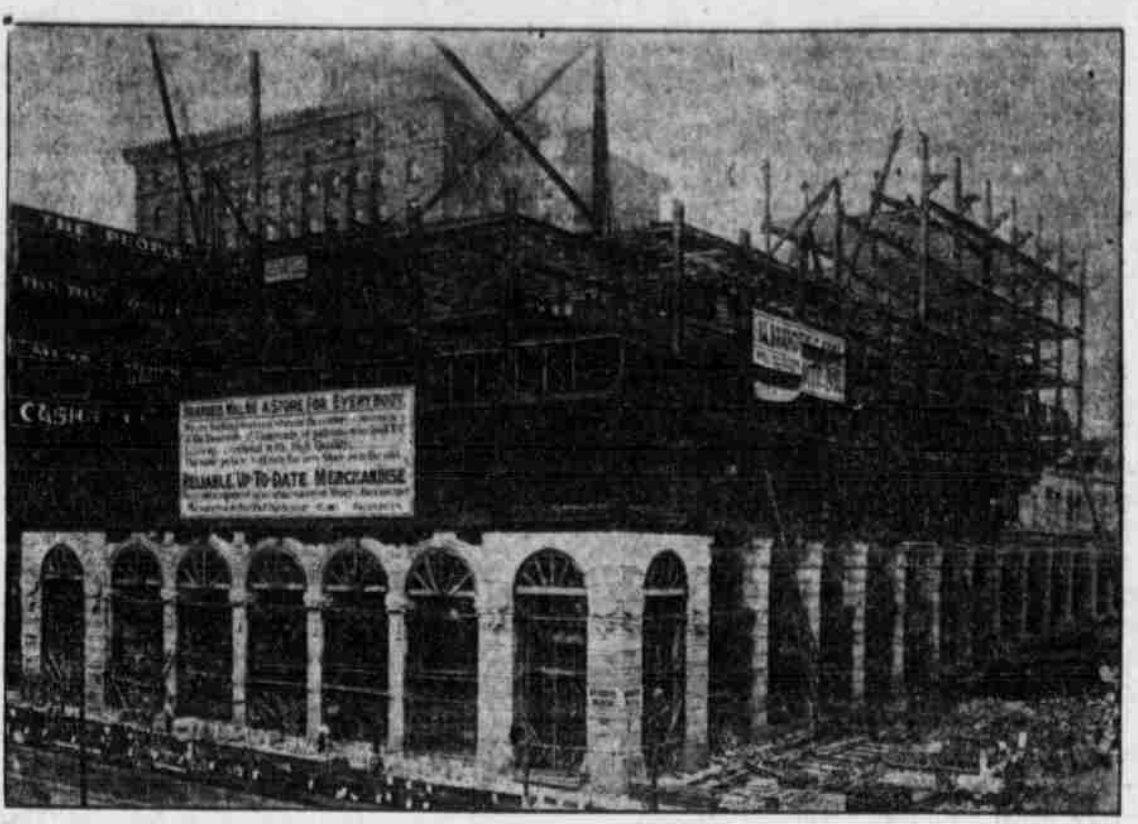
County Clerk Haverty will keep his office open the greater part of the day Monday in order to enable candidates who have filed for places on the primary ticket to withdraw if they desire.

Mrs. J. D. Weaver was slightly injured at 7th and Howard streets Saturday morning by the collision of a runaway horse and a motor car.

Pictures That Show Progress Made on Two Prominent Omaha Blocks



Y. M. C. A. BUILDING.



BRANDIS' BLOCK.

MONEY AND MUSCLE AT WORK

San Francisco Rising from the Ruins as Fast as Essentials Can Do It.

LABOR IN DEMAND AT HIGH WAGES

Able-Bodied Male Beggers Ordered to Go to Work or Go Hungry—How the Underserving Prey Upon Charity.

According to the report of the clearing house, San Francisco reached sixth place in the commercial world the second week in August...

And in no part of the house is professional judgment more essential than in the selection of these fittings and fixtures. Consistency is the main essential and only educated judgment can be relied upon to secure this.

The person who insists upon installing fixtures merely because they are handsome or costly does not to be considered independently, and it is their careless selection that is often responsible for the hopeless cheapening of many a home that has cost enough to have secured better results.

From all parts of California come reports of increasing business. It is reported from the interior cities that business has increased greatly beyond that before the fire, and this general prosperity is felt to be the reflex of conditions in the metropolis.

Hotel accommodations are good, and increasing. With the opening of the new Palace on Leavenworth and Post streets, there are to be some material additions to the accommodations, and with the completion of other hotels of a more permanent character, which are now under construction, San Francisco will soon win back her old reputation as a hotel city.

Conditions among the refugees in San Francisco have improved so materially that it has been decided to move all those who are dependent upon the relief fund into one camp at least from kitchen instead of distributing supplies.

At the beginning of last week a new policy was inaugurated by the relief board for the purpose of ridding the relief camps of able-bodied male idlers.

At the beginning of last week a new policy was inaugurated by the relief board for the purpose of ridding the relief camps of able-bodied male idlers.

County Clerk Haverty will keep his office open the greater part of the day Monday in order to enable candidates who have filed for places on the primary ticket to withdraw if they desire.

TIMELY REAL ESTATE TALK

Weas of the Renter Due to Death of Available Houses.

DEMAND FAR EXCEEDS THE SUPPLY NOW

Omaha's Population Grows Faster Than the Capacity to House Them, Despite the Great Activity in Building.

"People are awful picknickety about their houses these days," said a woman the other day as she walked out of a real estate office, unsuccessful in an attempt to rent a house for herself and family.

"Well, you can't get a house without recommendations, that's all! I went to five or six offices before I found a house at all and when I did find one for rent a hundred questions were asked me."

This might have been an exceptional case, but the incident actually happened, and it is true that landlords are more particular than ever before about the sort of tenants they get.

Omaha needs more houses, say the realty men, in chorus. Its population is growing faster than houses are being built to accommodate it.

ROUTE OF THE MILWAUKEE

Course of Road from Missouri River to Washington is Now Outlined.

ST. PAUL, Sept. 1.—W. B. Dixon, northwestern passenger agent of the Chicago, Milwaukee & St. Paul railroad, today gave the first official statement as to the route to be followed by the railroad in building its extension west from Glenham, S. D., to Butte, Mont.

From there it will run into Custer county, Montana. The road crosses the Northern Pacific at Terry, Mont., and parallels that road and the Yellowstone river to Miles City and Forsyth; then it strikes off in a northwesterly direction to the Musselshell river to Harlowtown and Lombard.

From Lind the line will follow the survey of the old Northern Pacific cut-off from Lind to Ellensburg.

GAIN IN BUILDINGS RECORD

August Shows Up Eleven Per Cent Stronger Than Same Month Last Year.

August in the city building department shows a gain of 11 per cent in the value of construction authorized during the month over August of 1905.

Fire Loss Increases Merely. KANSAS CITY, Sept. 1.—Arnold Lieberman, owner of the stock of dry goods in the building at Armourdale, Kan., near here, that was destroyed yesterday, the result of an explosion, and for whom the police were looking, was found last night. He had gone to bed undisturbed by the loss. Lieberman denied that he had anything to do with the explosion. He was not arrested.

ICE MEN FINED IN COURT

John A. Doe and His Company Fined for Giving Short Weight.

NO TROUBLE TO PROVE CHARGES

Two Witnesses Show They Were Cheated on Purchases from Omaha Ice and Cold Storage Company.

John A. Doe, the iceman, was fined \$25 and costs on two counts, and the Omaha Ice and Cold Storage company, of which he is president, was fined \$25 and costs on the same counts, making \$100 which will have to be paid by the company and its president for dealing in short weights.

The fines were administered by Acting Police Judge Cockrell Saturday morning. To make his case, Tom Lee, city prosecutor, had only two witnesses, but they were good ones, Mrs. C. W. Ackerman, 3838 Lincoln boulevard, and C. L. Ransom, 3531 Lafayette avenue.

The stockholders' meeting of the Real Estate Exchange Building company last week was barren of results, as the number present lacked four of enough to make a quorum.

A. L. Root, with N. P. Dodge & Co., reports the following sales within the last ten days.

House and two acres of land in Benson Heights, north of Krug's park, to T. W. Maran for a home, \$1,600; two three-story brick flats at Twentieth and Spruce streets to Ella M. Tschuck for an investment, \$2,800; house and lot at 2821 Miami street, to Peter Jensen, Jr., for a home, \$1,500; house and lot at 423 Burdette street, as an investment, to S. A. Ehrhberg, two houses, \$413 and \$200; house and lot at 230 Decatur street, for a home, to S. E. Ehrhberg, two houses, \$413 and \$200; house and lot at 230 Decatur street, for a home, to S. E. Ehrhberg, two houses, \$413 and \$200.

BOHEMIAN TURNERS TO MEET

Hundreds of Athletes from Kansas and Nebraska to Be in South Omaha.

Hundreds of Bohemian Turners from Nebraska, Kansas and California are arriving to attend the second annual tournament of the western division of the Bohemian National Gymnastic association, to be held under the auspices of the Tel. Jed. Sokol at South Omaha September 2, 3 and 4.

The tournament will open at 8 o'clock Sunday morning and last during the day. In the evening a theatrical performance will be given. Monday a parade of Bohemian societies will be started at 1 o'clock.

BURGULARS ARE RATHER BUSY

Pat in Active Night in North Omaha, but Are Poorly Paid.

Burglars got busy out in the north end of town Friday night, but failed to make good. Entrance was gained to the residence of W. G. Maxfield, 3211 Templeton street, and \$1,500 worth of property was stolen.

More Night-of-Work. The Omaha, Lincoln & Beatrice company has acquired another strip of right-of-way outside South Omaha.

DOG AND BULLET DO WORK

Hudson is Hit in One Hand and Shot in Other, but Still in Ring.

Not content with having one hand tied up from the effects of a mad dog bite, Officer Hudson of the police department Friday night fired a shot through his other hand and now has both of them tied up, though he is still at work.

Write Derivation Charged. Mrs. C. E. Bertelson filed a complaint Saturday morning against her husband, who she claims for the last three years has been living with another woman, but to contribute to her support. Wife demands the charge. The woman said she was employed at the Meridian and supported her two children. The husband, she said, was working somewhere in town.

COUNTRY WOMEN IN CLUB

Farmers' Wives Near Ashland and South Bend Have Ideal Organization.

DOES GREAT AMOUNT OF GOOD WORK

At Annual Picnic in Wartman's Grove, Six Miles from Ashland, Old and Young Have Fine Time.

Just what a woman's club may mean to a community was admirably demonstrated last Wednesday by a picnic given by the Fairland Country Women's club in Wartman's grove about six miles from Ashland.

Last Wednesday's gathering was the second out-of-door affair of which the club has been hostess and the farmers for half a dozen miles around suspended their work and laid aside their tools to bring their families and participate in the festivities.

The first was a flag drill by a number of little girls who sang several patriotic songs to the accompaniment of "Marching Through Georgia" furnished by a mouth harp.

A basket ball game by the young women came next, the teams being uniformed in simple short, blue calico dresses and little black caps. Mrs. Wortman carried the baskets and fastened to tread and the spectators sat about in the buggies or wagons or stood about the edge to watch the game.

The club was organized two years ago by its present president, Mrs. O. J. Wortman, who had been a prominent member of the Ashland Woman's club.

Mr. Ransom said he told the driver when the ice was delivered to him that it did not weigh 100 pounds. The driver disputed the statement, Ransom said, and refused to weigh the ice again.

"Did the company do anything about it?" inquired Pratt.

"How do you know it didn't?" "Because I kept getting short weights," quickly replied the witness.

"The officers didn't tell you they had ordered the drivers to give short weights, did they?" asked Mr. Pratt.

"No, and neither did they tell me they had ordered the drivers not to give short weights," answered Mrs. Ackerman.

"Well, now, Mrs. Ackerman, you don't really know whether the company did anything after you made your complaint, do you?" They might have done something, you know?

"Well, if they did," answered the witness, "it failed to help me."

"City Prosecutor Lee asked for a conviction under the ordinance providing a penalty for short weights and measures, and with very little ado Judge Cockrell assessed the fines and the ice company and its president appealed the case."

SUITS FOR DEATHS SETTLED

Three Families Compromise for Lives Lost at Lake Manawa.

Settlement for three of the deaths caused by the disaster at Lake Manawa July 4 has been made in probate court by the Manawa Amusement company. In each case \$1,000 was paid the parents of the young women who lost their lives.

How well the club has served this purpose is shown in the fact that since its organization the members have better acquainted than for twenty years and embrace every occasion for coming together.

Wife Derivation Charged. Mrs. C. E. Bertelson filed a complaint Saturday morning against her husband, who she claims for the last three years has been living with another woman, but to contribute to her support. Wife demands the charge. The woman said she was employed at the Meridian and supported her two children. The husband, she said, was working somewhere in town.