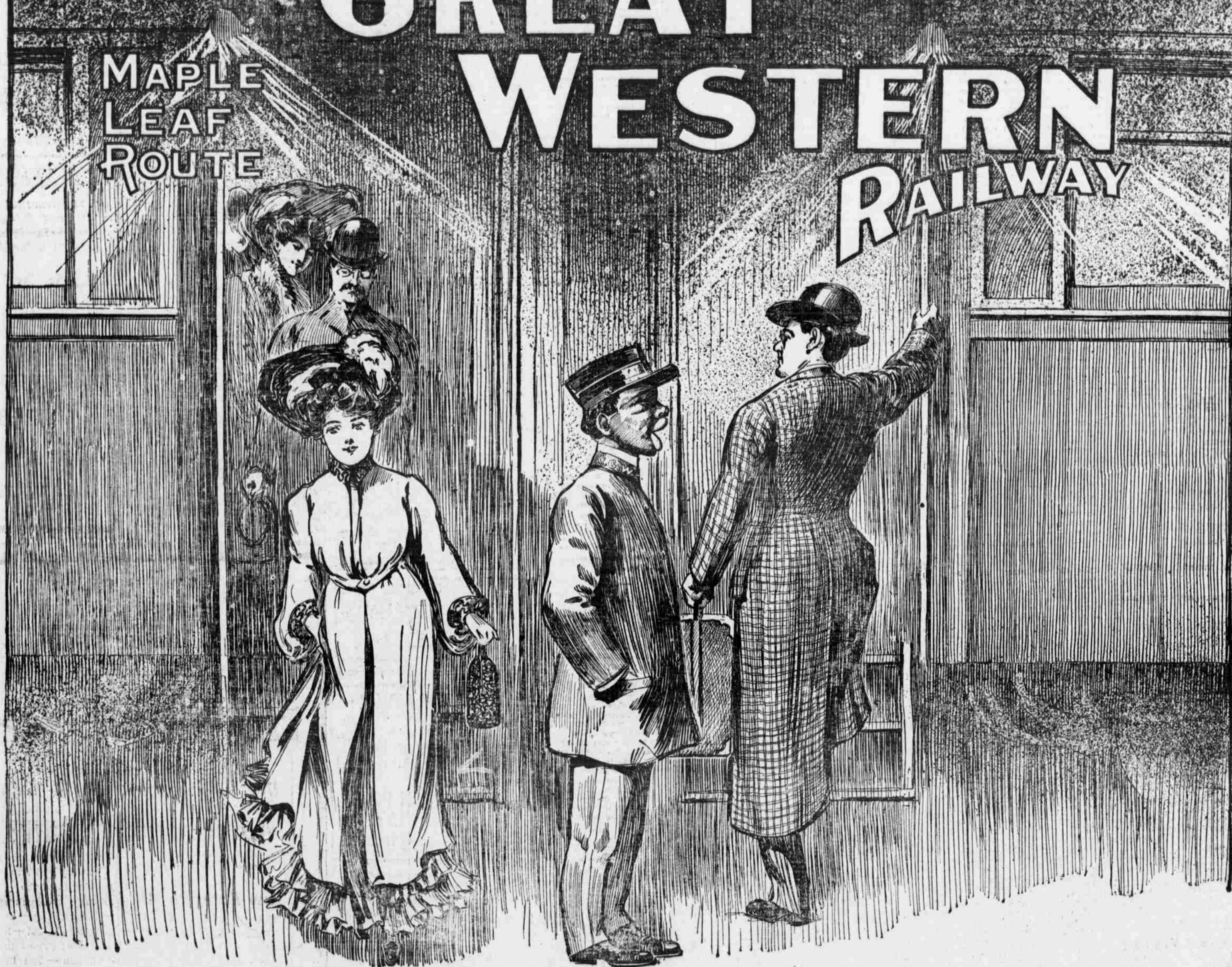


CHICAGO GREAT WESTERN RAILWAY

MAPLE
LEAF
ROUTE



COMING AND GOING

The Right Kind of People
take the "Right Road" to
St. Paul and Minneapolis

Unequaled Equipment on all trains makes traveling a luxury on the "Great Western"

"The Electric Lighted Limited"

Leaving Omaha 8:30 p. m.—Arrives St. Paul 7:20 a. m., Minneapolis 8:00 a. m.
Returning—Leaves Minneapolis 8:00 p. m., St. Paul 8:30 p. m.—Arrives Omaha 7:15 a. m.

"The Day Express"

Leaving Omaha 7:35 a. m.—Arrives St. Paul 7:38 p. m., Minneapolis 8:10 p. m.
Returning—Leaves Minneapolis 7:40 a. m., St. Paul 8:10 a. m.—Arrives Omaha 8:20 p. m.

Union Station.

Ticket Office, 1512 Farnam Street.