

Semi-Centennial Series---Leading Insurance Men



HENRY E. PALMER.



GEORGE H. PALMER.



JAY D. FOSTER.



BENJAMIN L. BALDWIN.



WILLIAM H. WYMAN.



WILLIAM P. HANFORD.



HUBERT O. BENEDICT.



ANDERSON G. BEESON.



WILLIAM E. HITCHCOCK.



JOHN C. HOWARD.



JOSEPH M. BALDRIGE.



GEORGE DODSON.



CHARLES W. MARTIN.



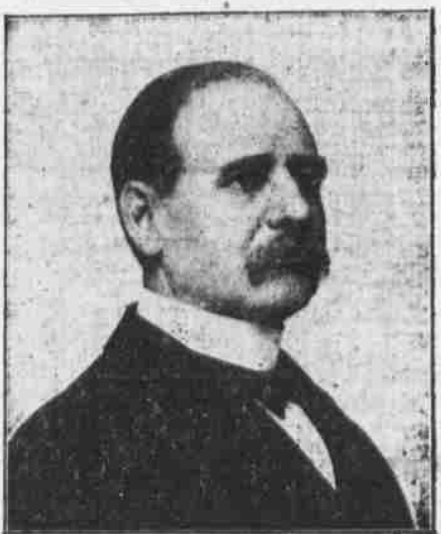
FRANK E. MARTIN.



JOHN G. LUND.



JAMES A. HOWARD.



MILTON J. KENNARD.



EDMUND K. LOWER.



JAMES H. SHERWOOD.



WILLIAM R. HOMAN.