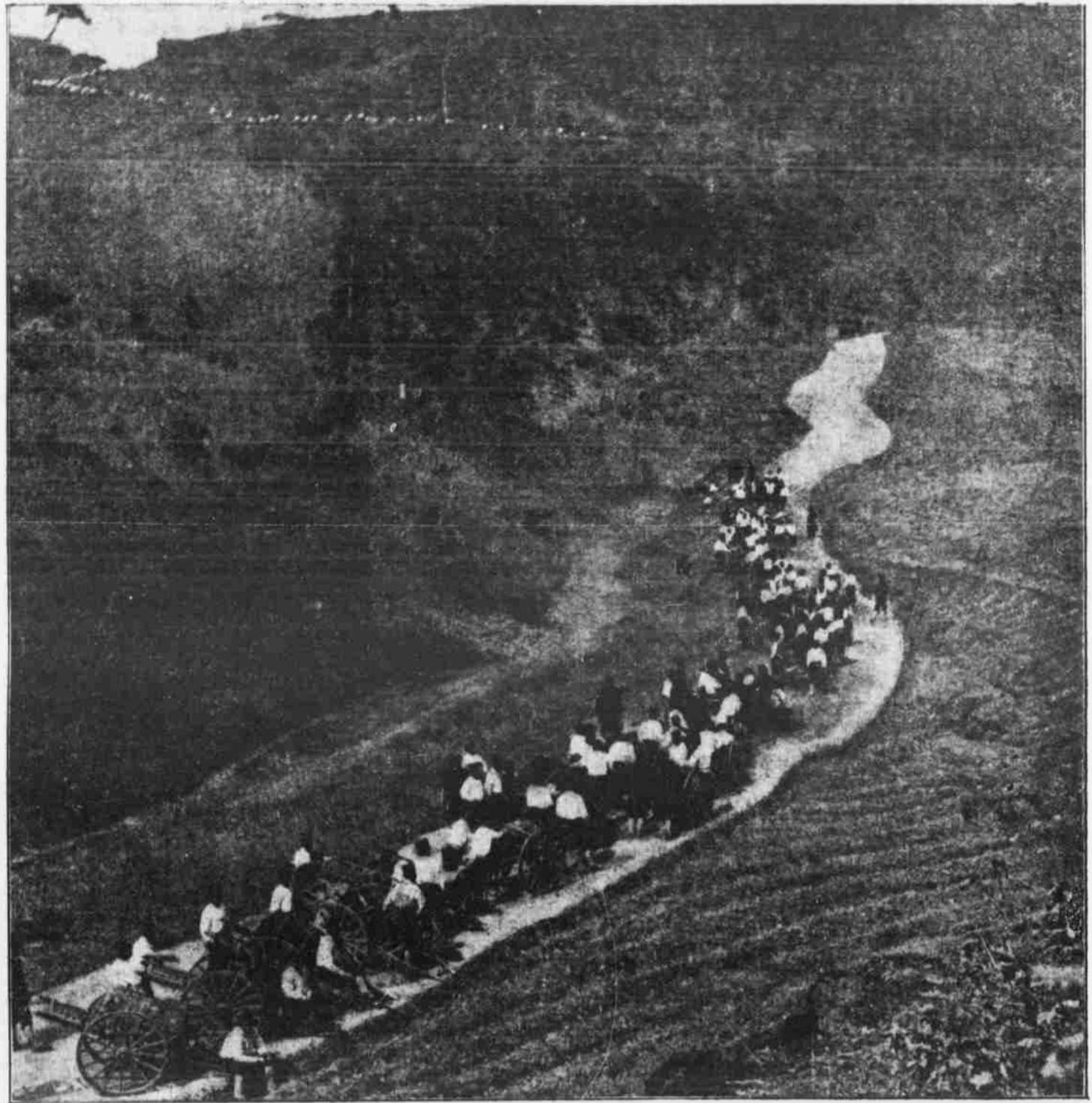


# Rushing Supplies for Japanese Army on the Yalu

**T**HIS photograph was taken in the middle of March, and shows a transport column resting in the defiles of the Tong Sari mountains. Winter breaks and spring comes with astonishing swiftness in this region, and these troops, a few days before toiling through snowdrifts and over frozen trails, have stripped off their coats, and appear to be in summer marching gear. In place of the wagon transport of other modern armies, the Japanese use small two-wheeled carts which can be drawn by ponies, or by man-power, as occasion favors. Food, clothing, ammunition, all the hundred and one items of supply for an army, from tent pegs to shoes, are packed in small matting covered packages of uniform size, ready to pack on cart. Instead of a vast litter of all sorts of material at a transport depot, or on steamer or wharf, the Japanese army supplies are carefully numbered and piled, each of the small packages having a handle. This is one of the reasons why the bold advance through Corea in midwinter was so successfully carried out. Under the same conditions of climate and terrain, the Russians in Manchuria have been hampered by the fact that the troops could move no faster than the wagon trains which were helpless in bad roads. The Japanese transport can move as fast as the fighting column at all times, and the increased mobility of action will be an important advantage in movements of grand strategy. The reports are that the Japanese infantry have been rushing to the front in marches of from fifteen to twenty-five miles a day.

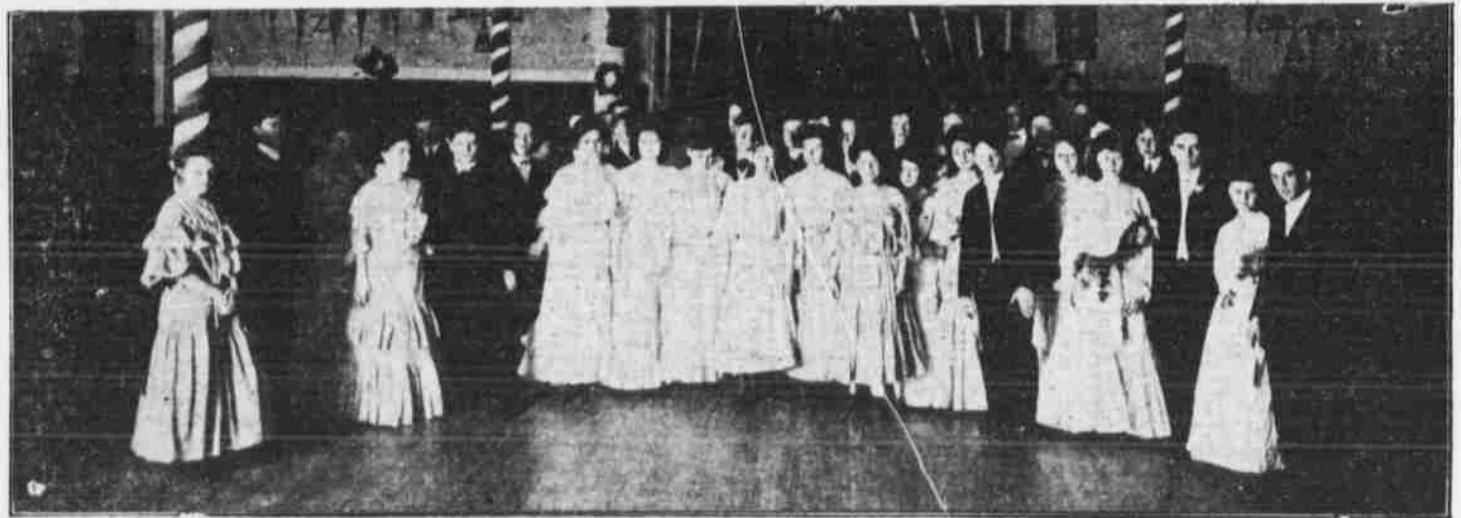
The Japanese have been successful in forcing a passage of the Yalu and have driven the Russians back from point after point that had been occupied by the czar's troops. No very accurate detailed information has been received from the theater of war since the fighting at Wiju, where the Japanese crossed the river. This was the scene of one of the great battles of the war with China, the Japanese army forcing a passage of the river then almost exactly as they did against the Russians. Since crossing the river the Japanese have effected a junction between the two columns of their army that had penetrated the Liao Tung peninsula, the one landing back of Port Arthur and the other crossing the Yalu at Wiju. This movement, with the successful investment of Port Arthur by sea, gives the Japanese absolute command of the peninsula and forces Russia to depend on the northern port of Vladivostok for its communication by sea. The abandonment of New Chwang and others of the advanced positions taken by the Russian army removes the probable scene of the next great land engagement farther north in Manchuria.



SCENE ON A COREAN MOUNTAIN ROAD DURING THE JAPANESE ADVANCE FROM SEOUL TO THE YALU.—Photograph by Robert L. Dunn, Collier's Special War Photographer with the Japanese Army in Corea; Copyright, 1904, by Collier's Weekly.

## Greek Letter Societies in Omaha

**G**REEKS are becoming numerous in Omaha. Not the kind that fell with Leonidas, nor the kind that followed Alexander, nor yet the sort that listened to Demosthenes; but the "Greeks" of modern college life, the young men who join the societies and take for their name and insignia one or more letters of the Greek alphabet. This feature of college life has far outgrown its originators, but still maintains the idea on which it was founded. Established to foster sociability and to be of assistance to the members, the first Greek letter society soon found that it was too small to accommodate all who wished to join, and another was started. As the colleges have multiplied, the societies have multiplied. Some of the original societies have spread with the spread of education and have founded at new schools new chapters, and some have remained exclusively at the schools of their origin, and membership in one of these is an honor as much to be desired as is the "sheepskin" from the school itself. But, so long as the "alpha, beta, gamma, delta," combination holds out, there will be enough Greek societies to go around, and anyone who goes to college and is a good fellow may get into one. Not a great while ago the college spirit was extended to the high schools and a Greek letter frat for the high school boys was instituted. Omaha has one of these chapters, in addition to the chapters that are connected with the higher institutions of learning of the city. And then there is an independent organization, the Omikron Alpha Pi, which is unique to Omaha so far as is known. This body is made up of young men who have been attendants at college and have joined themselves to some of the many fraternities there existing. Not finding here any central organization of their own societies, they have organized a new one, the object of which is companionship and sociability, the keeping up of college ties and the spirit of those days of school. This is one of the most exclusive clubs in the city. The pictures on this page are of dances given by the Omikron Alpha Pi and the Omaha High school chapter of Phi Lambda Epsilon. The photos were made by flashlight and are quite successful, when the conditions are considered.



PHI LAMBDA EPSILON DANCING PARTY.



OMIKRON ALPHA PI DANCING PARTY.