

# What the Visiting Delegation of Prominent Germans Saw in Iowa and Nebraska

Photographed Specially for This Number by Alfred Morris, Staff Photographer



ON THE WAY TO THE PACKING HOUSES AT SOUTH OMAHA.



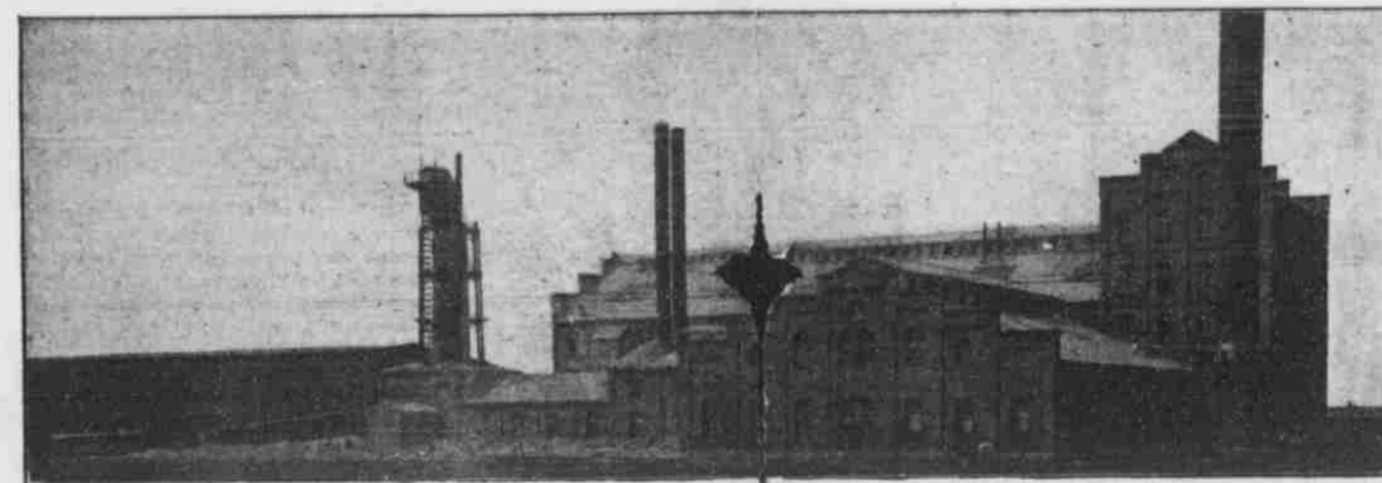
VISITORS IN THE ALFALFA AT WATSON'S RANCH NEAR KEARNEY, NEB.



PROF. CURTIS LEADS THE LINE AT AMES, IA.



POPPING CORN, A NOVEL EXPERIENCE AT THE BROOKMONT FARM.



BEET SUGAR MILL, AT AMES, NEB., WHICH WAS MINUTELY INSPECTED BY THE VISITORS.



TAKING NOTES ON THE FEEDING TEST—PROF. KENNEDY EXPLAINING—AT ODEBOLT, IA.



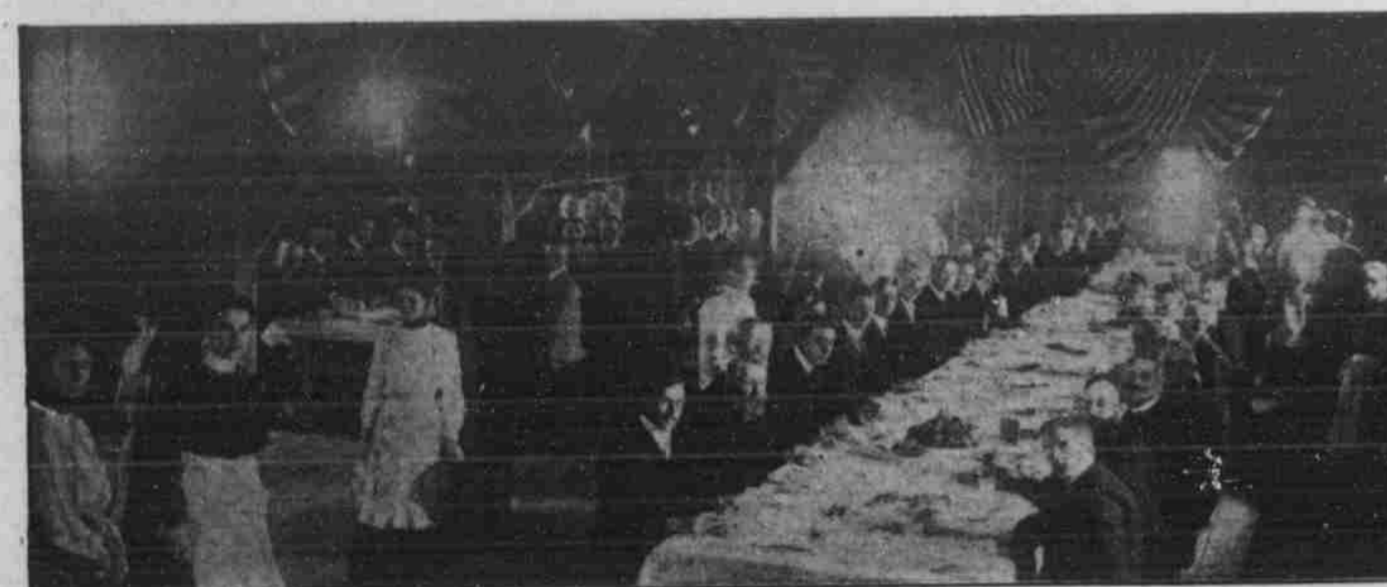
DISTINGUISHED VISITORS GROUPED IN FRONT OF MAIN BUILDING OF IOWA AGRICULTURAL COLLEGE.



IN THE BOILER ROOM AT THE BEET SUGAR FACTORY AT AMES, NEB.



VISITORS GROUPED AFTER LUNCHEON AT THE LIVE STOCK EXCHANGE, SOUTH OMAHA.



DINNER IN THE GRANARY OF A. E. COOK AT ODEBOLT, IA.



WATCHING A CORN PLANTER OPERATE AT ODEBOLT, IA.



INSPECTING THE SOURCE OF AMERICAN PORK AT THE IOWA AGRICULTURAL COLLEGE, AMES, IA.



SHEEP SHEARING EXHIBITION AT THE IOWA AGRICULTURAL COLLEGE.



INSPECTING THE HUGE GRANARY ON BROOKMONT FARM, ODEBOLT, IA.



INSPECTING AN IRRIGATING DITCH AT KEARNEY, NEB.