

# WOODMEN OF THE WORLD

(Incorporated January, 1891.)

TWELVE YEARS OLD. JURISDICTION, UNITED STATES AND CANADA.

## ...STATEMENT...

Benefits in Force, June 1, 1902, . . . . .	\$500,000,000	Net Increase in Membership, 1901, . . . . .	41,295
Total Death Claims Paid, . . . . .	13,000,000	Total Number of Camps, . . . . .	6,500
Total Paid for Monuments, . . . . .	700,000	Total Membership, June 1, 1902, . . . . .	350,000
Total Death Claims and Monuments, . . . . .	13,700,000	Reserve or Emergency Fund Invested, . . . . .	\$1,500,000

## CAPABLE DEPUTIES WANTED.

**O**UR Popular and Original Features commend the Order to favorable consideration.  
 Five Hundred to Three Thousand Dollars Benefits at Death. Graded Assessment Rates.  
 A Hundred Dollar Monument Placed at the Grave of Every Deceased Member.  
 Monuments Unveiled and Graves Decorated Annually by Beautiful Ceremonies.  
 Emergency Fund keeps Assessments at Minimum.  
 Total Disability Benefits at Seventy Years of Age. One-tenth Face of Certificate Paid to Member each Year thereafter.

Address—

J. C. ROOT, Sovereign Commander,

or J. T. YATES, Sovereign Clerk,

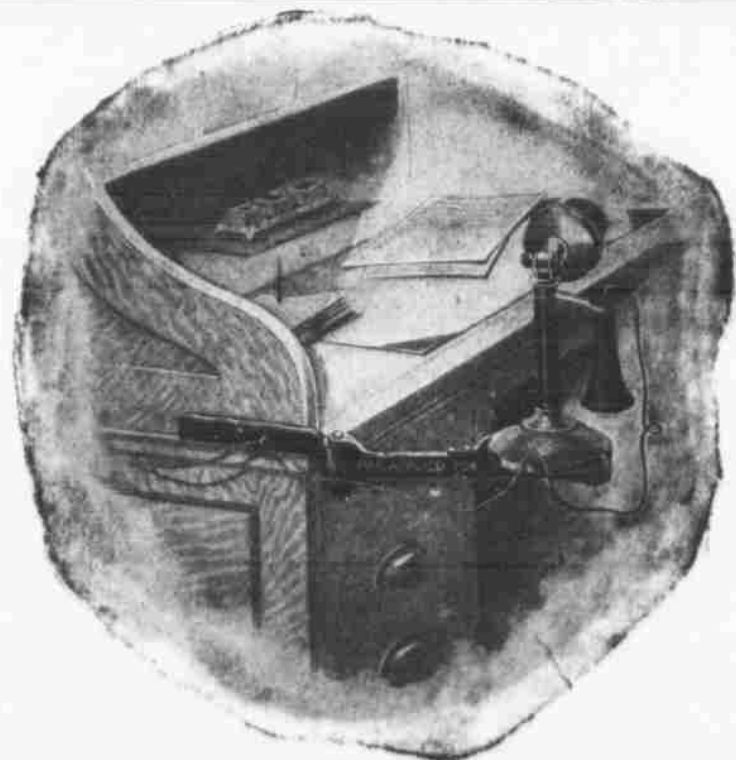
OMAHA, NEBRASKA.

**BAKER BROS. ENGRAVING CO.**

**DESIGNERS ENGRAVERS**      **HALF-TONE WOOD ZINC AND METAL**

**OMAHA NEB.**

ENGRAVINGS MADE FOR ALL PURPOSES AND BY ALL KNOWN PROCESSES



START THE YEAR RIGHT.

GET ON THE CIRCUIT

No Farm is Complete Without a Telephone

Every successful farmer must be in quick connection with the markets of the country. Get prices on our

Special Farmers' Phone

They are the BEST at lowest prices. Over 100,000 in use to-day.

WESTERN ELECTRICAL CO.

Long Distance Phone 456. OMAHA, NEB.

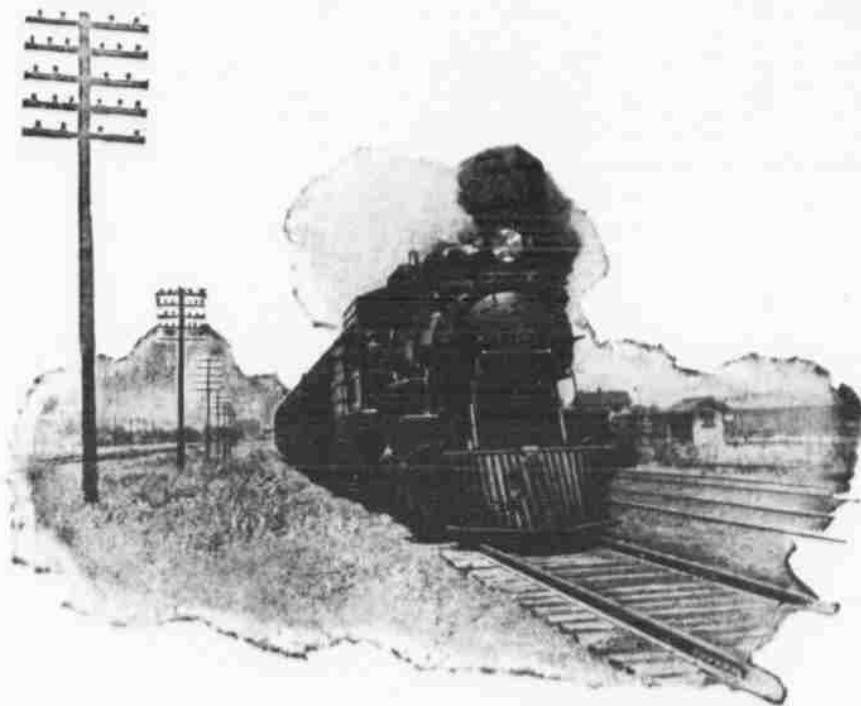


"FOLLOW THE FLAG."

## GOING SOUTH

Leaves OMAHA UNION STATION - 5:55 P. M.  
 Arrives ST. LOUIS " " - 7:00 A. M.

Shortest. Quickest. Best.



Excursions South Daily.

SOLID ROADBED, NEW STEEL RAILS, NEW VESTIBULE TRAINS.

For rates, descriptive matter, reservation of berths and all information call at



WABASH, (Corner) 1601 Far-nam Streets,

Or address HARRY E. MOORES, General Agent Passenger Department, OMAHA, NEBRASKA.....

