

MINING IN BLACK HILLS

Millions Invested in Mines and Improvements During the Last Year.

MANY CYANIDE PLANTS ARE ERECTED

Most Active District Has Been Around Bald Mountain, Where Large Shipments of Ore Have Been Daily.

DEADWOOD, S. D., Dec. 30.—(Special.)—It is estimated that \$7,000,000 has been invested in mines and mining in the Black Hills during the past year. The Homestake company laid everything with an investment of \$1,000,000 in a water supply, \$200,000 for a cyanide plant and about \$500,000 for other plant and buildings. A large per cent of the \$7,000,000 has been spent in building cyanide plants by the new companies. The Spearfish Mining company of Colorado Springs, Colo., has invested about \$700,000 in mining ground and a 250-ton cyanide plant. The Homestake company has invested in over \$100,000 in a 100-ton plant. The Detroit and Deadwood and Wasp No. 4 mining companies have each erected large plants, as well as have eight other companies.

The most active mining district during the past year has been around Bald Mountain, where most of the large companies have operated. The formation is flat. The Golden Reward, Horsehoe, Portland and the Dakota companies have erected an average of about 500 tons of ore per day. The Dakota and Portland companies have demonstrated the fact that a large per cent of the Bald mountain ore can be treated by the cyanide process. The Portland company has erected a fifty-ton cyanide plant at Central City and the Dakota company will commence soon the erection of a 100-ton plant in this city.

A great deal of work has been done in the Black Hill district. The Deadwood tailing has been operated by the Homestake, with a thirty-ton cyanide plant and the Boston-South Dakota company has gotten in shape to mill 100 tons of free-milling ore at the old Emerald mine. The old Emerald mine has been purchased by Boston people, the Shawmut Mining company having been sold to the Boston-South Dakota company. A fifty-ton cyanide plant has been built. Cook & Gibbs have kept their twenty-ton cyanide plant in constant operation at the Hildebrand stamp mill. At the head of the gulch the Golden Gate company has been operating. The Magpie and the Homestake. The Imperial company is one of the new organizations. A shaft has been commenced on the north end of the American Express ground and the company plans to erect a 100-ton cyanide plant in this city.

Ragged Top has been active all of the year. The Spearfish Mining company of Colorado Springs, Colo., has erected a 400-ton ground and a 250-ton cyanide plant has been erected. Allen, Small and associates have operated a twenty-ton cyanide plant successfully. The Ulster mine has been worked, a very rich strike of gold ore having been made. The lower portion of the Ragged Top mine. The Ulster Mining company has a very large Americanizing well under way. The whole Ragged Top Mining camp is being tunneled on the quartzite level. The Gold Hill company at Omaha has sunk a shaft to quartzite. At Omaha has sunk a shaft to quartzite. At Omaha has sunk a shaft to quartzite.

The front elevation, while not yet completed, shows a very tasty building and the south elevation, discloses a very substantial brick structure. The plan is to contain amount of ornamentation there is no gingerbread work. The floor plans are arranged for the best accommodations for the pupils as well as for the convenience of the teachers.

Architect Davis has secured some ideas of modern school buildings by visiting some of the schools recently constructed in St. Louis. Those who have seen the plans assert that if a building of the kind being designed is erected it will be a credit to South Omaha.

Calendar Year Closes. Today will close the calendar year at the iron stock yards. Up to Saturday night there has been received at the stock yards a total of 1,900,872 head of cattle. Since January 1, 1900, 827,092 head of cattle, 2,196,503 hogs and 1,274,602 head of sheep. These figures show an increase of 188,890 sheep as compared with the year 1899, but a decrease of 5,990 hogs and 14,000 head of cattle. With standing this decrease business has been good at the yards throughout the year. Those who are in a position to know assert that the shortage of cattle on the western ranges coupled with the unusual demand for the cattle of the year, has again the opening of the new Cudahy house in Kansas City put a stop to the shipment of canners to the Cudahy plant here. Cudahy formerly bought cattle for the canning trade and light hogs at Kansas City and shipped them here for slaughter.

Mr. John H. Harrison, of the Homestake mine, who has been notified of the opening of the Cudahy house in Kansas City and accounts to a great extent for the falling off in receipts of hogs and cattle at the yards.

Pleasant Surprise Party. Saturday night Mr. and Mrs. C. M. Rich were surprised at their home by a number of friends, the occasion being the twentieth anniversary of their marriage. Members of the First Presbyterian church presented Mr. and Mrs. Rich with an elegant dining-room table. Rev. Dr. Wheeler delivered the presentation speech. During the evening Messrs. Carley, Smith and Broadhurst rendered a number of musical selections.

Magie City Joins. Mr. and Mrs. George Jones will return from their trip to the West. Remember the pond social at the hospital Tuesday afternoon. Rev. Dr. Johnson, pastor of the Methodist church of the Red Men will give a musical ball.

The regular meeting of the Ladies' Circle of the Methodist church will be held on January 3. Members will be served at the meeting of the Knights and Ladies of Security to be held tonight.

Surprise is expressed at the stock yards at the action of George Hobbick in shooting and killing a cow. The University thought here that Hobbick was temporarily deranged.

OMAHA LIVE STOCK MARKET

Cattle Receipts for the Week Were Lightest of the Year.

TENDENCY OF PRICES WAS UPWARD

Hog Market Opened Active, with Good Grades Selling Higher—Sheep Receipts Are Light.

SOUTH OMAHA, Dec. 30.—(Special.)—Cattle Receipts for the week were lightest of the year. The market opened active, with good grades selling higher. Sheep receipts were light. The market for hogs was active, with good grades selling higher. Prices were generally upward.

CHICAGO GRAIN AND PROVISIONS. Features of the Trading and Closing Quotations for Saturday. CHICAGO, Dec. 29.—Wheat was a buoyant market today, under the stimulus of a heavy export demand. The market opened active, with good grades selling higher. Prices were generally upward.

ST. LOUIS GRAIN AND PROVISIONS. ST. LOUIS, Dec. 30.—(Special.)—Wheat was a buoyant market today, under the stimulus of a heavy export demand. The market opened active, with good grades selling higher. Prices were generally upward.

LONDON STANDS SHOCK WELL. LONDON, Dec. 30.—The Stock exchange last week seemed to have every prospect of a recovery. The market opened active, with good grades selling higher. Prices were generally upward.

OMAHA WHOLESALE MARKETS. Conditions of Trade and Quotations on Staple and Fancy Produce. EGGS—Receipts, light; good stock, 182c; medium, 175c; small, 165c. POULTRY—Hens, 6c; spring chickens, 7c; turkeys, 12c; ducks, 8c; geese, 7c.

CHICAGO LIVE STOCK MARKET. Cattle Nominally Steady—Hogs Shad Higher—Sheep Steady. CHICAGO, Dec. 29.—(CATTLE)—Receipts, 200 head; nominal; steady; market, 18c; prime steers, \$10.00; medium, \$9.50; mixed, \$9.00; fat hogs, \$10.00; mixed, \$9.50; sheep, \$10.00; mixed, \$9.50.

OMAHA WHOLESALE MARKETS. Conditions of Trade and Quotations on Staple and Fancy Produce. EGGS—Receipts, light; good stock, 182c; medium, 175c; small, 165c. POULTRY—Hens, 6c; spring chickens, 7c; turkeys, 12c; ducks, 8c; geese, 7c.

CHICAGO LIVE STOCK MARKET. Cattle Nominally Steady—Hogs Shad Higher—Sheep Steady. CHICAGO, Dec. 29.—(CATTLE)—Receipts, 200 head; nominal; steady; market, 18c; prime steers, \$10.00; medium, \$9.50; mixed, \$9.00; fat hogs, \$10.00; mixed, \$9.50; sheep, \$10.00; mixed, \$9.50.

OMAHA WHOLESALE MARKETS. Conditions of Trade and Quotations on Staple and Fancy Produce. EGGS—Receipts, light; good stock, 182c; medium, 175c; small, 165c. POULTRY—Hens, 6c; spring chickens, 7c; turkeys, 12c; ducks, 8c; geese, 7c.

CHICAGO LIVE STOCK MARKET. Cattle Nominally Steady—Hogs Shad Higher—Sheep Steady. CHICAGO, Dec. 29.—(CATTLE)—Receipts, 200 head; nominal; steady; market, 18c; prime steers, \$10.00; medium, \$9.50; mixed, \$9.00; fat hogs, \$10.00; mixed, \$9.50; sheep, \$10.00; mixed, \$9.50.

OMAHA WHOLESALE MARKETS. Conditions of Trade and Quotations on Staple and Fancy Produce. EGGS—Receipts, light; good stock, 182c; medium, 175c; small, 165c. POULTRY—Hens, 6c; spring chickens, 7c; turkeys, 12c; ducks, 8c; geese, 7c.

CHICAGO LIVE STOCK MARKET. Cattle Nominally Steady—Hogs Shad Higher—Sheep Steady. CHICAGO, Dec. 29.—(CATTLE)—Receipts, 200 head; nominal; steady; market, 18c; prime steers, \$10.00; medium, \$9.50; mixed, \$9.00; fat hogs, \$10.00; mixed, \$9.50; sheep, \$10.00; mixed, \$9.50.

OMAHA LIVE STOCK MARKET

Cattle Receipts for the Week Were Lightest of the Year.

TENDENCY OF PRICES WAS UPWARD

Hog Market Opened Active, with Good Grades Selling Higher—Sheep Receipts Are Light.

SOUTH OMAHA, Dec. 30.—(Special.)—Cattle Receipts for the week were lightest of the year. The market opened active, with good grades selling higher. Sheep receipts were light. The market for hogs was active, with good grades selling higher. Prices were generally upward.

CHICAGO GRAIN AND PROVISIONS. Features of the Trading and Closing Quotations for Saturday. CHICAGO, Dec. 29.—Wheat was a buoyant market today, under the stimulus of a heavy export demand. The market opened active, with good grades selling higher. Prices were generally upward.

ST. LOUIS GRAIN AND PROVISIONS. ST. LOUIS, Dec. 30.—(Special.)—Wheat was a buoyant market today, under the stimulus of a heavy export demand. The market opened active, with good grades selling higher. Prices were generally upward.

LONDON STANDS SHOCK WELL. LONDON, Dec. 30.—The Stock exchange last week seemed to have every prospect of a recovery. The market opened active, with good grades selling higher. Prices were generally upward.

OMAHA WHOLESALE MARKETS. Conditions of Trade and Quotations on Staple and Fancy Produce. EGGS—Receipts, light; good stock, 182c; medium, 175c; small, 165c. POULTRY—Hens, 6c; spring chickens, 7c; turkeys, 12c; ducks, 8c; geese, 7c.

CHICAGO LIVE STOCK MARKET. Cattle Nominally Steady—Hogs Shad Higher—Sheep Steady. CHICAGO, Dec. 29.—(CATTLE)—Receipts, 200 head; nominal; steady; market, 18c; prime steers, \$10.00; medium, \$9.50; mixed, \$9.00; fat hogs, \$10.00; mixed, \$9.50; sheep, \$10.00; mixed, \$9.50.

OMAHA WHOLESALE MARKETS. Conditions of Trade and Quotations on Staple and Fancy Produce. EGGS—Receipts, light; good stock, 182c; medium, 175c; small, 165c. POULTRY—Hens, 6c; spring chickens, 7c; turkeys, 12c; ducks, 8c; geese, 7c.

CHICAGO LIVE STOCK MARKET. Cattle Nominally Steady—Hogs Shad Higher—Sheep Steady. CHICAGO, Dec. 29.—(CATTLE)—Receipts, 200 head; nominal; steady; market, 18c; prime steers, \$10.00; medium, \$9.50; mixed, \$9.00; fat hogs, \$10.00; mixed, \$9.50; sheep, \$10.00; mixed, \$9.50.

OMAHA WHOLESALE MARKETS. Conditions of Trade and Quotations on Staple and Fancy Produce. EGGS—Receipts, light; good stock, 182c; medium, 175c; small, 165c. POULTRY—Hens, 6c; spring chickens, 7c; turkeys, 12c; ducks, 8c; geese, 7c.

CHICAGO LIVE STOCK MARKET. Cattle Nominally Steady—Hogs Shad Higher—Sheep Steady. CHICAGO, Dec. 29.—(CATTLE)—Receipts, 200 head; nominal; steady; market, 18c; prime steers, \$10.00; medium, \$9.50; mixed, \$9.00; fat hogs, \$10.00; mixed, \$9.50; sheep, \$10.00; mixed, \$9.50.

OMAHA WHOLESALE MARKETS. Conditions of Trade and Quotations on Staple and Fancy Produce. EGGS—Receipts, light; good stock, 182c; medium, 175c; small, 165c. POULTRY—Hens, 6c; spring chickens, 7c; turkeys, 12c; ducks, 8c; geese, 7c.

CHICAGO LIVE STOCK MARKET. Cattle Nominally Steady—Hogs Shad Higher—Sheep Steady. CHICAGO, Dec. 29.—(CATTLE)—Receipts, 200 head; nominal; steady; market, 18c; prime steers, \$10.00; medium, \$9.50; mixed, \$9.00; fat hogs, \$10.00; mixed, \$9.50; sheep, \$10.00; mixed, \$9.50.

OMAHA LIVE STOCK MARKET

Cattle Receipts for the Week Were Lightest of the Year.

TENDENCY OF PRICES WAS UPWARD

Hog Market Opened Active, with Good Grades Selling Higher—Sheep Receipts Are Light.

SOUTH OMAHA, Dec. 30.—(Special.)—Cattle Receipts for the week were lightest of the year. The market opened active, with good grades selling higher. Sheep receipts were light. The market for hogs was active, with good grades selling higher. Prices were generally upward.

CHICAGO GRAIN AND PROVISIONS. Features of the Trading and Closing Quotations for Saturday. CHICAGO, Dec. 29.—Wheat was a buoyant market today, under the stimulus of a heavy export demand. The market opened active, with good grades selling higher. Prices were generally upward.

ST. LOUIS GRAIN AND PROVISIONS. ST. LOUIS, Dec. 30.—(Special.)—Wheat was a buoyant market today, under the stimulus of a heavy export demand. The market opened active, with good grades selling higher. Prices were generally upward.

LONDON STANDS SHOCK WELL. LONDON, Dec. 30.—The Stock exchange last week seemed to have every prospect of a recovery. The market opened active, with good grades selling higher. Prices were generally upward.

OMAHA WHOLESALE MARKETS. Conditions of Trade and Quotations on Staple and Fancy Produce. EGGS—Receipts, light; good stock, 182c; medium, 175c; small, 165c. POULTRY—Hens, 6c; spring chickens, 7c; turkeys, 12c; ducks, 8c; geese, 7c.

CHICAGO LIVE STOCK MARKET. Cattle Nominally Steady—Hogs Shad Higher—Sheep Steady. CHICAGO, Dec. 29.—(CATTLE)—Receipts, 200 head; nominal; steady; market, 18c; prime steers, \$10.00; medium, \$9.50; mixed, \$9.00; fat hogs, \$10.00; mixed, \$9.50; sheep, \$10.00; mixed, \$9.50.

OMAHA WHOLESALE MARKETS. Conditions of Trade and Quotations on Staple and Fancy Produce. EGGS—Receipts, light; good stock, 182c; medium, 175c; small, 165c. POULTRY—Hens, 6c; spring chickens, 7c; turkeys, 12c; ducks, 8c; geese, 7c.

CHICAGO LIVE STOCK MARKET. Cattle Nominally Steady—Hogs Shad Higher—Sheep Steady. CHICAGO, Dec. 29.—(CATTLE)—Receipts, 200 head; nominal; steady; market, 18c; prime steers, \$10.00; medium, \$9.50; mixed, \$9.00; fat hogs, \$10.00; mixed, \$9.50; sheep, \$10.00; mixed, \$9.50.

OMAHA WHOLESALE MARKETS. Conditions of Trade and Quotations on Staple and Fancy Produce. EGGS—Receipts, light; good stock, 182c; medium, 175c; small, 165c. POULTRY—Hens, 6c; spring chickens, 7c; turkeys, 12c; ducks, 8c; geese, 7c.

CHICAGO LIVE STOCK MARKET. Cattle Nominally Steady—Hogs Shad Higher—Sheep Steady. CHICAGO, Dec. 29.—(CATTLE)—Receipts, 200 head; nominal; steady; market, 18c; prime steers, \$10.00; medium, \$9.50; mixed, \$9.00; fat hogs, \$10.00; mixed, \$9.50; sheep, \$10.00; mixed, \$9.50.

OMAHA WHOLESALE MARKETS. Conditions of Trade and Quotations on Staple and Fancy Produce. EGGS—Receipts, light; good stock, 182c; medium, 175c; small, 165c. POULTRY—Hens, 6c; spring chickens, 7c; turkeys, 12c; ducks, 8c; geese, 7c.

CHICAGO LIVE STOCK MARKET. Cattle Nominally Steady—Hogs Shad Higher—Sheep Steady. CHICAGO, Dec. 29.—(CATTLE)—Receipts, 200 head; nominal; steady; market, 18c; prime steers, \$10.00; medium, \$9.50; mixed, \$9.00; fat hogs, \$10.00; mixed, \$9.50; sheep, \$10.00; mixed, \$9.50.

OMAHA LIVE STOCK MARKET

Cattle Receipts for the Week Were Lightest of the Year.

TENDENCY OF PRICES WAS UPWARD

Hog Market Opened Active, with Good Grades Selling Higher—Sheep Receipts Are Light.

SOUTH OMAHA, Dec. 30.—(Special.)—Cattle Receipts for the week were lightest of the year. The market opened active, with good grades selling higher. Sheep receipts were light. The market for hogs was active, with good grades selling higher. Prices were generally upward.

CHICAGO GRAIN AND PROVISIONS. Features of the Trading and Closing Quotations for Saturday. CHICAGO, Dec. 29.—Wheat was a buoyant market today, under the stimulus of a heavy export demand. The market opened active, with good grades selling higher. Prices were generally upward.

ST. LOUIS GRAIN AND PROVISIONS. ST. LOUIS, Dec. 30.—(Special.)—Wheat was a buoyant market today, under the stimulus of a heavy export demand. The market opened active, with good grades selling higher. Prices were generally upward.

LONDON STANDS SHOCK WELL. LONDON, Dec. 30.—The Stock exchange last week seemed to have every prospect of a recovery. The market opened active, with good grades selling higher. Prices were generally upward.

OMAHA WHOLESALE MARKETS. Conditions of Trade and Quotations on Staple and Fancy Produce. EGGS—Receipts, light; good stock, 182c; medium, 175c; small, 165c. POULTRY—Hens, 6c; spring chickens, 7c; turkeys, 12c; ducks, 8c; geese, 7c.

CHICAGO LIVE STOCK MARKET. Cattle Nominally Steady—Hogs Shad Higher—Sheep Steady. CHICAGO, Dec. 29.—(CATTLE)—Receipts, 200 head; nominal; steady; market, 18c; prime steers, \$10.00; medium, \$9.50; mixed, \$9.00; fat hogs, \$10.00; mixed, \$9.50; sheep, \$10.00; mixed, \$9.50.

OMAHA WHOLESALE MARKETS. Conditions of Trade and Quotations on Staple and Fancy Produce. EGGS—Receipts, light; good stock, 182c; medium, 175c; small, 165c. POULTRY—Hens, 6c; spring chickens, 7c; turkeys, 12c; ducks, 8c; geese, 7c.

CHICAGO LIVE STOCK MARKET. Cattle Nominally Steady—Hogs Shad Higher—Sheep Steady. CHICAGO, Dec. 29.—(CATTLE)—Receipts, 200 head; nominal; steady; market, 18c; prime steers, \$10.00; medium, \$9.50; mixed, \$9.00; fat hogs, \$10.00; mixed, \$9.50; sheep, \$10.00; mixed, \$9.50.

OMAHA WHOLESALE MARKETS. Conditions of Trade and Quotations on Staple and Fancy Produce. EGGS—Receipts, light; good stock, 182c; medium, 175c; small, 165c. POULTRY—Hens, 6c; spring chickens, 7c; turkeys, 12c; ducks, 8c; geese, 7c.

CHICAGO LIVE STOCK MARKET. Cattle Nominally Steady—Hogs Shad Higher—Sheep Steady. CHICAGO, Dec. 29.—(CATTLE)—Receipts, 200 head; nominal; steady; market, 18c; prime steers, \$10.00; medium, \$9.50; mixed, \$9.00; fat hogs, \$10.00; mixed, \$9.50; sheep, \$10.00; mixed, \$9.50.

OMAHA WHOLESALE MARKETS. Conditions of Trade and Quotations on Staple and Fancy Produce. EGGS—Receipts, light; good stock, 182c; medium, 175c; small, 165c. POULTRY—Hens, 6c; spring chickens, 7c; turkeys, 12c; ducks, 8c; geese, 7c.

CHICAGO LIVE STOCK MARKET. Cattle Nominally Steady—Hogs Shad Higher—Sheep Steady. CHICAGO, Dec. 29.—(CATTLE)—Receipts, 200 head; nominal; steady; market, 18c; prime steers, \$10.00; medium, \$9.50; mixed, \$9.00; fat hogs, \$10.00; mixed, \$9.50; sheep, \$10.00; mixed, \$9.50.

OMAHA LIVE STOCK MARKET

Cattle Receipts for the Week Were Lightest of the Year.

TENDENCY OF PRICES WAS UPWARD

Hog Market Opened Active, with Good Grades Selling Higher—Sheep Receipts Are Light.

SOUTH OMAHA, Dec. 30.—(Special.)—Cattle Receipts for the week were lightest of the year. The market opened active, with good grades selling higher. Sheep receipts were light. The market for hogs was active, with good grades selling higher. Prices were generally upward.

CHICAGO GRAIN AND PROVISIONS. Features of the Trading and Closing Quotations for Saturday. CHICAGO, Dec. 29.—Wheat was a buoyant market today, under the stimulus of a heavy export demand. The market opened active, with good grades selling higher. Prices were generally upward.

ST. LOUIS GRAIN AND PROVISIONS. ST. LOUIS, Dec. 30.—(Special.)—Wheat was a buoyant market today, under the stimulus of a heavy export demand. The market opened active, with good grades selling higher. Prices were generally upward.

LONDON STANDS SHOCK WELL. LONDON, Dec. 30.—The Stock exchange last week seemed to have every prospect of a recovery. The market opened active, with good grades selling higher. Prices were generally upward.

OMAHA WHOLESALE MARKETS. Conditions of Trade and Quotations on Staple and Fancy Produce. EGGS—Receipts, light; good stock, 182c; medium, 175c; small, 165c. POULTRY—Hens, 6c; spring chickens, 7c; turkeys, 12c; ducks, 8c; geese, 7c.

CHICAGO LIVE STOCK MARKET. Cattle Nominally Steady—Hogs Shad Higher—Sheep Steady. CHICAGO, Dec. 29.—(CATTLE)—Receipts, 200 head; nominal; steady; market, 18c; prime steers, \$10.00; medium, \$9.50; mixed, \$9.00; fat hogs, \$10.00; mixed, \$9.50; sheep, \$10.00; mixed, \$9.50.

OMAHA WHOLESALE MARKETS. Conditions of Trade and Quotations on Staple and Fancy Produce. EGGS—Receipts, light; good stock, 182c; medium, 175c; small, 165c. POULTRY—Hens, 6c; spring chickens, 7c; turkeys, 12c; ducks, 8c; geese, 7c.

CHICAGO LIVE STOCK MARKET. Cattle Nominally Steady—Hogs Shad Higher—Sheep Steady. CHICAGO, Dec. 29.—(CATTLE)—Receipts, 200 head; nominal; steady; market, 18c; prime steers, \$10.00; medium, \$9.50; mixed, \$9.00; fat hogs, \$10.00; mixed, \$9.50; sheep, \$10.00; mixed, \$9.50.

OMAHA WHOLESALE MARKETS. Conditions of Trade and Quotations on Staple and Fancy Produce. EGGS—Receipts, light; good stock, 182c; medium, 175c; small, 165c. POULTRY—Hens, 6c; spring chickens, 7c; turkeys, 12c; ducks, 8c; geese, 7c.

CHICAGO LIVE STOCK MARKET. Cattle Nominally Steady—Hogs Shad Higher—Sheep Steady. CHICAGO, Dec. 29.—(CATTLE)—Receipts, 200 head; nominal; steady; market, 18c; prime steers, \$10.00; medium, \$9.50; mixed, \$9.00; fat hogs, \$10.00; mixed, \$9.50; sheep, \$10.00; mixed, \$9.50.

OMAHA WHOLESALE MARKETS. Conditions of Trade and Quotations on Staple and Fancy Produce. EGGS—Receipts, light; good stock, 182c; medium, 175c; small, 165c. POULTRY—Hens, 6c; spring chickens, 7c; turkeys, 12c; ducks, 8c; geese, 7c.

CHICAGO LIVE STOCK MARKET. Cattle Nominally Steady—Hogs Shad Higher—Sheep Steady. CHICAGO, Dec. 29.—(CATTLE)—Receipts, 200 head; nominal; steady; market, 18c; prime steers, \$10.00; medium, \$9.50; mixed, \$9.00; fat hogs, \$10.00; mixed, \$9.50; sheep, \$10.00; mixed, \$9.50.

OMAHA LIVE STOCK MARKET

Cattle Receipts for the Week Were Lightest of the Year.

TENDENCY OF PRICES WAS UPWARD

Hog Market Opened Active, with Good Grades Selling Higher—Sheep Receipts Are Light.

SOUTH OMAHA, Dec. 30.—(Special.)—Cattle Receipts for the week were lightest of the year. The market opened active, with good grades selling higher. Sheep receipts were light. The market for hogs was active, with good grades selling higher. Prices were generally upward.

CHICAGO GRAIN AND PROVISIONS. Features of the Trading and Closing Quotations for Saturday. CHICAGO, Dec. 29.—Wheat was a buoyant market today, under the stimulus of a heavy export demand. The market opened active, with good grades selling higher. Prices were generally upward.

ST. LOUIS GRAIN AND PROVISIONS. ST. LOUIS, Dec. 30.—(Special.)—Wheat was a buoyant market today, under the stimulus of a heavy export demand. The market opened active, with good grades selling higher. Prices were generally upward.

LONDON STANDS SHOCK WELL. LONDON, Dec. 30.—The Stock exchange last week seemed to have every prospect of a recovery. The market opened active, with good grades selling higher. Prices were generally upward.

OMAHA WHOLESALE MARKETS. Conditions of Trade and Quotations on Staple and Fancy Produce. EGGS—Receipts, light; good stock, 182c; medium, 175c; small, 165c. POULTRY—Hens, 6c; spring chickens, 7c; turkeys, 12c; ducks, 8c; geese, 7c.

CHICAGO LIVE STOCK MARKET. Cattle Nominally Steady—Hogs Shad Higher—Sheep Steady. CHICAGO, Dec. 29.—(CATTLE)—Receipts, 200 head; nominal; steady; market, 18c; prime steers, \$10.00; medium, \$9.50; mixed, \$9.00; fat hogs, \$10.00; mixed, \$9.50; sheep, \$10.00; mixed, \$9.50.

OMAHA WHOLESALE MARKETS. Conditions of Trade and Quotations on Staple and Fancy Produce. EGGS—Receipts, light; good stock, 182c; medium, 175c; small, 165c. POULTRY—Hens, 6c; spring chickens, 7c; turkeys, 12c; ducks, 8c; geese, 7c.

CHICAGO LIVE STOCK MARKET. Cattle Nominally Steady—Hogs Shad Higher—Sheep Steady. CHICAGO, Dec. 29.—(CATTLE)—Receipts, 200 head; nominal; steady; market, 18c; prime steers, \$10.00; medium, \$9.50; mixed, \$9.00; fat hogs, \$10.00; mixed, \$9.50; sheep, \$10.00; mixed, \$9.50.

OMAHA WHOLESALE MARKETS. Conditions of Trade and Quotations on Staple and Fancy Produce. EGGS—Receipts, light; good stock, 182c; medium, 175c; small, 165c. POULTRY—Hens, 6c; spring chickens, 7c; turkeys, 12c; ducks, 8c; geese, 7c.

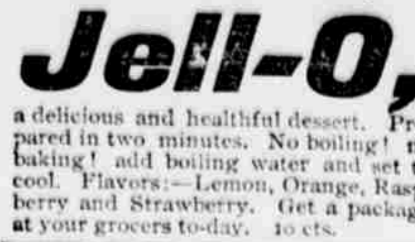
CHICAGO LIVE STOCK MARKET. Cattle Nominally Steady—Hogs Shad Higher—Sheep Steady. CHICAGO, Dec. 29.—(CATTLE)—Receipts, 200 head; nominal; steady; market, 18c; prime steers, \$10.00; medium, \$9.50; mixed, \$9.00; fat hogs, \$10.00; mixed, \$9.50; sheep, \$10.00; mixed, \$9.50.

OMAHA WHOLESALE MARKETS. Conditions of Trade and Quotations on Staple and Fancy Produce. EGGS—Receipts, light; good stock, 182c; medium, 175c; small, 165c. POULTRY—Hens, 6c; spring chickens, 7c; turkeys, 12c; ducks, 8c; geese, 7c.

CHICAGO LIVE STOCK MARKET. Cattle Nominally Steady—Hogs Shad Higher—Sheep Steady. CHICAGO, Dec. 29.—(CATTLE)—Receipts, 200 head; nominal; steady; market, 18c; prime steers, \$10.00; medium, \$9.50; mixed, \$9.00; fat hogs, \$10.00; mixed, \$9.50; sheep, \$10.00; mixed, \$9.50.

What Shall We Have for Dessert?

This question arises in the family every day. Let us answer it to-day. Try Jell-O.



A delicious and healthful dessert. Prepared in two minutes. No boiling! No baking! Add boiling water and set to cool. Flavors—Lemon, Orange, Raspberry and Strawberry. Get a package at your grocer today.

\$5.00 A MONTH. SPECIALIST

All Private Diseases and Disorders of Men

12 Years in Omaha