

10 SPECIAL NOTICES

Advertisements for these columns will be taken until 12 p. m. for the evening and until 8 p. m. for the morning and Sunday editions.

WANTED-SITUATIONS. YOUNG LADY FIVE YEARS' EXPERIENCE. Position as cashier or office work. Best city references. Address F 15, Box 1.

WANTED-MALE HELP. CANVASSERS TO TAKE ORDERS. NEW LINE of work; no heavy goods to carry; salary of commission. C. F. Adams Co., 124 So. 10th St.

WANTED-TO RENT. TEN OR TWELVE ROOM HOUSE FOR MAY 1st. Must be in the highest part of the city. Good repair. Address F 43, Box 1.

WANTED-TO BUY. I WISH TO PURCHASE THE LETTERS 'K' of O. from Soda Mint state your price. Write to me for address. N-44.

WANTED-TO RENT. ROOM MODERN CONVENIENT. FULL LOT EAST front, close location. 322 N. 48th St. Has been occupied for three years by Geo. Entrikin.

WANTED-TO RENT. CHURCH HOUSE NEAR Greenwood. 14. Address F 46, Box 1.

WANTED-TO RENT. FINE WHITE SAWMILL FOR FLOORS. ETC. for sale. Call at 1215 1/2 St. Tel. 458.

WANTED-TO RENT. A-SALESMAN TO SELL COATS TO DEALERS. We pay from \$60 to \$200 per month salary and expenses. Experience unnecessary. Permanent position. The De Mora Co., 201 Broadway.

WANTED-TO RENT. MADAME SMITH, 118 N. 12TH ST. Steam and alcohol bath. Tel. 594 1/2.

WANTED-TO RENT. PRIVATE HOME FOR LADIES BEFORE AND during confinement. Babies adopted and cared for. 118 N. 12th St.

WANTED-TO RENT. MONEY TO LOAN AT LOW RATES. O. F. Davis Co., 126 Farnam St. W-46.

WANTED-TO RENT. MONEY TO LOAN ON IMPROVED OMAHA real estate. Brennan-Love Co., 219 S. 16th St. W-49.

WANTED-TO RENT. MONEY TO LOAN ON IMPROVED REAL ESTATE in Omaha. Conner Bluffs & South Omaha. Pusey & Thomas, 508 First Nat'l Bank. W-42.

WANTED-TO RENT. MONEY TO LOAN ON IMPROVED OMAHA real estate. Brennan-Love Co., 219 S. 16th St. W-49.

WANTED-TO RENT. MONEY TO LOAN ON IMPROVED REAL ESTATE in Omaha. Conner Bluffs & South Omaha. Pusey & Thomas, 508 First Nat'l Bank. W-42.

WANTED-TO RENT. MONEY TO LOAN ON IMPROVED OMAHA real estate. Brennan-Love Co., 219 S. 16th St. W-49.

WANTED-TO RENT. MONEY TO LOAN ON IMPROVED REAL ESTATE in Omaha. Conner Bluffs & South Omaha. Pusey & Thomas, 508 First Nat'l Bank. W-42.

WANTED-TO RENT. MONEY TO LOAN ON IMPROVED OMAHA real estate. Brennan-Love Co., 219 S. 16th St. W-49.

WANTED-TO RENT. MONEY TO LOAN ON IMPROVED REAL ESTATE in Omaha. Conner Bluffs & South Omaha. Pusey & Thomas, 508 First Nat'l Bank. W-42.

WANTED-TO RENT. MONEY TO LOAN ON IMPROVED OMAHA real estate. Brennan-Love Co., 219 S. 16th St. W-49.

WANTED-TO RENT. MONEY TO LOAN ON IMPROVED REAL ESTATE in Omaha. Conner Bluffs & South Omaha. Pusey & Thomas, 508 First Nat'l Bank. W-42.

FOR RENT-STORIES AND OFFICES.

FOR RENT IN THE NEW BUILDING. One large corner room, 24 floor, with vault and private office. Rent, \$75.00.

FOR RENT, DESK ROOM IN GROUND FLOOR. Office building, water, steam heat, electric light and janitor service. Apply to Superior Building, 14-17.

AGENTS WANTED. RELIABLE MAN TO HANDLE AGENTS FOR Telephone Tables and specialties. \$5000 a year. Write to Victor M. G. Cleveland, Ohio. J-3700 3/4.

WANTED-TO RENT. TEN OR TWELVE ROOM HOUSE FOR MAY 1st. Must be in the highest part of the city. Good repair. Address F 43, Box 1.

WANTED-TO BUY. I WISH TO PURCHASE THE LETTERS 'K' of O. from Soda Mint state your price. Write to me for address. N-44.

WANTED-TO RENT. ROOM MODERN CONVENIENT. FULL LOT EAST front, close location. 322 N. 48th St. Has been occupied for three years by Geo. Entrikin.

WANTED-TO RENT. CHURCH HOUSE NEAR Greenwood. 14. Address F 46, Box 1.

WANTED-TO RENT. FINE WHITE SAWMILL FOR FLOORS. ETC. for sale. Call at 1215 1/2 St. Tel. 458.

WANTED-TO RENT. A-SALESMAN TO SELL COATS TO DEALERS. We pay from \$60 to \$200 per month salary and expenses. Experience unnecessary. Permanent position. The De Mora Co., 201 Broadway.

WANTED-TO RENT. MADAME SMITH, 118 N. 12TH ST. Steam and alcohol bath. Tel. 594 1/2.

WANTED-TO RENT. PRIVATE HOME FOR LADIES BEFORE AND during confinement. Babies adopted and cared for. 118 N. 12th St.

WANTED-TO RENT. MONEY TO LOAN AT LOW RATES. O. F. Davis Co., 126 Farnam St. W-46.

WANTED-TO RENT. MONEY TO LOAN ON IMPROVED OMAHA real estate. Brennan-Love Co., 219 S. 16th St. W-49.

WANTED-TO RENT. MONEY TO LOAN ON IMPROVED REAL ESTATE in Omaha. Conner Bluffs & South Omaha. Pusey & Thomas, 508 First Nat'l Bank. W-42.

WANTED-TO RENT. MONEY TO LOAN ON IMPROVED OMAHA real estate. Brennan-Love Co., 219 S. 16th St. W-49.

WANTED-TO RENT. MONEY TO LOAN ON IMPROVED REAL ESTATE in Omaha. Conner Bluffs & South Omaha. Pusey & Thomas, 508 First Nat'l Bank. W-42.

WANTED-TO RENT. MONEY TO LOAN ON IMPROVED OMAHA real estate. Brennan-Love Co., 219 S. 16th St. W-49.

WANTED-TO RENT. MONEY TO LOAN ON IMPROVED REAL ESTATE in Omaha. Conner Bluffs & South Omaha. Pusey & Thomas, 508 First Nat'l Bank. W-42.

WANTED-TO RENT. MONEY TO LOAN ON IMPROVED OMAHA real estate. Brennan-Love Co., 219 S. 16th St. W-49.

WANTED-TO RENT. MONEY TO LOAN ON IMPROVED REAL ESTATE in Omaha. Conner Bluffs & South Omaha. Pusey & Thomas, 508 First Nat'l Bank. W-42.

WANTED-TO RENT. MONEY TO LOAN ON IMPROVED OMAHA real estate. Brennan-Love Co., 219 S. 16th St. W-49.

WANTED-TO RENT. MONEY TO LOAN ON IMPROVED REAL ESTATE in Omaha. Conner Bluffs & South Omaha. Pusey & Thomas, 508 First Nat'l Bank. W-42.

WANTED-TO RENT. MONEY TO LOAN ON IMPROVED OMAHA real estate. Brennan-Love Co., 219 S. 16th St. W-49.

BUSINESS CHANCES.

RESTAURANT FOR SALE. JOHN JAMESON. 104 N. 16th. J-3711 1/2.

WANT GOOD BUSINESS LOCATION FOR stock millinery first class city experience and stock. Address Box 22, Tekamah, Neb. J-3712 1/2.

FOR EXCHANGE. HORSES TO EXCHANGE FOR A GOOD LAWYER. Apply to J. H. Horton. 2-3673 1/2.

I HAVE A GOOD UPRIGHT PIANO for sale. 1200 lb. horse, young and good. Address F 43, Box 1. W-3713 1/2.

2 STOCKS MILLINERY AND FIXTURES. Tel. 43, 800-40; one or both for good residence. Furniture, home, business property, or farm. Box 22, Tekamah, Neb. W-3714 1/2.

FOR SALE-REAL ESTATE. KOTZNER PLACE BARGAINS. \$2,500. \$1,750 to \$2,500. J. J. Gibson, 514 First Nat'l Bank Bldg. Tel. 458.

BARGAINS, HORSES, LOTS AND FARMS. Sale or trade. F. K. Darling, Barker Bldg. RE-43.

HORSES, LOTS, FARMS, LANDS. Loans, also fire insurance. Bemis, Paxton Bldg. RE-45.

\$2,500 FOR 3-STORY BRICK BUILDING. 45 feet frontage, near 14th and Douglas Sts. \$2,500 for improved property on Cuming street, near 24th street. J. N. Penner, Opp. F. O. Box 22, Tekamah, Neb. RE-42.

4 PER CENT GROSS INVESTMENT. 1-STORY brick business building. Price \$2,500. Address E. L. Bee. RE-44.

FARM LANDS. C. F. HARRISON. 912 N. Y. 4. ROOM MODERN CONVENIENT. FULL LOT EAST front, close location. 322 N. 48th St. Has been occupied for three years by Geo. Entrikin.

FOR RENT, CHURCH HOUSE NEAR Greenwood. 14. Address F 46, Box 1.

FOR FLORIDA FRUIT OR VEGETABLE lands or winter homes (perfect climate) address Florida East Coast Ry. Co., 12th St., Chicago. RE-3715 1/2.

60-ACRE FARM. WELL CULTIVATED, plenty of fruit, in miles west of court house street. Bargain. A. M. Cowie, 117-3716 1/2.

LOST. ST. BERNARD DOG. ANSWER TO name of Richard, reward if returned to 825 S. 24th St. RE-47.

LOST OR STRAYED. BLACK HORSE AND phaeton, with W. A. Kinsey, 123 1/2, 14th St. Tel. 121. RE-48.

LOST. PAIR GOLD EYEGLASSES. LEAVE AT Box for reward. RE-49.

FINANCIAL. CALIFORNIA-MEXICAN GOLD MINE COMPANY. Capital \$1,500,000. James T. Ord, president; Moses P. O'Brien, vice president; Frank H. Johnson, secretary and treasurer. 40 Karbach block, Omaha, Neb. 255 1/2.

MONEY LOANED ON LIFE INSURANCE policies or bought. L. P. Van Norman, Minneapolis, Minn. W-3717 1/2.

MUSIC ART AND LANGUAGES. A. C. VAN SANT'S SCHOOL OF SHORTHAND and Typewriting. 712 N. Y. Life offers the following advantages: Individual instruction by experienced teachers; latest methods; touch system of typewriting if preferred; premiums that keep up an interest; participation in actual work; for students receive cash payments in some cases amounting to \$100.00; tuition money refunded for unexpired time, if students are not satisfied; free trial work. Interested parties invited to visit the school and see its facilities, methods, work of its students and class of students in attendance. W-3718 1/2.

SHORTHAND AND TYPEWRITING. BOYLES' SCHOOL. THE ONLY ONE in Omaha, where correct reporters are trained. 405-407 Bee Bldg. RE-48.

AT OMAHA BUS. COLLEGE, 16TH & DOUGLAS. OMAHA SHORT-HAND COLLEGE. POYD'S theater. W-3719 1/2.

A. C. VAN SANT'S SCHOOL OF SHORTHAND and Typewriting. 712 N. Y. Life offers the following advantages: Individual instruction by experienced teachers; latest methods; touch system of typewriting if preferred; premiums that keep up an interest; participation in actual work; for students receive cash payments in some cases amounting to \$100.00; tuition money refunded for unexpired time, if students are not satisfied; free trial work. Interested parties invited to visit the school and see its facilities, methods, work of its students and class of students in attendance. W-3718 1/2.

REMOVED. THE JOY TAILOR SYSTEM dress cutting school, 1911 Cuming St. W-3720 1/2.

GOVERNMENT NOTICES.

OMAHA, NEB., FEBRUARY 27, 1898. Sealed proposals, in triplicate, subject to the conditions, will be received by the Postoffice at Omaha, Nebraska, until 12 o'clock, noon, Thursday, March 10th, 1898, and then opened for furnishing and delivery of mail for the route between Omaha, Neb., and Council Bluffs, Iowa, under contract No. 11. S. reserves the right to accept or reject any or all bids, or any part thereof. Information furnished upon application to this office. Envelopes containing proposals to be securely sealed and marked "Proposals for Mail," and addressed to Capt. SAM R. JONES, Quartermaster.

NOTICE TO CONTRACTORS. Sealed bids for the construction of the East Colorado on the Exposition grounds will be received until 11 o'clock a. m. Thursday, February 28, 1898. Plans and specifications can be seen at the Department office, corner Fifteenth and Douglas streets, or sets will be furnished bidders at cost. The right is reserved to reject any or all bids, or any part thereof, or to award the contract to the lowest bidder. Manager Grounds and Building Dept., Trans-mission and International Exposition.

POSTOFFICE NOTICE. (Should be read DAILY by all interested parties.) Changes may occur at any time. Foreign mails for the week ending February 12, 1898, will close (PROMPTLY) in all cases at the following times: PARCELS POST MAILS close one hour earlier than closing time shown below.

Trans-Atlantic Mails. TUESDAY-At 6 a. m. for EUROPE, per S. S. Havila, via Southampton and Bremen (letters for Ireland must be directed "per Havila").

WEDNESDAY-At 8 a. m. (supplementary 9 a. m.) for EUROPE, per S. S. Havila, via Southampton (letters for Ireland must be directed "per Havila"); at 9 a. m. (supplementary 10 a. m.) for EUROPE, per S. S. Teutonia, via Queenstown; at 10 a. m. for BELGIUM direct, per S. S. Koningin Wilhelmina, via Antwerp (letters must be directed "per Koninkin").

SATURDAY-At 6 a. m. for EUROPE, per S. S. Lucania, via Queenstown (letters for France, Switzerland, Italy, Spain, Portugal, Egypt and British India must be directed "per Lucania"); at 7 a. m. for FRANCE, SWITZERLAND, ITALY, SPAIN, PORTUGAL, EGYPT AND BRITISH INDIA, per S. S. La Gascogne, via Havre (letters for the British Empire must be directed "per La Gascogne"); at 8 a. m. for NETH-ERLANDS direct, per S. S. Spaarndam, via Rotterdam (letters for Holland must be directed "per Spaarndam"); at 8 a. m. for GEN-NOVA, per S. S. Normandia (letters must be directed "per Normandia"); at 10 a. m. for SCOTLAND direct, per S. S. Anthonia, via Glasgow (letters must be directed "per Anthonia").

PRINTED MATTER. ETC.-German steamers sailing on Tuesday take Printed Matter for Germany and Sweden. Addressed Printed Matter for other countries, such as France, Italy and White Star steamers on Wednesday. German steamers on Thursday, and Cunard, French and German steamers on Friday. Printed Matter, etc. for all countries for which space is available to carry mail.

After the closing of the Supplementary Trans-Atlantic Mails above, scheduled additional monthly mails are opened on the pier of the Grand Tower, Omaha, Neb., on the following days, and remain open until within Ten Minutes of the hour of sailing of steamer.

Mails for South and Central America, West Indies, Etc. TUESDAY-At 1 p. m. for INAGUA and HAITI, per S. S. Saginaw; at 4 1/2 p. m. for COSTA RICA, GUATEMALA, EL SALVADOR, HONDURAS, NICARAGUA, PANAMA, CUBA, HAITI, DOMINICAN REPUBLIC, VENEZUELA, GUAYAMA, SANTIAGO DE CUBA, per S. S. Niagara; at 1 p. m. for PORT ANTONIO, per steamer from Boston, via Havana.

WEDNESDAY-At 2 30 a. m. for PORT ANTONIO, per steamer from Philadelphia; at 8 a. m. for BUREAU, per S. S. Trinidad; at 1 p. m. for CUBA, per S. S. Trinidad, via Havana.

THURSDAY-At 10 a. m. (supplementary 11 a. m.) for CENTRAL AMERICA (except Costa Rica) and SOUTH PACIFIC ISLANDS, per S. S. Alliances, via Colon (letters for Guatemala must be directed "per Alliances"); at 11 a. m. for MEXICO, per S. S. Mexico, via Progress and Vera Cruz (letters must be directed "per Mexico"); at 1 p. m. for equipment, per S. S. NASSAU, N. P. per S. S. NASSAU, N. P. and SANTIAGO DE CUBA, per S. S. Niagara; at 1 p. m. (supplementary 2 p. m.) for ST. JAMES, per S. S. NASSAU, N. P. per S. S. NASSAU, N. P. and SANTIAGO DE CUBA, per S. S. Niagara; at 1 p. m. (supplementary 2 p. m.) for ST. JAMES, per S. S. NASSAU, N. P. per S. S. NASSAU, N. P. and SANTIAGO DE CUBA, per S. S. Niagara.

FRIDAY-At 12 30 p. m. (supplementary 1 p. m.) for ST. KITES, BARBADOS and DEMARARA, per S. S. Caribbea; at 1 p. m. for CAMPECHE, CHIAPEAS, TABASCO and YUCATAN, per S. S. City of Washington; at 7 p. m. for PORT ANTONIO, per steamer from Boston, via Havana.

SATURDAY-At 7 a. m. for PORTINNE (LION), JAMAICA, SAN JUAN, ST. DOMINGO, HAITI, AUSTRIAN, JACQUEL, JEREMIE and SANTA MARTHA, per S. S. HAITI; at 11 a. m. (supplementary 11 30 a. m.) for VENEZUELA and CUBA, per S. S. Vanilla and Carthage; at 8 30 p. m. for NEWFOUNDLAND, per steamer from North Sydney; at 9 p. m. for PORT ANTONIO, per steamer from Boston, via Havana.

SUNDAY-At 1 p. m. for NASSAU, N. P. per S. S. Miami, from Miami, Fla. Mails for Newfoundland, by rail to Halifax and thence by steamer, close at this office daily at 6 30 p. m. Mails for Quebec, by rail to Boston and thence by steamer, close at this office daily at 8 30 p. m. Mails for Cuba close at this office daily at 7 30 a. m. for forwarding steamers sailing (Monday and Thursday) from Port Tampa, Fla. Mails for Mexico, close here daily up to February 22 at 6 30 p. m. Mails for Hawaii, per S. S. Australia, close here daily up to February 22 at 6 30 p. m. Mails for Australia (except West Australia), which are forwarded by the Pacific Railroad, close here daily up to February 22 at 6 30 p. m. Mails for Samoa Islands, per S. S. Mariposa (from San Francisco), close here daily up to February 22 at 6 30 p. m. Mails for Samoa Islands, per S. S. Mariposa (from San Francisco), close here daily up to February 22 at 6 30 p. m. Mails for Samoa Islands, per S. S. Mariposa (from San Francisco), close here daily up to February 22 at 6 30 p. m.

Trans-Pacific Mails. Mails for China, Japan and Hawaii, per S. S. City of Rio Janeiro (from San Francisco), close here daily up to February 22 at 6 30 p. m. Mails for China and Japan, per S. S. Columbia (from Tacoma), close here daily up to February 22 at 6 30 p. m. Mails for Hawaii, per S. S. Australia, close here daily up to February 22 at 6 30 p. m. Mails for Australia (except West Australia), which are forwarded by the Pacific Railroad, close here daily up to February 22 at 6 30 p. m. Mails for Samoa Islands, per S. S. Mariposa (from San Francisco), close here daily up to February 22 at 6 30 p. m. Mails for Samoa Islands, per S. S. Mariposa (from San Francisco), close here daily up to February 22 at 6 30 p. m. Mails for Samoa Islands, per S. S. Mariposa (from San Francisco), close here daily up to February 22 at 6 30 p. m.

RAILROADS. CHICAGO, ROCK ISLAND & PACIFIC RAILROAD-TICKET OFFICE. 121 Farnam Street, Telephone 228. Depot, Tenth and Mason Streets. Telephone 128.

CHICAGO, BURLINGTON & MISSOURI RIVER RAILROAD-Ticket Office, 152 Farnam Street, Telephone 228. Depot, Tenth and Mason Streets. Telephone 128.

PORT ARTHUR ROUTE. Omaha & St. Louis Railroad-Ticket Office, 121 Farnam Street, Telephone 228. Depot, Tenth and Mason Streets. Telephone 128.

WALSH RAILROAD-TICKET OFFICE. 121 Farnam Street, Telephone 228. Depot, Tenth and Mason Streets. Telephone 128.

CHICAGO, ROCK ISLAND & PACIFIC RAILROAD-Ticket Office, 121 Farnam Street, Telephone 228. Depot, Tenth and Mason Streets. Telephone 128.

CHICAGO, BURLINGTON & MISSOURI RIVER RAILROAD-Ticket Office, 152 Farnam Street, Telephone 228. Depot, Tenth and Mason Streets. Telephone 128.

PORT ARTHUR ROUTE. Omaha & St. Louis Railroad-Ticket Office, 121 Farnam Street, Telephone 228. Depot, Tenth and Mason Streets. Telephone 128.

WALSH RAILROAD-TICKET OFFICE. 121 Farnam Street, Telephone 228. Depot, Tenth and Mason Streets. Telephone 128.

CHICAGO, ROCK ISLAND & PACIFIC RAILROAD-Ticket Office, 121 Farnam Street, Telephone 228. Depot, Tenth and Mason Streets. Telephone 128.

RAILROADS.

UNION PACIFIC-THE OVERLAND ROUTE-Ticket Office, N. W. Corner Tenth and Farnam Streets. Telephone 228. Depot, Tenth and Mason Streets. Telephone 128.

"The Overland Limited" for Denver, Salt Lake, Western Points, etc. Leave. Arrive. \$1.50 am. \$4.35 pm.

Black Hills, Deadwood and Hot Springs. Leave. Arrive. \$1.50 am. \$4.35 pm.

Chicago, Burlington & Missouri River Railroad-Ticket Office, 152 Farnam Street, Telephone 228. Depot, Tenth and Mason Streets. Telephone 128.

PORT ARTHUR ROUTE. Omaha & St. Louis Railroad-Ticket Office, 121 Farnam Street, Telephone 228. Depot, Tenth and Mason Streets. Telephone 128.

WALSH RAILROAD-TICKET OFFICE. 121 Farnam Street, Telephone 228. Depot, Tenth and Mason Streets. Telephone 128.

CHICAGO, ROCK ISLAND & PACIFIC RAILROAD-Ticket Office, 121 Farnam Street, Telephone 228. Depot, Tenth and Mason Streets. Telephone 128.

CHICAGO, BURLINGTON & MISSOURI RIVER RAILROAD-Ticket Office, 152 Farnam Street, Telephone 228. Depot, Tenth and Mason Streets. Telephone 128.

PORT ARTHUR ROUTE. Omaha & St. Louis Railroad-Ticket Office, 121 Farnam Street, Telephone 228. Depot, Tenth and Mason Streets. Telephone 128.

WALSH RAILROAD-TICKET OFFICE. 121 Farnam Street, Telephone 228. Depot, Tenth and Mason Streets. Telephone 128.

CHICAGO, ROCK ISLAND & PACIFIC RAILROAD-Ticket Office, 121 Farnam Street, Telephone 228. Depot, Tenth and Mason Streets. Telephone 128.

CHICAGO, BURLINGTON & MISSOURI RIVER RAILROAD-Ticket Office, 152 Farnam Street, Telephone 228. Depot, Tenth and Mason Streets. Telephone 128.

PORT ARTHUR ROUTE. Omaha & St. Louis Railroad-Ticket Office, 121 Farnam Street, Telephone 228. Depot, Tenth and Mason Streets. Telephone 128.

WALSH RAILROAD-TICKET OFFICE. 121 Farnam Street, Telephone 228. Depot, Tenth and Mason Streets. Telephone 128.

CHICAGO, ROCK ISLAND & PACIFIC RAILROAD-Ticket Office, 121 Farnam Street, Telephone 228. Depot, Tenth and Mason Streets. Telephone 128.

CHICAGO, BURLINGTON & MISSOURI RIVER RAILROAD-Ticket Office, 152 Farnam Street, Telephone 228. Depot, Tenth and Mason Streets. Telephone 128.

PORT ARTHUR ROUTE. Omaha & St. Louis Railroad-Ticket Office, 121 Farnam Street, Telephone 228. Depot, Tenth and Mason Streets. Telephone 128.

WALSH RAILROAD-TICKET OFFICE. 121 Farnam Street, Telephone 228. Depot, Tenth and Mason Streets. Telephone 128.

CHICAGO, ROCK ISLAND & PACIFIC RAILROAD-Ticket Office, 121 Farnam Street, Telephone 228. Depot, Tenth and Mason Streets. Telephone 128.

CHICAGO, BURLINGTON & MISSOURI RIVER RAILROAD-Ticket Office, 152 Farnam Street, Telephone 228. Depot, Tenth and Mason Streets. Telephone 128.

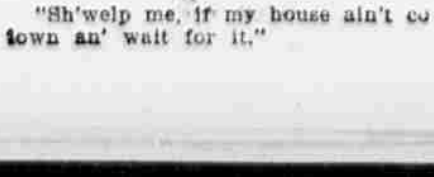
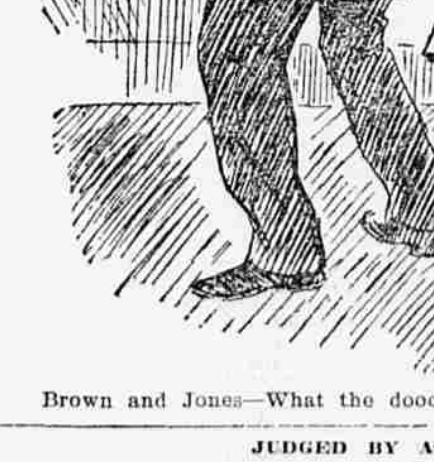
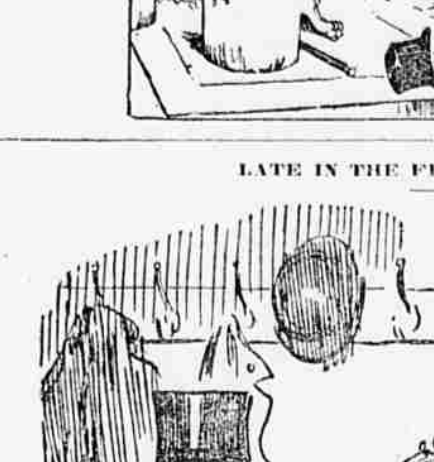
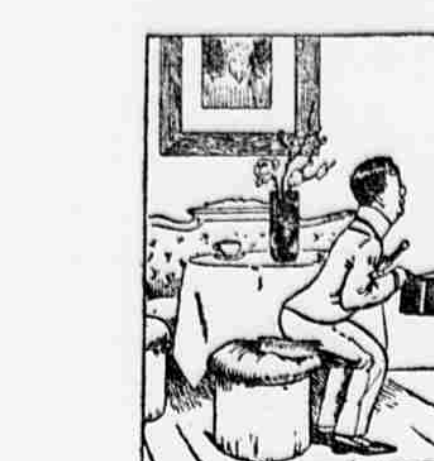
PORT ARTHUR ROUTE. Omaha & St. Louis Railroad-Ticket Office, 121 Farnam Street, Telephone 228. Depot, Tenth and Mason Streets. Telephone 128.

WALSH RAILROAD-TICKET OFFICE. 121 Farnam Street, Telephone 228. Depot, Tenth and Mason Streets. Telephone 128.

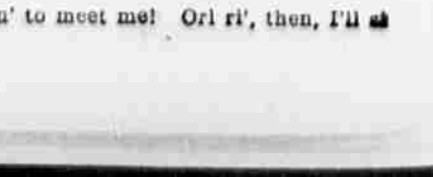
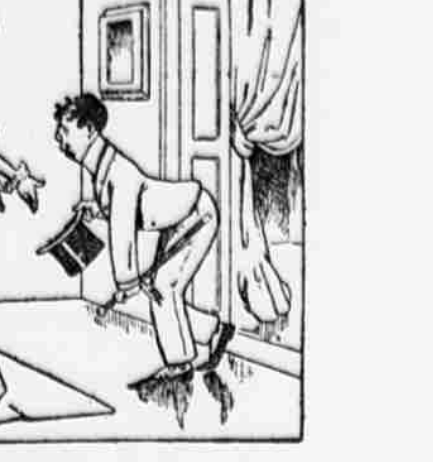
CHICAGO, ROCK ISLAND & PACIFIC RAILROAD-Ticket Office, 121 Farnam Street, Telephone 228. Depot, Tenth and Mason Streets. Telephone 128.

CHICAGO, BURLINGTON & MISSOURI RIVER RAILROAD-Ticket Office, 152 Farnam Street, Telephone 228. Depot, Tenth and Mason Streets. Telephone 128.

THE BASHFUL SUTTON, OR, A BRUSH TO THE RESCUE.



LATE IN THE FESTIVE SEASON.



Brown and Jones-What the dooce are you playin' at?

JUDGED BY APPEARANCES.

How Speaker Reed Directs the Leaders of the Floor.

The average spectator in the gallery, and for that matter, many members on the floor, lose some of the fine methods Speaker Reed employs in maneuvering a fight in the House, relates the Washington Post. While he is always ready in his rulings and unhesitating in his course during a stormy session, he sometimes grows restless under the methods that his leaders pursue on the floor. So in his own way Mr. Reed prompts them