

COMMERCIAL AND FINANCIAL.

Speculative Markets on Change Had a Demoralizing Shade.

ENGLISH CABLES WERE EASY ALL DAY

Selling of American Securities Abroad Tended to Check Business and Hit Afloat.

CHICAGO, Dec. 19.—The speculative market on change had a demoralizing shade today.

A falling stock market, persistent gold exports and general depression in business are finding their natural expression in the wheat pit.

On the break it made a new record, selling at the lowest point touched on the crop. News and the conditions were generally very discouraging to holders.

There was an absence of crop damage news from the Cincinnati district. Crop summary was rather favorable.

The business situation is also looked upon as unfavorable. London is reported as selling American securities, and there is a growing fear that when the treasury tries to replenish the gold reserve it will not get it so easily as before.

Estimated receipts for tomorrow: Wheat, 100 cars; corn, 200 cars; oats, 100 cars; hogs, 50,000 head.

Table with columns: Wheat, Corn, Oats, Hogs. Rows showing prices for various grades and quantities.

NEW YORK GENERAL MARKET.

Closing Quotations on the Principal Commodities and Staples.

NEW YORK, Dec. 19.—FLOUR—Receipts, 24,000 bbls.; exports, 5,000 bbls.

WHEAT—No. 2 spring, 93¢; No. 3 spring, 92¢.

CORN—No. 2, 47¢; No. 3, 46¢.

COFFEE—Steady; yellow western, coarse, 18¢.

OMAHA GENERAL MARKET.

Condition of Trade and Quotations on Staple and Fancy Produce.

EGGS—Strictly fresh stock, 10¢; held stock, 10 1/2¢.

CHICKEN—Packing stock, 10¢; fair to good country, 14¢; choice to fancy country, 15¢.

DUCK—Choice, 10¢; fair to good, 9¢; held stock, 10 1/2¢.

WHEAT—No. 2 spring, 93¢; No. 3 spring, 92¢.

CORN—No. 2, 47¢; No. 3, 46¢.

OATS—No. 2, 31¢; No. 3, 30¢.

HAY—No. 1, 12¢; No. 2, 11¢.

MEAT—Pork, 10¢; beef, 11¢.

GRAIN—Wheat, 93¢; corn, 47¢.

PRODUCE—Butter, 15¢; eggs, 10¢.

MARKET—Steady; flour, 18¢.

WHEAT—No. 2 spring, 93¢.

CORN—No. 2, 47¢.

COFFEE—Steady; yellow western, coarse, 18¢.

STOCKS AND BONDS.

Securities Subjected to Pressure by Foreign and Domestic Dealers.

NEW YORK, Dec. 19.—The stock market today was subjected to pressure by foreign and domestic dealers for both accounts.

Very Light Run of Cattle Finds a Demand Leger for Supplies.

THURSDAY, Dec. 19.—Receipts and shipments for the past twenty-four hours, as compared with the previous six days, are as follows:

Table showing receipts and shipments for cattle, hogs, and sheep.

Only a few stocks were active today. The market was generally flat.

WHEAT—No. 2 spring, 93¢.

CORN—No. 2, 47¢.

OATS—No. 2, 31¢.

HAY—No. 1, 12¢.

MEAT—Pork, 10¢.

GRAIN—Wheat, 93¢.

PRODUCE—Butter, 15¢.

MARKET—Steady; flour, 18¢.

OMAHA LIVE STOCK MARKET.

Very Light Run of Cattle Finds a Demand Leger for Supplies.

THURSDAY, Dec. 19.—Receipts and shipments for the past twenty-four hours, as compared with the previous six days, are as follows:

Table showing receipts and shipments for cattle, hogs, and sheep.

Only a few stocks were active today. The market was generally flat.

WHEAT—No. 2 spring, 93¢.

CORN—No. 2, 47¢.

OATS—No. 2, 31¢.

HAY—No. 1, 12¢.

MEAT—Pork, 10¢.

GRAIN—Wheat, 93¢.

PRODUCE—Butter, 15¢.

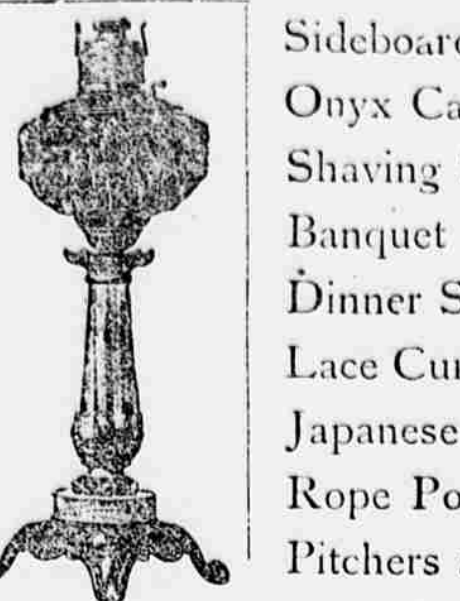
MARKET—Steady; flour, 18¢.

WHEAT—No. 2 spring, 93¢.

EXTRAORDINARY INDUCEMENTS

Realizing that a great many people in this city desire to be remembered to their friends during the holidays, but are not in position to pay cash down for such purchases, we have decided to place our magnificent stock of up-to-date furniture and house furnishings at their disposal, and make terms that will be most convenient.

Piano Stools, Book Cases, Music Cabinets, China Closets, Parlor Tables, Chiffoniers, Specimen Cases, Rocking Chairs, Easels and Screens.



Sideboards, Onyx Cabinets, Shaving Stands, Banquet Lamps, Dinner Sets, Lace Curtains, Japanese Rugs, Rope Portieres, Pitchers and Vases.

MAGNIFICENT DISPLAY ON FIRST FLOOR.



You can select any article and have it set aside for you to be delivered later. Make your selections early. We will arrange terms to suit.

Popular Prices.

OMAHA FURNITURE & CARPET CO

1211 and 1213 Farnam Street.

Table showing various items and prices, including pianos, desks, and chairs.

OUR FREE LETTER

Reviewing the grain and stock markets, with a special study on the Chicago Stock Exchange.

J. R. WILLAR & CO.

Members Chicago Board of Trade, New York Produce Exchange, New York Stock Exchange.

JAMES E. BOYD & CO. COMMISSION

GRAIN & PROVISIONS: AND STOCKS

F. P. SMITH & CO.

GRAIN & AND PROVISIONS

Branch offices at prominent points in all sections of the United States.

Financial Notes.

NEW YORK, Dec. 19.—Clearings, \$1,558,967; balance \$21,008,000.

CHICAGO, Dec. 19.—Clearings, \$2,440,444; balance \$39,027,000.

MINNEAPOLIS, Dec. 19.—Clearings, \$1,150,000; balance \$15,000,000.

ST. LOUIS, Dec. 19.—Clearings, \$1,450,000; balance \$18,000,000.

NEW ORLEANS, Dec. 19.—Clearings, \$1,200,000; balance \$16,000,000.

MEMPHIS, Dec. 19.—Clearings, \$1,100,000; balance \$15,000,000.

INDIANAPOLIS, Dec. 19.—Clearings, \$1,000,000; balance \$14,000,000.

CINCINNATI, Dec. 19.—Clearings, \$900,000; balance \$13,000,000.

PHILADELPHIA, Dec. 19.—Clearings, \$800,000; balance \$12,000,000.

PITTSBURGH, Dec. 19.—Clearings, \$700,000; balance \$11,000,000.

CLEVELAND, Dec. 19.—Clearings, \$600,000; balance \$10,000,000.

ST. PAUL, Dec. 19.—Clearings, \$500,000; balance \$9,000,000.

DENVER, Dec. 19.—Clearings, \$400,000; balance \$8,000,000.

SALT LAKE CITY, Dec. 19.—Clearings, \$300,000; balance \$7,000,000.