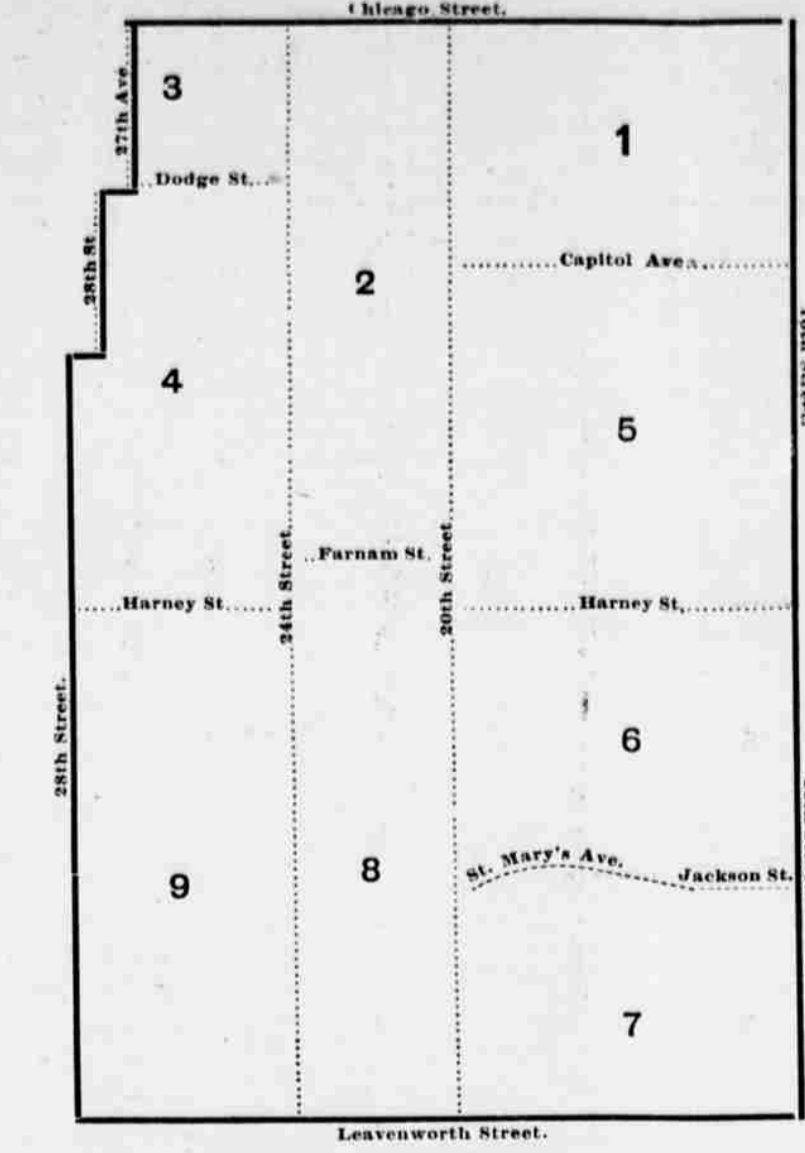


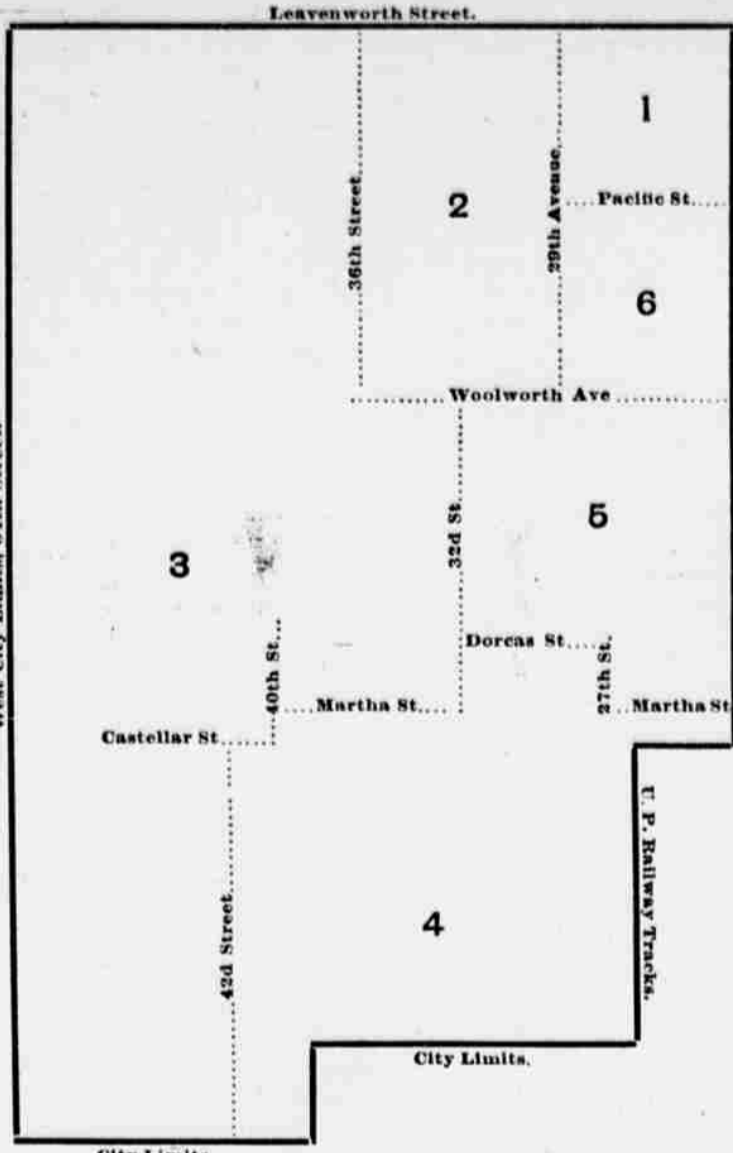
MAP OF THE FIRST WARD.

**FIRST WARD VOTING BOOTHS.**  
 First District—Northeast corner Twelfth and Pacific.  
 Second District—Northwest corner Tenth and Center.  
 Third District—Northeast corner Thirteenth and Vinton.  
 Fourth District—Northeast corner Eighth and Pacific.  
 Fifth District—Northeast corner Eighth and Hickory.  
 Sixth District—Northwest corner Ninth and Hancock.  
 Seventh District—Northeast corner Sixth and Pierce.  
 Eighth District—North side Center, between Fifth and Sixth.



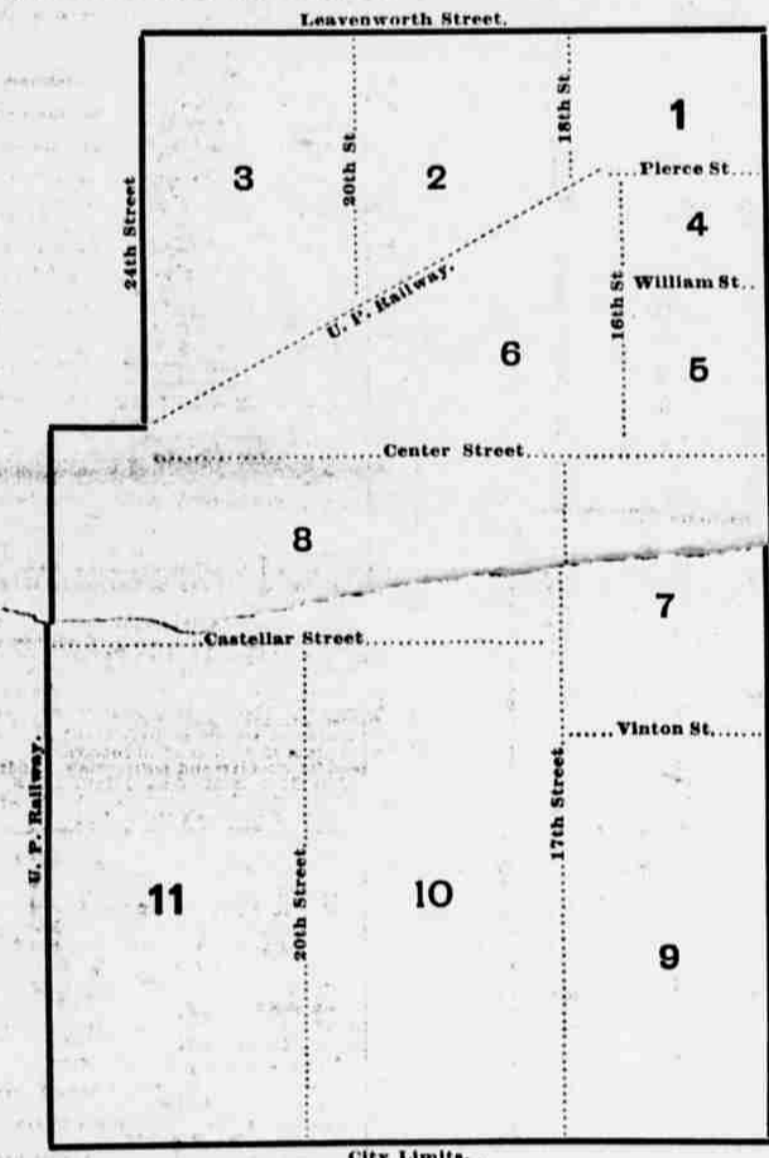
MAP OF THE FOURTH WARD.

**FOURTH WARD VOTING BOOTHS.**  
 First District—East side Seventeenth, between Davenport and Chicago.  
 Second District—Northeast corner Twenty-second and Dodge.  
 Third District—Northeast corner Twenty-fifth and Lavoisier.  
 Fourth District—Northwest corner Twenty-fifth and Farnam.  
 Fifth District—Northwest corner Eighteenth and Douglas.  
 Sixth District—Southeast corner Eighteenth and St. Mary's avenue.  
 Seventh District—Northwest corner Eighteenth and Leavenworth.  
 Eighth District—South side Hickory street, between Twentieth and Twenty-fourth.  
 Ninth District—Twenty-sixth street, between St. Mary's avenue and Half-Howard.



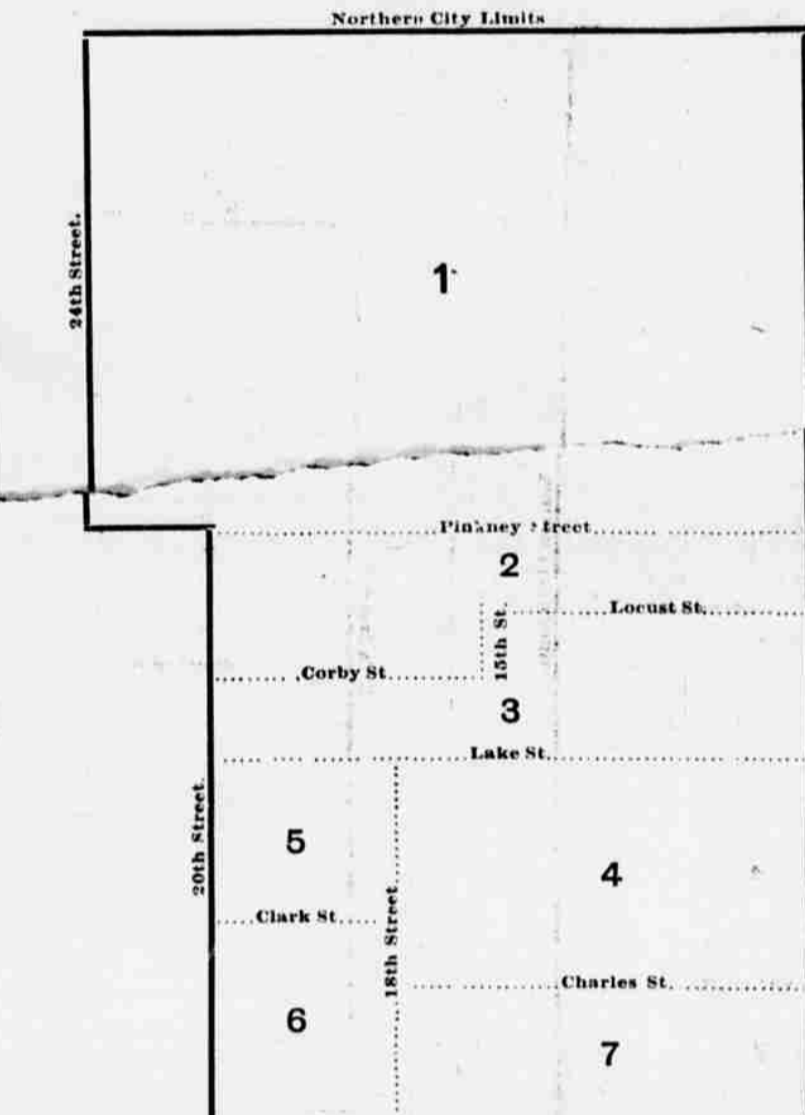
MAP OF THE SEVENTH WARD.

**SEVENTH WARD VOTING BOOTHS.**  
 First District—Southwest corner Twenty-eighth and Mason.  
 Second District—Southeast corner Thirtieth avenue and Poppleton avenue.  
 Third District—Northwest corner Center and Thirty-third.  
 Fourth District—Northwest corner Twenty-ninth and Arbor.  
 Fifth District—Northeast corner Twenty-ninth and Hickory.  
 Sixth District—Northeast corner Twenty-ninth street and Poppleton avenue.



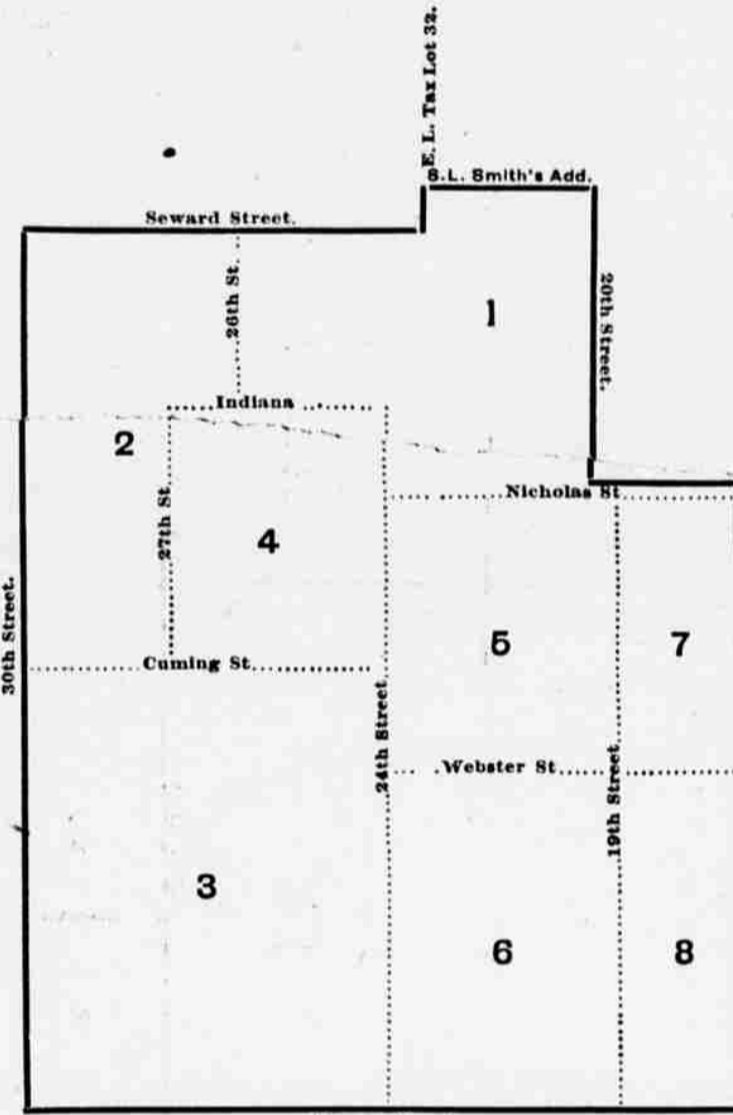
MAP OF THE SECOND WARD.

**SECOND WARD VOTING BOOTHS.**  
 First District—South side Leavenworth, between Fifteenth and Sixteenth.  
 Second District—Northwest corner Nineteenth and Mason.  
 Third District—Northwest corner Twentieth and Poppleton avenue.  
 Fourth District—South side Pierce, between Fifteenth and Sixteenth.  
 Fifth District—Northeast corner Sixteenth and Center.  
 Sixth District—Southeast corner Seventeenth and Williams.  
 Seventh District—Northwest corner Sixteenth and Martha.  
 Eighth District—Northeast corner Twentieth and Martha.  
 Ninth District—Northwest corner Thirtieth and Valley.  
 Tenth District—Southeast corner Twentieth and Vinton.  
 Eleventh District—Northeast corner Twenty-fourth and Vinton.



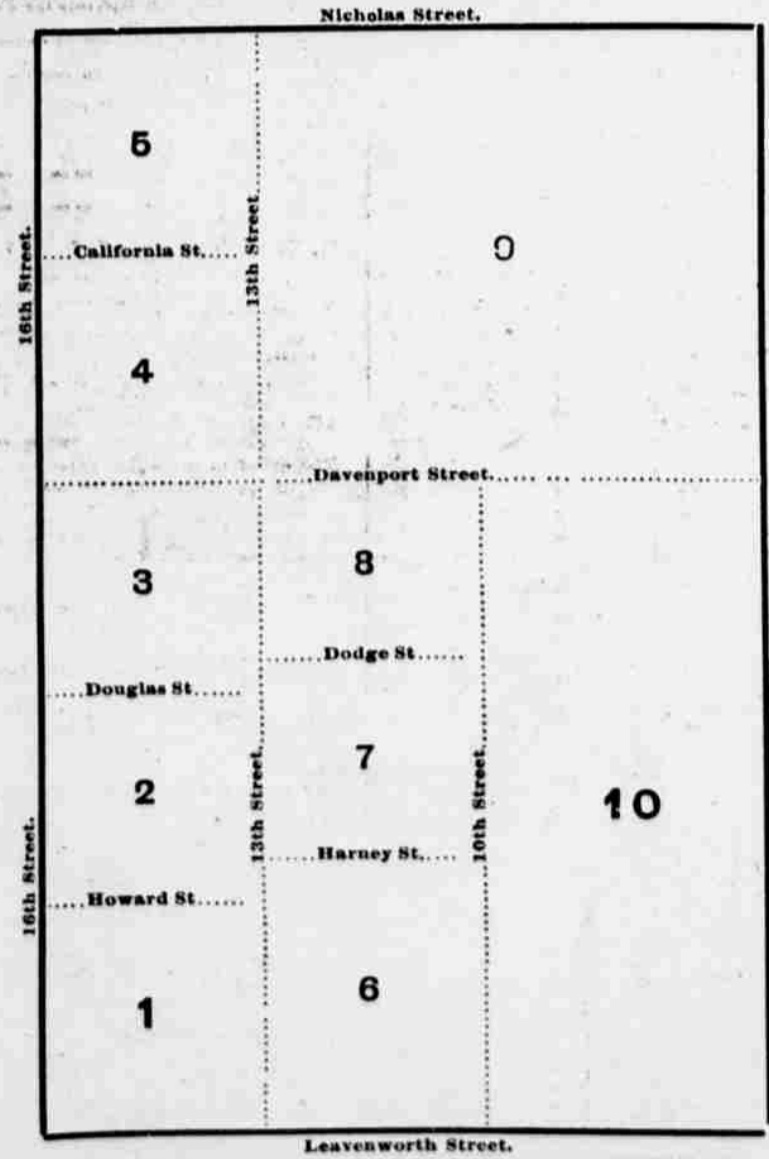
MAP OF THE FIFTH WARD.

**FIFTH WARD VOTING BOOTHS.**  
 First District—East side Sherman avenue, opposite Manderson.  
 Second District—Southeast corner Sherman avenue and Binney.  
 Third District—Northeast corner Eighteenth and Lake.  
 Fourth District—Southeast corner Sherman avenue and Grace.  
 Fifth District—Southwest corner Nineteenth and Burdette.  
 Sixth District—Northwest corner Nineteenth and Charles.  
 Seventh District—Southeast corner Eighteenth and Charles.



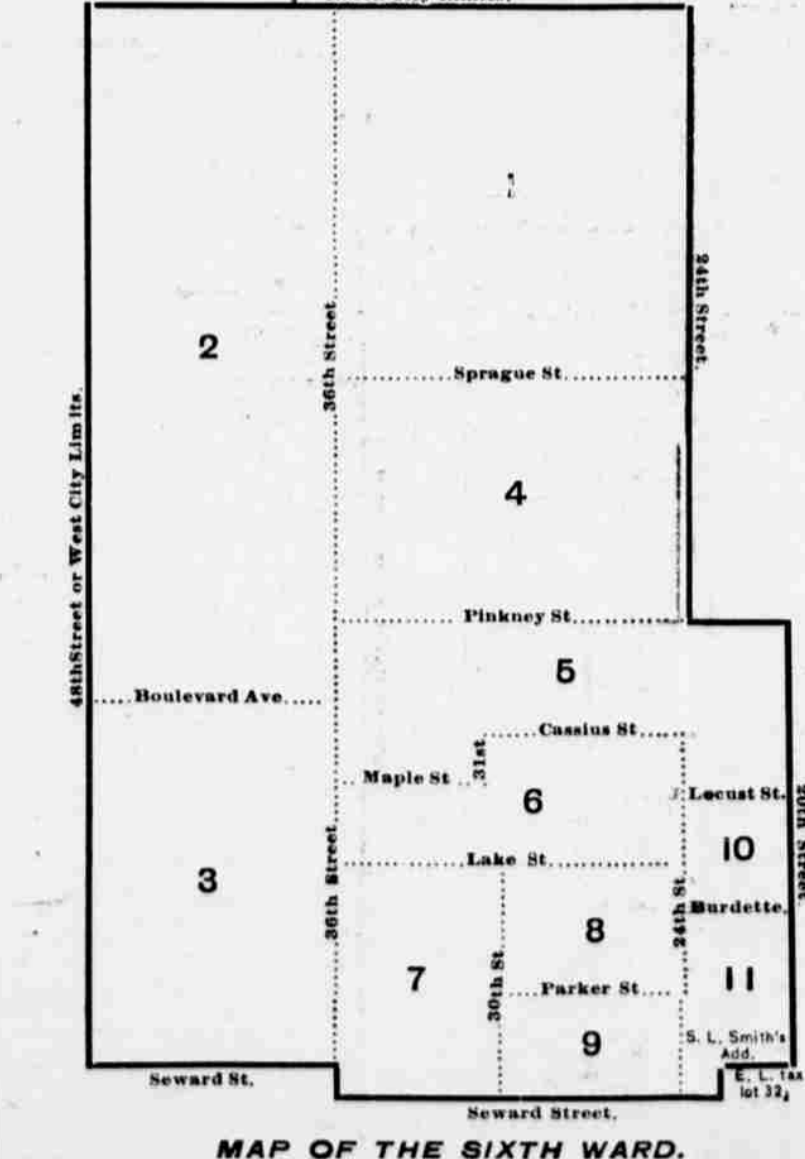
MAP OF THE EIGHTH WARD.

**EIGHTH WARD VOTING BOOTHS.**  
 First District—Southeast corner Twenty-fourth and Paul.  
 Second District—Northwest corner Twenty-seventh and Caldwell.  
 Third District—Northeast corner Twenty-sixth and California.  
 Fourth District—Northwest corner Twenty-fifth avenue and Cuming.  
 Fifth District—Northeast corner Twenty-first and Cuming.  
 Sixth District—West side Twenty-first, between Cass and California.  
 Seventh District—Northeast corner Eighteenth and Cuming.  
 Eighth District—Southwest corner Seventeenth and California.



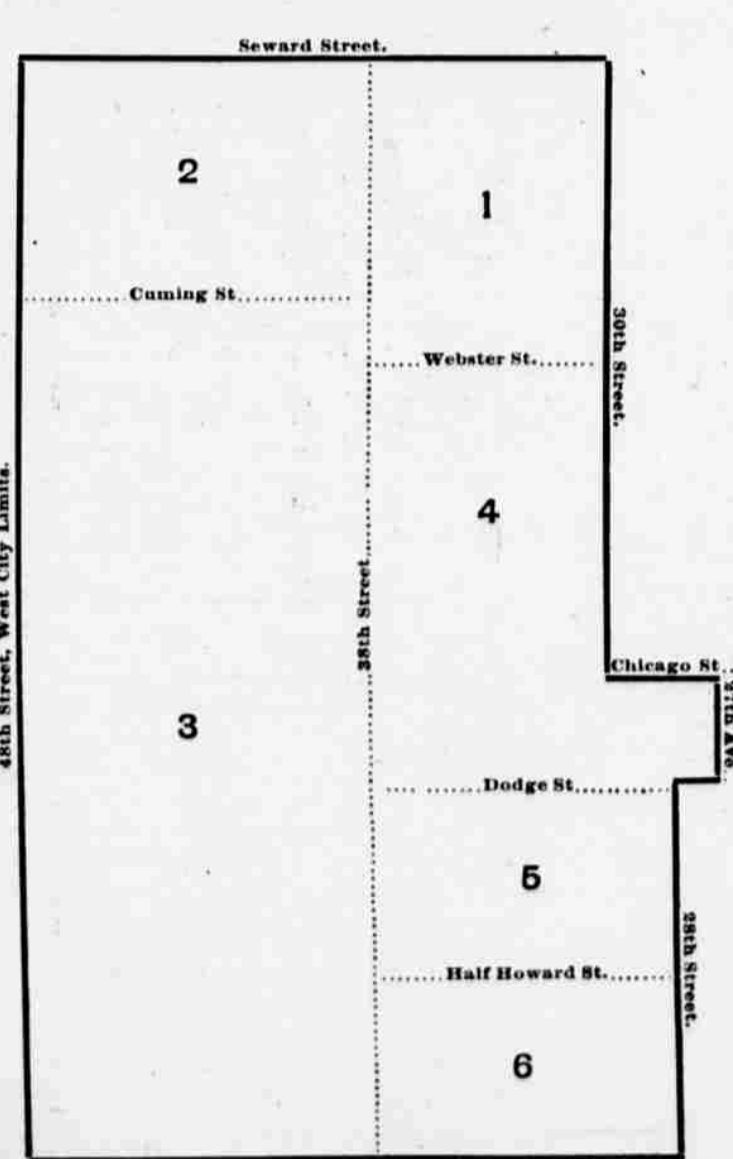
MAP OF THE THIRD WARD.

**THIRD WARD VOTING BOOTHS.**  
 First District—Northeast corner Fourteenth and Jackson.  
 Second District—Southwest corner Fifteenth and Harney.  
 Third District—Northwest corner Fourteenth and Capitol avenue.  
 Fourth District—Southeast corner Fourteenth and Chicago.  
 Fifth District—Southwest corner Fifteenth and Burl.  
 Sixth District—Northeast corner Twelfth and Jackson.  
 Seventh District—Southwest corner Eleventh and Douglas.  
 Eighth District—Northwest corner Tenth and Capitol avenue.  
 Ninth District—Northwest corner Twelfth and Chicago.  
 Tenth District—Northwest corner Ninth and Howard.



MAP OF THE SIXTH WARD.

**SIXTH WARD VOTING BOOTHS.**  
 First District—Northeast corner Thirtieth and Ames avenue.  
 Second District—Southwest corner Forty-second and Ames avenue.  
 Third District—Northeast corner Forty-fifth and Grant.  
 Fourth District—Southeast corner Twenty-seventh and Manderson.  
 Fifth District—Northeast corner Twenty-fourth and Spencer.  
 Sixth District—Southeast corner Twenty-eighth avenue and Corby.  
 Seventh District—Northeast corner Thirty-third and Parker.  
 Eighth District—Northeast corner Twenty-seventh and Burdette.  
 Ninth District—Northeast corner Twenty-seventh and Franklin.  
 Tenth District—Northeast corner Twenty-second and Lake.  
 Eleventh District—Southeast corner Twenty-fourth and Grace.



MAP OF THE NINTH WARD.

**NINTH WARD VOTING BOOTHS.**  
 First District—Southwest corner Thirty-second and Cuming.  
 Second District—Northwest corner Fortieth and Cuming.  
 Third District—Northwest corner Fortieth and Farnam.  
 Fourth District—North side Davenport, west of Thirty-second avenue.  
 Fifth District—Northeast corner Thirty-first avenue and Farnam.  
 Sixth District—Northwest corner Twenty-ninth avenue and Leavenworth.

**Healthy Kidneys make Pure Blood**  
**Dr. Hobb's Sparagus Kidney Pills**  
 Cure all Kidney Diseases.  
 At all druggists, or by mail prepaid, for 50c. a box. Send for pamphlet.  
 Hobb's Medicine Co., Chicago, San Francisco.

AS CUSTOMARY  
**HOBB SPARAGUS PILLS**  
 will be sold in Omaha by the  
 SHERMAN AND MCCONNELL DRUG CO.,  
 1513 Dodge street, second door west of P. O.

**THE GREAT HUDYAN**  
 This extraordinary Rejuvenator is the most wonderful discovery of the age. It has been endorsed by the leading scientific men of Europe and America. Hudyan is purely vegetable. Hudyan stops Prematureness of the life charge in 20 days. Cures all cases of PANHOOD.

quickly. Over 2,000 private endorsements. Prematureness means impotence in the first stage. It is a symptom of seminal weakness and barrenness. It can be cured in 20 days by the use of Hudyan. The new discovery was made by the Specialists of the old famous Hudson Medical Institute. It is the strongest viatical made. It is very powerful, but harmless. Sold for \$1.00 a package or 6 packages for \$5.00 (plain sealed boxes). Written guarantee given for a cure. If you buy six boxes and are not entirely cured, six more will be sent to you free of all charges. Send for circular and testimonials. Address HUDSON MEDICAL INSTITUTE, Junction Stockton, Market & Mills Sts., San Francisco, Cal.

**It's in the Air**  
 on all social occasions. You cannot go to the opera without gaining a whiff of IMPERIAL CROWN

**DURPLE AZALEA**  
 THE FASHIONABLE PERFUME. Flowery, refreshing, delicate and lasting.  
 For sale by druggists only. IMPERIAL CROWN PERFUMERY CO., SAINT LOUIS. MEYER BROTHERS DRUG CO., AGENTS. ALSO TRY IMPERIAL CROWN (WEDDING BELLS) Two new PEACH BLOW odors.

**DOCTOR**  
 Searles & Searles  
 119 S. 14th St.  
 We cure Catarrh, all diseases of the Nose, Throat, Chest, Stomach, Bowels and Liver. Hydrocele, Varicocele, Stricture, Weak Men, Sexual, Blood, Skin and Kidney Diseases, Gonorrhoea, Syphilis.  
**WEAK MEN.** All Private Diseases and Disorders of Men. Treatment by mail, consultation free.  
**SPECIALISTS**  
 in the treatment of all NERVOUS, CHRONIC and PRIVATE DISEASES.  
 Treatment for all forms of FEMALE WEAKNESS. Call on or address, with stamp.  
 Dr. Searles & Searles, 119 S. 14th St., Omaha, Neb.

**Monthly Pains**  
 and anxieties can be relieved to a copulativity by using  
**Dr. Chevalier's Female Pills.**

Price \$1.00 per box. If you are timid and in doubt as to what will relieve you, send for these pills. Sent sealed securely by mail on receipt of price.

**Sherman & McConnell Drug Co**  
 1513 Dodge St. OMAHA, NEB. (Morning)