

S. P. MORSE DRY GOODS CO

Muslins and Sheetings from the Jaffray Stock on Sale Tomorrow.

SEE OUR OTHER AD ON PAGE 5

A Grand Array of New Goods at Extra Special Prices—The Pick of the Jaffray Stock on Sale at Morse's.

Tomorrow only a special sale of sheetings, muslins, etc. Fruit loom muslin 5c. Lonsdale muslin 5c. Very fine unbleached muslin 5c. Fine bleached sheeting, 2 yards wide, 13c. 2 1/2 yards wide 15c. 2 3/4 yards wide 17c. It's just giving them away at such prices, but we want you to get acquainted with this Jaffray stock, and prices are a good introduction.

JAFFRAY'S HOSIERY. Ladies' silk plaited hose, in all colors, 50c. All colors, stripes, also plain hose, 25c. Ladies' extra fine cotton black hose, 25c. 3 pairs for \$1.00. Ladies' white foot stockings 25c. Ladies' black hose 9c. Children's fine ribbed black hose 11c. Also heavy gray hose 15c; 2 pairs for 25c. Boys' bicycle hose in three grades, at 22c, two pairs 40c.

TWO HUNDRED DRESS GOODS BARGAINS. Several cases of novelty suitings have just come in from the Jaffray stock, and not knowing exactly what they are, we can't describe them nor give a price, but the ladies can rest assured they are better in price than any ever brought to Omaha. They will be on sale tomorrow.

AGRICULTURAL COMMISSION GARDEN SCHEME.

Appeal to the Benevolent Citizens of Omaha.

In response to our application to the county commissioners for money with which to purchase potatoes, seeds, etc., they in their wisdom have only seen fit to grant us a donation of four hundred bushels of seed potatoes, on condition that they are given out for free to those who received aid from the county store last winter.

We are therefore compelled on behalf of those deserving families who exhausted their means during the past winter, and who avoided applying to the county for aid, but who are now without further resources, to make this public appeal for donations of money, seed potatoes, garden seeds, implements, and the use of teams for ploughing up the land already reserved for the purpose. All checks and donations of money should be forwarded to Mayor Bemis, city hall, and the notice of other donations sent to the secretary, Agricultural Commission, city hall, who will send for them.

GEORGE P. BEMIS, President. M. A. M'GINN, Secretary. OMAHA, April 16, 1895.

Home-seekers' Excursions.

On April 23, 1895, the Union Pacific system will sell tickets from Missouri river points and stations in Kansas and Nebraska to points south and west in Nebraska and Kansas, also to Colorado, Wyoming, Utah and Idaho, east of Denver and south of Beaver Canon, at the rate of one first class fare for the round trip, plus \$2.00. Minimum rate, \$7.00.

See your nearest Union Pacific ticket agent. E. L. LOMAX, General Passenger and Ticket Agent, Omaha, Neb.

TAKING MASONS HIGHER.

Reunion of the Scottish Rite for the Southern Jurisdiction.

The Scottish Rite Masons for the southern Jurisdiction of the United States in the valley of Omaha began the first day of their reunion at Masonic hall yesterday morning, for the purpose of conferring the degree work from the fourth to the thirty-second degree.

Many guests arrived throughout the day, the larger part, however, not being in until evening. Masons are present from Iowa, South Dakota, Minnesota and Kansas, and representatives are expected from most of the other states belonging to the southern Jurisdiction before the conclusion of the exercises, which will culminate in the conferring of the thirty-second degree Friday afternoon. At a late hour last night twenty candidates for degree work had already presented themselves. Fifty altogether are expected to take the work.

The high state officials present are: Robert C. Jordan, thirty-third degree, inspector general of the state; Henry C. Akin, thirty-third degree, deputy inspector general of the state, and William Cleburne, thirty-third degree, deputy inspector general of the state.

The degree work incident to the lodge of perfection was followed throughout the day and evening, beginning with the Mount Moriah lodge at 10 o'clock, followed by the degrees of secret master, perfect master, confidential secretary and proctor, and judge. In the evening the beautiful and impressive ceremonies of the perfect U. O. or fourteenth degree were conferred. John J. Mercer, thirty-third degree, being the officer in charge for the evening.

ENTHUSIASTIC OVER PROSPECTS

State Fair Managers' Predict that the Meeting Will Be a Success.

The board of managers of the State Fair association met at the Millard this morning and after examining the revised plans of Architect Bindorf, accepted the same and paid a high compliment to that gentleman's ability.

A committee of the Manufacturers and Consumers association called and requested that a building, in which to exhibit home manufactured goods, be erected with the other structures. The request was taken under consideration, and a definite answer will be given today.

Secretary Furnas says that the plans and general arrangements for the coming state fair will exceed anything ever before given in Nebraska, and that the buildings to be erected will be the best of their class in the United States. All the members of the board are enthusiastic over the outlook.

At the afternoon session of the board a committee from the Commercial club, consisting of Messrs. Hill and Bennett, was heard with relation to arrangements for the local display. It was decided to have all the buildings erected with a view to stability. A committee from the Douglas County Fair association and other local delegations called during the afternoon and discussed plans for various exhibits.

Dread Bill School Bonanzas.

Previous action of the Board of Education in refusing to fix the boundaries of the Dread Bill school was set aside at a meeting Monday night and the boundaries were named. The line runs from the intersection of Thirty-sixth and Spruce streets east on Spruce to the Hill line tracks, thence northeast to Twenty-eighth street, south on Twenty-eighth to Pinkney, west on Pinkney to Thirty-sixth and north on Thirty-sixth to Spruce. The east boundary line of the Dread Bill school is changed from Thirty-first to Thirtieth street, and it is expected that the boundaries are now distinctly defined the principals of these schools will not be complained of as going gunning after each others' pupils.

Want to See Christofferson.

The heirs of Frederick Hansen have asked Judge Baxter's permission to allow suit to be brought against George Christofferson to recover \$400 of the estate of Henry, which it is alleged he failed to deliver up as administrator when ordered.

HAYDEN BROS.

Black Dress Goods from the E. S. Jaffray & Co. Stock.

In adding this last purchase to this immense stock we can assert without fear of contradiction that it is the largest and cheapest department in Omaha. 44-inch black wool grenadine, Jaffray's wholesale price 25c; our price 12 1/2c. 40-inch all wool German henrietta, Jaffray's wholesale price 25c; our price 25c. 40-inch all wool figured fancies; Jaffray's price 50c; our price 25c. 40-inch all wool crepon figured and plain; Jaffray's price 50c; our price 50c. 40-inch all wool German henrietta, Jaffray's price 80c; our price 50c. 60-inch imported clay worsted for capes and skirts; Jaffray's price \$1.85; our price \$1.50. 40-inch alpaca 25c; 40-inch nun's veiling 25c; 40-inch French serge 25c; Jaffray's price 37 1/2c to 60c. Any and all goods bought in this department are guaranteed both as to price and quality.

Money refunded cheerfully where goods are not as represented. GREAT PURCHASE OF DOMESTICS. From E. S. Jaffray Co. receiver's sale. 42-inch wide sheeting 7 1/2c. 45-inch wide sheeting 9c. 44-inch wide sheeting 11c. 44-inch wide sheeting 12 1/2c. 10-4 wide sheeting 15c. Cotton flannel 3 1/2c. Shirts 25c to 10c. Ticking 5c, 5c, 10c, 15c. Wonderful bargains from E. S. Jaffray's receiver sale.

lot dark ground figured satines, mostly in 25c grade; your choice at 5c. One lot 36-inch percales, wholesale price 10c; your choice of entire lot at 5c. One lot best grade outing flannel, wholesale price 10c to 15c; your choice at 5c. One lot bleached cambric and muslins; wholesale price 12 1/2c; your choice at 5c. 40-inch wide cotton at 2c worth 5c. Wonderful bargains in white goods and linens from A. S. Jaffray & Co.'s receiver sale.

Checks and plain nainsooks at 10c worth 20c. New dimities in stripes at 12 1/2c; India linens at 7 1/2c, at 10c, at 12 1/2c, at 15c; actual value 15c up to 35c. All newest patterns in Swisses at 9c, at 15c, at 25c, at 30c.

All newest patterns in table linens, towels and napkins. We name the lowest prices on silks at all times and under no circumstances will we be undersold.

Colored satin duchesse, all silk, in black, brown, myrtle gray, olive, magenta and blue, worth \$1.50; our price 75c yard. Elegant taffeta silks for skirts and waists in small designs and colorings go at 49c and 60c yard, worth double. Black crepe satines, neat and pretty small designs, this season's styles, worth \$1.25, go at 85c yard. Crepon silks, the new pleise effect in black, white and gray, worth \$1.75; you can buy them here at \$1.00 per yard.

Don't buy any silks without looking over our assortment.

HAYDEN BROS.

A Few Advantages. Offered by Chicago, Milwaukee & St. Paul Railway, the short line to Chicago. A clean train, made up and started from Omaha. Baggage checked from residence to destination. Elegant train service and courteous employees. Entire train lighted by electricity and heated by steam, with electric light in every berth. Finest dining car service in the west, with meals served "a la carte." The Flyer leaves at 6 p. m. daily from Union Depot.

City Ticket Office, 1504 Farnam street. C. S. Carrier, city ticket agent.

Impossible to Live in This Country

Without hearing of the Northwestern line's evening Chicago Limited, for people WILL talk about its convenience, tastefulness, and comprehensive up-to-date-ness. Omaha, 45 p. m.; Chicago, 8 a. m. Vestibule sleeping cars, chair cars, a la carte diners, Pintsch gas, EVERYTHING. No extra cost.

Other Northwestern trains at 11:05 a. m. and 4 p. m. daily. Want your trunk checked at home? City ticket office, 1401 Farnam street.

HOMESEEKERS EX CURSION.

Tuesday, April 23, Via Atchison, Topeka & Santa Fe R. R.

On April 23 the Santa Fe Route will sell tickets to all points in Arkansas, Texas, Oklahoma, Indian Territory, Kansas, Colorado, New Mexico, Arizona and Utah at the rate of one fare, plus \$2.00 for the round trip. Minimum selling rate, \$7. For full information, call on or address E. L. Palmer, passenger agent, Room 1, First National bank building, Omaha.

RESIGNED HIS CHARGE.

Plymouth Congregational Church Finds Itself Without a Pastor.

At a meeting of the board of trustees of the Plymouth Congregational church in Kountze Place, Rev. J. A. Fisher, the pastor, tendered his resignation, and the same was accepted, to take effect on June 1 of the present year.

On August 15, 1894, Mr. Fisher accepted the call of the church and removed from Dwight, Ill., where he had formerly resided, at once taking up his residence in this city. Plymouth church has not yet extended a call to another pastor to fill the vacancy caused by the resignation, but will do so in the course of the next few days. Mr. Fisher will remove from the city, but as yet he has not decided upon a location.

ANNOUNCEMENTS.

Today two performances of Hanlon's big spectacular pantomime, "Superba," will be given at the Grand Opera House at 2:30 this afternoon and the regular evening performance at 8. Commencing with the matinee this afternoon a sketch from one of the most interesting episodes in Du Maurier's great novel, "Trilby," will be given for the first time. The sketch will introduce several of the most prominent characters of the work, and great regard has been paid toward a faithful representation of the great artist-novelist's ideas. Miss Bella Hunt, the actress of the "Superba" company, will appear as Trilby, and will sing the ballad, "Ben Bolt." The prices of admission for the matinee have been fixed as follows: First floor, 50 and 75 cents; balcony, 25 and 50 cents. At the evening performance the prices are as usual. The engagement will close tomorrow (Thursday) evening.

The Della Fox part and curl has taken the place of the Psyche knot and the Langtry bang in the affection of the ladies of New York, and nine out of every ten ladies of fashionable attire to be seen on the Broadway and Fifth Avenue promenade wear their hair dressed in the Della Fox. This fact will cause her appearance at the Boyd on Sunday, Monday and Tuesday next to be awaited with much interest by the ladies. Colonel Whiting Allen, a most urbane southern military gentleman of the old school, is representing the Della Fox Opera company and arrived in the city yesterday.

The most wonderful of all of the great acts of the great genius Wagner is the "Parsifal." The following descriptive notice of the number—to be heard next Saturday night at the Thomas concert—will be of interest.

Prelude and Gloria, from "Parsifal." Wagner's "Parsifal" was first produced in Bayreuth on the 26th of July, 1882, and has formed the principal feature of each succeeding festival at the Wagner festival. As yet it has not been heard elsewhere, although concert performances of the music have been given in several American cities. Its subtitle, "A Dramatic Festival Stage Play," at once bespeaks its religious aim and character. Wagner's study of legendary lore covered so wide a field that he was able to work more than another influenced him in his treatment of the legend of the Holy Grail, and the story of Parsifal, the pure knight, Seeker of the Grail. "Parsifal" is an advanced as any of the dramas which preceded it, and by many is considered to be Wagner's greatest work, certainly from the standpoint of the poet.

Shiloh's Cure, the great cough and croup cure, is in great demand. Pocket size contains twenty-five doses, only 25 cents. Children love it. Sold by druggists.

IN THE DISTRICT COURT.

What Was Done by Lawyers, Judges and Jurors Yesterday.

Several additional defendants interested in the injunction suit brought by the Universal Co-operative association against the sheriff, N. R. Folsom and others, to restrain the ejectment of the association from its hotel quarters in the lower part of town, made answer. Among the number is the Byron Reed company, which acted as agent for the owners of the property rented by the hotel association. The Reed company brought ejectment proceedings because the concern did not pay rent, getting a judgment in its favor before Justice Cockrell, the enforcement of which has been restrained. One of the causes alleged by C. G. Moninger, who has been the head of the suit, in his false statements were made to him respecting the time when the justice case would be held. The Reed company denies having misled Moninger and asks to have the concern re-arrested.

Judge Blair instructed the jury in the suit between George Barker and Charles Corbett and S. R. Johnson, as to the facts of the case. The defendant's motion for a new trial was granted. The full amount asked. A claim of usury was made and a deduction of 500 of the sum sued for asked on this score. The defendant's motion for \$10,000 in July, 1889, drawing 12 1/2 per cent interest. The following November new notes and securities were taken at a low rate. The question arose whether the notes and securities did away with the usurious taint. The court held they did.

The Baptist General association has been interested in a little lawsuit against Mary E. and Edwin Overall and others for the foreclosure of a mortgage on a tract of land on which a \$1,000 mortgage rested. The church association won, for the defendants failed to defend.

John Kennedy and the Street Railway company have fixed up their controversy in consideration of \$10,000. That all Kennedy gets out of a claim for \$25,000, which he filed in the way of a suit last year, May 9, 1894, he was walking across the intersection of Leavenworth and Broadway streets and was hit by a passing motor. He did not hear the bell and claimed that it was not rung. The bruises were such that he had to have his left leg amputated.

The jury returned a verdict for \$1,108 in the suit by the Fitchburg Worsting company against C. Canan and others. Suit was instituted on a \$1,000 promissory note given in May, 1893. As a defense it was alleged that no place of payment had been written on the note, but that, without authority, there was interlined the words "payable at the Omaha National bank." This defense was held not good.

The jury responded to try the issues between William Pfeiffer and Frank S. Moore found for the plaintiff and assessed his damages at 5 cents for the detention of a buggy worth \$250, and the terms of which was the object of Pfeiffer's suit.

G. E. Shukert, an expert furrier and one of the leading witnesses in the arson case against McCabe and Schultz, has been talking of going to Europe. To prevent this the state is making an effort to induce Shukert to give bonds for his appearance at the trial. Shukert examined McCabe and Schultz store to find burnt furs after the fire.

The Globe Loan and Trust company is trying to foreclose a mortgage on a sand pit at South Omaha, owned by E. J. May, Mary Lane. The defendants claim it was the agreement that the mortgage need not be paid unless the sand pit on the lot yielded a sufficient amount of earnings to raise the mortgage. Building it is alleged has been poor and the demand for sand so small that the Ladies ask to have the suit again dismissed until the sand business picks up.

Abraham Sillmer and Thomas Martin have been sued by Perry Bros. & Co., a commission firm, because they drew an overdraft of \$62, which they now refuse to pay. The defendants for three consecutive years shipped the commission firm fat stock and all went well until the overdraft was drawn.

WILL LOCATE THE MINERAL.

Object of a Commission Just Appointed by the General Land Office.

Hon. A. A. Crane of Harrison, Idaho, passed through the city yesterday en route home. While in Omaha Mr. Crane received notice of his appointment by the president as a member of the commission selected to segregate the mineral lands lying within the land grant to the Northern Pacific railroad of the district in which the mineral land is located the segregation is complete, subject to the right of appeal by any party interested. This act of congress will doubtless result in one more great lawsuit brought to determine what is mineral land within the meaning of the act, and then the work will soon be over. Many of the great mines of northern Idaho were found to be located on odd sections, while the grant cut a wide swath through the mineral belt of Montana. No legislation could have been of more value to the people of the two states mentioned. Mr. Crane is a skillful assayer, quite familiar with the character of minerals in the northwest, and is in all respects well qualified to protect the miners and prospectors of his state, while at the same time doing justice to the company.

MARRIAGE LICENSES.

The following marriage licenses were issued by the county clerk yesterday:

Name and Address. Age. Edith Bolding, Omaha, 22. Edith Parker, Omaha, 18. Lillian Van Arman, South Omaha, 42. Henry R. Wagner, Albany, 25. Richard L. Wagner, Omaha, 25. Jennie Booth, Omaha, 21.

EXCURSION.

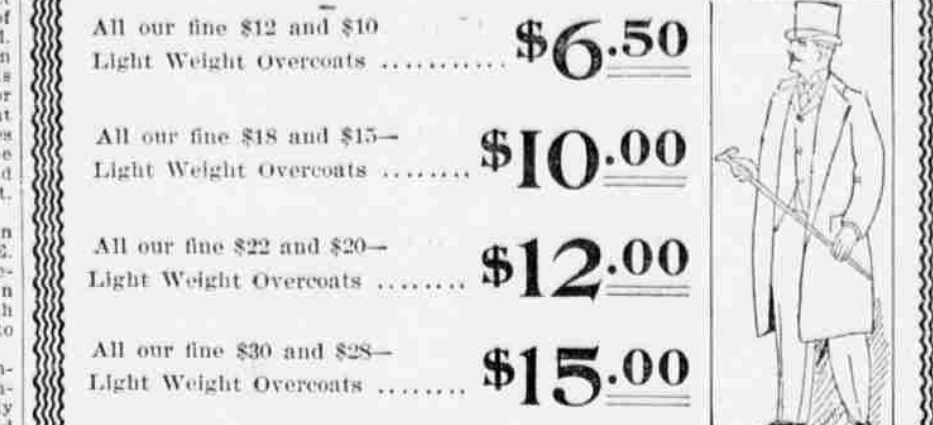
Via the Missouri Pacific Railway.

On April 23rd. Round trip tickets at one fare (plus \$2.00) to all points in Texas, Arkansas, Oklahoma and Indian Territories, etc. Call or write for further information to agent at depot, 15th and Webster streets, or city office, N. E. corner 13th and Farnam streets, Omaha, Neb. J. A. PHILLIPPI, A. G. P. & F. A. THOS. F. GODFREY, P. & T. A.

CONTINENTAL CLOTHING HOUSE.

We have too many Light Weight Overcoats. We are going to unload—and to do so we assume the biggest loss we have made since the Continental opened.

All our fine \$12 and \$10 Light Weight Overcoats ..... \$6.50. All our fine \$18 and \$15—Light Weight Overcoats ..... \$10.00. All our fine \$22 and \$20—Light Weight Overcoats ..... \$12.00. All our fine \$30 and \$28—Light Weight Overcoats ..... \$15.00.



Sale Begins Thursday Morning

Over 1,000 of this seasons' garments in the lot—Not a coat reserved.

Vicunas, Worsteds, Silk Mixtures, Chevots.

The best overcoat opportunity you've ever had—the grandest bargains we ever gave.

\$6.50 \$10.00 \$12.00 \$15.00. BEGINS THURSDAY.

CONTINENTAL CLOTHING HOUSE.

WILL LOCATE THE MINERAL. HAS GARDEN SEEDS GALORE.

Object of a Commission Just Appointed by the General Land Office.

Hon. A. A. Crane of Harrison, Idaho, passed through the city yesterday en route home. While in Omaha Mr. Crane received notice of his appointment by the president as a member of the commission selected to segregate the mineral lands lying within the land grant to the Northern Pacific railroad of the district in which the mineral land is located the segregation is complete, subject to the right of appeal by any party interested. This act of congress will doubtless result in one more great lawsuit brought to determine what is mineral land within the meaning of the act, and then the work will soon be over. Many of the great mines of northern Idaho were found to be located on odd sections, while the grant cut a wide swath through the mineral belt of Montana. No legislation could have been of more value to the people of the two states mentioned. Mr. Crane is a skillful assayer, quite familiar with the character of minerals in the northwest, and is in all respects well qualified to protect the miners and prospectors of his state, while at the same time doing justice to the company.

Notwithstanding the negative answer received from Washington Monday by John B. Furry and others interested in the Omaha garden plot plan, Major Furry thought of another scheme which might bring enough seeds to the Agricultural commission of the metropolis and aid materially in the plan, as promulgated by the commission in tilling the waste spots of the city and planting them with garden seeds. He sent to Secretary Ludden a copy of the negative answer received from the Department of Agriculture with the inquiry of the relief commission what could be done to aid the Omaha plan.

At noon Mayor Bemis received the following telegram from Lincoln: "At the suggestion of Major Furry I will mail you today six sacks of garden seeds for your Omaha garden spot plan. Seeds leave here on No. 2 Burlington, and should reach the Omaha postoffice at 4:30 today. In this lot will be enough seeds for 1,000 families." The telegram was signed by Luther P. Ludden, secretary of the Nebraska Relief commission. Word reaches this office from the mayor that the seeds will be distributed from the rooms of the Omaha association, commencing this morning. The association at its meeting decided not to ask the State Relief association for help, upon the theory that it had enough to do to take care of the poor of the state, but these seeds, coming as they do, will be thankfully accepted by the Omaha movers in the garden spot plan.

Important Change in Time. "Great Rock Island Route" to Chicago, Peoria and all points east; Atlantic Express leaves 11 a. m.; Vestibule Limited, 4:30 p. m.; Night Express, 6:25 p. m. To Lincoln, Fairbury, Belleville, Denver, Colorado Springs, Pueblo and all points west; Vestibule Limited leaves at 1:40 p. m.; Texas Express, via Lincoln and Belleville, leaves at 6 p. m. Ticket office, 1602 Farnam street.

Reserved seats for Theodore Thomas' concert now on sale at Adolph Myers' music store, 15th and Farnam.

Reserved seats for Theodore Thomas' concert now on sale at Adolph Myers' music store, 15th and Farnam.

Reserved seats for Theodore Thomas' concert now on sale at Adolph Myers' music store, 15th and Farnam.

Reserved seats for Theodore Thomas' concert now on sale at Adolph Myers' music store, 15th and Farnam.

Reserved seats for Theodore Thomas' concert now on sale at Adolph Myers' music store, 15th and Farnam.

Reserved seats for Theodore Thomas' concert now on sale at Adolph Myers' music store, 15th and Farnam.

Reserved seats for Theodore Thomas' concert now on sale at Adolph Myers' music store, 15th and Farnam.

Reserved seats for Theodore Thomas' concert now on sale at Adolph Myers' music store, 15th and Farnam.

Reserved seats for Theodore Thomas' concert now on sale at Adolph Myers' music store, 15th and Farnam.

Reserved seats for Theodore Thomas' concert now on sale at Adolph Myers' music store, 15th and Farnam.

Reserved seats for Theodore Thomas' concert now on sale at Adolph Myers' music store, 15th and Farnam.

Reserved seats for Theodore Thomas' concert now on sale at Adolph Myers' music store, 15th and Farnam.

Reserved seats for Theodore Thomas' concert now on sale at Adolph Myers' music store, 15th and Farnam.

Reserved seats for Theodore Thomas' concert now on sale at Adolph Myers' music store, 15th and Farnam.

Reserved seats for Theodore Thomas' concert now on sale at Adolph Myers' music store, 15th and Farnam.

Reserved seats for Theodore Thomas' concert now on sale at Adolph Myers' music store, 15th and Farnam.

A Generous Contract.

As we remarked often—"A new pair of shoes gratis or your money back"—if our shoes don't render absolute satisfaction. No shoe dealer enters upon such a generous contract, but why do we?

Simply because we have absolute confidence in the shoe we sell. An "all leather" shoe carefully stretched is bound to wear and out wear natural, and the natural wear of leather—good stock—is all any reasonable person could expect.

Imitation sole leather—compressed paper—cannot be guaranteed. If we would deal in such, we couldn't handle enough shoes to satisfy all complaints.

Yet we sell pure leather shoes cheaper than the average shoe. A substantial working shoe for \$1.15. A full stock dress shoe for \$1.05. A splendid calf shoe for \$2.00.

The best American calf Goodyear welt, a shoe of that calibre retails everywhere at from \$3.50 to \$4.00—our price \$2.50. Not a last, width, toe or style known to the modern market but what you are sure to find here.

New shades and shapes in tan shoes.

Nebraska Clothing Co.

Postal Card us for a Spring '95 Catalogue. It'll reach you postpaid.

Postal Card us for a Spring '95 Catalogue. It'll reach you postpaid.

Postal Card us for a Spring '95 Catalogue. It'll reach you postpaid.

Disorder.

That is the state of your stomach. You know it, you feel it, you show it. The remedy you need is Ripans Tabules. Safe Sure and Effective.

Ripans Tabules: Sold by druggists, or by mail at 10c a box to the Ripans Chemical Company, No. 19 Spruce st., N. Y.

Ripans Tabules: Sold by druggists, or by mail at 10c a box to the Ripans Chemical Company, No. 19 Spruce st., N. Y.

Ripans Tabules: Sold by druggists, or by mail at 10c a box to the Ripans Chemical Company, No. 19 Spruce st., N. Y.

Ripans Tabules: Sold by druggists, or by mail at 10c a box to the Ripans Chemical Company, No. 19 Spruce st., N. Y.

Ripans Tabules: Sold by druggists, or by mail at 10c a box to the Ripans Chemical Company, No. 19 Spruce st., N. Y.

Ripans Tabules: Sold by druggists, or by mail at 10c a box to the Ripans Chemical Company, No. 19 Spruce st., N. Y.

Ripans Tabules: Sold by druggists, or by mail at 10c a box to the Ripans Chemical Company, No. 19 Spruce st., N. Y.

Ripans Tabules: Sold by druggists, or by mail at 10c a box to the Ripans Chemical Company, No. 19 Spruce st., N. Y.

Ripans Tabules: Sold by druggists, or by mail at 10c a box to the Ripans Chemical Company, No. 19 Spruce st., N. Y.

Ripans Tabules: Sold by druggists, or by mail at 10c a box to the Ripans Chemical Company, No. 19 Spruce st., N. Y.

Ripans Tabules: Sold by druggists, or by mail at 10c a box to the Ripans Chemical Company, No. 19 Spruce st., N. Y.

Ripans Tabules: Sold by druggists, or by mail at 10c a box to the Ripans Chemical Company, No. 19 Spruce st., N. Y.

Ripans Tabules: Sold by druggists, or by mail at 10c a box to the Ripans Chemical Company, No. 19 Spruce st., N. Y.

Ripans Tabules: Sold by druggists, or by mail at 10c a box to the Ripans Chemical Company, No. 19 Spruce st., N. Y.

Ripans Tabules: Sold by druggists, or by mail at 10c a box to the Ripans Chemical Company, No. 19 Spruce st., N. Y.

Ripans Tabules: Sold by druggists, or by mail at 10c a box to the Ripans Chemical Company, No. 19 Spruce st., N. Y.

Ripans Tabules: Sold by druggists, or by mail at 10c a box to the Ripans Chemical Company, No. 19 Spruce st., N. Y.

Ripans Tabules: Sold by druggists, or by mail at 10c a box to the Ripans Chemical Company, No. 19 Spruce st., N. Y.

Ripans Tabules: Sold by druggists, or by mail at 10c a box to the Ripans Chemical Company, No. 19 Spruce st., N. Y.

Ripans Tabules: Sold by druggists, or by mail at 10c a box to the Ripans Chemical Company, No. 19 Spruce st., N. Y.

Ripans Tabules: Sold by druggists, or by mail at 10c a box to the Ripans Chemical Company, No. 19 Spruce st., N. Y.