

# HIGHLAND PARK

## COLUMBUS, NEBRASKA.

Will be Placed on Sale Tuesday, May 27th, 1890.

This beautiful addition is situated five blocks from the business center of

**COLUMBUS, NEBRASKA.**

Electric Lights.

Street Cars,

City Water

And all the conveniences that can be had in a city of 100,000 population, and is owned by the

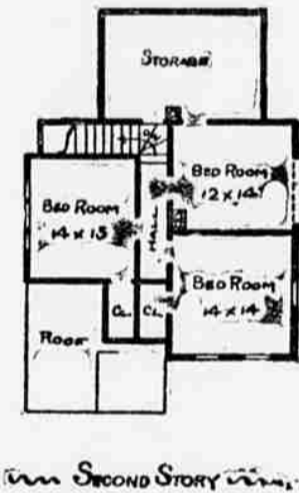
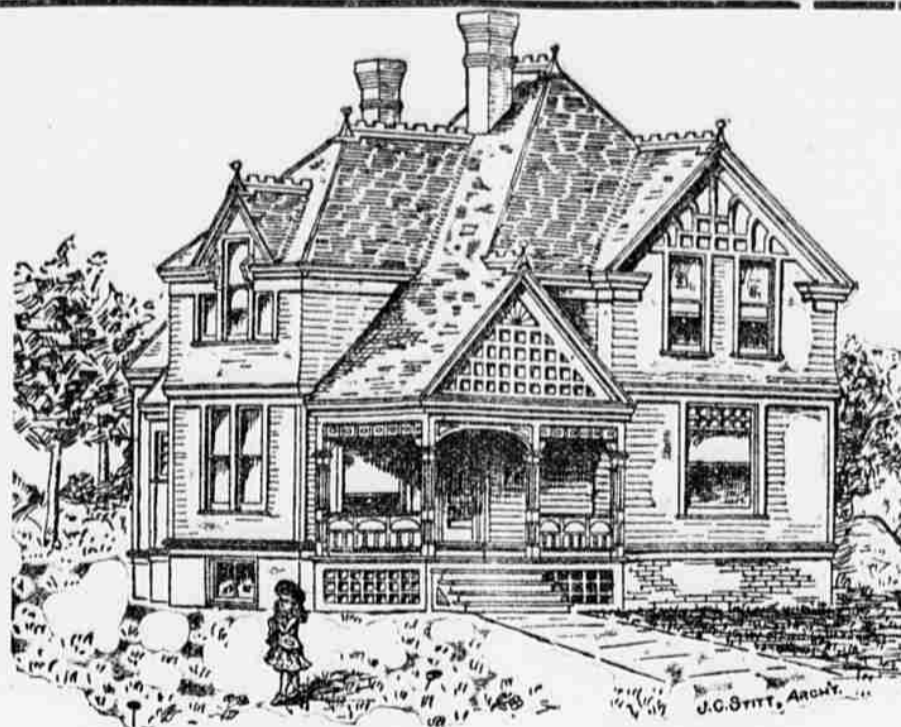
**Columbus Land and Investment Company**

Recently organized.

**CAPITAL, \$100,000**

and will be placed on the market for the first time

**Tuesday, May 27th, 1889.**



Each Purchaser of a Lot in

**HIGHLAND PARK,**

of the first 100 sold, will receive a ticket entitling him or her to a chance to become the owner of this

**Fine Modern Residence,**  
Costing \$2,000.

This cut is an exact duplicate of the architectural drawings, and the building is now in course of erection on

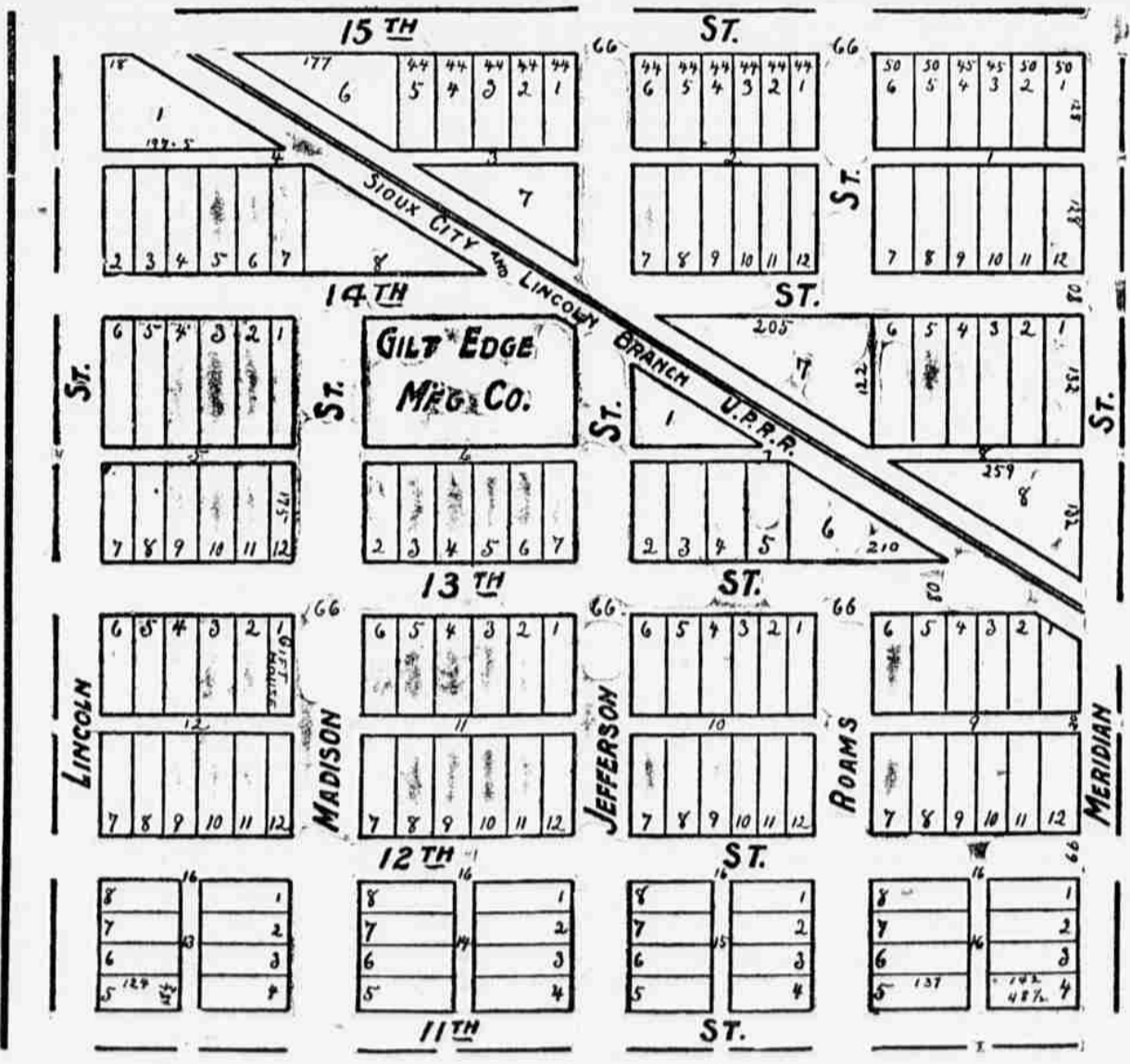
LOT 1, BLOCK 12,

**Highland Park,**  
COLUMBUS, NEB.

There will be a great rush for these lots, as they are centrally located, and actually worth double what the company starts them at. This is Not an Outside addition, but nearer the business center than a large portion of the city which is already built up.

### PRICES:

Block	Lot	Price	Block	Lot	Price
1	1	225	9	1, 2, 3	100
1	2, 3, 4, 5, 6	175	9	4	150
2	1	250	9	5	175
2	2	250	9	6	200
2	3, 4, 5, 6, 7, 8, 9, 10, 11	200	9	7	75
3	1	175	9	8, 9, 10, 11, 12	60
3	2	150	10	1	175
3	3	150	10	2	150
3	4	150	10	3	150
3	5	150	10	4	90
3	6	100	10	5	75
3	7	60	10	6	175
3	8	125	10	7	150
3	9	125	10	8	75
3	10	125	10	9	150
3	11	125	10	10	150
3	12	125	10	11	60
3	13	125	10	12	60
3	14	125	10	13	60
3	15	125	10	14	60
3	16	125	10	15	60
3	17	125	10	16	60
3	18	125	10	17	60
3	19	125	10	18	60
3	20	125	10	19	60
3	21	125	10	20	60
3	22	125	10	21	60
3	23	125	10	22	60
3	24	125	10	23	60
3	25	125	10	24	60
3	26	125	10	25	60
3	27	125	10	26	60
3	28	125	10	27	60
3	29	125	10	28	60
3	30	125	10	29	60
3	31	125	10	30	60
3	32	125	10	31	60
3	33	125	10	32	60
3	34	125	10	33	60
3	35	125	10	34	60
3	36	125	10	35	60
3	37	125	10	36	60
3	38	125	10	37	60
3	39	125	10	38	60
3	40	125	10	39	60
3	41	125	10	40	60
3	42	125	10	41	60
3	43	125	10	42	60
3	44	125	10	43	60
3	45	125	10	44	60
3	46	125	10	45	60
3	47	125	10	46	60
3	48	125	10	47	60
3	49	125	10	48	60
3	50	125	10	49	60
3	51	125	10	50	60
3	52	125	10	51	60
3	53	125	10	52	60
3	54	125	10	53	60
3	55	125	10	54	60
3	56	125	10	55	60
3	57	125	10	56	60
3	58	125	10	57	60
3	59	125	10	58	60
3	60	125	10	59	60
3	61	125	10	60	60



### TERMS:

All lots under \$125, one-half cash, balance 3, 6, 9 and 12 months.  
 All lots priced at \$125 and upwards, one-third cash, balance 3, 6, 9 and 12 months; or choice will be given on deferred payments.  
 All lots under \$125 monthly payments of \$5.  
 All lots of \$125 and upwards monthly payments of \$10.  
 A discount for all cash for any lot of 5 per cent will be allowed.  
 Any one purchasing ten lots will be allowed a discount of 5 per cent.  
 All deferred payments bear 8 per cent interest.

**FREE EXCURSION TRAIN:**  
 To Columbus and Return, Tuesday, May 27.

For Full Particulars, enquire MONDAY, May 26th, at Union Pacific Ticket Office, 1302 Farnam Street. Omaha, Nebraska. Train will leave at 9 a.m.

**COLUMBUS LAND AND INVESTMENT COMPANY**  
 LEANDER GERRARD, President. GEO. P. MOORE, Sec. and Manager.  
 OFFICE, 602 Twelfth Street, Fleming Block, - - COLUMBUS, NEBRASKA