

THE OMAHA BEE

1890

ANNUAL REVIEW



HIGH SCHOOL.



THE NEW YORK LIFE INSURANCE COMPANY BUILDING.
ERECTED 1889.



1ST METHODIST CHURCH.
ERECTED 1889.



COMMERCIAL NATIONAL BANK.
ERECTED 1889.



Y. M. C. A. BUILDING.
ERECTED 1889.



J. J. BROWN BLOCK.
ERECTED 1889.



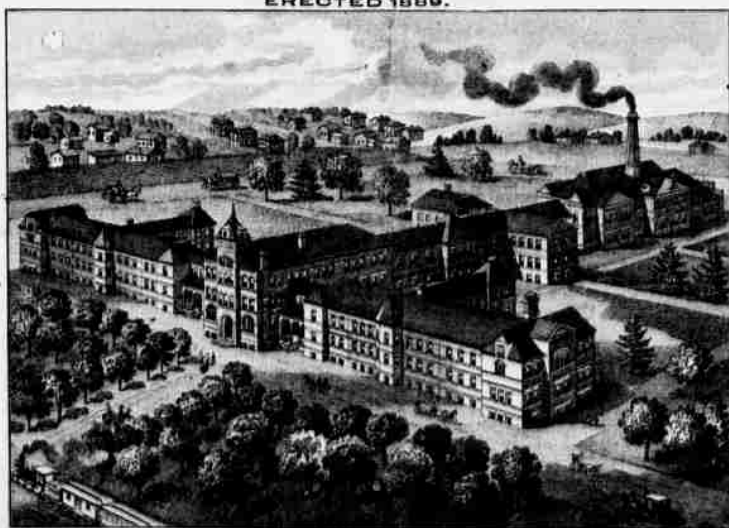
THE BEE BUILDING.
ERECTED 1889.



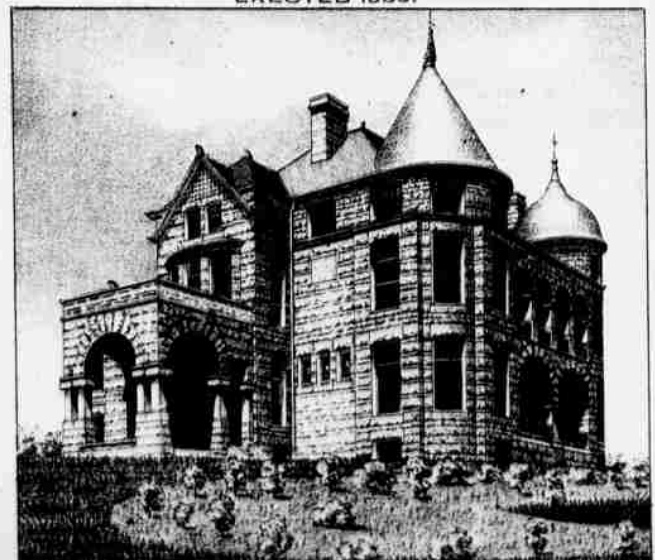
PACIFIC EXPRESS BUILDING.
ERECTED 1889.



O. M. CARTER'S RESIDENCE.



DOUGLAS COUNTY HOOPERY.



DOUGLAS COUNTY HOOPERY.