

THE CITY'S FIRES.

IN THE FEMINE DOMAIN.

A Remarkable Decrease in the Amount of Fires.

Facts and Figures of Interest to the Fair Sex.

The Efficiency of the Fire Department—The Elevator Fire at St. Anthony's Park—The Union Elevators.

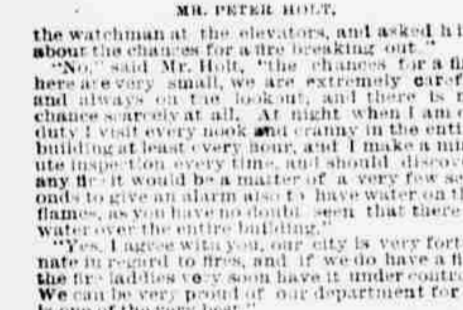
Her Rejection—A Fashionable Craze—Another New "Fad"—Halloween—Women as Telegraphers and Their Wages.

Do you know that our city is very fortunate in the matter of fire extinguishers? ... We have not had a real fire here for a very long time.

As we played at wily poker ... "Telling" phrases sought to find ... "Jack, I do not want to pair."



Fashionable Dress Tints. October Table Talk: The same tones that the fall styles usually reflect, as it were, from the autumn sky, are late this year in casting their shadows.



A Fashionable Craze. October Table Talk: There is a fashionable craze for writing—professionally, but it added—and the craze is all the more important and wide-spread because it is sanctioned and followed by royal personages across seas.

How Cataract is Produced. Although taking cold is one of the commonest and most familiar of phenomena, yet the danger of its effects is not generally appreciated.

Another New "Fad." October Table Talk: It is quite a "fad" to stroll in the park or abroad, whenever the opportunity offers, with a volume of some description clasped in the hands.

Women as Telegraphers. Globe-Democrat: There isn't a busier spot in all New York than the operating room of the Western Union Telegraph company.

Could Afford to Wear Any Kind. Chicago Tribune: "The young man who accompanied you to church last evening, Laura," said Miss Garrison.

CATARRH CURED. Consultation at office or by mail. Office hours 9 a. m. to 4 p. m. Sunday hours, from 9 a. m. to 1 p. m.

Penmanently Located. Dr. A. Cepanec, late of Bellevue Hospital, New York, succeeds by Dr. Charles M. Jordan, late of the University of New York City.

Robinson & Garmon. Our customers will take notice that notwithstanding the confusion incident to the improvements being made in our place of business, we are in continual receipt of new goods.

Robinson & Garmon. "Quite likely, Irene," replied Miss Kinross, with some hesitation.

Robinson & Garmon. "Quite likely, Irene," replied Miss Kinross, with some hesitation.

Robinson & Garmon. "Quite likely, Irene," replied Miss Kinross, with some hesitation.

ALONG THE ALASKAN COAST.

A Possession of Great Extent and Possibilities.

AN INTERESTING SEA VOYAGE.

A Trip Along the Mountainous Coasts and Through the Calm Waters of the North-west.

Alaska.

Chicago Times: A regular line of transients plies between Portland, Ore., and the mining and fishing stations in the territory, making bi-monthly trips.

The lofty Olympian range of mountains seems to begin in Washington Territory, extends across the coast of British Columbia, constantly in sight from the deck of the ship.

After passing Charlotte's and Milbank's, the vessel entered the narrow channel of the Gulf of Alaska.

In the Fall. In the fall, a glossier cluster comes upon the summer suit; russet shades and shirts of flannel fade away.

Over and Over Schoepliy. For gentlemen, we have a large line of new styles in suits, ranging from the latest in the line.

Improvements. Our customers will take notice that notwithstanding the confusion incident to the improvements being made in our place of business, we are in continual receipt of new goods.

Robinson & Garmon. "Quite likely, Irene," replied Miss Kinross, with some hesitation.

ALONG THE ALASKAN COAST.

A Possession of Great Extent and Possibilities.

AN INTERESTING SEA VOYAGE.

A Trip Along the Mountainous Coasts and Through the Calm Waters of the North-west.

Alaska.

Chicago Times: A regular line of transients plies between Portland, Ore., and the mining and fishing stations in the territory, making bi-monthly trips.

The lofty Olympian range of mountains seems to begin in Washington Territory, extends across the coast of British Columbia, constantly in sight from the deck of the ship.

After passing Charlotte's and Milbank's, the vessel entered the narrow channel of the Gulf of Alaska.

In the Fall. In the fall, a glossier cluster comes upon the summer suit; russet shades and shirts of flannel fade away.

Over and Over Schoepliy. For gentlemen, we have a large line of new styles in suits, ranging from the latest in the line.

Improvements. Our customers will take notice that notwithstanding the confusion incident to the improvements being made in our place of business, we are in continual receipt of new goods.

Robinson & Garmon. "Quite likely, Irene," replied Miss Kinross, with some hesitation.

ALONG THE ALASKAN COAST.

A Possession of Great Extent and Possibilities.

AN INTERESTING SEA VOYAGE.

A Trip Along the Mountainous Coasts and Through the Calm Waters of the North-west.

Alaska.

Chicago Times: A regular line of transients plies between Portland, Ore., and the mining and fishing stations in the territory, making bi-monthly trips.

The lofty Olympian range of mountains seems to begin in Washington Territory, extends across the coast of British Columbia, constantly in sight from the deck of the ship.

After passing Charlotte's and Milbank's, the vessel entered the narrow channel of the Gulf of Alaska.

In the Fall. In the fall, a glossier cluster comes upon the summer suit; russet shades and shirts of flannel fade away.

Over and Over Schoepliy. For gentlemen, we have a large line of new styles in suits, ranging from the latest in the line.

Improvements. Our customers will take notice that notwithstanding the confusion incident to the improvements being made in our place of business, we are in continual receipt of new goods.

Robinson & Garmon. "Quite likely, Irene," replied Miss Kinross, with some hesitation.

ALONG THE ALASKAN COAST.

A Possession of Great Extent and Possibilities.

AN INTERESTING SEA VOYAGE.

A Trip Along the Mountainous Coasts and Through the Calm Waters of the North-west.

Alaska.

Chicago Times: A regular line of transients plies between Portland, Ore., and the mining and fishing stations in the territory, making bi-monthly trips.

The lofty Olympian range of mountains seems to begin in Washington Territory, extends across the coast of British Columbia, constantly in sight from the deck of the ship.

After passing Charlotte's and Milbank's, the vessel entered the narrow channel of the Gulf of Alaska.

In the Fall. In the fall, a glossier cluster comes upon the summer suit; russet shades and shirts of flannel fade away.

Over and Over Schoepliy. For gentlemen, we have a large line of new styles in suits, ranging from the latest in the line.

Improvements. Our customers will take notice that notwithstanding the confusion incident to the improvements being made in our place of business, we are in continual receipt of new goods.

Robinson & Garmon. "Quite likely, Irene," replied Miss Kinross, with some hesitation.

ALONG THE ALASKAN COAST.

A Possession of Great Extent and Possibilities.

AN INTERESTING SEA VOYAGE.

A Trip Along the Mountainous Coasts and Through the Calm Waters of the North-west.

Alaska.

Chicago Times: A regular line of transients plies between Portland, Ore., and the mining and fishing stations in the territory, making bi-monthly trips.

The lofty Olympian range of mountains seems to begin in Washington Territory, extends across the coast of British Columbia, constantly in sight from the deck of the ship.

After passing Charlotte's and Milbank's, the vessel entered the narrow channel of the Gulf of Alaska.

In the Fall. In the fall, a glossier cluster comes upon the summer suit; russet shades and shirts of flannel fade away.

Over and Over Schoepliy. For gentlemen, we have a large line of new styles in suits, ranging from the latest in the line.

Improvements. Our customers will take notice that notwithstanding the confusion incident to the improvements being made in our place of business, we are in continual receipt of new goods.

Robinson & Garmon. "Quite likely, Irene," replied Miss Kinross, with some hesitation.



ONE OF A SERIES OF PICTURES REPRESENTING COFFEE CULTURE. WATCH FOR THE NEXT. CHASE & SANBORN. OUR COFFEES HAVE A NATIONAL REPUTATION REPRESENTING THE FINEST GROW.

W. G. ALBRIGHT, Real Estate, 218 S. 15th St., Omaha. BEST AND CHEAPEST ALBRIGHT'S CHOICE! SOUTH OMAHA. BUY NOW TERMS EASY.

GOOD SHOES CHEAP At Over & Schoepliy's, 1115 Douglas Street.



OUR \$3.00 SHOE.

Who is WEAK, NERVOUS, DEBILITATED, who is PALE, who is SICK, who is UNWELL, who is OVERHEATED, who is OVERWORKED, who is OVERSTRESSED, who is OVEREXHAUSTED, who is OVERWORN, who is OVERBURDENED, who is OVERSTIMULATED, who is OVERHEATED, who is OVERWORKED, who is OVERSTRESSED, who is OVEREXHAUSTED, who is OVERWORN, who is OVERBURDENED, who is OVERSTIMULATED.

\$1.50 For Ladies' Bright Donzola or Pebble Goat Shoes that will give excellent wear.



\$2.00 For Ladies' Bright Donzola Pebble Goat Shoes, in common sense and perfect style.

OMAHA MEDICAL & SURGICAL INSTITUTE. N. W. Cor. 13th & Dodge Sts.

\$2.50 For Ladies' Donzola Kid, extra quality, flexible soles, and equal to any so-called "advertiser" \$3.00 shoes.

Chronic and Surgical Diseases. APPLIANCES FOR BURNING AND TRUSSSES. Best facilities, apparatus and remedies for successful treatment of every form of disease requiring Medical or Surgical Treatment.

\$3.00 For Ladies' Hand Turned, extra fine Kid shoe, far superior to anything ever sold for the same money.

PRIVATE DISEASES. All Blood Diseases successfully treated. Syphilis, Gonorrhea, etc.

\$4.00 For Ladies' Hand Turned Shoes with light or heavy flexible soles, in all styles of lasts, and in all widths.

BANK OF OMAHA. Capital, - - - \$100,000. 601 South Thirteenth Street.

\$5.00 In this price show we can show our goods at a great discount. Our \$5.00 Full French Kid, Hand Turned, and our Kangaroo Kid and sewed shoes.

For the benefit of depositors the Savings Dept. will be open on Saturday nights from 8 to 9 o'clock.