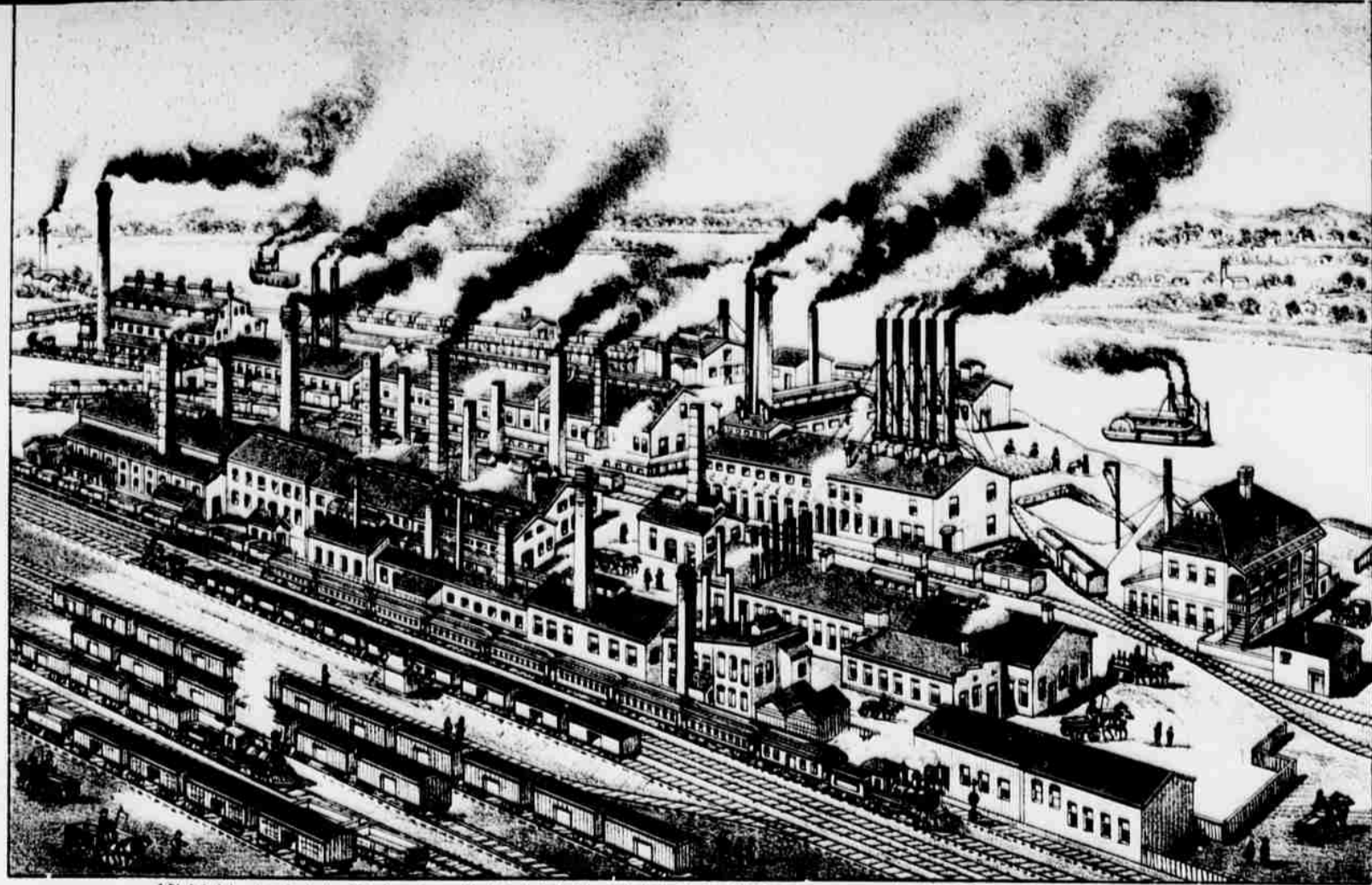
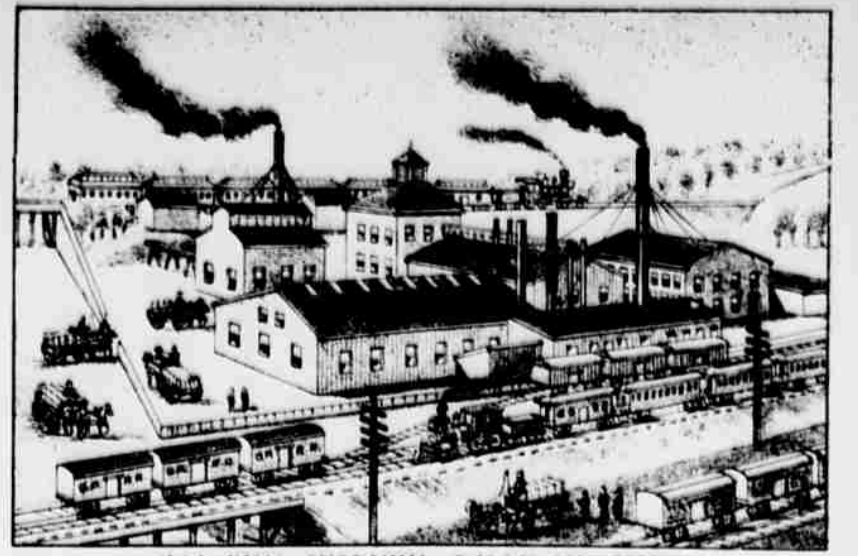


THE EXPOSITION BUILDING.  
ERECTED 1886



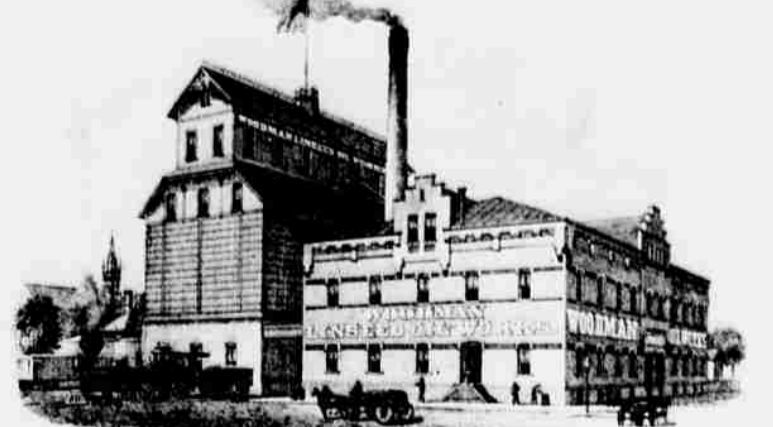
THE OMAHA & GREAT SOUTHERN RAILROAD WORKS.  
ENLARGED 1887



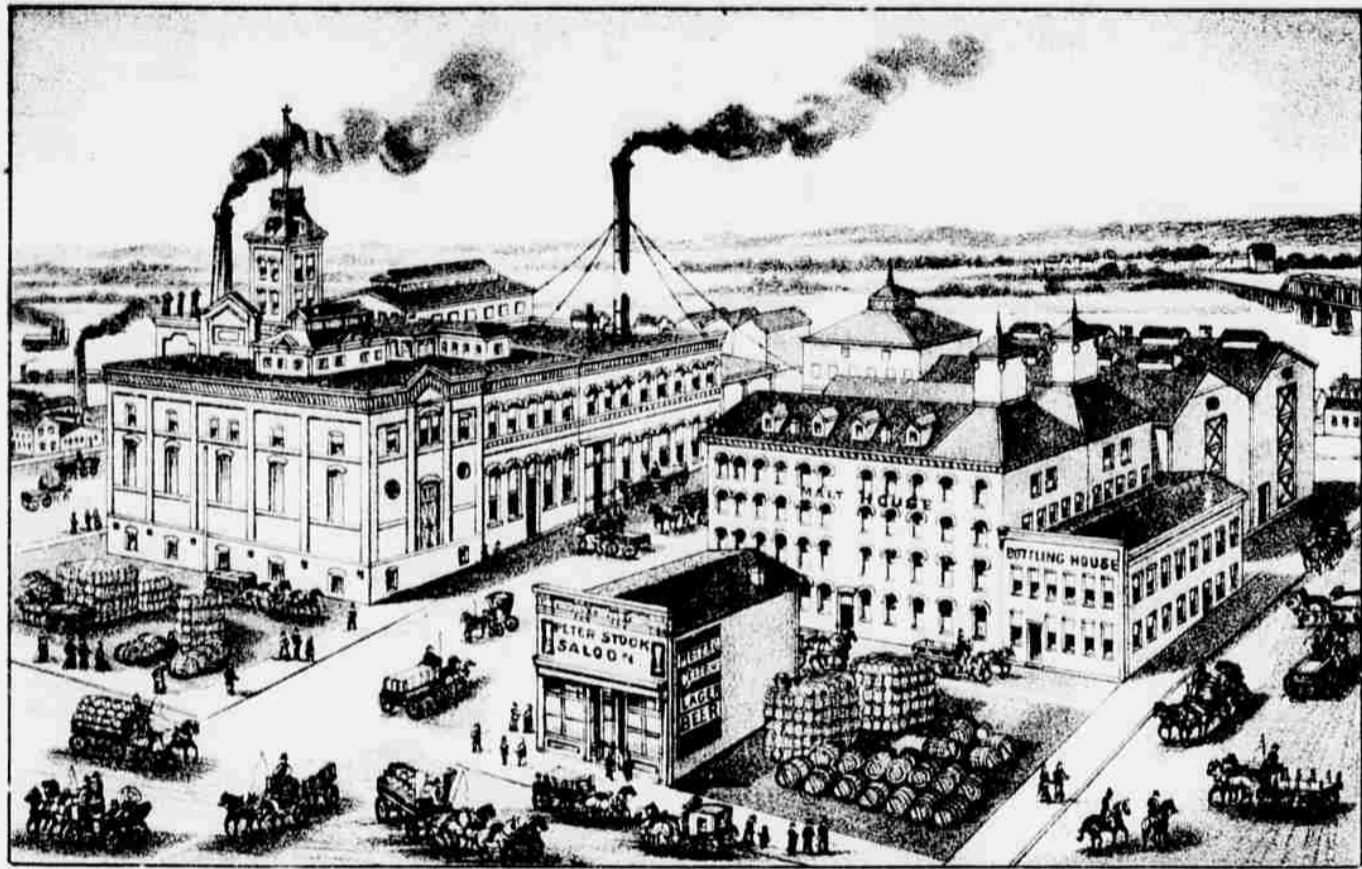
CARTER WHITE LEAD WORKS.



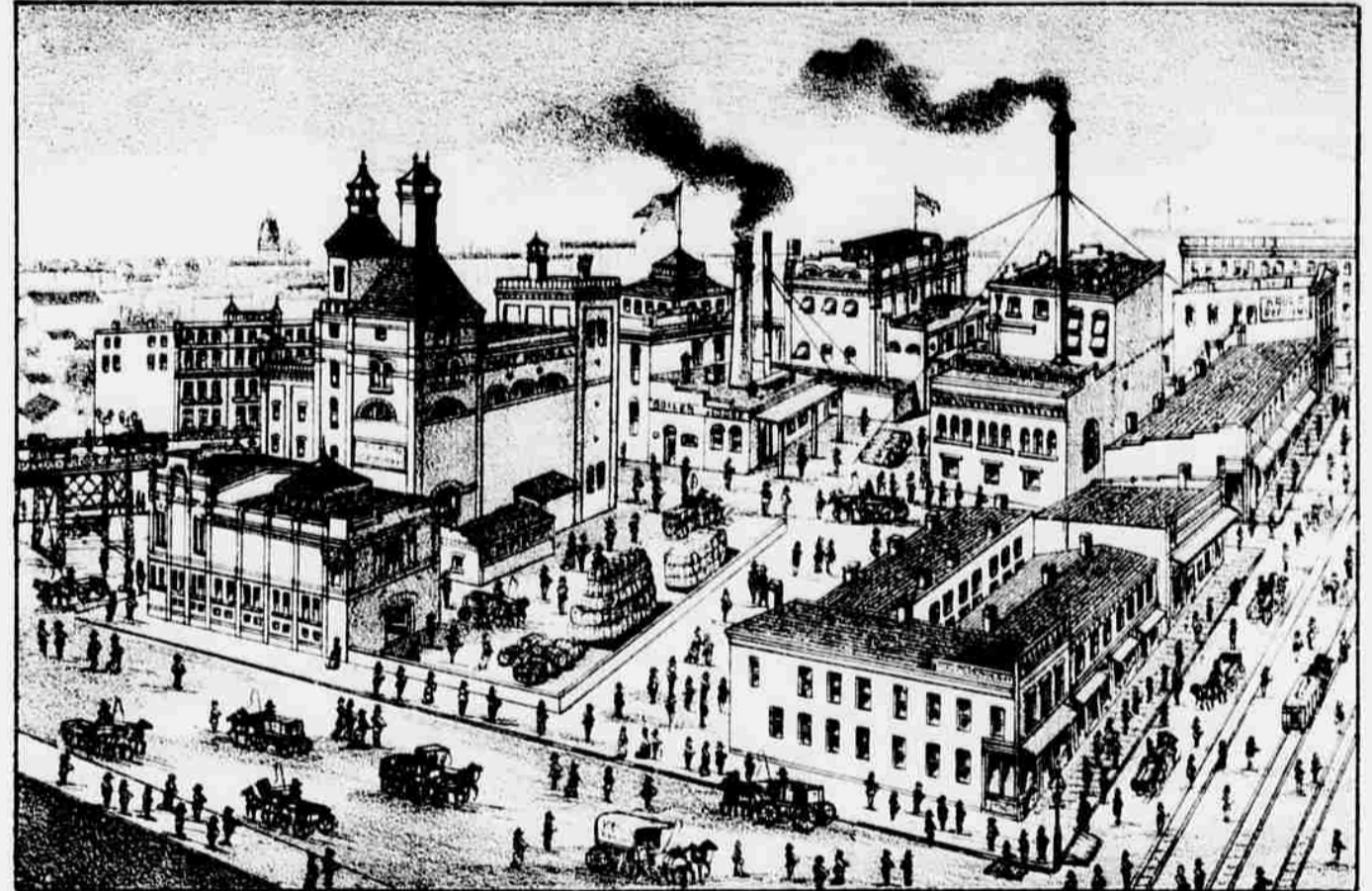
THE GARNEAU CRACKER FACTORY.



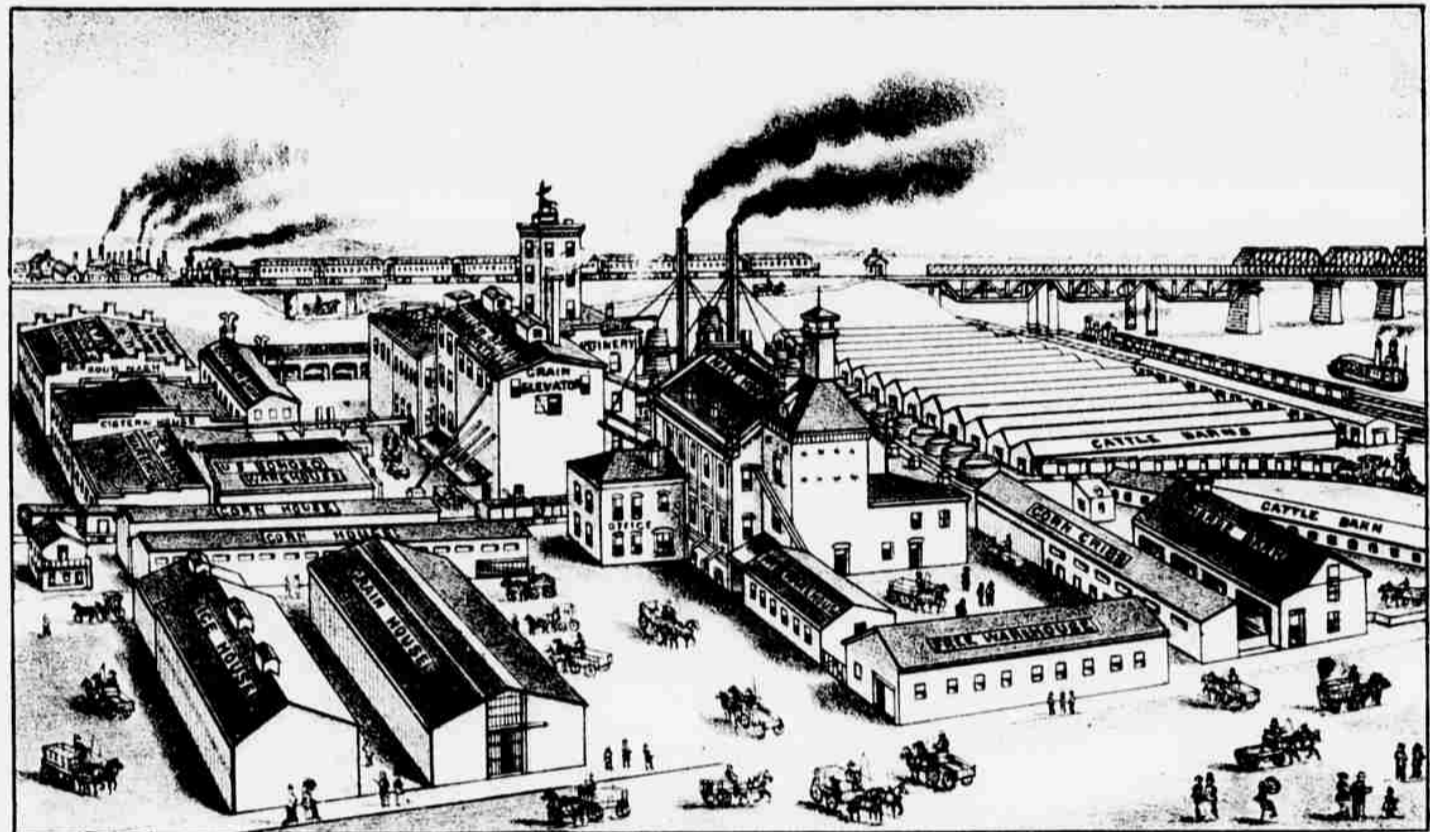
THE WOODMAN LINSEED OIL WORKS



METZ BROTHERS BREWERY.  
ENLARGED 1887



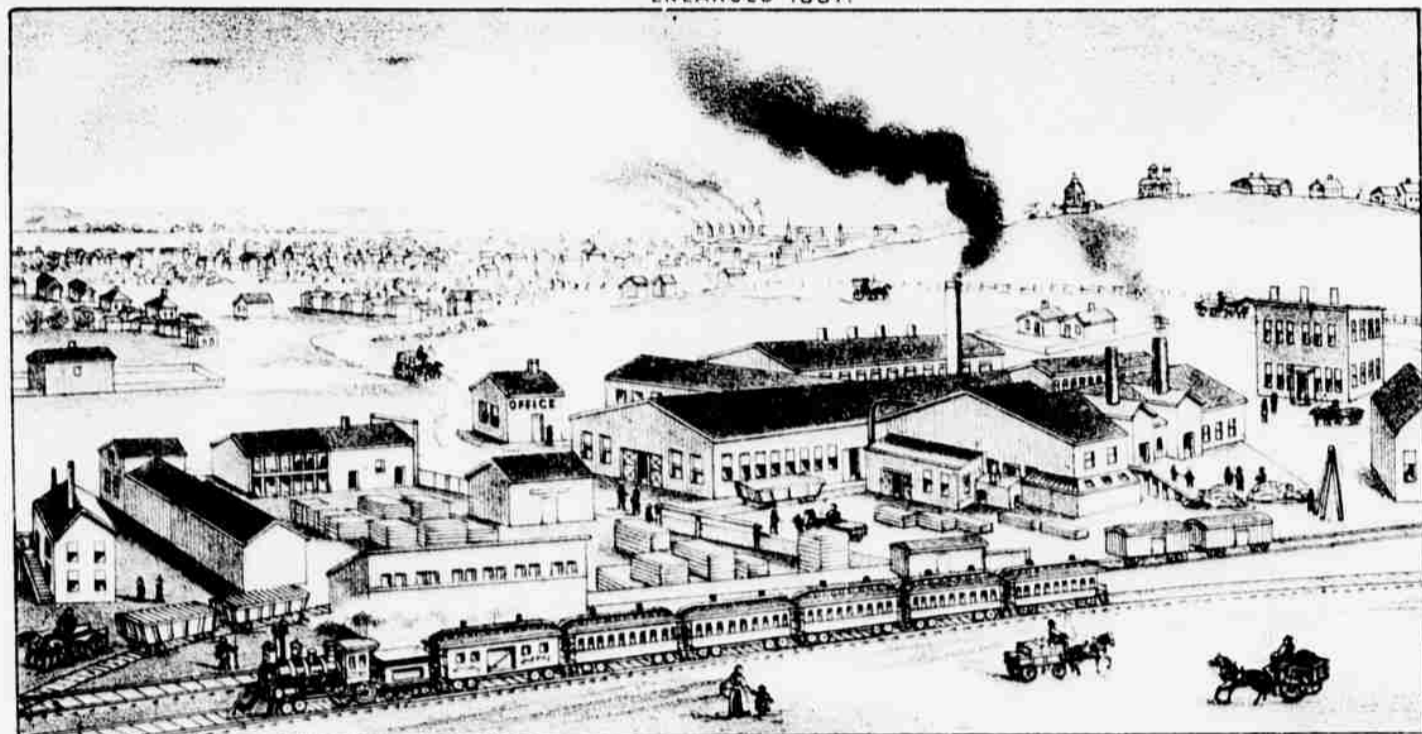
KRUG'S BREWERY.  
ENLARGED 1887



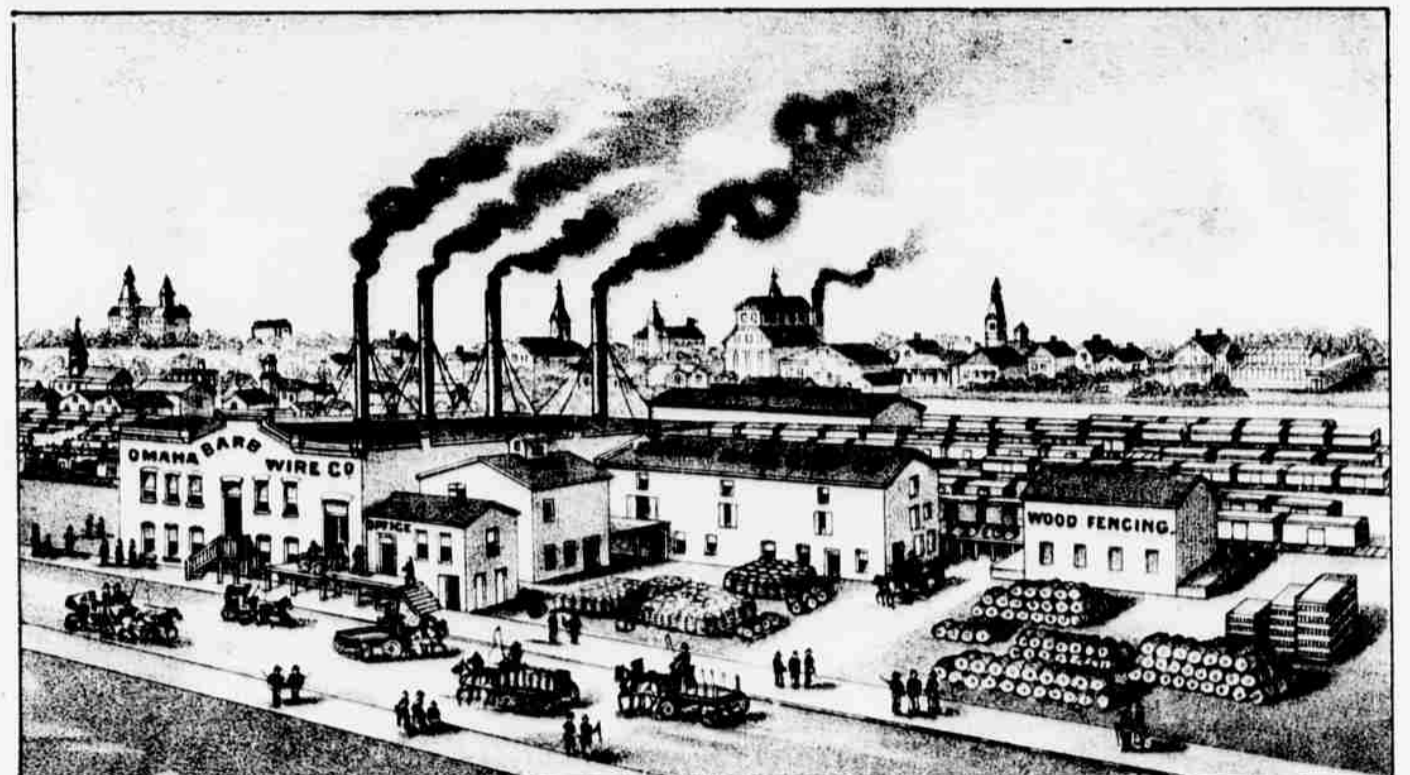
THE WILLOW SPRINGS DISTILLERY.  
ENLARGED 1887.



PAXTON & MERRING IRON WORKS, & MACHINE SHOPS.  
ENLARGED 1887.



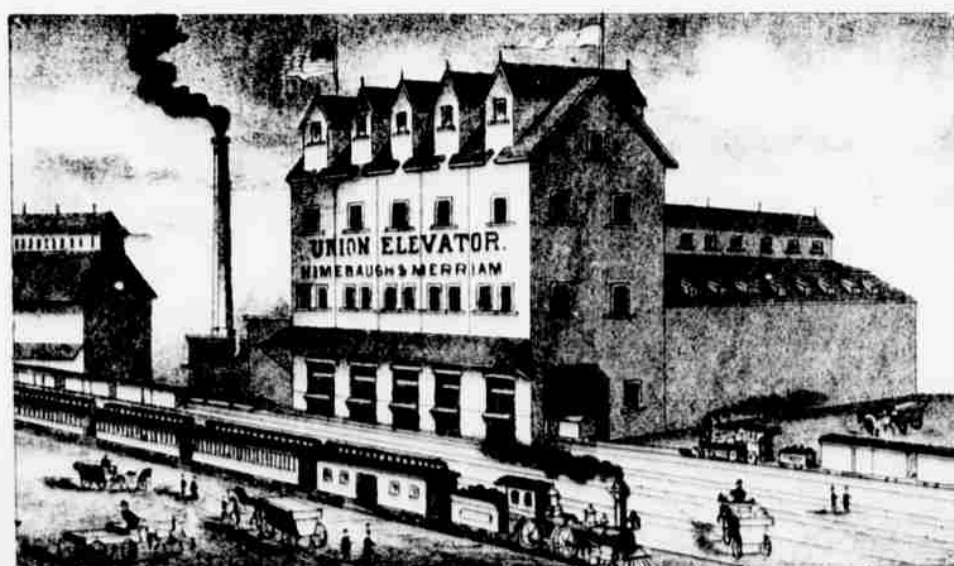
RUSSEL & CURR'S IRON FOUNDRY & MACHINE SHOPS.  
ENLARGED 1887.



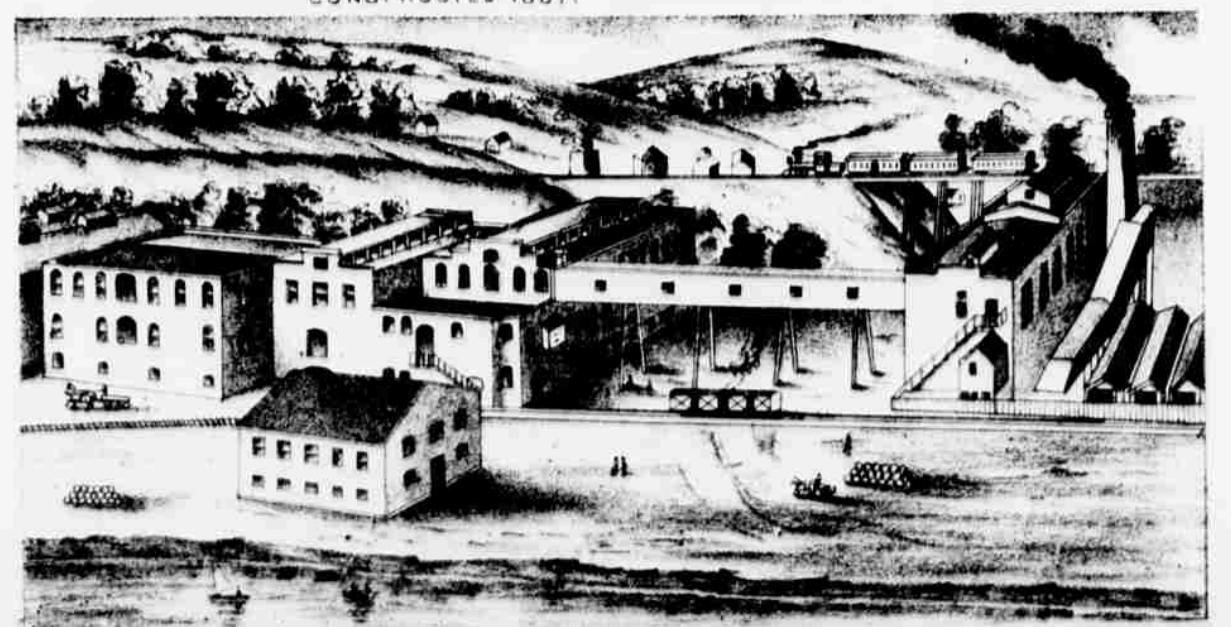
OMAHA BARB WIRE WORKS.  
CONSTRUCTED 1887.



JOHN E. COOP'S FACTORY AND SHOPS.  
ERECTED 1887.



UNION ELEVATOR.



THE OMAHA FUEL GAS FACTORY.