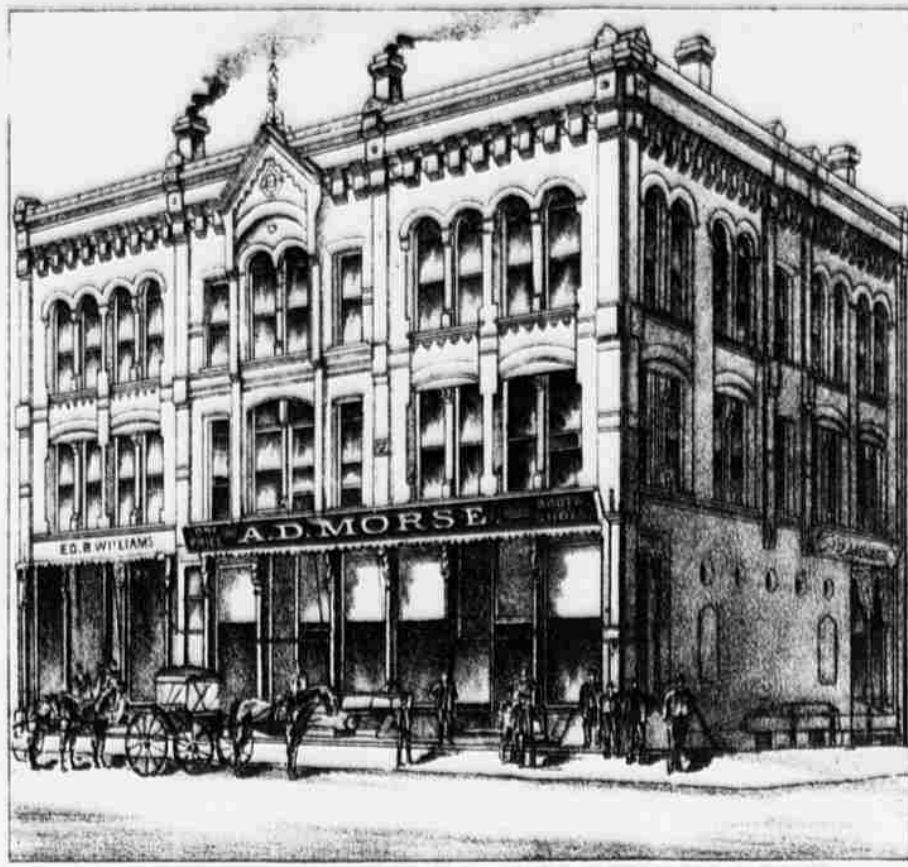




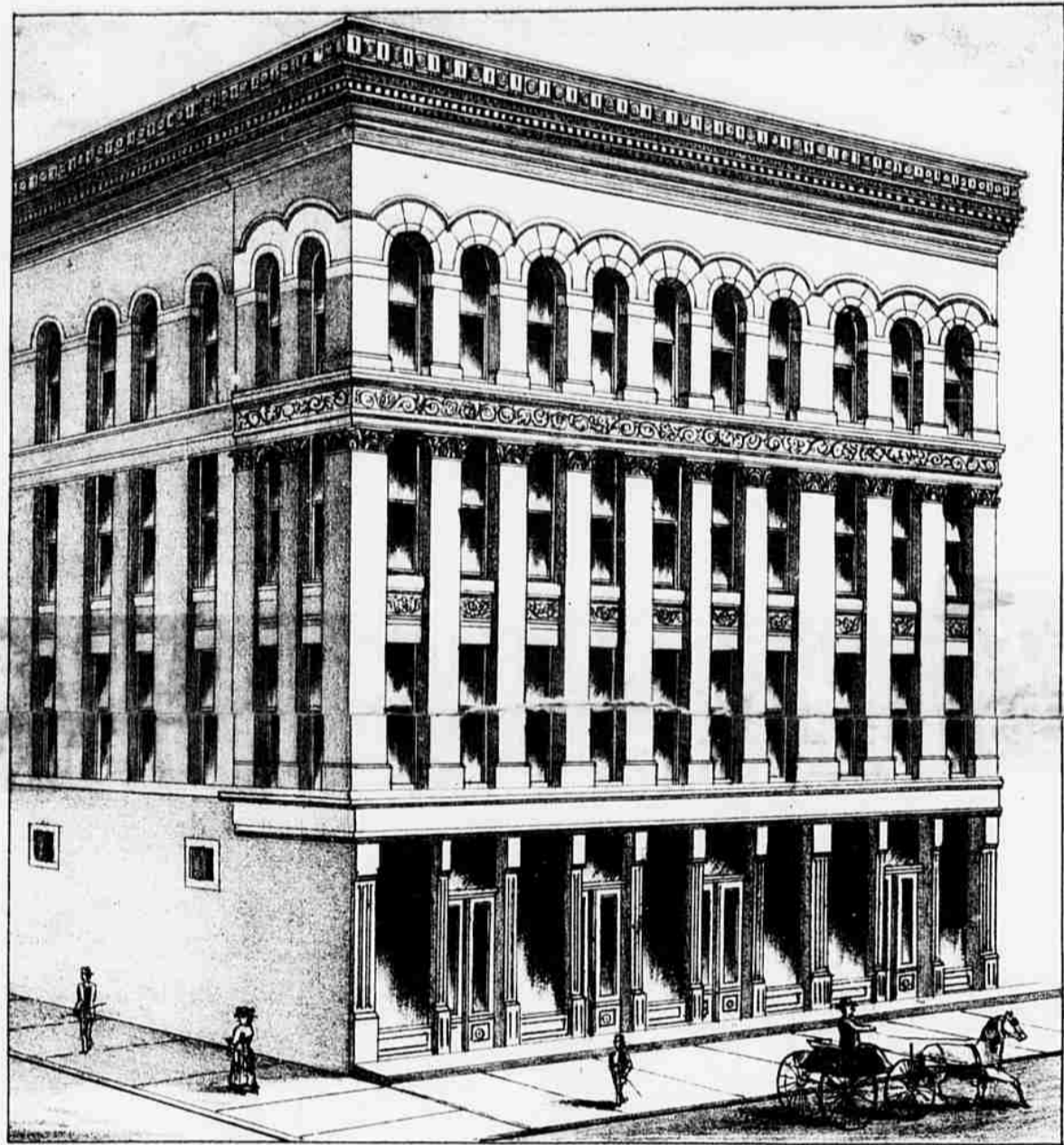
RESIDENCE OF FRANK COLPETZER,
ERECTED 1884.



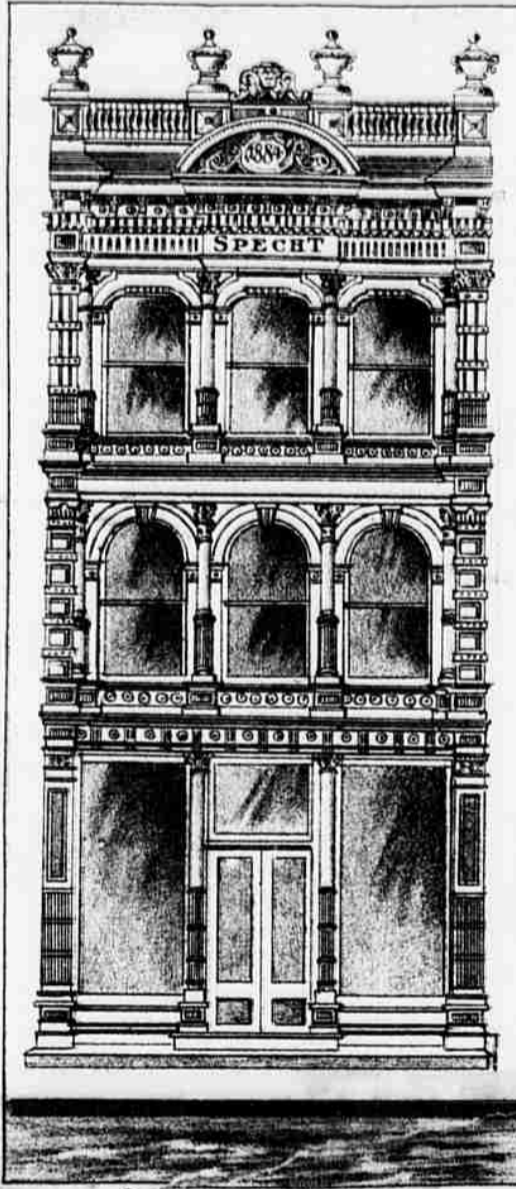
MORSE'S BUILDING, COR. FARNAM & 14TH ST.
ERECTED 1883-84.



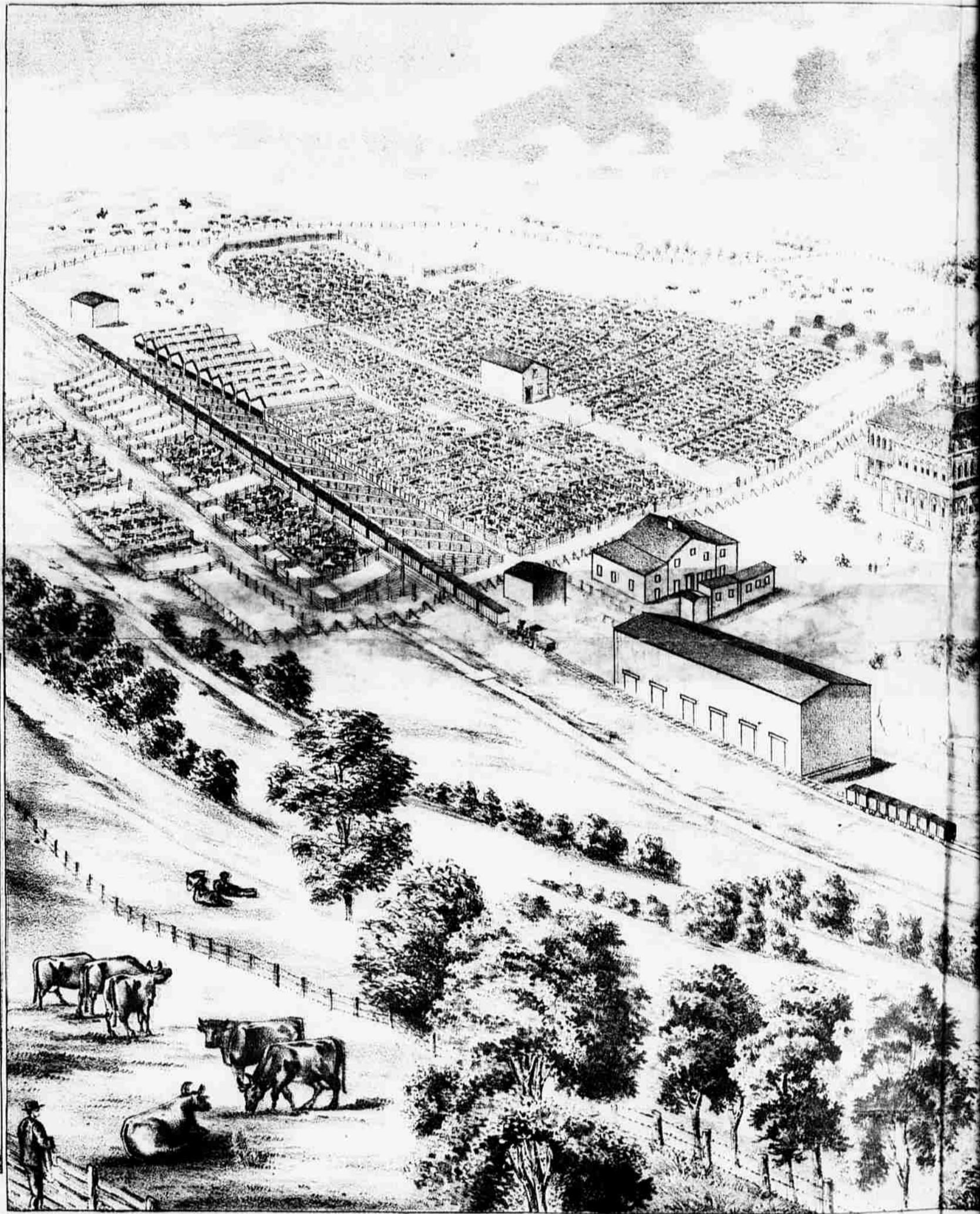
A. L. STRANG'S BUILDING,
ERECTED 1881.
HEADQUARTERS DEPARTMENT OF THE PLATTE.



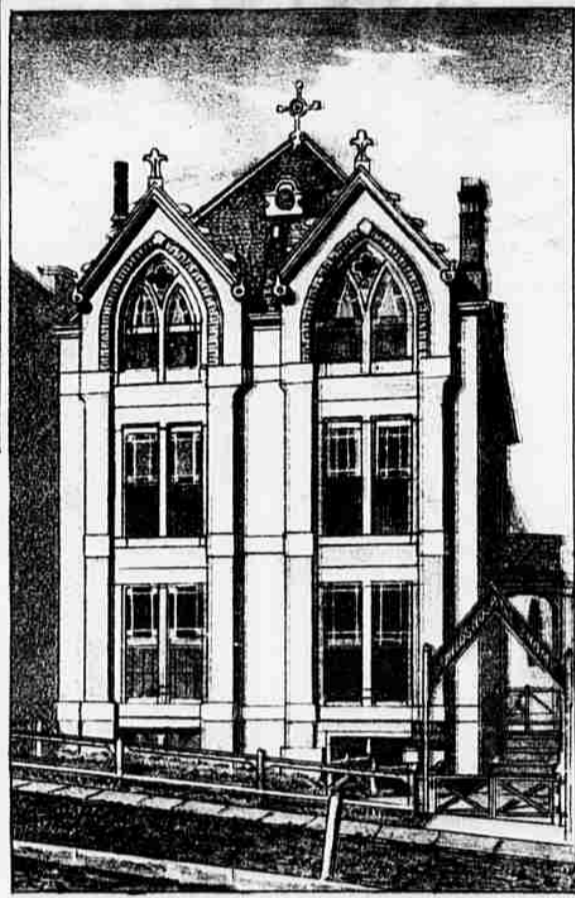
MRS. JOHN A. CREIGHTON'S BUILDING H.O. JONES BUILDING.
ERECTED 1884.



SPECHT'S BUILDING
ERECTED 1884.



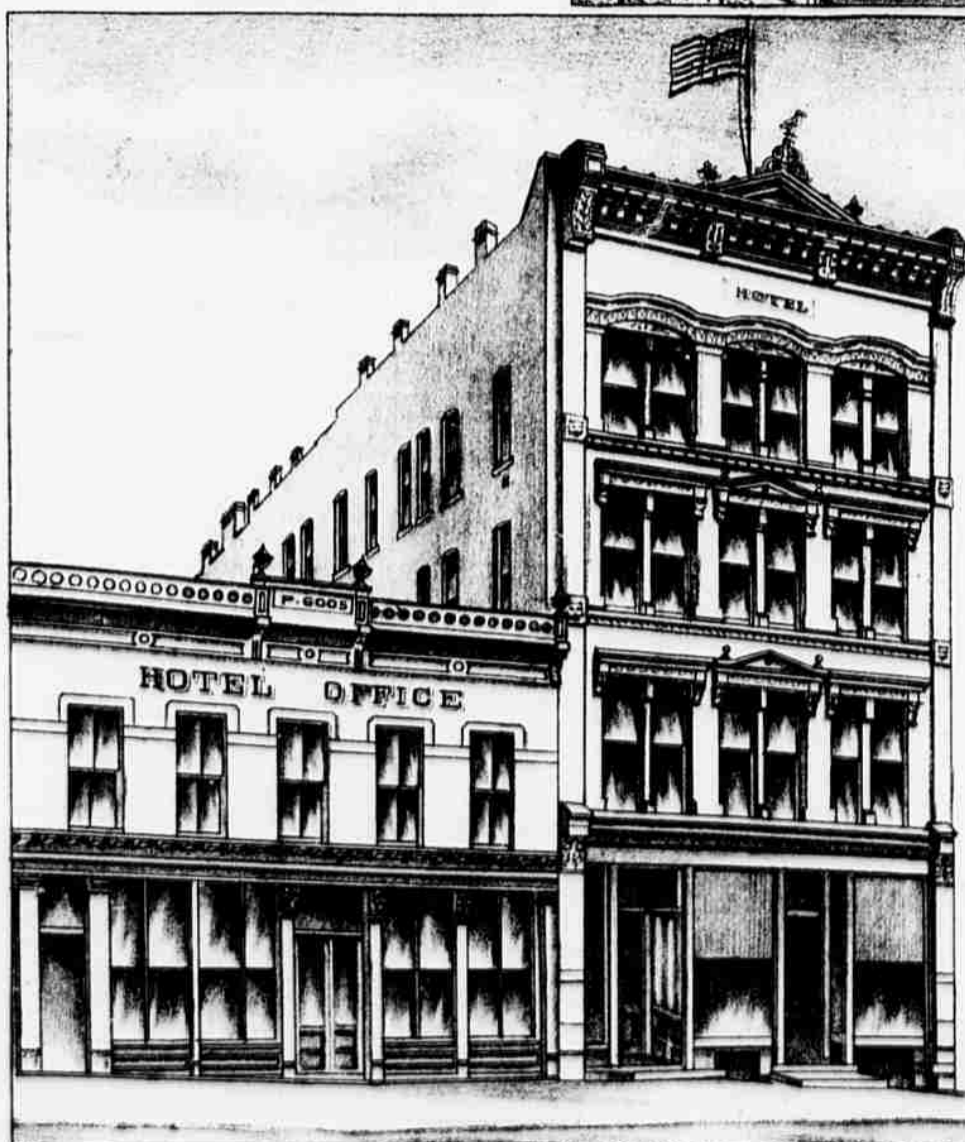
THE OMAHA UNION STOCK YARD



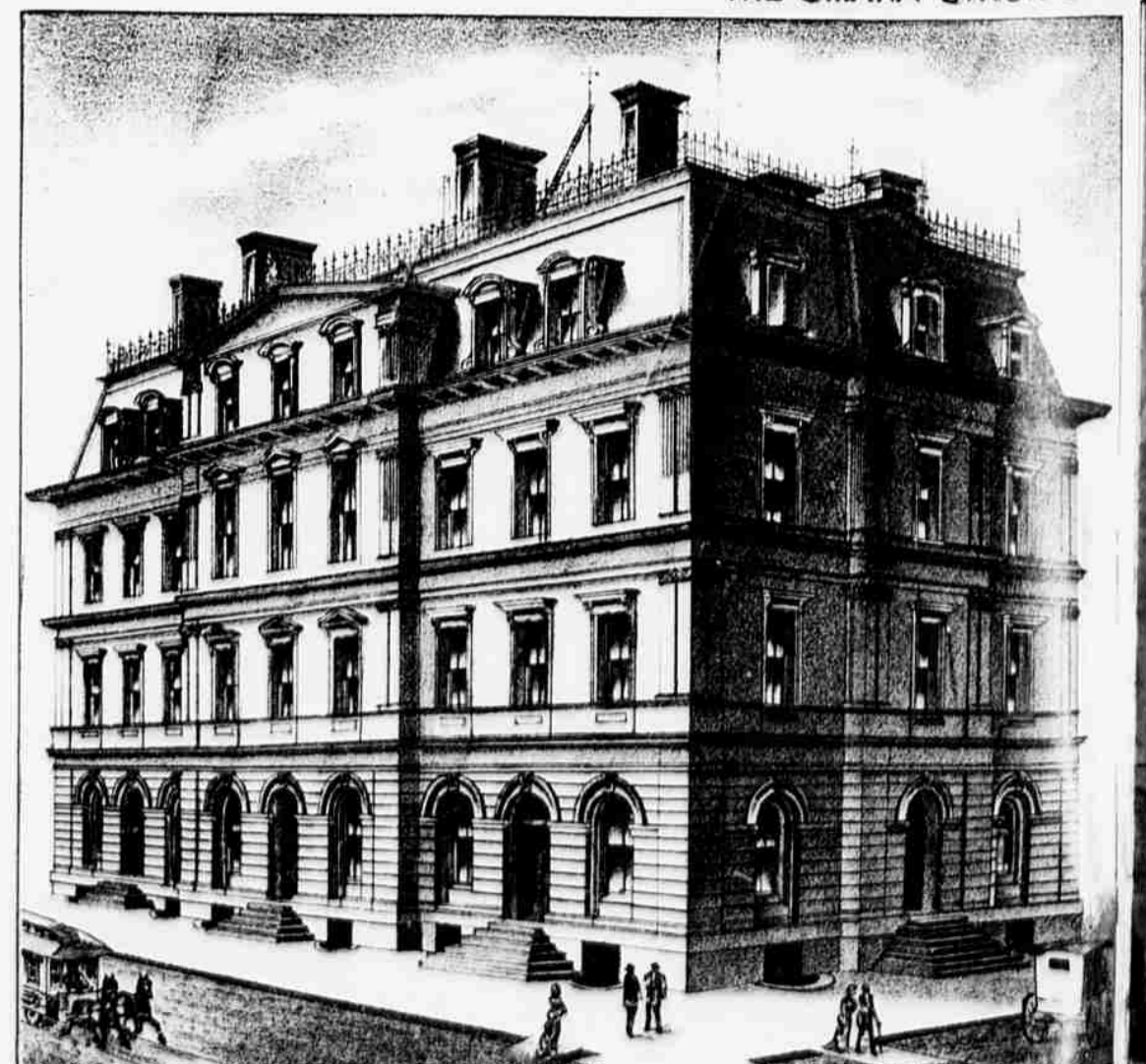
THE CHILDS HOSPITAL & HOME.
ERECTED 1883.



WM. A. PAXTON BUILDING.
ERECTED 1884.



GOOS' HOTEL.



U. S. CUSTOM HOUSE AND POST OFFICE.