



GOING WEST. PRINCIPAL LINE FROM CHICAGO, PEORIA & ST. LOUIS, BY WAY OF OMAHA AND LINCOLN TO DENVER, OR VIA KANSAS CITY AND ATCHISON TO DENVER.

GOING EAST. Connecting in Grand Union Depot at Chicago with through trains for NEW YORK, BOSTON, AND ALL EASTERN CITIES.

GOING NORTH AND SOUTH. Solid Trains of Elegant Day Coaches and Pullman Palace Sleeping Cars.

It is known as the best THROUGH CAR LINE of America, and is universally admitted to be the finest equipped Railroad in the World for all classes of Travel.

H. PHILLIPS, MERCHANT TAILOR. Has one of the largest and finest assortments of Spring and Summer Goods for Suitings and Trouserings.

DOCTOR WHITTER. 617 St. Charles St., St. Louis, Mo. A regular graduate of the Medical College, has been long engaged in the specialty of General Practice.

MARRIAGE GUIDE! 300 pages, the plates, illustrated in cloth and gilt binding. Tells you all you need to know about marriage.

GEO. J. ARMBRUST, TIN ROOFING. CUTTERING, SPOUTING ETC. Orders will be promptly attended to.

PAVER - WITH - SIOUX FALLS GRANITE. 2d your work is done for all time to come.

WE CHALLENGE The World to produce a more durable material for street pavement than the Sioux Falls Granite.

ORDERS FOR ANY AMOUNT OF Paving Blocks - OR - MACADAM filled promptly. Samples sent and estimates given upon application.

WM. McBAIN & CO., Sioux Falls, Dakota. Cut This Out & Return to us with 10c and you will get a GOLDEN SET OF BOOKS.

THE NORTHWEST.

Prosperity and Thrift Everywhere Visible in the Elkhorn Valley.

The Growth of O'Neill, Atkinson and Stuart--Disreputable Characters Valentine.

Correspondence of THE BEE. VALENTINE, Neb., June 2.--The thrift and industry that is manifest, coming through the Elkhorn Valley is a pleasant surprise to any person who may have travelled through this portion of the country years ago.

I visited Valentine with a prejudice against the current stories of rowdiness which are in circulation in regard to that place, but I am forced to believe that some of these stories are well founded.

The Republican party of Cherry county feels ashamed of their would-be organ, the "Reporter," which issues a weekly tirade of abuse on the head of every respectable republican in the county.

Such characters are allowed inside of the post office, where they have every opportunity of indulging in their dishonest proclivities.

PHILLIPS, Hamilton Co., Neb., June 1st.--The B. & M. road has built an extension from Aurora to Grand Island and the iron reached Grand Island Saturday night.

How Fitz John Porter Lives. Fitz John Porter has lived most of the since the war in New Jersey, says one of his Washington friends.

A Stranger in a Strange City. BUFFALO, June 4.--A stranger, apparently from the west, was picked up on the streets, stricken with paralysis.

DR. HAMMOND'S BRIDE.

Romantic Meeting of the Physician and His Fate.

A Glance from an Upper Window of a Hospital--A Long-South Introduction and a Wedding.

Dr. William Alexander Hammond's world-wide fame as a specialist in diseases of the brain and nervous system has been gained by long years of ceaseless study and of successful practice.

All of the youthful physician's fiery southern disposition was aroused. He fell instantly in love with his still unknown charmer but he determined to be presented to her.

Dr. Hammond's earnest wish was soon gratified. From the moment that he entered Miss Nesbit's house he pressed his suit with earnest and untiring devotion.

Two years later Dr. Hammond was appointed surgeon-general of the United States army.

Fink and His Pools. NEW YORK, June 4.--Commissioner Fink announced at a meeting of the standing committee to-day that he had agreed that an advance in tariff be made as soon as all pools are perfected.

Ireland in Alabama. MONTGOMERY, Ala., June 4.--The democrats in state convention to-day nominated by acclamation Governor O'Neal, Secretary of State Phelan, and Treasurer Smith.

Shakespeare's Tragedies. NEW YORK, June 4.--A glove fight to-night between Charles Lange, champion heavy weight of Ohio, and Michael Dempsey, was declared a draw.

SPRING SPORTS.

Saddle and Sulky. BRIGHTON BEACH.

BRIGHTON BEACH, June 4.--1st race--three-fourth mile--won by Vung Fan; time, 1:10.

CHICAGO TROTTERS. CHICAGO, June 3.--The trotting was interrupted by rain.

COVINGTON COLT. COVINGTON, June 4.--Mile and an eighth.--Bonnie Australian won; Followup, 2d; Admiral, 3d.

BASE BALL. [GAMES YESTERDAY.] AT CHICAGO--Chicago, 5; Buffalo, 4.

CYCLONE HAS RETIRED FROM THE STUDD AND WILL GO INTO TRAINING FOR A LATER SEASON.

THE CHICAGO DRIVING PARK OFFERS A PURSE OF \$200, to be trotted for at the summer meeting, free for all except Jay-Eye-See.

THE PRANKNESS STABLED ON THE 22d inst., to Mr. Timmons, of Newark, N. J., the bay horse Buccaneer, 5 years, by Buckden--Jenny McKinney, by Planet.

THE COLUMBUS QUARTO-CENTENNIAL. ST. LOUIS, June 4.--The convention of the exposition and fair managers to-day adopted a resolution appointing committees to report a plan of organization and management for the world's fair to be held in 1892 to commemorate the four hundredth anniversary of the discovery of America by Columbus.

FALCONER'S GREAT SALE. Continues all this Week. GRAND SALE OF SILKS. GRAND SALE OF BLACK GOODS. GRAND SALE OF COLORED GOODS. GRAND SALE OF LINGENS. GRAND SALE OF WHITE GOODS. GRAND SALE OF HOSIERY. GRAND SALE OF UNDERWEAR. GRAND SALE OF GLOVES. GRAND SALE OF LADIES' COLLARS. GRAND SALE OF LACES. GRAND SALE OF JERSEYS. GRAND SALE OF SHAWLS. GRAND SALE OF PARASOLS. GRAND SALE OF SPRING WRAPS. GRAND SALE OF DOMESTICS. GRAND SALE OF SHEETINGS.

N. B. FALCONER. \$4.00 Per Ton! OUR WELL KNOWN Eldon, Lump, and Nut COAL. REDUCED FROM \$5.00. THE CHEAPEST SUMMER FUEL! OMAHA Coal, Coke and Lime Co., 209 S. 13TH STREET. Prompt and Satisfactory Delivery.

Wanted COOKING STOVES HARDWARE HOME-MADE TINWARE. W. F. STOETZEL, 521 South Tenth St., Omaha, Neb.

E. E. WOMERSLEY, M. D. Physician & Surgeon. Over Conk's Drug Store, South 13th Street, near Hickory. Office Hours--8:30 a. m., 1 to 2:30 and 6 to 7:30 p. m. Nights calls promptly attended.

WIRE SCREENS Furnished on Short Notice. GEORGE WADDELL, S. W. Cor. 13th and Duane Sts., - - OMAHA, NEB. CARPENTER AND BUILDER. STORE AND OFFICE WORK A SPECIALTY.

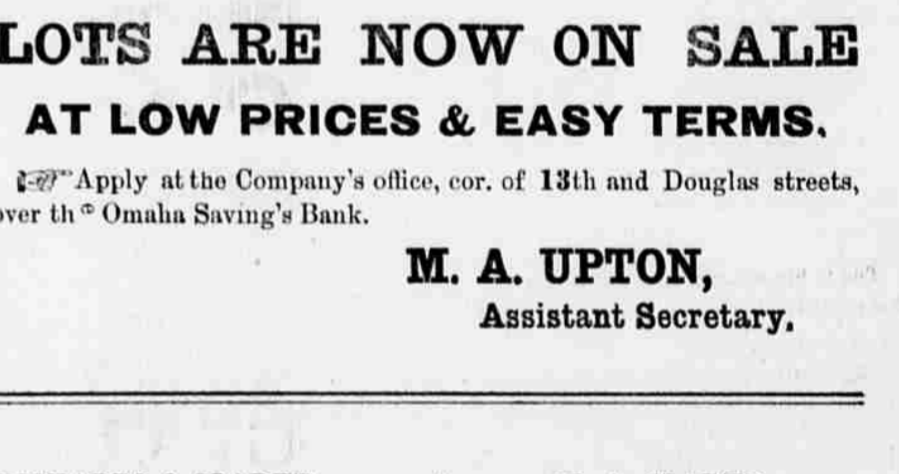
SOUTH OMAHA.

Fine Healthy Homes, FOR THE RICH AND POOR. RETIRED AND THE INVALID. Pure Spring Water. Railroads, Street Cars and Cable Lines.

TEN MINUTES, Giving them the advantage of living on the suburban heights, with pure air, beautiful shade trees and Parks, pure Spring Water and Lakes, Groves and Scenery magnificent, which cannot be equalled. This is a SUMMER RESORT AND A PARADISE FOR ALL, RIGHT AT HOME.

LOTS ARE NOW ON SALE AT LOW PRICES & EASY TERMS. Apply at the Company's office, cor. of 13th and Douglas streets, over the Omaha Saving's Bank. M. A. UPTON, Assistant Secretary.

OMAHA Iron Works U. P. RAILWAY, 17TH & 18TH STREETS. MANUFACTURERS OF AND DEALERS IN Steam Engines, Boilers, WATER WHEELS, ROLLER MILLS, Mill and Grain Elevator Machinery, MILL FURNISHINGS OF ALL KINDS, INCLUDING THE Celebrated Anchor Brand Duffour Bolting Cloth, STEAM PUMPS, STEAM WATER AND GAS PIPE, BRASS GOODS AND PIPE FITTINGS, ARCHITECTURAL AND BRIDGE IRON.



ODELL ROLLER MILL. ODELL ROLLER MILL. We are prepared to furnish plans and estimates, and will contract for the erection of Flouring Mills and Grain Elevators, or for changing Flouring Mills, from Stone to the Roller System. Special attention given to furnishing Power Plants for any purpose, and estimates made for same. General machinery repairs attended promptly. Address RICHARDS & CLARKE, Omaha, Neb.



ODELL ROLLER MILL. ODELL ROLLER MILL. We are prepared to furnish plans and estimates, and will contract for the erection of Flouring Mills and Grain Elevators, or for changing Flouring Mills, from Stone to the Roller System. Special attention given to furnishing Power Plants for any purpose, and estimates made for same. General machinery repairs attended promptly. Address RICHARDS & CLARKE, Omaha, Neb.

ODELL ROLLER MILL. ODELL ROLLER MILL. We are prepared to furnish plans and estimates, and will contract for the erection of Flouring Mills and Grain Elevators, or for changing Flouring Mills, from Stone to the Roller System. Special attention given to furnishing Power Plants for any purpose, and estimates made for same. General machinery repairs attended promptly. Address RICHARDS & CLARKE, Omaha, Neb.