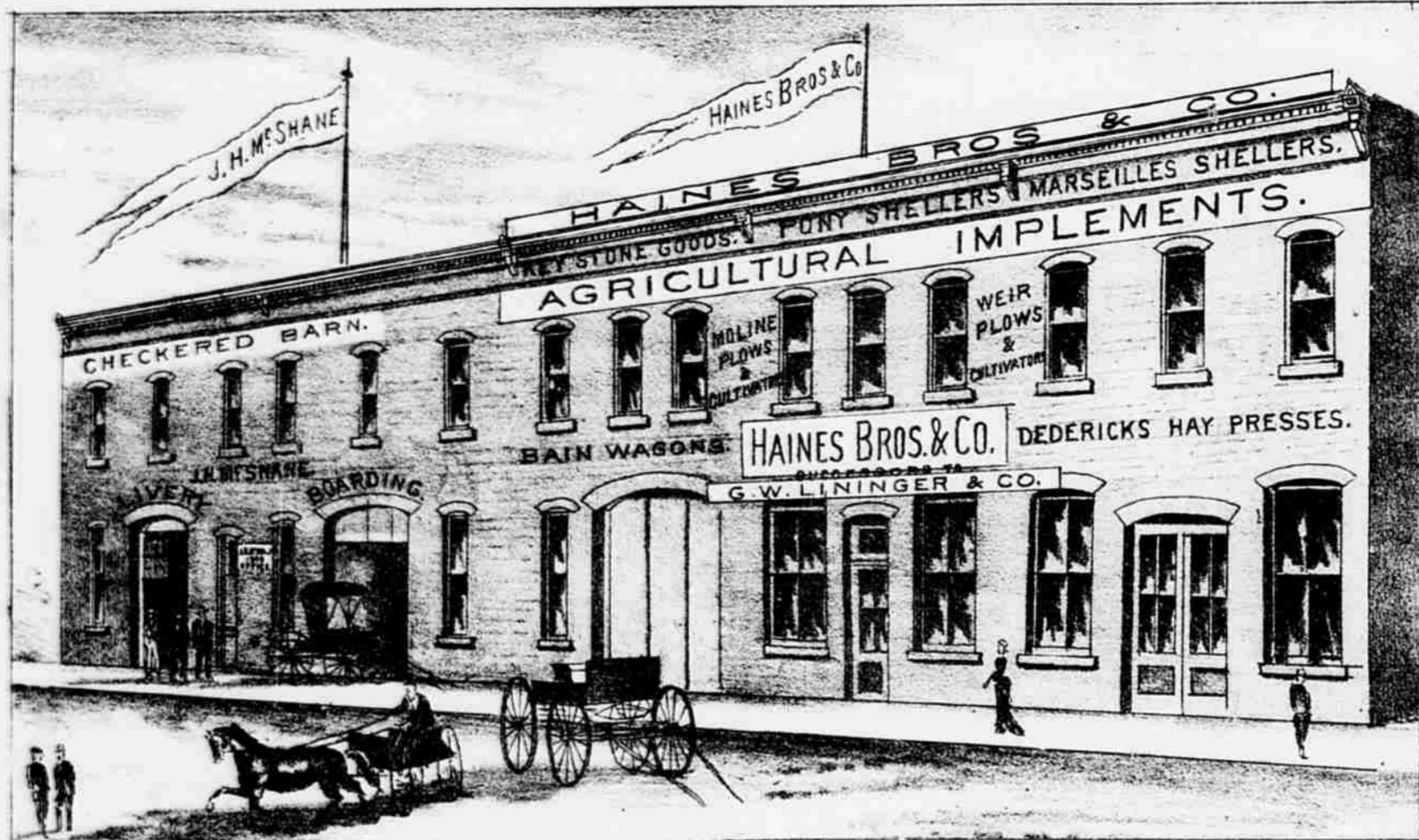


OMAHA IRON AND NAIL CO'S WORKS.



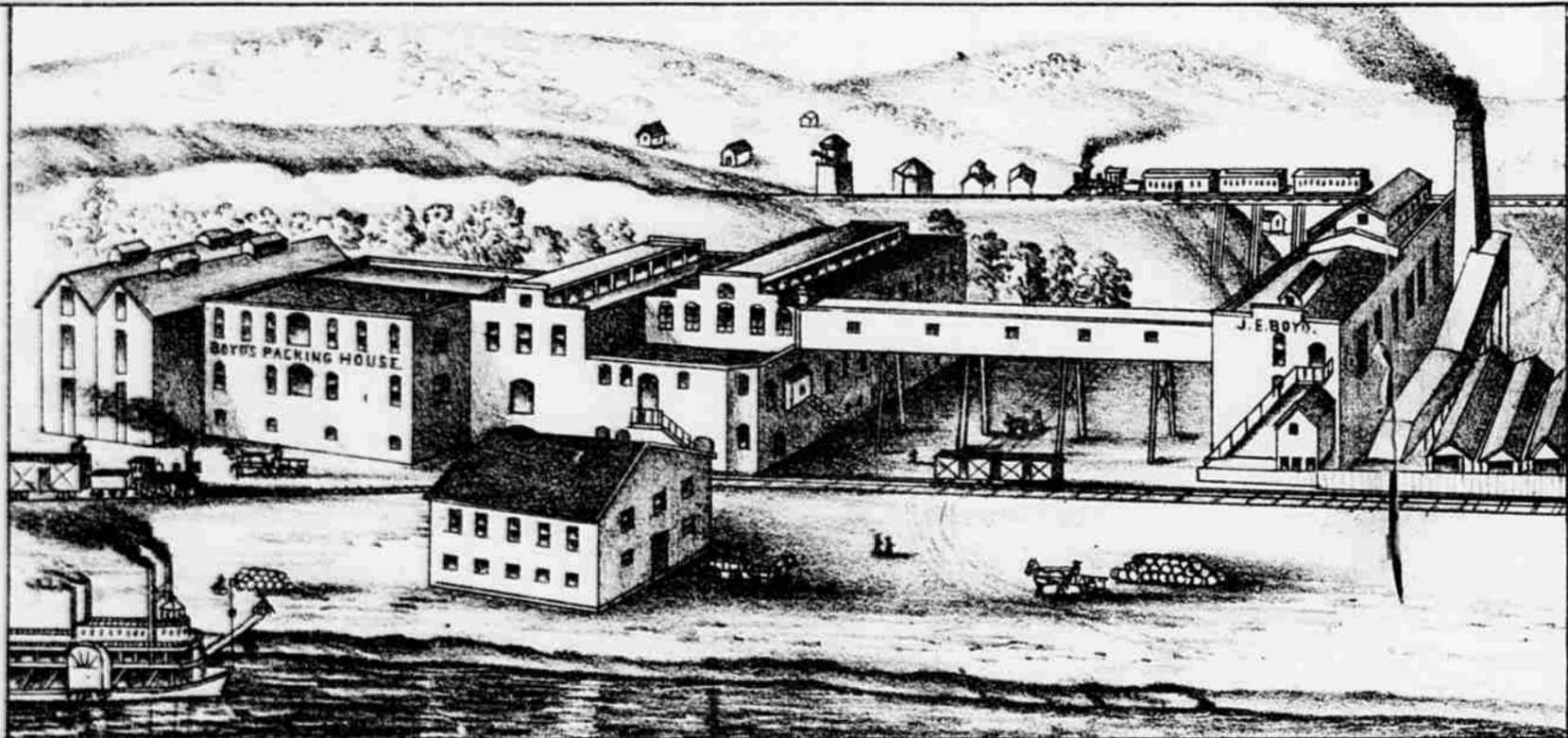
PAXTON & GALLAGHER'S BUILDING.



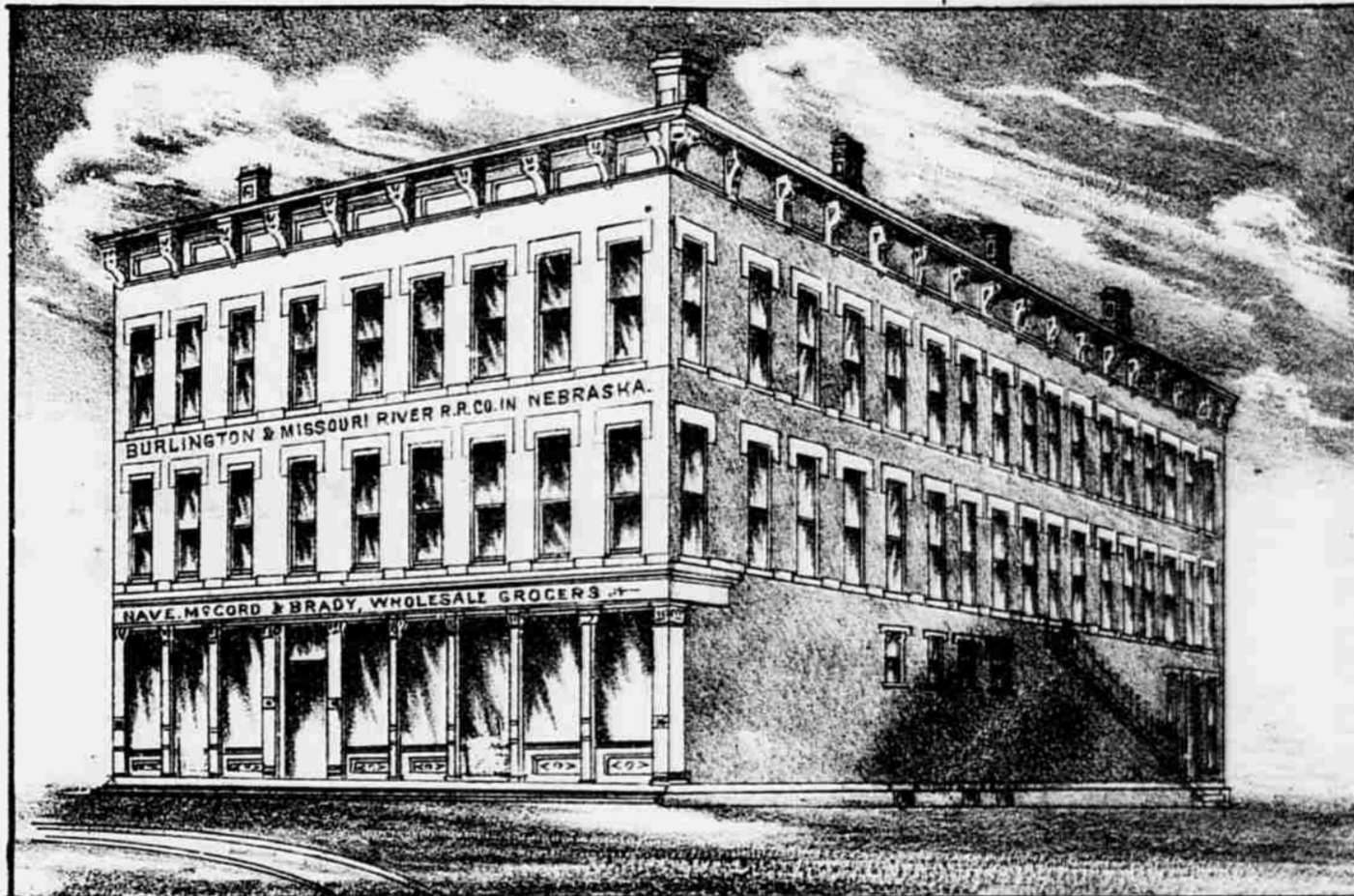
J. S. McCORMICK'S BUILDING, ERECTED 1880.



M. DONOVAN, Prop.



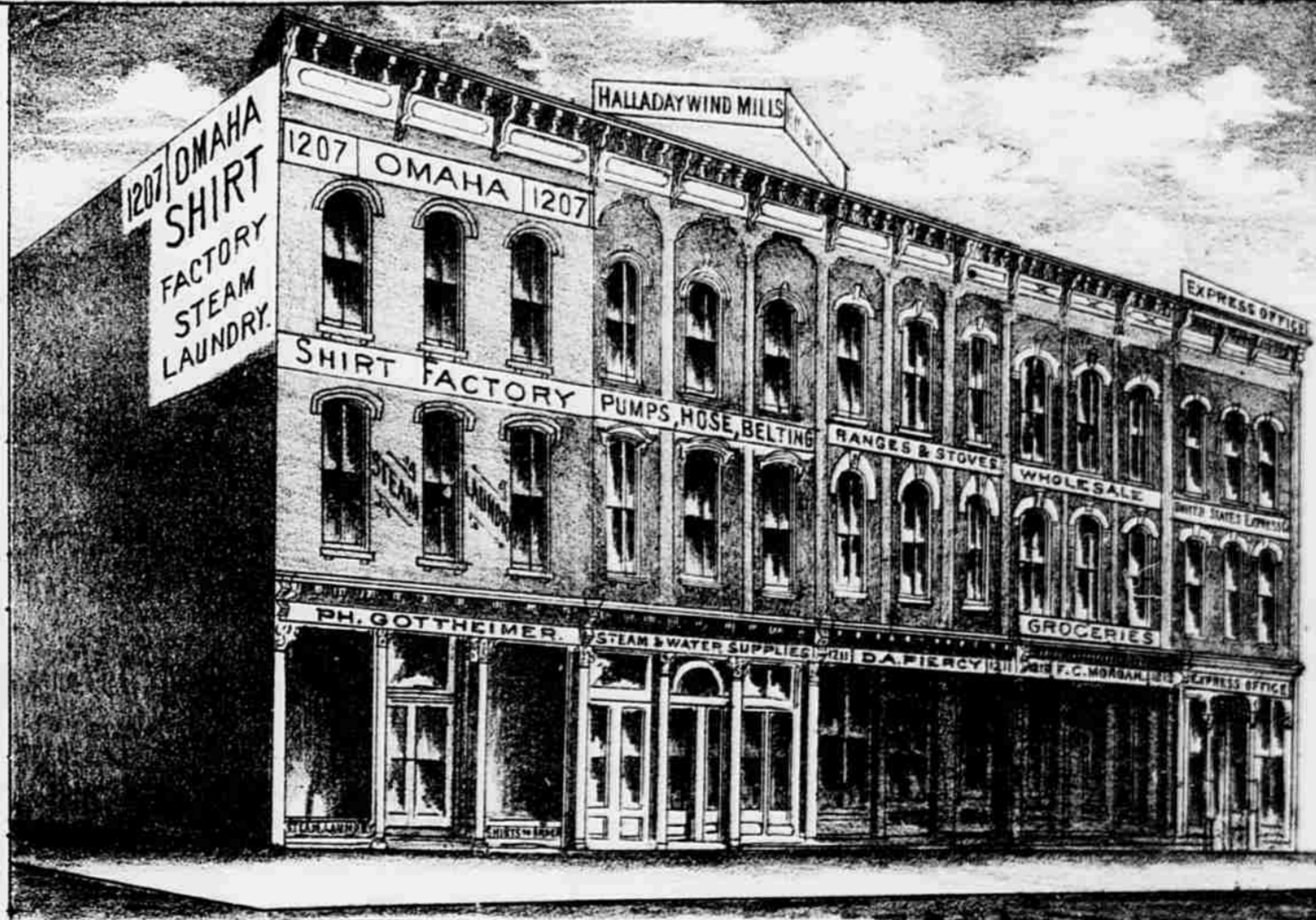
J. E. BOYDS PACKING HOUSE, ERECTED 1880.



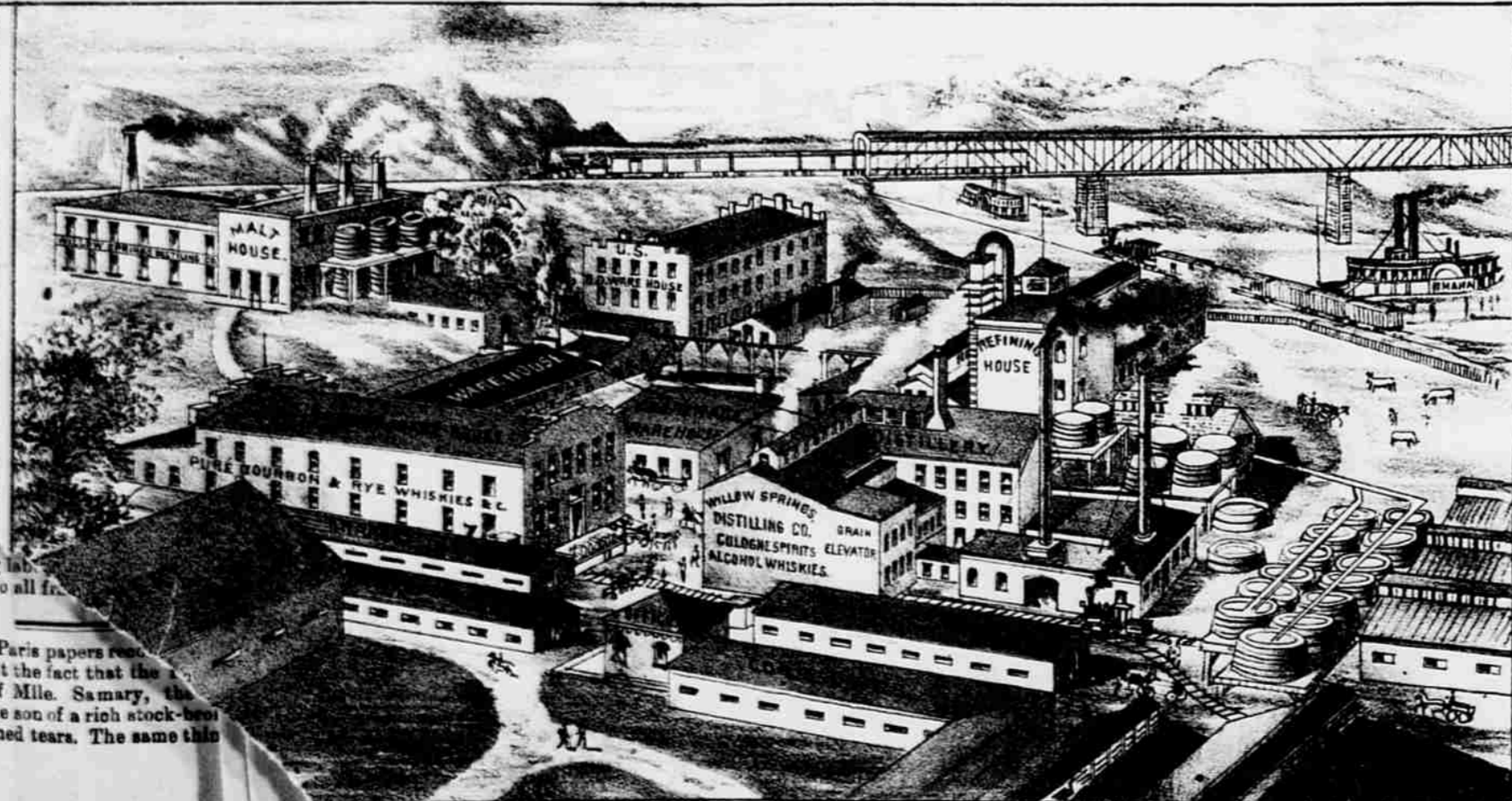
BURLINGTON AND MISSOURI RIVER R.R. HEADQUARTERS.



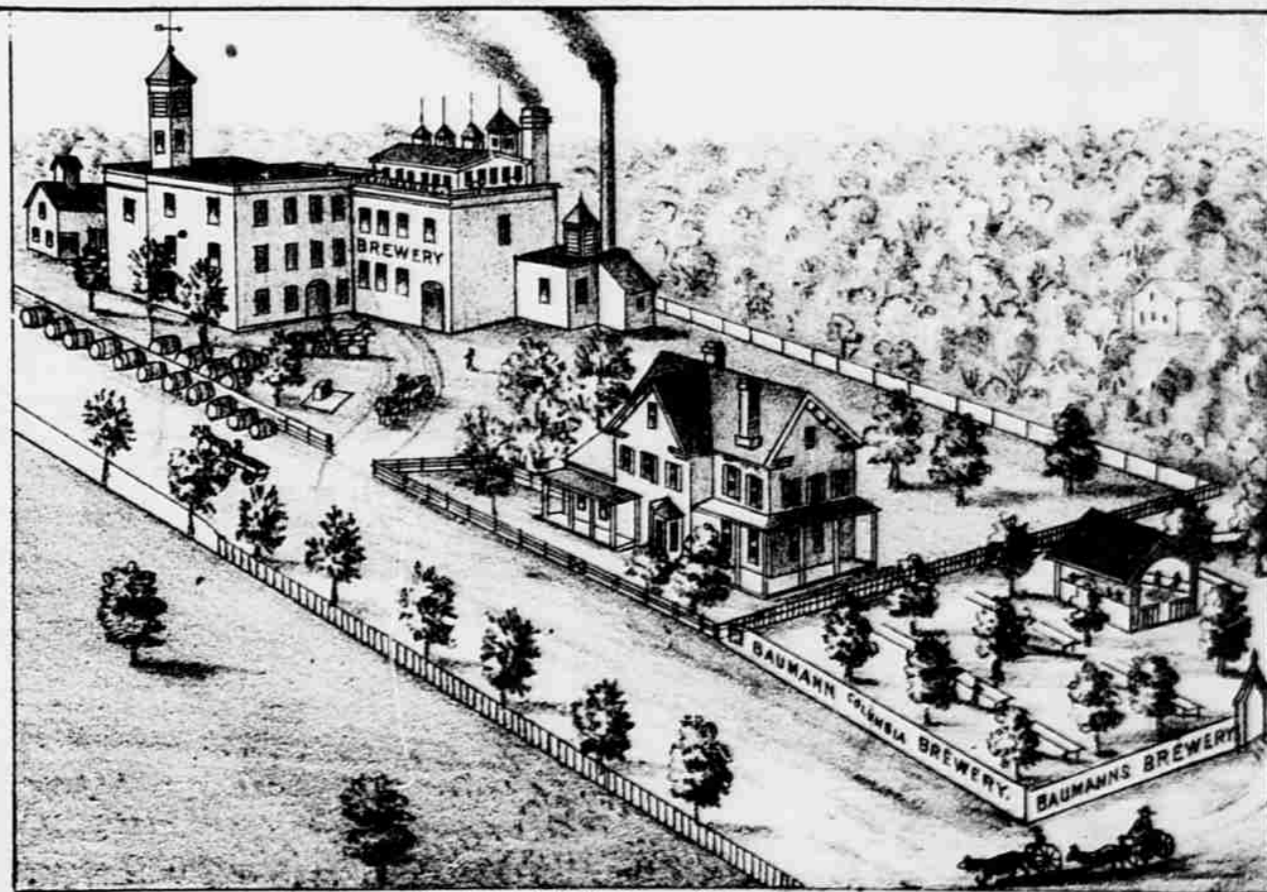
UNION ELEVATOR.



COMMERCIAL BLOCK.



WILLOW SPRINGS DISTILLERY.



MRS. BAUMANNS RESIDENCE.

The Paris papers...
 ment the fact that the...
 ding of Mile. Samary, the...
 with the son of a rich stock-bro...
 bride shed tears. The same th...