

Commercial Hotel.
(Douglas House Enlarged.)
J. J. IMHOFF, - Proprietor.
HENRY WEAVER, MANAGER.
Late of Gault House, Chicago.
Lincoln, Neb.

J. MONTEITH,
MANUFACTURER AND DEALER IN
BOOTS AND SHOES,
Made from the best material and warranted. Re-
pairing neatly done on short notice.
North side Square. **LINCOLN, NEB.**

Wicker, Kennard & Co.,
BANKERS,
LINCOLN, NEBRASKA.

YOUNG & CHASE,
PHOTOGRAPHERS,
O Street Between 10th and 11th
LINCOLN, NEBRASKA.

Steam Bakery.
Students and others desiring Bread,
Crackers, Pies, etc., will find it to their
interest to call at the Steam Bakery, North
side of Public Square—Next to the At-
wood House.

Tuttle & Harwood,
ATTORNEYS AT LAW,
LINCOLN, NEBRASKA.

WILLIAM DEVEREAUX,
Manufacturer of Fine Cigars,
AND DEALER IN ALL OF

Chewing and Smoking
Tobacco,
And Smokers' Articles of all
Descriptions,
O Street, Three Doors East of Tenth,
LINCOLN, NEBRASKA.

McCLURE BROS.,
Have on hand
A COMPLETE ASSORTMENT OF

GENTS'
FURISHING GOODS,

HATS AND CAPS,
CORNER OF O AND 11TH STREETS,
LINCOLN, NEBRASKA.

C. H. Van Fossen,
AGENT FOR THE
PEACOCK FORT SCOTT
COAL,
HARD, and soft
WOOD.
LINCOLN, NEBRASKA.

AMASA COBB, Pres't. J. F. SIDDUTH, Cashier.
W. P. PHILLIPS, Vice-President.

First National Bank
OF LINCOLN.

Authorized Capital,
HALF MILLION DOLLARS.

DIRECTORS,
AMASA COBB. W. P. PHILLIPS,
J. F. SIDDUTH. J. G. MILLER.
W. P. FARWELL.

JOHN L. McCONNELL,
Dealer in

Staple & Fancy Dry Goods
AND NOTIONS,

No. 12, Briggs' block, South side O Street,
LINCOLN, NEBRASKA.

CENTRAL MARKET.

Bohanan Bro's,
—DEALERS IN—
Meats, Sausages, Game and Provisions
of all Kinds.
South Side Market Space,
LINCOLN, NEBRASKA

H. W. HARDY,
Offers special inducements to
STUDENTS! TEACHERS! PREACHERS!
AT HIS BRICK

FURNITURE STORE,
No. 11, 10th Street,
Lincoln, Nebraska.
*Recommended by the State Superintendent
of Nebraska.*

The Standard.
The Largest. The Cheapest. The Best.

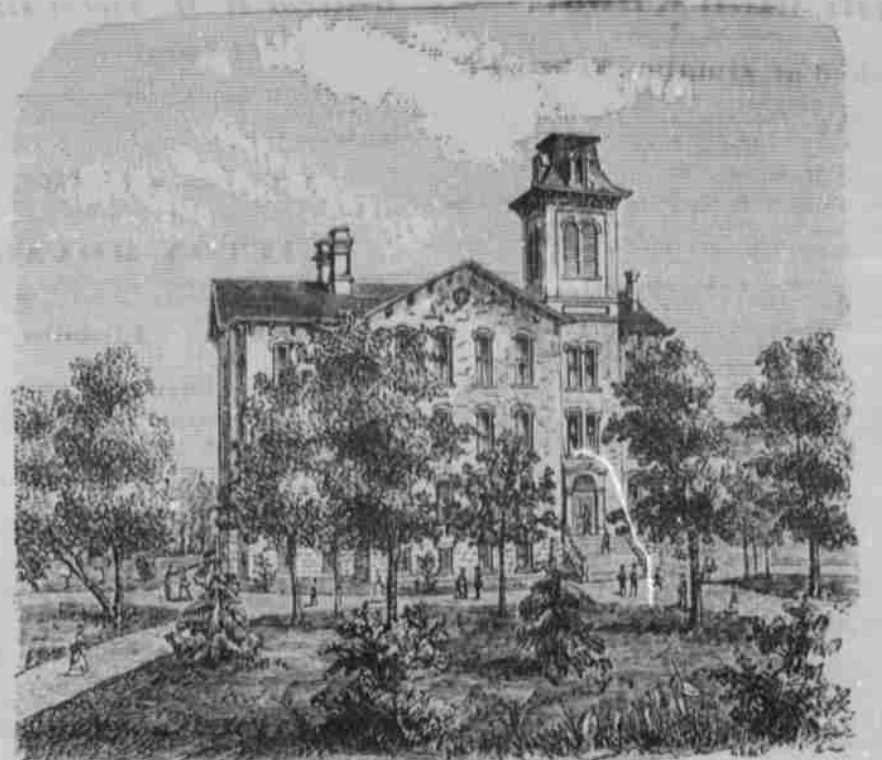
Worcester's Quarto
Dictionary.

The authority of the U. S. SENATE and HOUSE
OF REPRESENTATIVES, and of EVERETT, SUMNER,
QUINCY, RIVES, WINTHROW, MARSH, MANN, HIL-
LARD, HOLMES, LONGFELLOW, ALEXANDER, BY-
RANT, IRVING, HENRY, FELTON, and the leading
authors of Europe and America.
The "MEDAL OF MERIT" was awarded at
the Vienna Exposition to Worcester.
Retail price \$10; liberal discount made to
school districts, teachers, ministers and clubs.
Correspondence solicited.

Brewer & Tileston
ALSO PUBLISH
HILLARD'S READERS,
FRANKLIN'S READERS,
WORCESTER'S DICTIONARIES,
WORCESTER'S SPELLING BOOKS,
SEAVEY'S U. S. HISTORY,

All of which are recommended by the State Su-
perintendent of Nebraska for use in all the com-
mon schools of the State, and in use in a large ma-
jority. Single copies of any of the above for ex-
amination (except Quarto Dictionary) will be
sent by mail to any teacher sending one half
the retail price. Address

JOHN M. TAGGART,
Palmyra, Nebraska.



NORMAL SCHOOL, PERU, NEMAHA COUNTY, NEBRASKA.

UNIVERSITY OF NEBRASKA,
LINCOLN, NEBRASKA.

The University of the State was opened for
the second year September 12, 1873, under favor-
able conditions, and thus far has been prosperous
and successful.

PROFESSORS.
The Faculty, at present, is composed of seven
Professors, skilled in their several departments
of instruction.

ADMISSION.
Students of both sexes are admitted to the
University on passing examination in the com-
mon English branches, if entering the Latin
School; or in studies of advanced classes, if
claiming an advanced standing.

TUITION.
Tuition in all departments is FREE. There is
an entrance fee of \$5. Books are furnished at
cost.

APPARATUS, ETC.
The Institution is liberally supplied with Ap-
paratus, Cabinet, Library, and all needful facili-
ties for illustrating the subjects taught. The
Philosophical and Chemical Apparatus is espe-
cially large and valuable.

AGRICULTURAL COLLEGE.
The Agricultural College is now open, and fur-
nishes a full course of instruction running
through four years, or a partial course in prac-
tical agriculture, requiring one year. The com-
pletion of the full course entitles the student to
a degree.

BOARDING.
Boarding is obtained at reasonable rates in pri-
vate families, or by renting rooms the expense
may be reduced to \$2 or \$3 per week. At present
boarding in families is from \$4 to \$5 per week.

CALENDAR.
The Fall Term began Thursday, September 12.
The Winter Term will begin Thursday, Jan-
uary 2, 1874.
Correspondence is solicited by the Chancellor
from those intending to enter College.
The health of our State and the facilities
offered in the University, should be strong in-
ducements for those seeking health and advan-
tages for education.
For circulars and other information respecting
the University, address
A. B. BENTON,
Chancellor University of Neb.,
LINCOLN, NEB.

C. B. PARKER,
—WHOLESALE AND RETAIL DEALERS IN—
Hardware, Nails, Stoves and Tinware,
ALSO
TABLE AND POCKET CUTLERY, AGRICUL-
TURAL IMPLEMENTS AND MECHAN-
ICAL TOOLS.
O street, between 9th and 10th.
LINCOLN, NEBRASKA.

CLIVE'S
PHOTOGRAPH ROOMS,
One door south of Post Office,
LINCOLN, NEBRASKA.

NEBRASKA
State Normal School.

FACULTY.
T. J. MORGAN, Principal,
Mental and Moral Science; School Economy.

JAMES BELLANGEE,
Mathematics.

KATE S. DICERMAN,
Instrumental Music; Gymnastics.

ALBERT NICHOLS,
Principal of Preparatory School.

ELIZA C. MORGAN, Preceptress,
Rhetoric; English Literature.

W. E. WILSON,
Natural Science; Greek.

M. HELEN BURT,
Methods; Latin.

ELLEN E. JOHNSTON,
Principal of Model School.

CALENDAR.
Board Meets Quarterly--December,
March, June, September.

First Term begins Thursday, Sept. 4, 1873; Ends
Wednesday, Jan. 1874. Second Term begins
Thursday, Feb. 4, 1874; Ends Tuesday,
Jan. 23, 1874.

Students can enter at any time. The best time
is at the beginning of the year; or, if that is
not practicable, then either November 13,
February 4, or April 15.

Tuition free. Number of students enrolled
since September over three hundred. For catalog-
ue address

T. J. MORGAN, Principal.

O. W. WEBSTER & BRO,
DEALERS IN

BOOTS & SHOES,
LEATHER & FINDINGS,
No. 3 East O Street,
Lincoln Neb.

Have just received a complete stock of goods di-
rect from Eastern factories.

Students,
Ministers and
Others

Will find it to their advantage to call and exam-
ine before purchasing elsewhere, as a liberal dis-
count is always offered to such individuals.

REPAIRING DONE TO ORDER.