

MISSOURI EASILY BEATEN.

Wednesday afternoon the university baseball team succeeded in starting the ball season in a glorious manner by defeating the University of Missouri team with a score of 20 to 4. The game was played upon a muddy and slippery field and one not at all conducive to good ball playing, however the playing on the infield of both teams was good. Missouri was burdened with a pitcher who proved to be about as easy a find as the 'varsity team had made; this fact coupled with the support he received in the out field will perhaps account for the appearance of the score. Bliss on the other hand pitched a superb game, keeping his arm the entire game. He struck out eight men and allowed Missouri only five hits. The team as a whole gave him good support both on the out and in fields. Reeder played second in first class shape and with a little practice he will be up to his old form. Another noticeable feature was the batting of the home team; their stick work was good and there has been a great improvement over the early part of the season. The first time at bat the university succeeded in batting clear around, and by bunching their hits ran in eight scores. Again in the fourth inning, remembering how easily they had sent the sphere into the out field they again resumed that occupation and succeeded in piling up eight more scores, while the Missourians in their half scored once. At this point Missouri became somewhat discouraged and Nichols was replaced by Hawkins and as a result no scoring was done until the eighth inning when the home team sent two men around. In the ninth the Missourians ran in three scores, making the final score 20 to 4.

Positions.

Nebraska.		Missouri.
Doane	c	Garvin
Bliss	p	Nichols
Rhodes	1st b	Cooper
Reeder	2nd b	Hawkins
Gordon	3rd b	Jeffries
St. Clair	ss	Yont
Bell	rf	Washer
DePutron	cf	Mason
Bolen	lf	Roken

Score by innings:
 Nebraska 8 2 0 8 0 0 2 *--20
 Missouri 0 0 0 1 0 0 0 3-- 4

Talk with Miss Morgan about type-writing your thesis, 70 Lindell.

ASK THE SENIORS ABOUT OUR WORK.



1029 O ST.

Allegretti & Lowney
CHOCOLATES
 at Rector's Pharmacy
 N.W. Cor. 12th and N Sts. Lincoln, Neb.

STUDENTS
TRY HENDRY'S RESTAURANT.
 Everything served First-Class at moderate prices. Nearest the University.
 129 NOR. 11TH ST. 'PHONE, 896.

THE ALBERT TEACHERS' AGENCY
 Central Music Halls, Chicago.
 Fifteenth Year. 3250 Positions Filled. Nearly 300 in '99. List of Schools of and Colleges in which we fill positions sent free.
 Address: C. J. Albert, Manager.

STUDENTS go to
C. D. BOWDISH'S
SHAVING PARLOR
 For Satisfactory Barber Work.
 Farmers and Merchants' Insurance Co. Bldg.
 Fifteenth and O Streets.

MICHIGAN COLLEGE OF MINES
 Summer Practice Courses in Surveying, Shop Practice, Ore Dressing, Mine Surveying, and Mining and Field Geology. Booklet of half tones illustrating the work, ready May 1st. For booklet and catalogue address
 F. W. McNAIR, Pres't.,
 Houghton, Mich.

Inflate Your Tires Without Work Without Price
 You are invited to use our compressed air plant to inflate your tires. No work for you. No charge from us.
C. L. SHADER,
 Bicycle Repairing.
 312 South Twelfth.

Korsmeyer Plumbing and Heating Co.
 GENERAL CONTRACTORS FOR
PLUMBING, HEATING, AND LIGHTING.
 GAS AND ELECTRIC FIXTURES.

215 SO. 11TH STREET, LINCOLN, NEB.



MONTROSE BICYCLE SENT FREE

on approval to your address **WITHOUT A CENT IN ADVANCE.** SEND US YOUR ORDER, state whether you wish lady's or man's wheel; give color, height of frame and gear wanted and WE WILL SHIP THE WHEEL. C. O. D. on approval, allowing you to uncrate and examine it fully before you accept it. If it is not all and more than we claim for it, and a better wheel than you can get for any where near the price from any one else, refuse it and we will pay all express charges ourselves. The "MONTROSE" Bicycle \$16.50 at our Special Agent's sample price of \$12.50 is the greatest bargain in a bicycle ever offered. We guarantee it equal to any 40 wheel on the market, and you need not accept it nor pay a cent if you do not find it as we represent. We are **EXCLUSIVE BICYCLE MANUFACTURERS** and take this method of quickly introducing our 1900 MODELS. This offer of a sample wheel at this low price is made to secure a **RIDER AGENT** in each town to represent us and take orders. Our agents make money fast.

SPECIFICATIONS. Frame, 32, 34 or 26 inch; ladies, 22 inch. Best quality, Shelly seamless tubing with forged connections. Flush joints, improved expander device to fasten seat post and handle bars; Royal Arch crown; the celebrated Davis hubs and fender—the easiest running known; Record "A" tires, the best and one of the most expensive tires on the market. The genuine #4 Messenger Hygienic saddle; pedals, tools and accessories the best obtainable. Enameled in black, maroon or coach green, highly finished and ornamented; special finished nickeling on all bright parts. We thoroughly test every piece of material that goes into this machine. Our binding year's guarantee bond with each bicycle.

FREE to any one sending the \$16.50 cash in full with order we will send free a genuine **Burdick** 10,000 mile barrel pattern cyclo-motor; or a high grade floor pump. Your money all back if you are not perfectly satisfied.

CHEAP WHEELS. We do not manufacture the cheap department store kind of wheels, such as many new, however, at \$5 to \$7 stripped; or \$9.75 to \$12.50 complete. We do not guarantee nor recommend them. **BEFORE ORDERING** a bicycle of any one else, no matter who or how cheap, write us and let us tell you how much we can save you on the same machine.

If you are **UNABLE to BUY** a wheel we can assist you to **EARN A BICYCLE** by distributing catalogues for us a few days. We need one person in each town for this purpose. We have several hundred **SECOND HAND WHEELS** taken in trade which we will close out at \$5 to \$10 each; also some shopworn samples and 70 models very cheap. Send for **Bargain List.** **OUR RELIABILITY** is unquestioned. We refer to any bank or business house in Chicago, or any express or railroad company. We will send you letters of reference direct from the largest banks in Chicago if you wish it. **SEND YOUR ORDER** today. This low price and these special terms of shipment without deposit will be withdrawn very soon. Give name of this paper.

J. L. MEAD CYCLE COMPANY, Chicago, Ill.

Canon Pea, the best, cleanest, cheapest. \$5.50 a ton. Gregory the Coal Man.

HARVARD UNIVERSITY...
MEDICAL DEPARTMENT
 BOSTON, MASS.
 ON and after June 1, 1900, candidates for admission must present a degree in Arts, Literature, Philosophy, or science, from a recognized college or scientific school, with the exception of such persons, of suitable age and attainments, as may be admitted by special vote of the Faculty taken in each case.
 For detailed information concerning courses of instruction, or catalogue, address,
 Dr. Wm. L. Richardson, Dean,
 Harvard Medical College, Boston, Mass.



NO OIL CAN NECESSARY.
MAGAZINE SELF-OILER
 WARRANTED TO RUN A FULL SEASON WITHOUT REFILLING.
 CATALOGUE FREE UPON APPLICATION.
 FOR SALE BY.

A. L. GIRARD CYCLE CO.

1401 O STREET.

WHOLESALE AND RETAIL DEALERS IN

Bicycle Supplies

AND

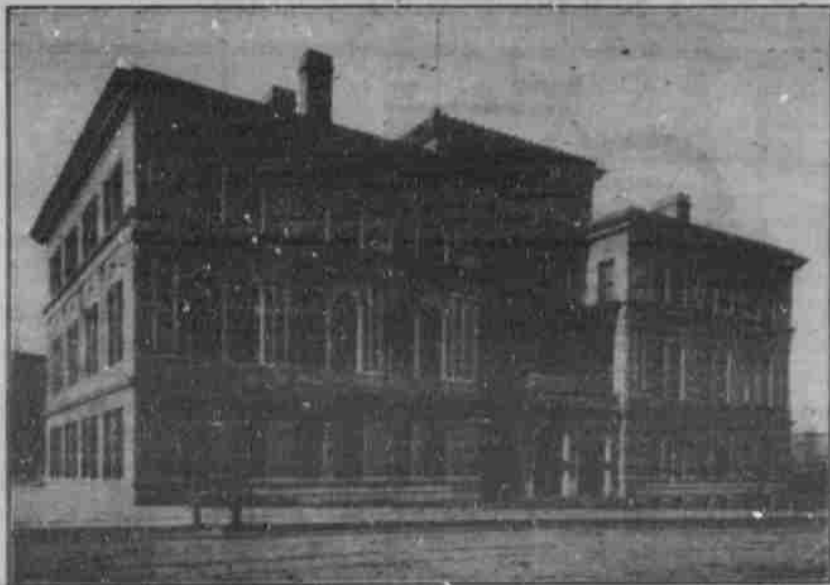
Sundries.

Repairing a Specialty.

The Creighton

Medical College

14th and Davenport Streets, Omaha



Annual Session begins about October 1st, 1900. The required standing of this school demands a four years' graded course. The laboratories are the most thorough and complete of any in the West. The Dispensary Clinics furnish abundant material for all branches of Medicine and Surgery. Especial attention is called to the Surgical and Medical Clinics which are held in the large pavillion of St. Joseph's Hospital. These Clinics are for the exclusive use of the students of the Creighton Medical School, and for visiting Practitioners, and exhibit more cases than all the other Omaha Hospitals combined. Clinics are also held in the County and Presbyterian Hospitals. The College Building is one of the finest structures for medical teaching in the United States, and is thoroughly equipped for teaching Medicine according to modern ideas.

For Catalogue and further information address

DR. J. P. LORD,
 Dean and Secretary,
 Paxton Block, OMAHA