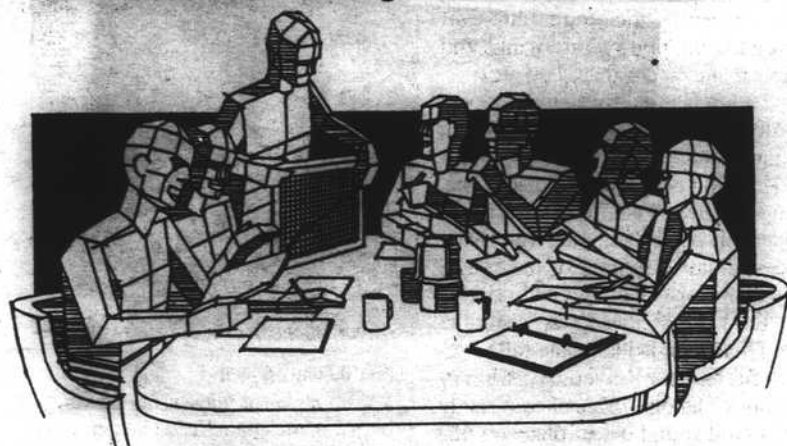


A paid political message of the A-Team Party to people that don't normally vote in ASUN elections.



Has the ASUN been taken over by a cyborg army of mutant robots from outer space?

Maybe.

Maybe you should start voting.

Vote A-Team on March 1

ASUN Student Government Elections, March 1 2000. Christina Reisselman, A-Team Treasurer.

## Collaboration with gallery part of exhibit

SHELDON from page 9

few masterpieces, but something that can create a full-worked story about the history of modernism," Siedell said.

"It's also important for our audience to learn something about another institution and learn that there are other institutions out there that are similar to ours that have similar advantages and disadvantages and opportunities."

Faxon agreed when the two museums worked together, they encountered uncanny results.

"It's amazing to look at the two collections and see how similar the vision was for both of the institutions," she said. "There was a common sense of what was great in American art, and for that reason this was a perfect collaboration."

Despite the show's not opening until this weekend, Siedell said it was already a great success — one he hoped to duplicate in the future.

"We're already talking about opportunities to collaborate again," he said. "This has been a great opportunity to set a (precedent) for working with other institutions."

## Sheldon rents space to house collection

By Sarah Baker

Senior editor

Because of the ever-growing size of the Sheldon Memorial Art Gallery's permanent collection, the museum has leased a space off campus to store its vast collection of American art.

Dan Siedell, curator and interim director of the gallery, said this space, unlike spaces the gallery has used to store art in the past, is more secure and climate-controlled.

"This space is one that we really need to store art," Siedell said. "We need a place to have trucks take art, unload it and pick up art. This is very important for us to have as we do renovations to the gallery."

Siedell said he was not sure how much art will be stored in the space, but none is in there yet.

"When the gallery was built in 1963, the permanent collection consisted of 4,000 works," he said. "Now it has 12,000. We just need to figure out exactly what to do with this space now that we have it."

Linda Cowdin, an administrative technology vice chancellor for business and finance, who worked on leasing the building, said the lease is through the Las Brisas Land

"This space is one that we really need to store art."

Dan Siedell  
curator of the Sheldon

Development Company.

Located at 2600 Kimco Drive, the building has 6,836 square feet of warehouse space for the museum.

She said it has been rented under a yearlong lease with options to renew, and annually, the space costs \$37,666 to rent, or about \$3,000 per month.

"(The lease) could go on for several years, depending on the need," Cowdin said.

The space is equipped with 24-hour security, and the temperature and humidity also can be controlled to make sure the works aren't damaged while in storage.

Siedell said the money to pay for the lease is not coming directly from the Sheldon's budget, but instead from the university's administrative budget.

"This demonstrates the administration and the chancellor are very serious about the Sheldon," he said.

Your latest CLINIQUE bonus is here. This week!

## BEST BLOOM



Come claim six of the most useful, most wanted Clinique makeup and skin care essentials. All in a handy, take-everywhere cosmetics bag. Yours at no extra charge with any Clinique purchase of \$16.50 or more. One Bonus to a customer, please, per event. While supplies last. Better hurry.

- Dramatically Different Moisturizing Lotion
- Turnaround Cream
- Lash Duo: Full Potential Mascara In Black And Naturally Glossy Mascara In Jet Black
- Different Lipstick In Think Bronze
- Glossware SPF 8 In Air Kiss
- Clinique Happy Body Smoother

CLINIQUE  
Allergy Tested  
100% Fragrance Free  
(With the exception of  
Clinique Happy products.)  
www.clinique.com

BEN  
SIMON'S  
People Will Notice



Nebraska Rewards™  
MERCHANT

Gateway Mall Location Only • 434-7400  
(800)523-0188

## UNPLANNED PREGNANCIES...



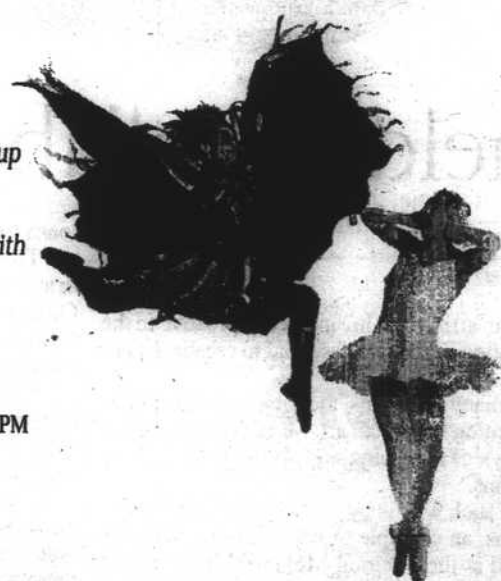
...can change your life in an instant. Perhaps you would like to consider the possibility of creating an adoption plan for your child. Our case workers can answer your questions confidentially. If you would like to visit with us, please call today.

4600 Valley Road, Ste. 314 • Lincoln, NE 68510  
(402) 483-7879 • 800-390-6754

## Les Ballets Trockadero de Monte Carlo™

All-male dance group  
lovingly parodies  
traditional ballet with  
comedic results.

Tuesday,  
February 29, 8PM



Lied Center for Performing Arts  
Lincoln, NE

Tickets: 472-4747 or  
1-800-432-3231

Box Office: 11:00AM-5:30PM M-F

Website: www.unl.edu/lled/



Nebraska  
Lied Center programming is supported by the Friends of Lied and grants from the National Endowment for the Arts, Mid-America Arts Alliance and the Nebraska Arts Council. All events are made possible by the Lied Performance Fund which has been established in memory of Ernest F. Lied and his parents, Ernest M. and Ida K. Lied.  
University of Nebraska-Lincoln  
The University of Nebraska-Lincoln is an affirmative action, equal opportunity institution.