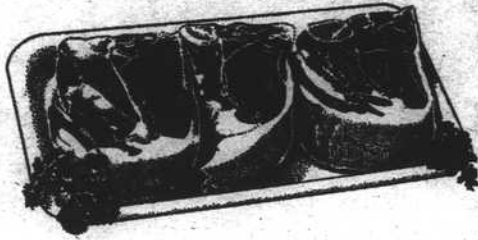


www.dailyneb.com

• Personal Training • Aerobics • Nautilus • Treadmills • Sauna • Free Weights •

Does this remind you of your current workout facility?



Avoid the meat market!

Call or stop by Cottonwood Club for a tour and a Free trial visit

- Minutes from campus
- \$29.95 one month Tanning
- 3 month membership only \$89.95
- All fitness classes included: Kickboxing, Toning, Spinning, Yoga and more!
- Open 24 hours, 7 days a week



COTTONWOOD CLUB

475-3386
330 West "P" Street

• Lifecycles • Stairmasters • Whirlpool • Spinning • Elliptical Trainers • Nautilus •

• Open 24 Hours Everyday • Tanning • Racquetball Courts •

• Open 24 Hours Everyday • Tanning • Racquetball Courts •

OU's Sampson: Refs got it tough

REFS from page 7

though 44 fouls were called between the two teams.

"Yes, it's more physical and yes, it's bad," Watkins said. "We always hear, 'We're going to clean up this and clean up that.' But it seems to be the same as in the past."

Both Watkins and Oklahoma State Coach Eddie Sutton cited one of the NCAA's officiating points of emphasis for this season: rough play away from the ball.

Sutton said nationwide, the violations were problematic because the referees weren't noticing it, as they have stressed protecting the shooters more than those players playing off the ball.

Though Sutton said he was happy to see shooters getting more attention, he said he'd also like to see a more divided attention when it came to fouls away from the ball.

"That sometimes really restricts a score," Sutton said. "If somebody's allowed to hand-check, that can play with a player's mind, and we've certainly seen a lot of that this year."

One player it's not affecting is Texas center Chris Mihm.

"Yeah, it's going to be rough down there; that's to be expected,"

"We've overloaded the officials on what they need to do."

KELVIN SAMPSON
Oklahoma coach

Mihm said. "I have no problem with that. That's how the game should be played."

In agreement, Sampson said, he'd heard enough of official-bashing and turned his sights on his colleagues, saying the game has become too complicated in recent years, regardless of the physicality.

Sampson said the rugged play underneath and the 3-point game had translated into a faster, more exciting game for the fans, but rule constraints and additions have only meant headaches for officials and coaches.

"I've always thought basketball was a fairly simple game," he said. "But every year, we seem to make it a little more difficult to officiate."

"You get much more than a degree."

"With all the changes in health care, we can't just focus on nursing anymore. At Methodist, we focus on the whole patient and the whole caregiver - it's all about life and how you live it."

-David Over, RN, Methodist College graduate.

At Methodist College, we are committed to shaping students into professional, conscientious caregivers by providing Education with Heart, Education for Life.

We Offer Degrees in:

- Nursing
- Diagnostic Medical Sonography
- Cardiac/Vascular Sonography
- Respiratory Care
- Health Promotion
- Medical Assistant
- EMT/Paramedic
- Dietetic Technician

We're Committed to Academic Excellence

- Above-average licensure pass rates for recent graduating classes
- Doctorate- and Masters-prepared faculty and professional staff
- Development of your own portfolio of experience, highlighting your accomplishments

Call us today to begin your health care career!

354-4879 or (800) 335-5510.

www.MethodistCollege.edu



An Affiliate of Methodist Health System
8501 West Dodge Rd.
Omaha, NE 68114

Education with Heart.
Education for Life.

Methodist College admits students of any race, color, and national or ethnic origin.

Smile. You get 5 free online hours with these Navix plans:



Low Usage Plan: 15 hours for \$6.50 a month.

Medium Usage Plan: 40 hours for \$10.00 a month.

High Usage Plan: 250 hours for \$19.50 a month.

And whichever you choose, we'll give you 5 free hours of Internet access every month.

Additional minutes are \$.02.

Call University Telecommunications at 472-5151 (students) or 472-3434 (faculty or staff). Or, stop by 211 Nebraska Hall.



navix.net

Aliant Communications.

Making it easier to communicate.™

* You must be a UNL student, faculty or staff member to qualify for these plans. Netscape software is available in Windows and Macintosh versions.

How Would You Score?

LSAT MCAT
GMAT GRE DAT

Take a Free Test Drive and find out!

Saturday, February 13, 1999
8:30 a.m. SHARP

Call today to reserve your seat!

April 10 is the last paper & pencil GRE. Be prepared with Kaplan!

KAPLAN

1-800-KAP-TEST
www.kaplan.com

*Test names are registered trademarks of their respective owners.