

Married couple leaving UNL for Idaho

By **TIM KARSTENS**
Staff Reporter

The promise of fishing, hiking, beautiful scenery and new challenges have lured two University of Nebraska-Lincoln administrators to the American West.

Larry Blake, assistant director of facilities, and Peg Blake, director of admissions, and associate vice chancellor for student affairs, have heeded the advice to head west by accepting similar positions at Boise State University.

Howard Parker, a UNL architect and Larry Blake's supervisor, said the university is losing two quality people in Peg and Larry Blake.

"I am very sorry to see them go," Parker said. "They are both assets to the university."

With growing enrollment and vigorous campus expansion, the university is losing two key officials.

But the Blakes, who have been at UNL a combined 18 years, say greater challenges and opportunities lie westward.

"It is a really good opportunity for me," said Larry Blake of his new role as director of facilities planning at Boise State. "For me it will allow me to

reshape a campus."

Boise State is preparing for a significant expansion — including the addition of a satellite campus — to keep up with growth. As director of facilities, he would be able to leave his mark by orchestrating all of the expansion's design and planning. According to Blake, the expansion would provide him with a valuable experience and Boise State with a much needed face lift.

"It is a campus that is growing," Larry Blake said. "But right now it doesn't look well-planned. We are looking for a more cohesive plan."

Looking around the UNL campus, it is easy to see the impact Larry Blake and the facilities management team at UNL have had. The university has expanded with the addition of the skyboxes at Memorial Stadium and the Nebraska Union project. Having been so involved, Larry Blake said he regretted not being able to witness the completion of these projects.

Peg Blake said she is also looking forward to new challenges and opportunities as the vice chancellor of student affairs at Boise State. But having been at UNL for 12 years, adjusting to a new job and home can be difficult.

"This place owns my heart," Peg

Blake said of UNL. "It has been an integral part of my life. I have strong friendships here."

Like the state of Idaho itself, Boise State is growing rapidly. Where her husband will concentrate on structural expansion, the bulk of Peg Blake's responsibilities will focus on growing enrollment.

"Boise State is a bit smaller (compared to UNL) with about 15,000 students but it is growing and building a reputation in that part of the country as an up-and-coming institution," Blake said. "It is exciting being involved in the growth of this university."

The prospect of a new challenge would have been reason enough to change jobs, the Blakes said. But they have always looked forward to a chance to live in the mountains where outdoor activities are plentiful. Their 5-year-old son is already looking forward to going fishing with his father.

Peg Blake said they were looking forward to the wilderness activities Idaho had to offer. But making positive changes sometimes required sacrifices and sad moments.

"The opportunities in Boise are fabulous," Peg Blake said. "But that doesn't make the goodbyes any easier."

Smith recommends Robak to fill empty post at NU

By **DARREN IVY**
Summer Co-editor

A month ago, Lieutenant Governor Kim Robak was considering a return to her private practice or possibly entering the private sector work force when her term ended in January.

That was before Nebraska President Dennis Smith offered her the vacant Vice President for External Affairs and Corporations Secretary job.

Robak announced Wednesday during a teleconference from a lieutenant governor's meeting that she would accept the job.

"This is one I can't turn down," Robak said. "It allows me to continue with public service. Hopefully, I can build on Nebraska's strengths. It is a fabulous university."

Robak, who is a University of Nebraska-Lincoln graduate, will complete her term in the capitol and then start at UNL Jan. 7.

"We would love to have her here sooner, but we appreciate her dedication to the people," Smith said. "It is important she finish her term."

Several people will fill in for Robak until she finishes her term.

Robak replaces J.B. Milliken, who took a job at the University of North Carolina. Robak's \$121,500 salary will be the same as Milliken's.

"We are excited," Smith said. "Her history and background are exceptional."

Robak said maintaining and building partnerships with businesses will be one of her tasks as NU moves into the 21st century.

"The university is the foundation for good life here in Nebraska," Robak said. "We need to continue to promote higher education."

The NU Board of Regents still needs to approve Smith's recommendation for Robak at their June 20 meeting.

A thing of beauty is a joy forever.
-- John Keats



We have financing plans to fit any budget (some interest free). Come in and ask about our convenient terms. We also educate students by explaining the different grades of diamonds and how this grading is done....

Quality... She Deserves... Prices You Can Afford

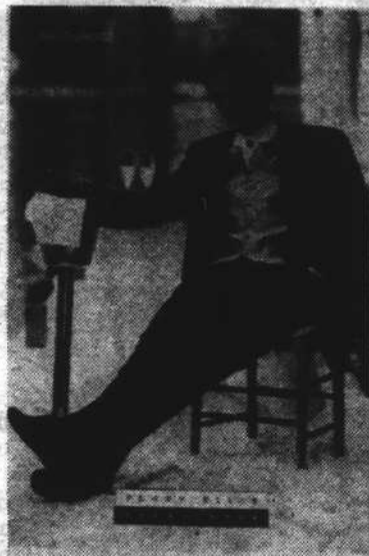
Sartor Hamann Jewelers
1150 "O" St. Gateway Mall

Holway Formalwear Gives You . . .

the sublime elegance and fluid American style of PERRY ELLIS.

Available at Nebraska's LARGEST supplier of PERRY ELLIS . . .

Holway, the unmistakable look and cut of PERRY ELLIS evokes the charm and style of the classic gentleman. As Nebraska's formalwear specialists, Holway also gives you a wide selection (more than 70 styles and 3,000 tuxes in stock), the finest quality garments, and the prompt, personal service you deserve.



HOLWAY
FORMALWEAR

Nebraska's Largest Formalwear Specialist

For a free color brochure call 1-800-829-3387

1228 P Street
Lincoln, NE 68508
(402) 476-2262

Gateway Shopping Mall
Lincoln, NE 68505
(402) 464-6661