

Cops stop meth deals

METH from page 1

St. and searched that apartment. There, they found 48-year-old Roger Owings sitting on a .45 caliber handgun and carrying a .22 magnum pistol.

In the search, officers found baggies of methamphetamine, scales, syringes, hundreds of plastic bags and a large amount of cash, the affidavit said.

Owings, who lived in the apartment, was arrested for possession of a controlled substance and possession with intent to deliver.

Also in the apartment were Michael Ybarra, 36, and Daniel DeRock, 37.

During the search, police learned that Ybarra had warrants for his arrest in Lancaster and Saunders counties. They arrested him on the warrants, but later found that he had two plastic bags of methamphetamine on him. One plastic bag was found in the police cruiser; the other was found in jail.

DeRock was found to have a small plastic bag of marijuana in his pocket and was cited for possession of

marijuana, less than an ounce.

After searching the Orchard Street apartment, police then went to a storage garage at 2905 N. 38th St. with a search warrant. There, they found most of the methamphetamine confiscated, and more than \$12,000 in cash.

Police then went to Beltan-Gastelum's house at 120 Gaslight Circle with a search warrant. There they found a 17-year-old boy with a small plastic bag of cocaine in his wallet. He was arrested for possession of a controlled substance.

None of the men was charged Tuesday in Lancaster County Court. Charges are expected today. However, the 17-year-old boy's case was handed over to the juvenile court Tuesday.

Both Ybarra and DeRock have extensive criminal histories. Ybarra has been arrested or cited 76 times by the Lincoln Police Department — with five cases pending — for crimes ranging from assault to drug possession.

DeRock has been arrested or cited 26 times — with four cases pending — for crimes ranging from resisting arrest to driving while intoxicated.

Both Bullock and Lincoln Police Chief Tom Casady said Tuesday that the department does not focus on seizures, but more on conspiracies and networks of dealings.

But with the rapid increase of methamphetamine on the streets, more seizures have come, they said.

"In my 24 years of law enforcement, this is the most prominent drug problem that has emerged," Casady said. "We have made a lot of meth cases."

And with more methamphetamine comes more crime, Bullock and Casady said. Bullock said the drug makes people violent, and also willing to steal to get high. Casady said he believes the drug has led to an increase in armed robberies.

The increase in methamphetamine cases has even taxed the narcotics division, Casady said. He said in the next year, two more narcotics officers will be added to the 13-member force.

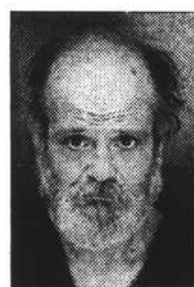
"We are increasingly forced to pick and choose cases ... simply because we don't have enough personnel in the drug unit to actively pursue every case," Casady said.

The Accused



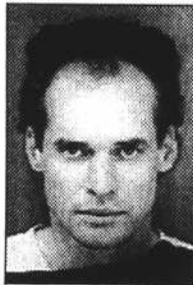
Beltan-Gastelum

Arrested for possession of a controlled substance and possession with intent to deliver.



Owings

Arrested for possession of a controlled substance and possession with intent to deliver.



DeRock

Cited for possession of marijuana, less than an ounce.



Ybarra

Arrested on warrants in Lancaster and Saunders counties. Police also found two plastic bags of methamphetamine on him, one in the police cruiser, the other in jail.

Massages available

MASSAGE from page 1

sage can sign up at campus rec or call the center to schedule a personal massage with one of the massage therapists, Decker said.

The massage therapy clinic is open to students, faculty, staff and the public from 10 a.m. to 8 p.m. Monday through Thursday and 10 a.m. to 6 p.m. on Friday.

"We keep those slots pretty full," Decker said.

The costs for the 25-, 45- and 60-minute massages are \$15, \$25 and \$30 for campus rec members and \$25, \$35 and \$40 for non-members.

The massage therapists also will perform seated massage demonstrations before the Baylor volleyball team on Friday.

The cost of the massage will be \$5 for five minutes and \$7 for 10 minutes.

Amy Lohrberg Patt, massage therapy coordinator for campus rec and the Athletic Department, will perform a massage clinic from 5:30 p.m. to 7 p.m. on Monday at campus rec and at the same time Tuesday at the East Campus Recreation Center.

Other events scheduled for the week are being planned by the Injury Prevention and Care staff.

This year will be the third year for Injury Prevention and Care Week.

IPC has training rooms in the Campus and East Campus Recreation Centers. They administer first-aid treatment, tape injured areas, refer students to the health centers or doctors and perform other services.

Because the UNL massage therapy program is part of IPC and the Athletic Department, the IPC decided to have its Injury Prevention and Care Week coincide with National Massage Therapy Awareness Week this year, said Chris Oehling, assistant director for injury prevention and care.

"We thought it would be a great way to promote National Massage Therapy Awareness Week and help create awareness about our massage therapy program," Oehling said.

The IPC had four programs scheduled for the week. On Monday and Tuesday two healthy-back instruction classes were offered — one at campus rec and one at the east union.

Today and Thursday, a flexibility for active lifestyles class will be held from 12 p.m. to 1 p.m. at campus rec and east union.

Those interested in the flexibility for active lifestyles need to sign up at campus rec or the East Campus Recreation Center.

PATT from page 1

in the mornings and with students, faculty, staff and the public in the afternoon.

She said changing her focus halfway through the day gives her energy to stay on top of things all day.

Patt said she likes massage therapy because it's a rewarding field for her.

"I like to know I make a difference in athletes' performance," Patt said.

One athlete she has helped this fall is Michael Corniffe, a freshman business administration major and track and field runner. Corniffe's hamstring tightens up when he runs, so he gets massage therapy two days a week.

"It helps loosen up my muscles so I am able to lift or train that day," Corniffe said.

Even though Patt works with athletes, she said her most rewarding event was guiding a student with scoliosis to a health-care professional.

Patt said she did all the treatment she could do on the girl, but finally referred her to a doctor who diagnosed the girl with scoliosis.

"Hopefully, I made a difference in this girl's lifelong comfort level," Patt said.

Patt started full time at UNL in August. Before taking a full-time job she served as an on-call massage therapist for UNL in August 1996.

Patt said she chose massage therapy at Nebraska Wesleyan University after taking a massage therapy class for a physical education requirement. She said massage therapy provided several things she wanted in a future job.

"I wanted to work with athletes and be involved in business," Patt said.

In 1991, she opened Relaxation Station in Lincoln. She operated that business until the demand at UNL was too great.

So far, Patt has received a good grade from at least one of her patients.

"She is one of the better ones that I've had work on my leg this year," Corniffe said.

**Most Work Zone
Accidents Occur in
Daylight**
Drive Smart, Drive Safe!

The Japan Exchange and Teaching Program 1998

Teach English in junior and senior high schools in Japan
Learn about Japanese culture and people
Gain international experience

Requirements

- Have an excellent command of the English language
- Obtain a bachelor's degree by June 30, 1998
- Be a U.S. citizen
- Be willing to relocate to Japan for one year

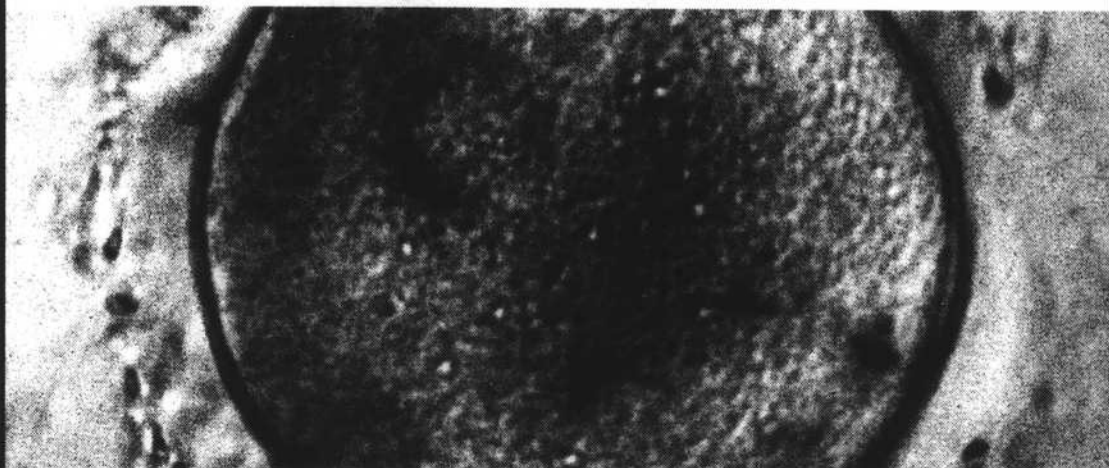


Contact the Consulate General of Japan at 1800 Commerce Tower, 911 Main Street
Kansas City, MO 64105-2076.
Call (816) 471-0111, (816) 471-0113 or 1-800-INFO-JET

THE PRISONER.



HIS CELL.



G A T T A C A

AT THEATRES OCTOBER 24