

# Classified

SEPTEMBER 30, 1997

PAGE 11

### 200s For sale



### 205 Bicycles For Sale

'97 GT Mountain Bike. Dark Green, speed shifters, like new, \$350. Paid \$425, 465-0195.

### Cycle Works

Don't miss out on the best riding of the year. Enjoy the trails with a new bike from Cycle Works. All 97's on sale. Trek, Specialized, Klein, Bontrager. Located between City and East campus. 27th & Vine. 475-BIKE. www.cycleworksusa.com

### 216 Computers For Sale

Apple Power Book. 5300cs, 24 megabyte RAM, PC slots, external modem included. Fast, portable, perfect. \$1200. 488-1558.

### 240 Misc. For Sale

Air hockey table with paddles and pucks. \$100 OBO 475-5305.

### 265 Stereos/TVs For Sale

18 inch color TV. \$25 MUST SELL! Call Chad 436-0981.

### 270 Ticket Exchange

FOR SALE: TEXAS TECH VS. NU. \$80.00/each. Call 806-788-1887. Ask for Brian.

**NU at COLORADO**  
Call 303-430-1111

WANTED: 2 KSU vs. NU TICKETS. PLEASE CALL 464-3598.

### 290 Vehicles For Sale

1988 Honda Civic LX 4 door sedan. A/T, A/C, PL, PW, new exhaust, new windshield, cruise, dealer maintained. \$4000 OBO, Tom 488-0257.

1989 Honda Prelude, 5 speed, sunroof, new tires. \$5,000 OBO. Lon (402)498-9534 (Omaha)

1991 Honda Civic DX 4 door. Auto-transmission. New tires. Great interior. \$3850 OBO. Edward 438-7128.

1996 39-1/2 foot travel trailer, 2 br, 15-foot electric slide out, central air, washer/dryer, stereo, \$18,000. 476-4776.

### 300s Services



### 300 Adoption

#### ADOPTION

A loving alternative. We offer counseling and adoption services to help you plan the best future for your baby. No fees or obligations. Statewide since 1893. Nebraska Children's Home, 4600 Valley Rd., Suite 314, 483-7879

ALL YOUR DREAMS FOR YOUR CHILD CAN COME TRUE. Lifetime of love, laughter, hugs and kisses. Expenses paid. Please call Karen/tra 1-800-488-3194.

### 350 Health and Fitness

Swedish Massage. 477-0138.

### 355 Instruction/Tutoring

**KUNG FU 435-1137**

### 365 Legal Services

#### Auto Accidents & DWI

Other criminal matters, call Sanford Pollack 476-7474.

### 378 Pregnancy

#### Free Pregnancy Test

Birthright is a confidential helping hand. Please call for appointment or more information, 483-2609. Check out our website www.birthright.org

### 395 Typing & Resumes

#### Academic Expressions

Term Papers, Masters' Theses, Doctoral Dissertations, Resumes, Cover Letters, Business letters and newsletters. 30 Years editing experience. (402) 628-2221 voice, (402) 628-2222 Fax, ironclad@navix.net

### 400s Housing



### 400 Roommates

Female non-smoking roommate needed ASAP. 3 bedroom/2 bath. 2 miles from campus w/d \$225+1/3 utilities. 474-1157

Female, nonsmoking, roommate needed. 2 bedroom, 2 bath. Call 465-4829, leave message.

M/F roommate to share large house near campus. W/D, AC, dishwasher. \$165/mo + utilities. 476-0395.

Male, nonsmoker, 2 bedroom apartment. 18th & Washington. \$210+1/2 deposit+1/2 utilities. 435-0528.

### 420 Rooms For Rent

Prefer non-smoking female. Utilities, laundry, and cable FREE! Near south area, on bus route, available 10/5, month-to-month-lease, 432-5573 or 435-0030.

### 430 Houses For Rent

#### Rent Reduced

5 Bedrooms. Near UNL Stadium. Central air. Washer/Dryer. Range/Refrigerator. Dishwasher. Lawn maintained. \$600, 489-9294.

**\$625**

6918 Cleveland. 2 BR. Off street parking. Full basement. No pets. 483-7330, 432-2822.

1201 New Hampshire, 3 bedroom, finished basement. No pets/smoking \$625, plus utilities. 423-6251.

1425 North 23rd, very nice 5 bedroom, 2 bath, parking, near campus. \$795. 441-9596.

1735 N. 29th. Large 5-6 bedrooms, 2 baths, central air. \$795. 430-6326.

2980 Dudley, brand new 4 bedroom, 2 bath, double garage, central air, \$850. 430-6328.

BRAND NEW! 2628 Q. Deluxe, 2 bedroom, double garage, \$595. 430-6328.

### Close to Campus

3+ Bedroom, 2 Bath, Brand New Duplex at 3040 Q Street. Washer/Dryer Furnished, Reduced to \$675. Management One 477-2600.

### Close to Campus

4 Bedroom, 2 Bath, Brand New Duplex at 1747 North 26th Street. Washer/Dryer Furnished, phone and cable in each room. Reduced to \$895. Management One 477-2600.

### 440 Duplexes For Rent

1813 Euclid, nice two bedroom, off-street parking, no pets. \$375+deposit. 423-6428 or 483-5803.

2338 "E" Street. 1 bedroom, newer 2-plex. Assigned parking. Laundry. Ideal for graduate student. NS/NP. \$325. 432-3686.

2501 "E" Street. 2 bedroom. 1000 square feet. New drapes, paint, ceiling fans, built in microwave. Ideal for graduate students. \$475 for 2. NS/NP. 432-3686.

Near new between campuses. 1815 North 24th. 3 bedroom, 2 bath, washer/dryer. 2 stall garage. \$795. 438-3393 or 580-7339.

Nice! 1 and 2 bedroom, w/d, near campus, 23rd and Vine. Tenant pays gas/electric, \$300-495. Off street parking 432-6476

Spacious 2 bedroom, fireplace, oak woodwork, \$425 + gas, electric. 2504 W St. 483-6124 or 988-2101.

### 450 Apartments For Rent

#### \$100 Gateway Gift Certificate

1 and 2 Bedroom units from \$339 up. With one year lease, get gift certificate for Gateway. Ask about our other special! Walk to campus from our 640 South 20th location...475-7262.

## Check us out



www.unl.edu/DailyNeb/

## WORK WITH CHILDREN

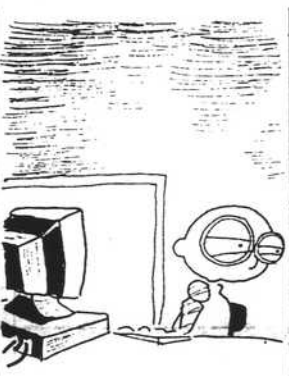
- Do you think it's fun to work with children?
- Do you quickly build friendly, supportive relationships with children?
- Do you like to plan activities?

If so, the Gallup Child Development Center has positions available working with children of all ages. If you're looking for a part-time, afternoon job:

Call our Interviewing Center Today  
486-6700  
Monday - Friday 8a.m. - 6p.m.  
Gallup Child Development Center  
EOE

### THE DEEP END

BY CHAD STRAWDERMAN



### THE NORM

BY MICHAEL JANTZE



## Ever Wonder How You're Going To Pay For All Those Christmas Presents?

At Carol Wright Gifts, Inc. we can help! We have immediate openings on second shift for Production Workers, QC/Receiving Employees, Machine Operators and Forklift Operators. These seasonal positions start at \$7.40 per hour! Full-time or Part-time is available. If you want to earn some extra cash, come see us at:



**Carol Wright Gifts, Inc.**  
340 Applecreek Rd.  
P.O. Box 83409  
Lincoln, NE 68501-3409

EOE M/F/D/V

Respond by 10/10/97

## It's Not Telemarketing. It's communicating about progressive issues!

- Work on environmental, campaign finance reform, and women's issues.
- Work as few as 12 hrs/week. Earn full-time benefits at 20 hours per week. Make \$8/hr. guaranteed.
- Close to downtown campus. 941 'O' Street #625

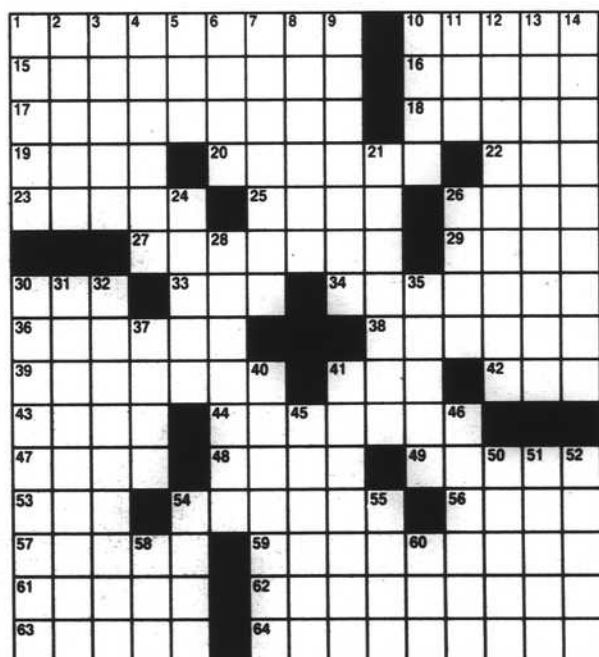


For an interview, call 476-1010  
Mon. - Fri. 9:00 A.M. - 4:00 P.M.

- ACROSS**
- Top-notch Atlanta fan
  - Off the mark
  - W. L. Garrison's goal
  - Horse blanket
  - Jets fan
  - Of eight
  - "Cars," 1980 film
  - Rub — with (hobnob)
  - Greek letter
  - Singer Frampton
  - Soviet writer Ehrenburg
  - "O, my Luve is like —": Burns
  - Prosper
  - Alopecic
  - Hot tub
  - One of Rhee's soldiers
  - Finery
  - Spruce Goose's berth
  - Silky smooth
  - Heavenly
  - 55 m.p.h., e.g.
  - Loser to H.C.H.
  - Head
  - Putative
  - Ate's mother
  - W.W. II naval base
  - Bohco-Fisher creation
  - Sealing-wax substance
  - Propped (up)
  - A "Rashomon" star
  - Bride in "Our Town"
  - Identify miscreants
  - Gluey substances
  - Add details
  - "— of a Woman," Pacino film
  - Bottom-line Atlanta fan
- DOWN**
- Highway bottleneck
  - Humiliate
  - Triple trio
  - Omits
  - Well-trained
  - Neb. Indian
  - Number 9 iron for Bobby Jones
  - Not impossible
  - Nudnik
  - Major Hoople
  - Big burger
  - Among other things: Lat.
  - Carolinas' divider
  - The green teens
  - Attacks strongly
  - Bucolic
  - Blind as —
  - Great city of old Greece
  - Like a blob
  - Type of camera
  - Convert Giovanni into John, e.g.
  - A Nasser name
  - Takes form
  - Headgear for a prince
  - Energetically
  - Of a wall: It.
  - "Extase" star
  - Tragic salesman
  - Virtue; valor
  - Partner of older
  - Part of CBS
  - Obligation
  - Actor Cariou
  - Turn (road sign)

### ANSWER TO PREVIOUS PUZZLE

CAPO CLARA USED  
OLEO AILED ETR  
SITZ RIODE LOSE  
AAREADITALAEER  
OBI MENU  
STARING SITUPS  
WERE ARTY MERRY  
EEROELIAESAUEON  
ANTON MOAT VASO  
RASONS RAVELED  
NUTT GOA  
IOTAISEEIGLUTION  
BRIO TRADE REMO  
INEE ERROR DRAT  
DERR RALLY USNA



- 21 Attacks strongly  
24 Bucolic  
26 Blind as —  
28 Great city of old Greece  
30 Like a blob  
31 Type of camera  
32 Convert Giovanni into John, e.g.  
35 A Nasser name  
37 Takes form  
40 Headgear for a prince  
41 Energetically  
45 Of a wall: It.  
46 "Extase" star  
50 Tragic salesman  
51 Virtue; valor  
52 Partner of older  
54 Part of CBS  
55 Obligation  
58 Actor Cariou  
60 — Turn (road sign)