

You'll gain valuable experience, and a lot of character references.

The Walt Disney World® College Program offers ambitious students a unique opportunity to experience "the magical world of Disney"

from the inside. You'll be part of a top-notch team all working toward the same goal of a spectacular guest experience!

Representatives will be on campus to answer all your questions concerning the Walt Disney World® College Program.

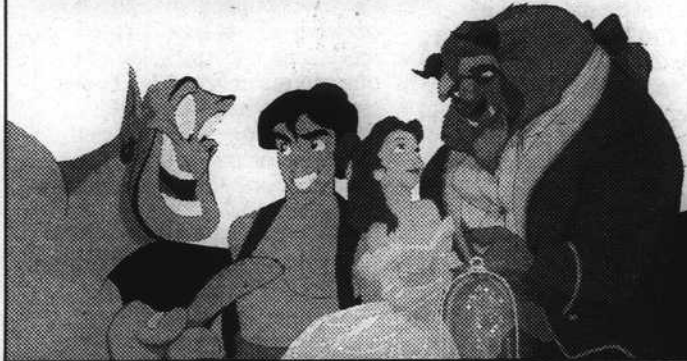
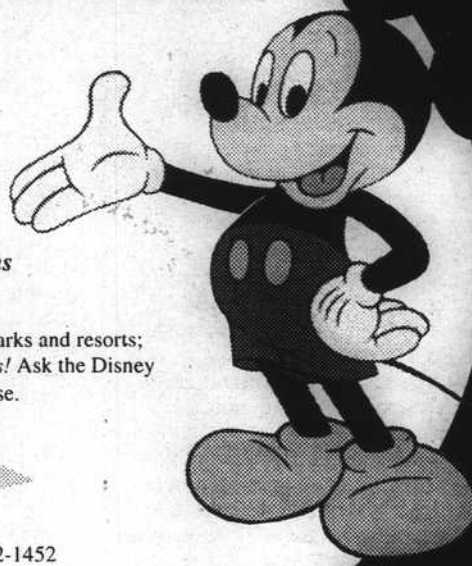
Interviewing: All Majors! Positions available throughout theme parks and resorts; attractions, food & beverage, merchandise, lifeguarding, and many others! Ask the Disney Representative about special opportunities for students fluent in Portuguese.

Presentation Date: February 19, 1996

Time: 4:00 pm

Location: Nebraska Union Ballroom

For More Information Contact: Marsha Phelps, (402) 472-1452



Walt Disney World®

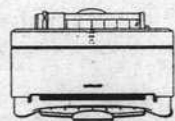
An Equal Opportunity Employer • Drawing Creativity from Diversity

The PowerBook + Printer Payback

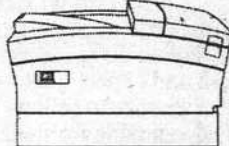
- Macintosh PowerBook 520 4/240 \$1,449
- Macintosh PowerBook 540c 12/320 \$3,599
- Macintosh PowerBook Duo 2300c/100 8/750 \$3,049 20/1GB \$3,919



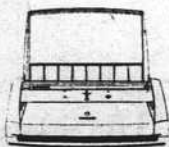
- Macintosh PowerBook 5300/100 8/500 \$1,860
- Macintosh PowerBook 5300/100cs 8/500 \$2,351 16/750 \$2,961
- Macintosh PowerBook 5300/100c 8/500 \$3,132 16/750 \$3,827
- Macintosh PowerBook 5300/117ce \$5,568



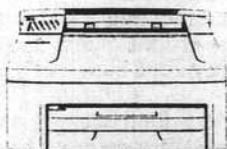
StyleWriter 1200 \$238
Color StyleWriter 2400 \$360



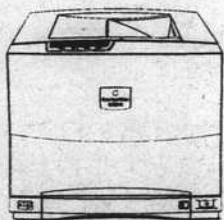
LaserWriter Select 360 \$1,084



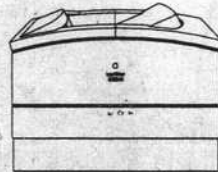
Color StyleWriter 2200 \$370



Personal LaserWriter 300 \$520
LaserWriter 4/600 PS (2 MB) \$824



Color LaserWriter 12/600 PS \$5,755



LaserWriter 16/600 PS (8 MB) \$2,096

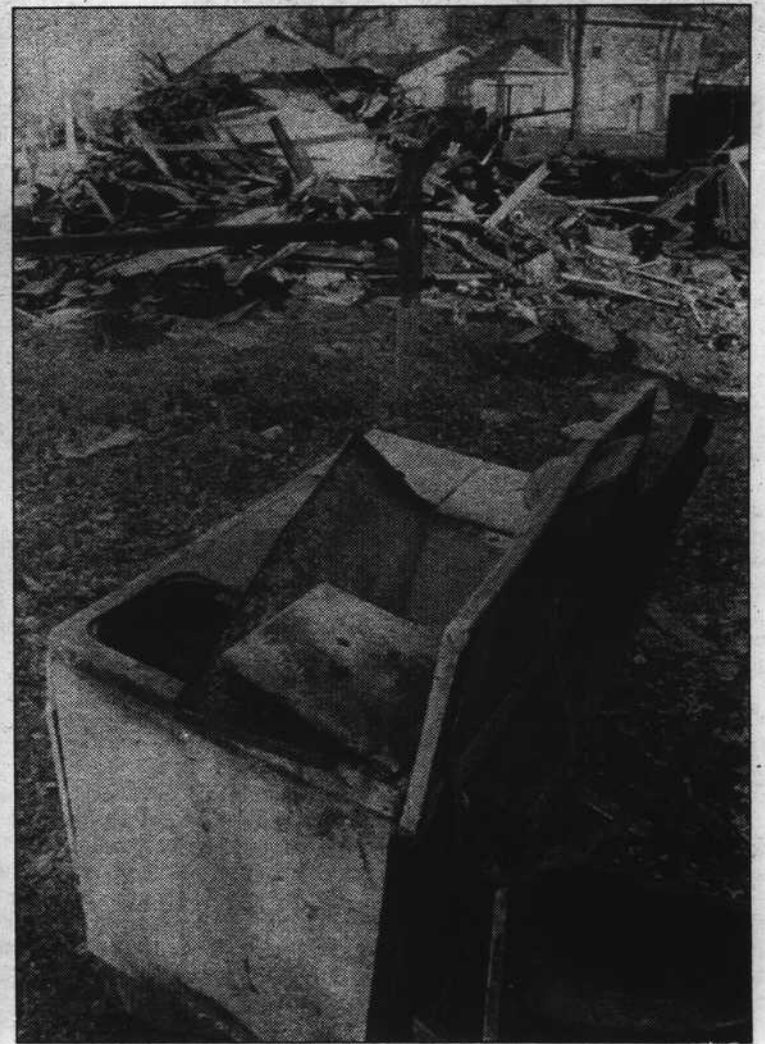
*Only the products listed in this ad qualify for this rebate. PowerBook + Printer Payback ends March 17, 1996. Mail-in rebate offer valid for qualifying purchases made from January 6, 1996 through March 17, 1996, while supplies last. Rebate materials must be postmarked no later than April 7, 1996. Cables for Apple LaserWriter 16/600 PS & Color LaserWriter 12/600 PS must be purchased separately. Students, faculty and staff status must meet CRC Computer Shop educational purchase qualifications. University ID required to order or purchase.

Monday-Friday 8am - 5pm
Tuesday until 6pm

The CRC Computer Shop

501 Bldg. - 501 N. 10th St.
University of Nebraska
472-5787

<http://compshop.unl.edu/pub/compshop.htm>



Scott Bruhn/DN

Fire investigators think a gas leak in a kitchen range may have caused an explosion that severely burned a Lincoln resident and demolished a house at 3121 N. 47th St.

Explosion

Continued from Page 1

Jerry Nichols, a next-door neighbor, said that when he heard the explosion, his whole house shook.

"It felt like something hit the house," he said.

Nichols said the blast split open the southeast corner of Walsh's

house. Walsh was on fire when he ran through the hole onto the front lawn, Nichols said.

"Our immediate concern was Jim," he said.

That's when Nichols noticed the front of the house.

"I thought to myself, 'If that wall is going to fall, we need to get him away,'" Nichols said. "A minute later that wall came down."

Caucus

Continued from Page 1

expected to take part in the caucuses, voting in 2,150 precincts at 4,286 locations.

Sittig said he saw Senate Majority Leader Bob Dole as the front-runner, but would not rule out surprises from multimillionaire publisher Steve Forbes or commentator Pat Buchanan.

"I expect Dole to be the leader," he said. "But the field has certainly closed. A month ago, he looked like he would win in a cake walk."

He said Forbes remained a question mark.

Forbes, who is financing his own campaign, has spent millions of dollars on a media blitz attacking Dole

and his other rivals — a strategy Sittig said had not been used before in Iowa.

"It remains to be seen if it will be effective or not," Sittig said. "The conventional way is just to have ground troops bring out the supporters and cash them in. He'll have to stir some excitement."

"I didn't expect him to establish himself," Sittig said.

Sittig said the large number of possible caucus attendees that remain undecided also did not surprise him.

"Twenty to 40 percent of them say they are undecided," he said. "It's difficult to pick one and reject all the others, especially when the candidates overwhelmingly stand for the same things."

Sewage

Continued from Page 1

in the real world the question is actually detecting something," he said.

The discharge was approved by the Nebraska Department of Environmental Quality, which has the final say on such matters. Spokesman Brian McManus said plant officials must explain why the sewage cannot be treated somewhere else before it is dumped into the river.

"In this case, an engineering firm looked at it, and the cost of putting in duplicate equipment to treat the water would have been in the millions," McManus said. "Plus, there has never

been a detectable effect on drinking water downstream."

Discharges into the Missouri from Omaha-area water treatment plants is not new. The Papillion plant and the Missouri River Wastewater Treatment Plant have dumped 721.9 million gallons into the river since 1990, according to state environmental records.

It hasn't mattered, officials say, because of the volume of water in the Missouri. As of Friday, 17.4 billion gallons of water flowed past Omaha every 24 hours. That's 322 times the amount of wastewater that will be put in the river each day by the Papillion plant.

Corrections & Clarifications

Due to a production and editing error, a story in Friday's Daily Nebraskan was incomplete ("OFFICE candidate says party will cure corruption," pages 1 and 6).

The affected portion of the article should have read as follows.

Chuck Isom, the OFFICE candidate for first vice president, said it was time promises were fulfilled.

"We've heard a lot of talk about parking garages and residence halls being built or renovated, but we

haven't seen any progress," he said. "It's time those things are acted on."

Justin Firestone, the party's presidential candidate, said OFFICE wanted positive changes made in the way the university was operated, and his party was willing to take the first step.

One of the party's measures was to limit campaign spending to \$2,000, Firestone said.

Firestone acknowledged that it probably would take considerably less money than that to run an effective campaign but said that was an issue the party would resolve if he was elected.